

47'-2"

2'-6"

19'-2"

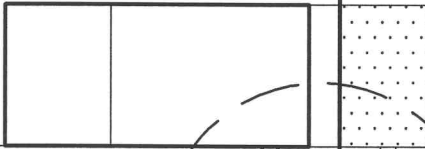
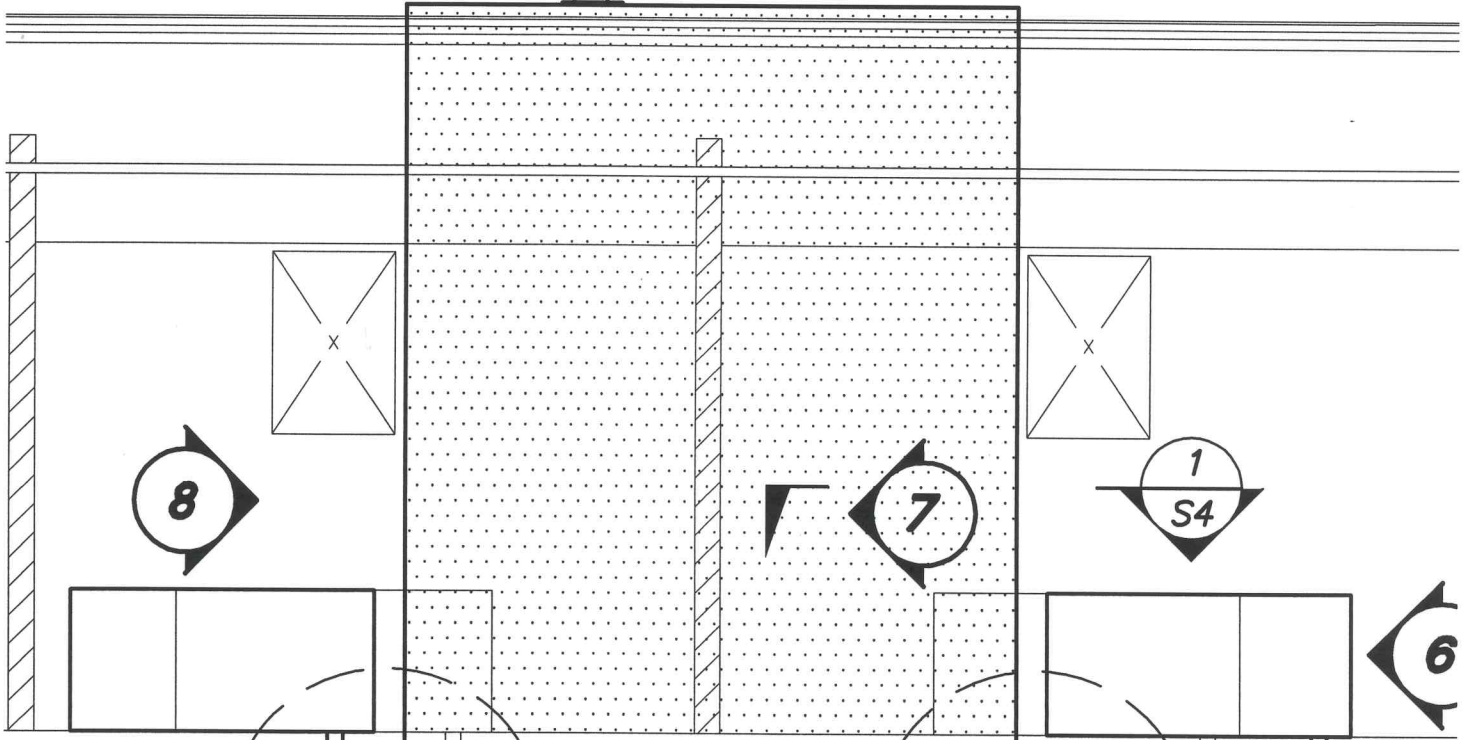
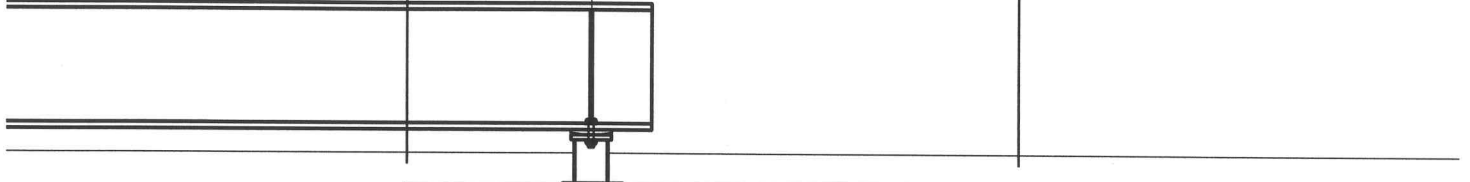
3'-0"

7'-0"

12'-2"

10'-0"

9'-6"



SHOTCRETE WALL NO. 2



△ PROPOSED MODIFICATION TO SHOTCRETE WALL NO. 2 TO AVOID INTERFERENCE WITH EXISTING CONTROL JOINT