

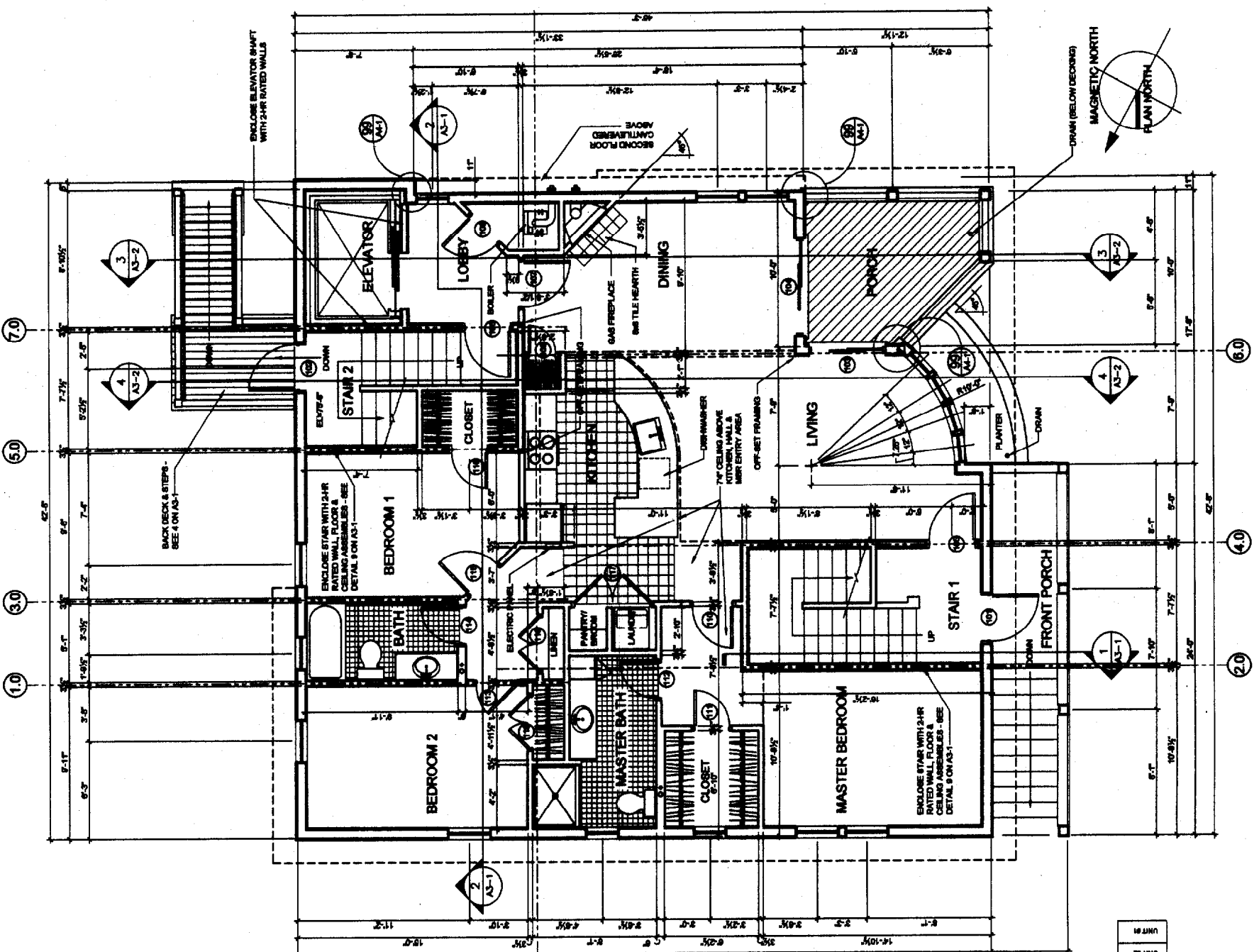
© 2008 TTH ARCHITECTS  
**Casco Bay Condominium Building "C"**  
 CASCO BAY VENTURES  
 Portland, Maine

TTH ARCHITECTS  
 100 CLAND MANSION DRIVE  
 PORTLAND, MAINE 04106  
 TEL: 603.778.8944  
 ARCHITECTURE PLANNING

CONSULTANTS:  
 [List of consultants and their contact information]

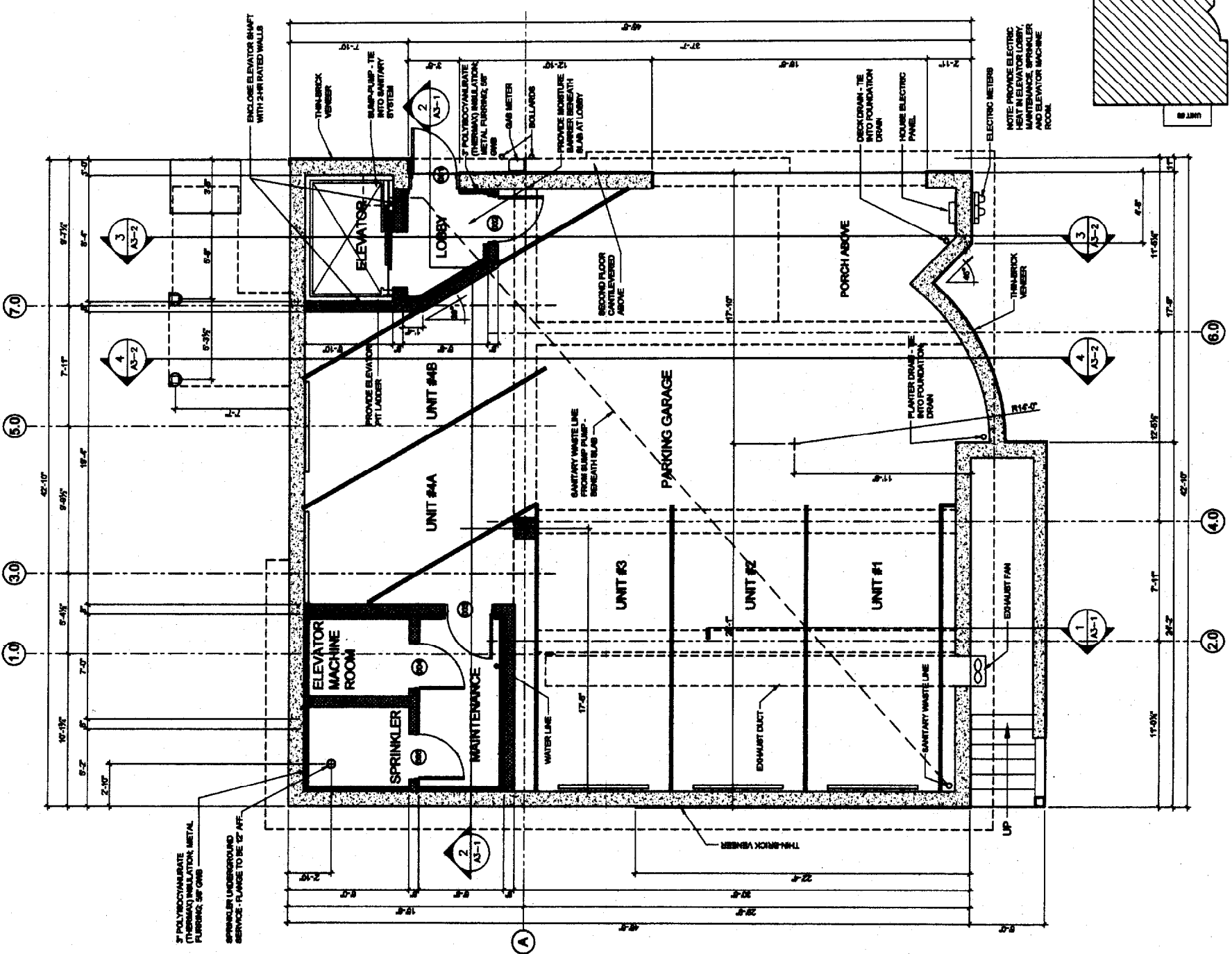
REVISIONS:  
 DATE: May 6, 2008  
 PROJECT NO.: 0111  
 DRAWN BY: NJT  
 CHECKED BY: TST  
 SCALE: As Shown  
 SHEET TITLE: Floor Plans

**A1-1**



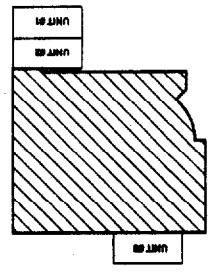
**FIRST FLOOR PLAN**  
 SCALE: 1/4" = 1'-0"

NOTE: PROVIDE HOLES IN STEEL BEAMS FOR SANITARY WASTE LINES. HOLES TO BE SIZED & LOCATED BY STRUCTURAL ENGINEER.



**GARAGE FLOOR PLAN**  
 SCALE: 1/4" = 1'-0"

**OUTDOOR PARKING**  
 NTS





© 2008 TPH ARCHITECTS

Casco Bay Condominium Building "C"  
CASCO BAY VENTURES  
Portland, Maine

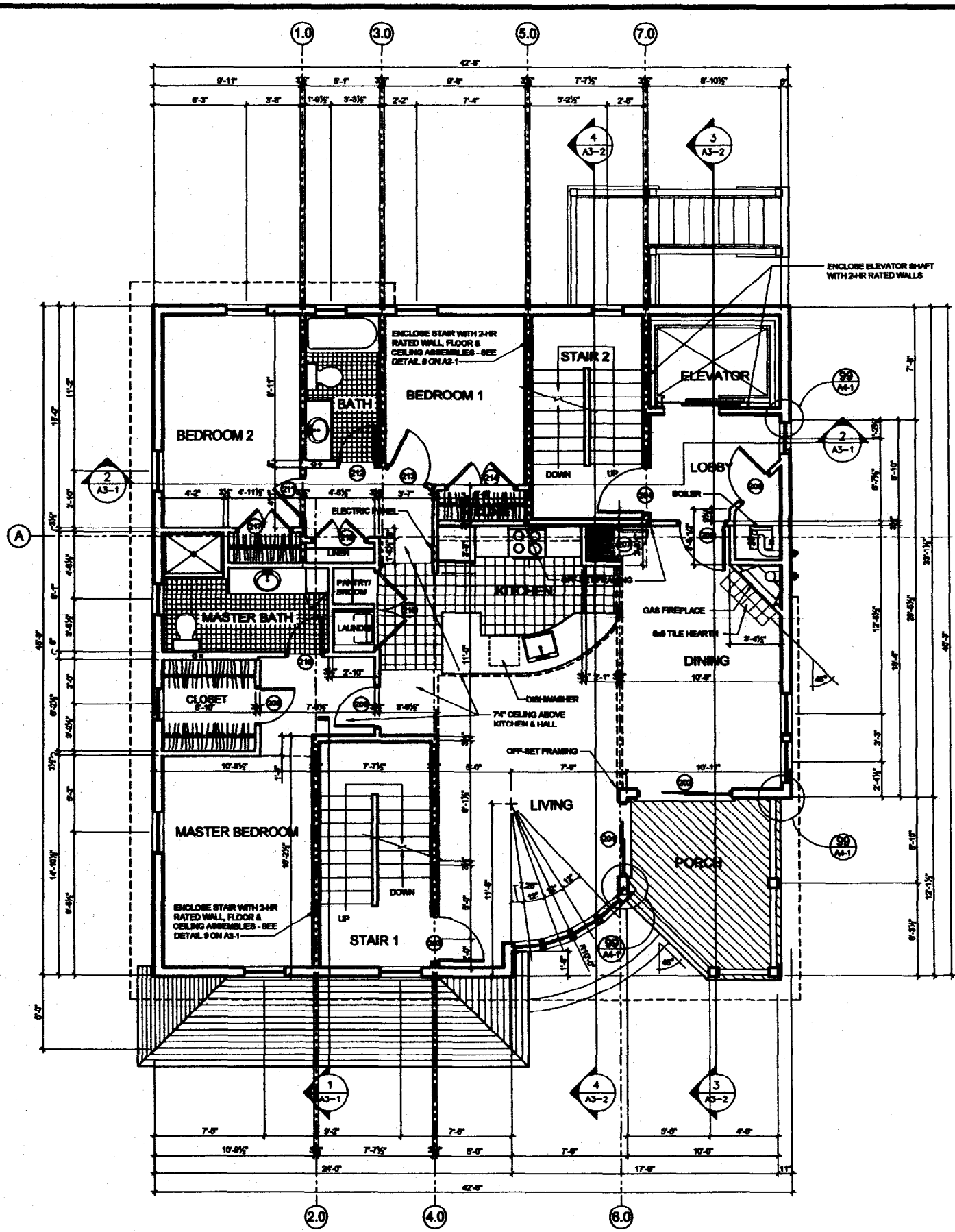
TPH ARCHITECTS  
160 COMMERCIAL STREET  
PORTLAND, MAINE 04101  
TELEPHONE: 857 778 8441  
ARCHITECTURE PLANNING

CONSULTANTS:  
GMA, Inc. - Mechanical Engineer  
GMA, Inc. - Electrical Engineer  
GMA, Inc. - Structural Engineer

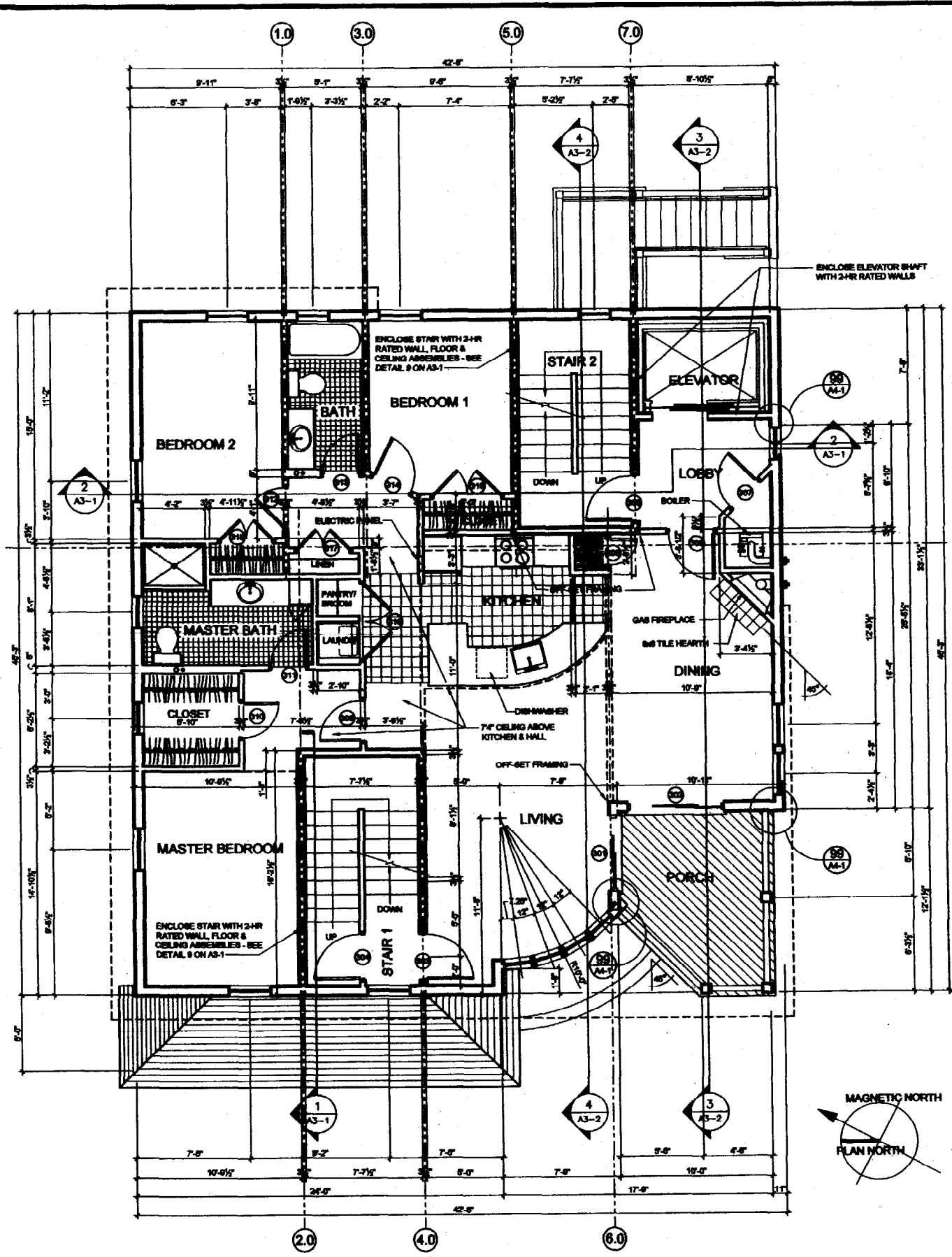
REVISIONS:

DATE: May 8, 2008  
PROJECT NO: 0111  
DRAWN BY: WUT  
CHECKED BY: TBT  
SCALE: As Noted  
SHEET TITLE: Floor Plans

A1-2

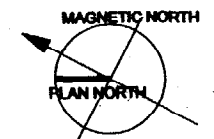


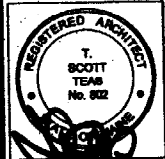
SECOND FLOOR PLAN  
SCALE: 1/4" = 1'-0"



THIRD FLOOR PLAN  
SCALE: 1/4" = 1'-0"

NOTE: PROVIDE HOLES IN STEEL BEAMS FOR SANITARY WASTE LINES.  
HOLES TO BE SIZED & LOCATED BY STRUCTURAL ENGINEER.





© 2008 TTH ARCHITECTS

# Casco Bay Condominium Building "C"

## CASCO BAY VENTURES

Portland, Maine

TTH ARCHITECTS  
88 COMMERCIAL STREET  
PORTLAND, MAINE 04101  
TELEPHONE: 857-776-0101  
ARCHITECTURE PLANNING

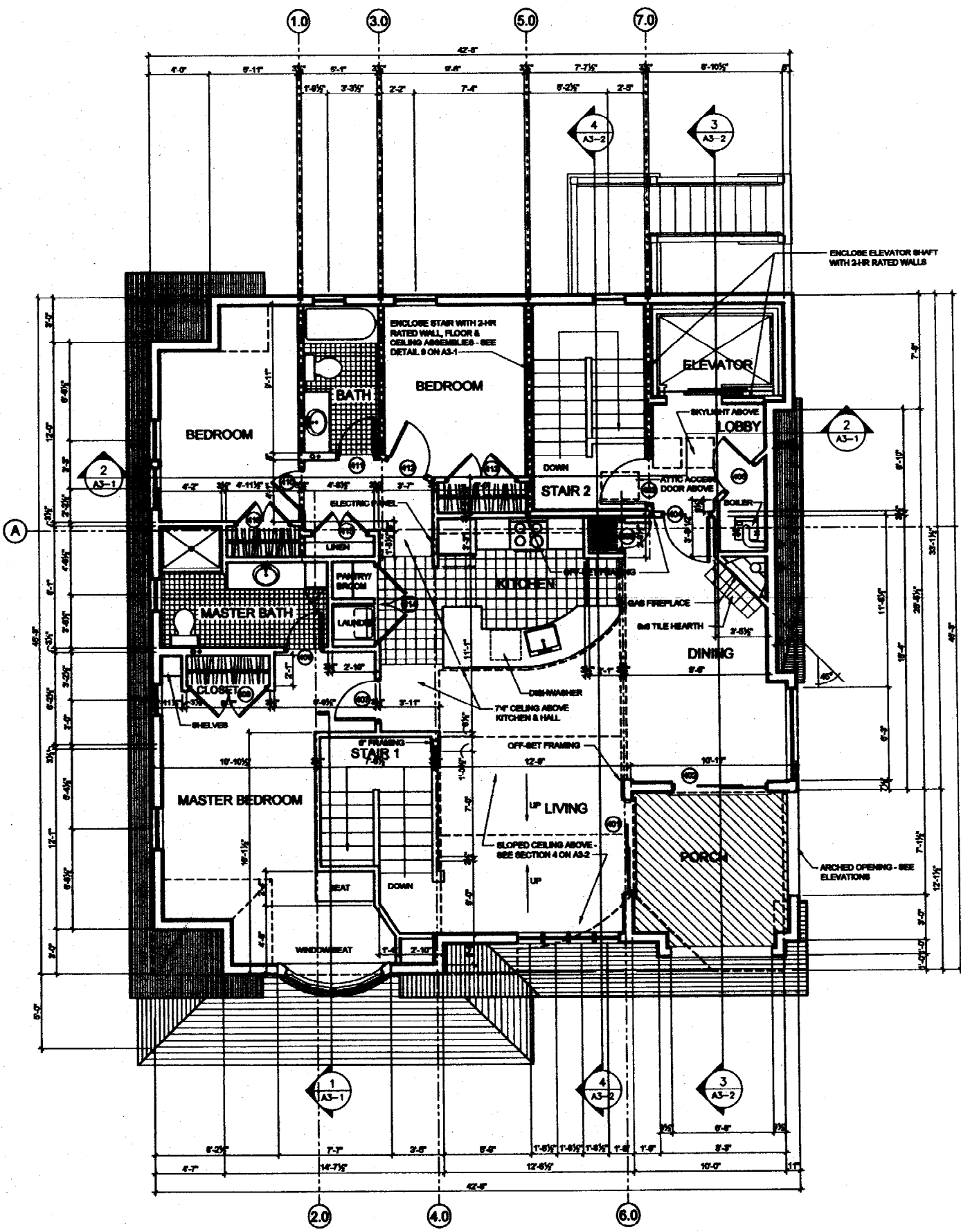
CONSULTANTS:  
TTH ARCHITECTS  
88 COMMERCIAL STREET  
PORTLAND, MAINE 04101

REVISIONS:

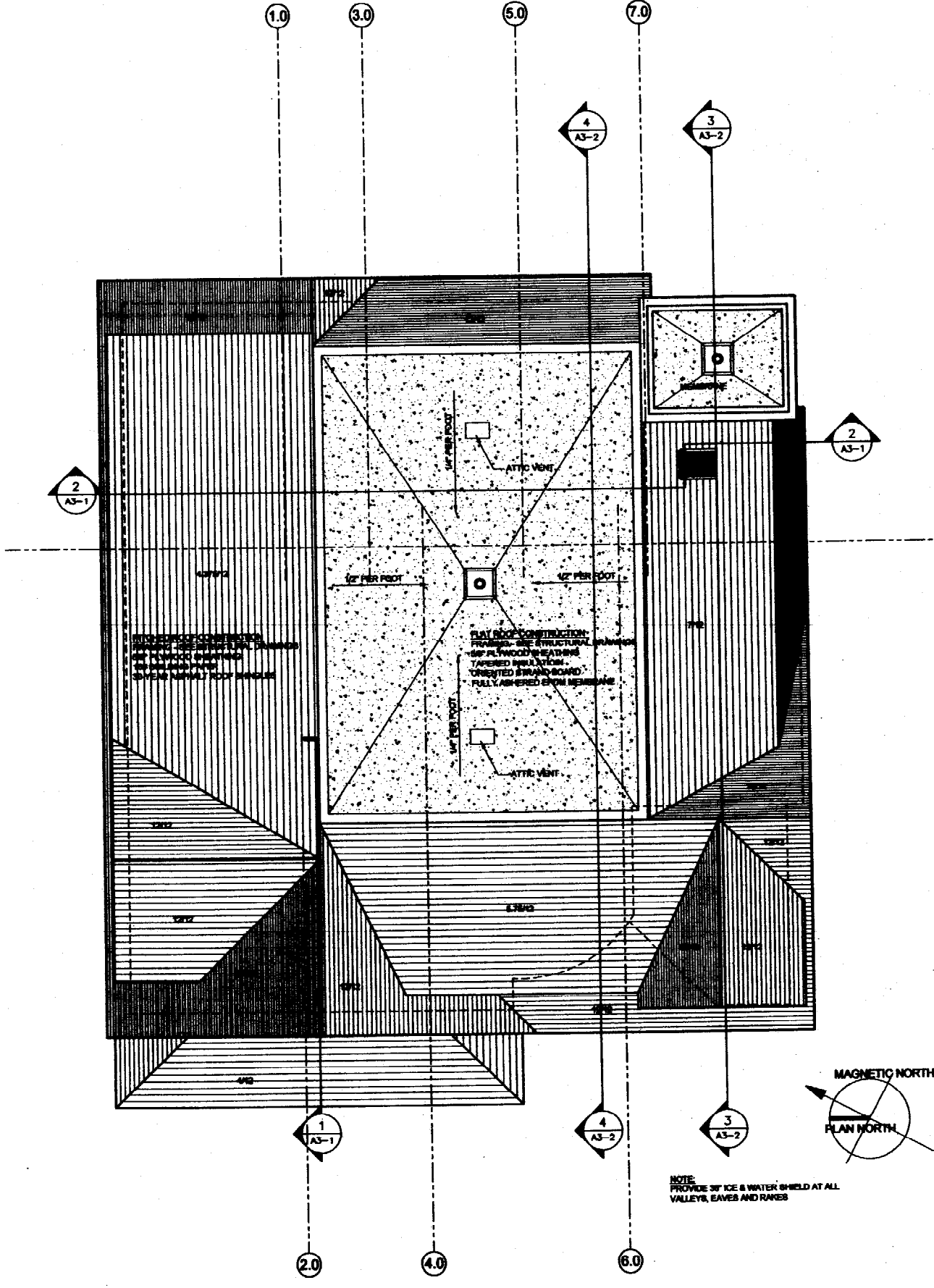
DATE: May 6, 2008  
PROJECT No.: 0111  
DRAWN BY: WJT  
CHECKED BY: TBT  
SCALE: As Noted

SHEET TITLE:  
Floor Plans

# A1-3

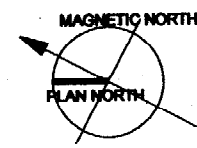


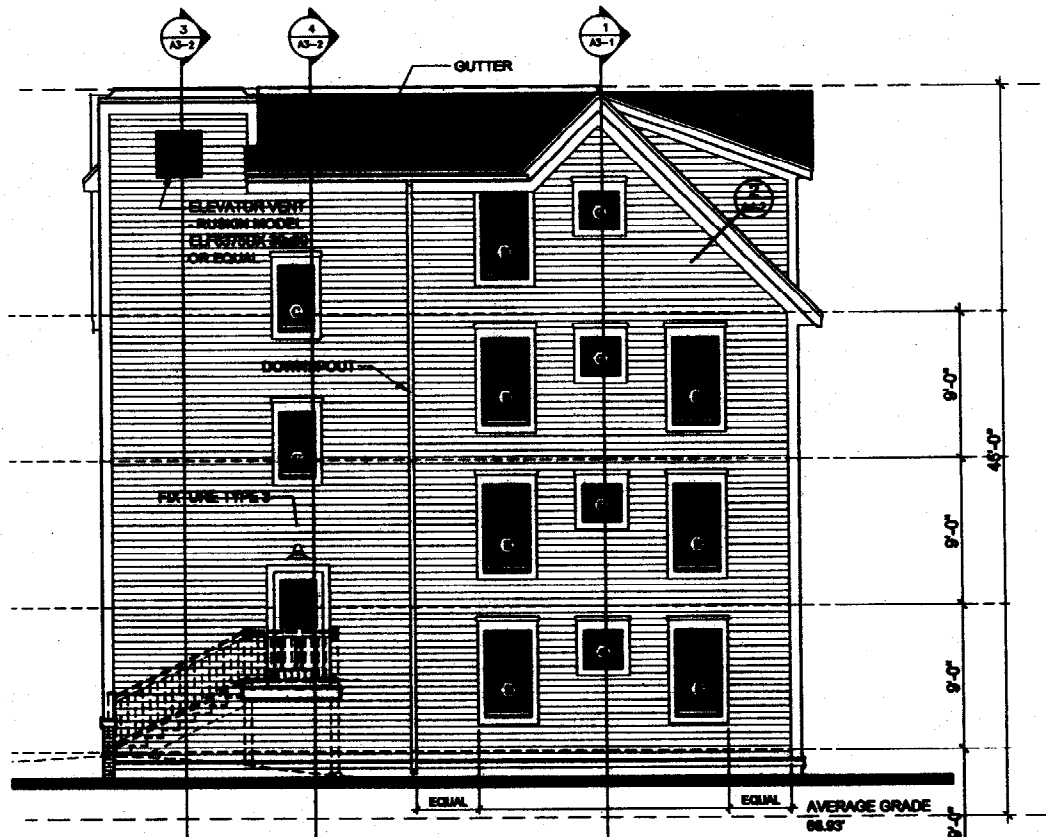
**FOURTH FLOOR PLAN**  
SCALE: 1/4" = 1'-0"



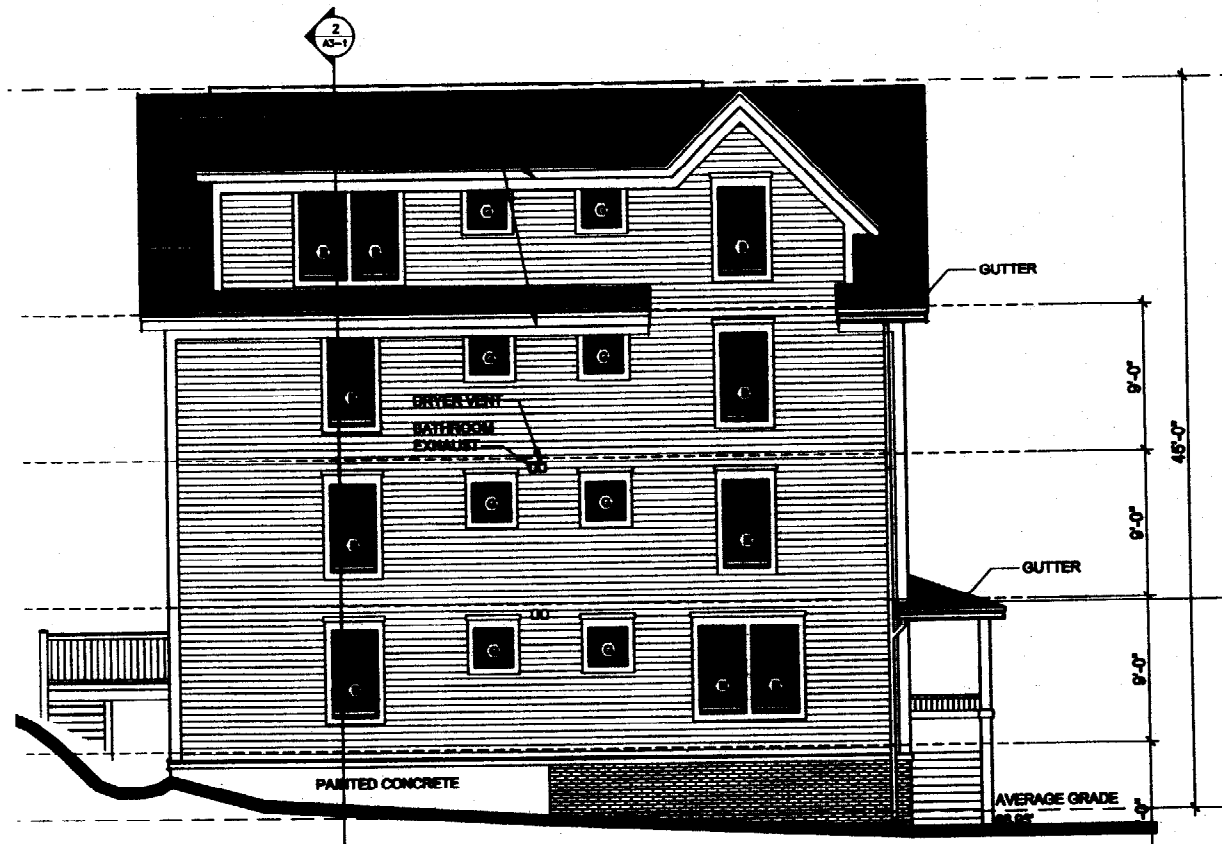
**ROOF PLAN**  
SCALE: 1/4" = 1'-0"

NOTE: PROVIDE HOLES IN STEEL BEAMS FOR SANITARY WASTE LINES. HOLES TO BE SIZED & LOCATED BY STRUCTURAL ENGINEER.

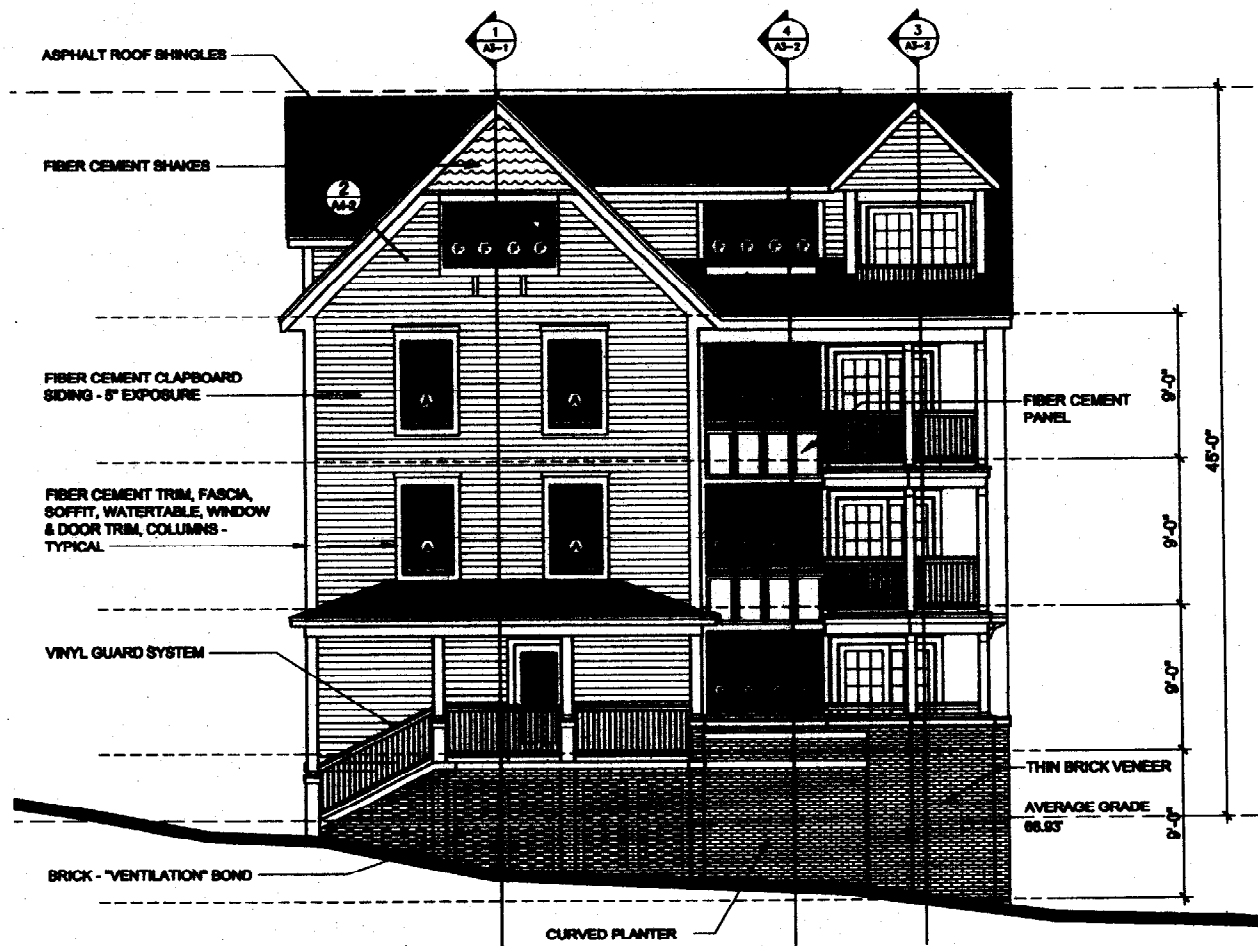




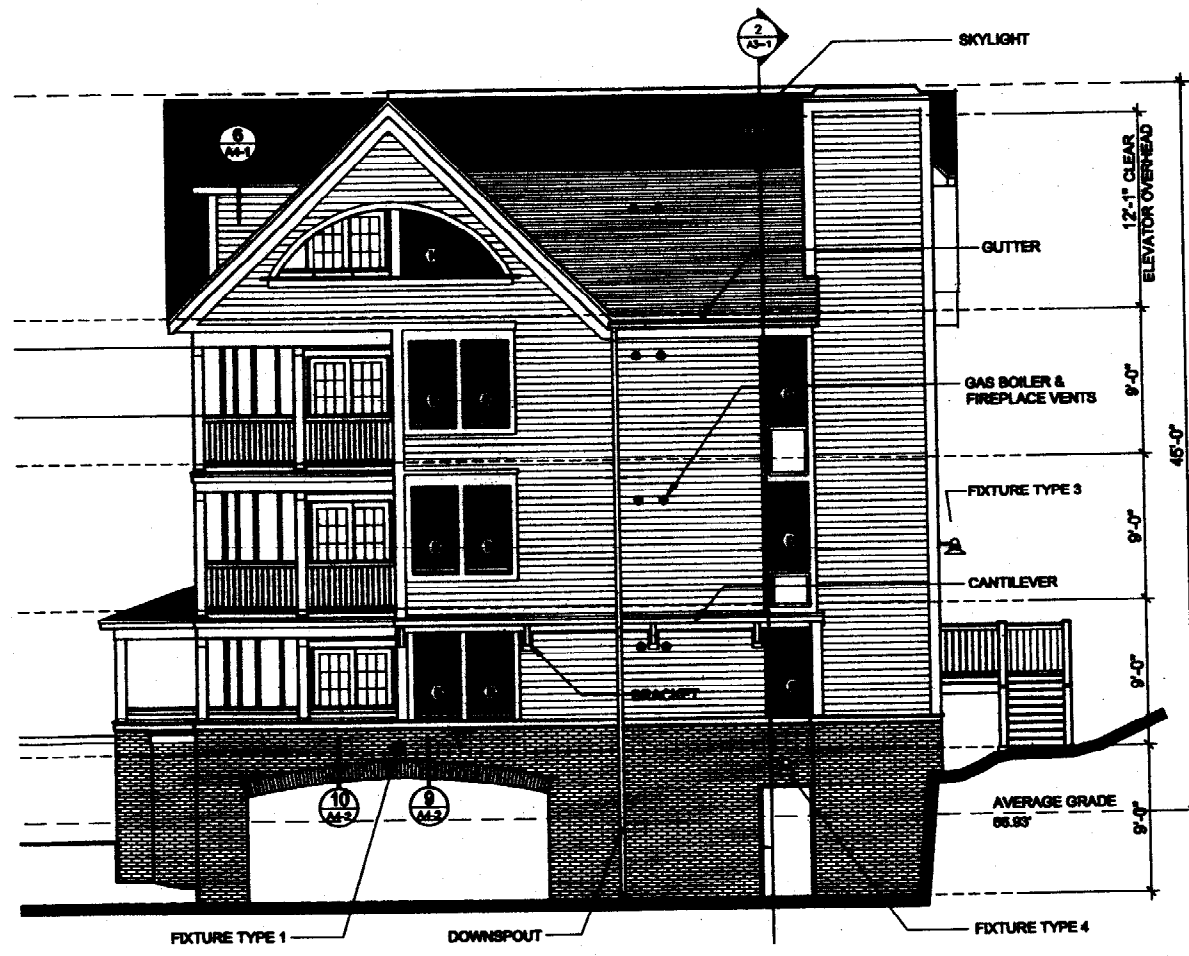
**EAST (BACK) ELEVATION**  
SCALE: 3/16" = 1'-0"



**NORTH (LEFT) ELEVATION**  
SCALE: 3/16" = 1'-0"

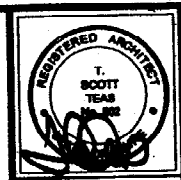


**WEST (WATERVILLE STREET) ELEVATION**  
SCALE: 3/16" = 1'-0"



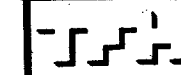
**SOUTH (FORE STREET) ELEVATION**  
SCALE: 3/16" = 1'-0"

NOTE: ELEVATIONS ARE AT 3/16" = 1'-0"



© 2003 TRH ARCHITECTS

**Casco Bay Condominium Building "C"**  
CASCO BAY VENTURES  
Portland, Maine



TRH ARCHITECTS  
100 COMMERCIAL STREET  
PORTLAND, MAINE 04101  
TELEPHONE 207 775 5141  
ARCHITECTURE PLANNING

CONSULTANTS:  
T. Scott Teas, Registered Architect  
No. 10000, State of Maine  
1998-2003

REVISIONS:

DATE: May 8, 2000

PROJECT No. 0111

DRAWN BY: WJT

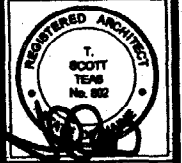
CHECKED BY: TBT

SCALE: As Noted

SHEET TITLE:

Elevations

A2-1



© 2008 TPA ARCHITECTS

# Casco Bay Condominium Building "C"

CASCO BAY VENTURES  
Portland, Maine

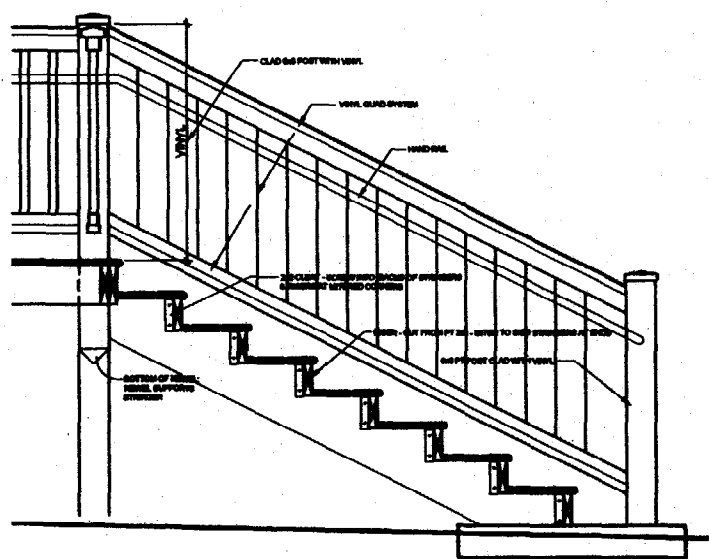
TPA ARCHITECTS  
188 COMMERCIAL STREET  
PORTLAND, MAINE 04101  
TELEPHONE: 857 776 9141  
ARCHITECTURE PLANNING

CONSULTANTS:  
[List of consultants]

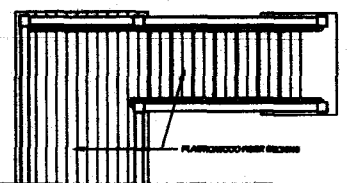
REVISIONS:

DATE: May 8, 2008  
PROJECT No.: 0111  
DRAWN BY: WJT  
CHECKED BY: TST  
SCALE: As Shown  
SHEET TITLE:  
Building Sections

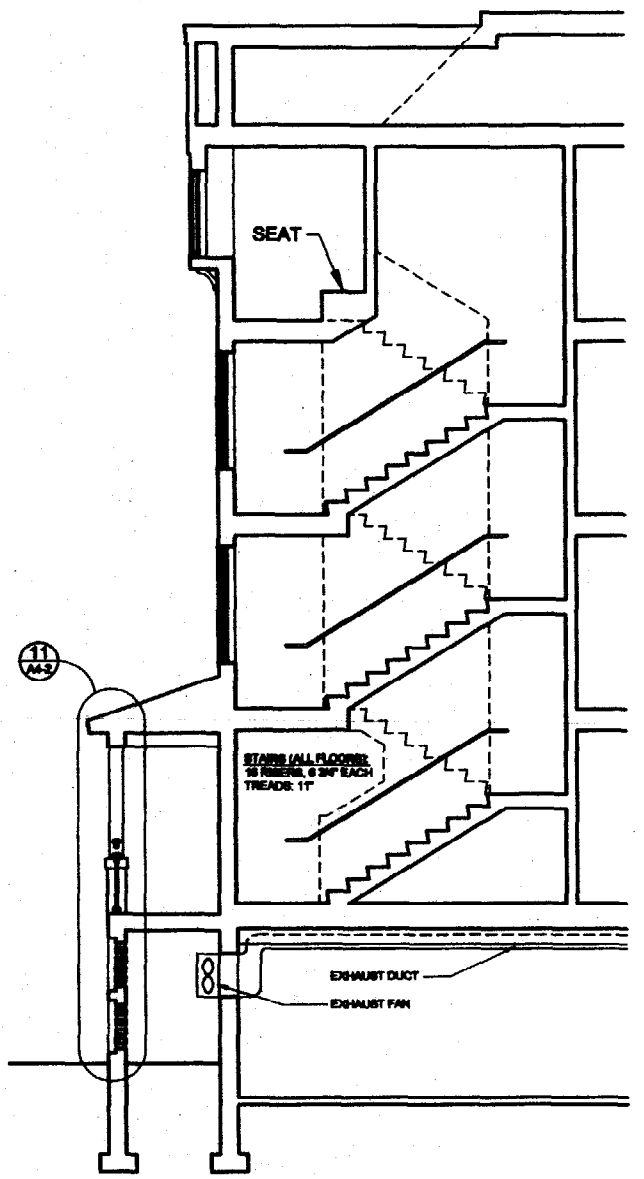
## A3-1



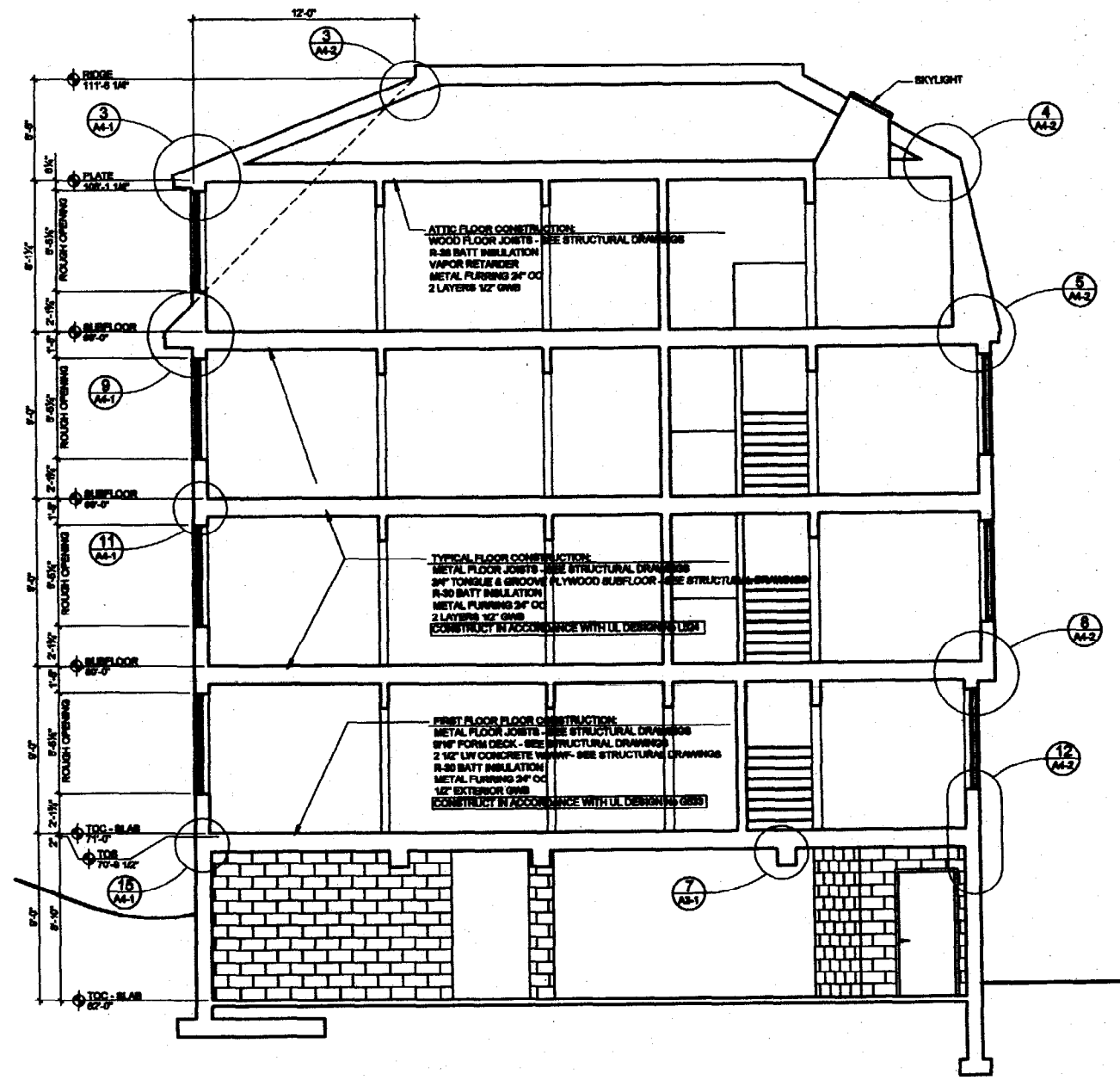
3 SECTION AT BACK DECK & STEPS  
AS-1 SCALE: 3/4" = 1'-0"



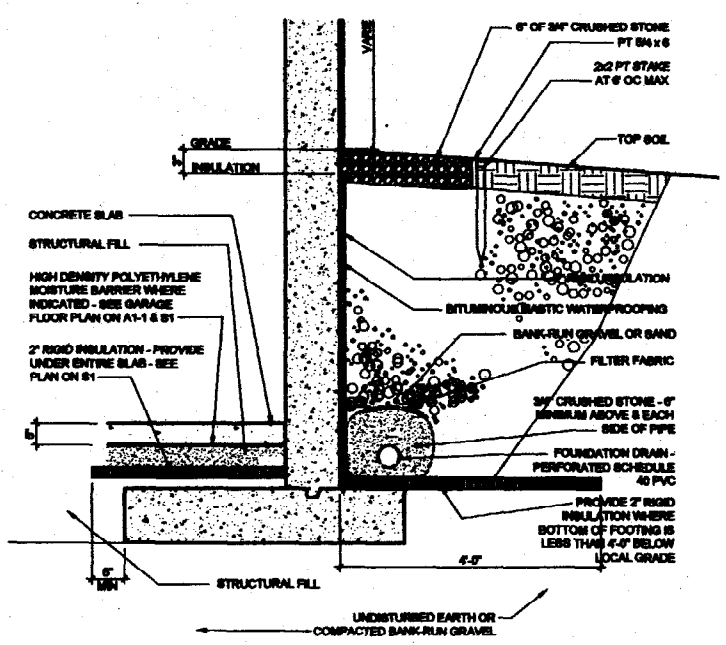
4 PLAN AT BACK DECK & STEPS  
AS-1 SCALE: 1/4" = 1'-0"



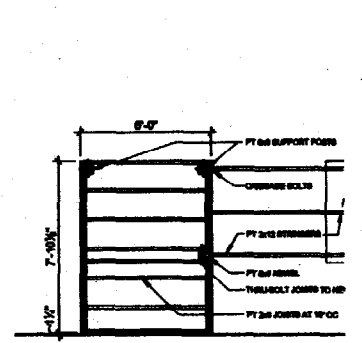
1 FRONT PORCH PARTIAL BUILDING SECTION  
AS-1 SCALE: 1/4" = 1'-0"



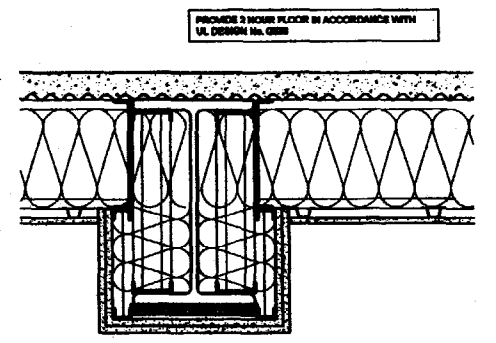
2 NORTH DORMER - SOUTH GAMBREL BUILDING SECTION  
AS-1 SCALE: 1/4" = 1'-0"



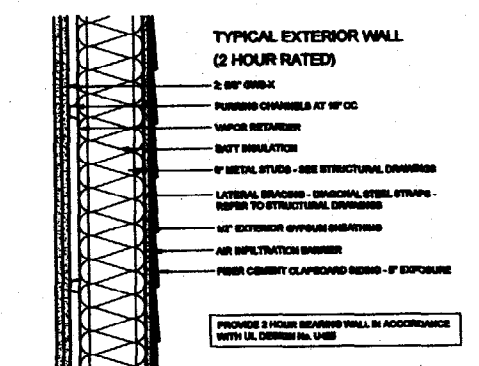
5 FOUNDATION DETAIL  
AS-1 SCALE: 3/4" = 1'-0"



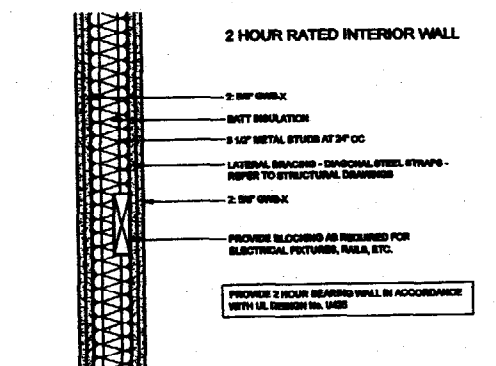
6 FRAMING AT BACK DECK  
AS-1 SCALE: 1/4" = 1'-0"



7 FIRST FLOOR CONSTRUCTION  
AS-1 SCALE: 1 1/2" = 1'-0"



8 TYPICAL EXTERIOR WALL  
AS-1 SCALE: 1 1/2" = 1'-0"



9 2 HOUR INTERIOR WALL  
AS-1 SCALE: 1 1/2" = 1'-0"