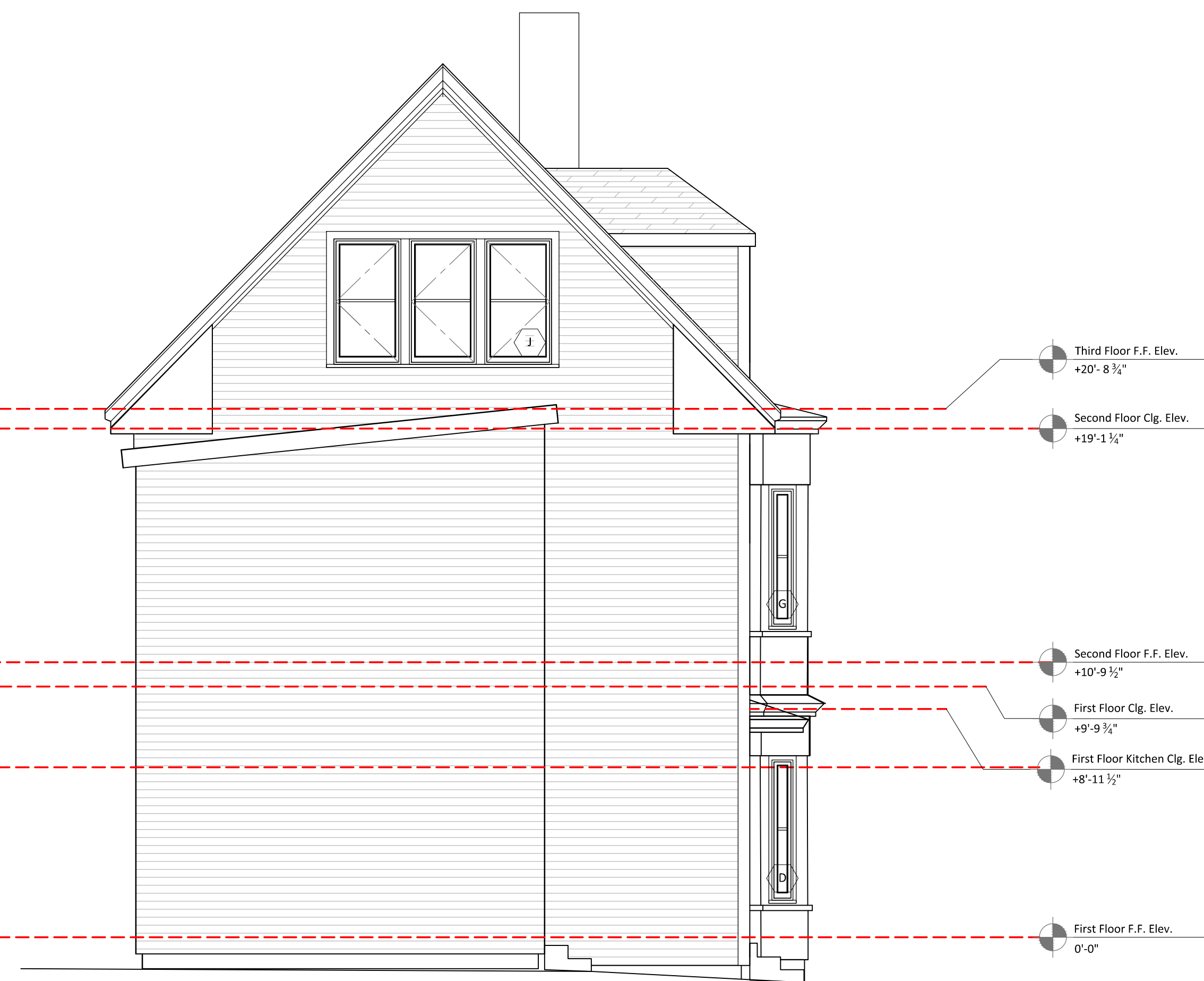


45' HEIGHT SETBACK



1 SOUTH ELEVATION  
 $\frac{1}{4}'' = 1'-0''$



2 NORTH ELEVATION  
 $\frac{1}{4}'' = 1'-0''$

- Third Floor F.F. Elev. +20'-8 1/2"
- Second Floor Clg. Elev. +19'-1 1/4"
- Second Floor F.F. Elev. +10'-9 1/2"
- First Floor Clg. Elev. +9'-9 1/2"
- First Floor Kitchen Clg. Elev. +8'-11 1/2"
- First Floor F.F. Elev. 0'-0"

Legend:

Construction to be removed

