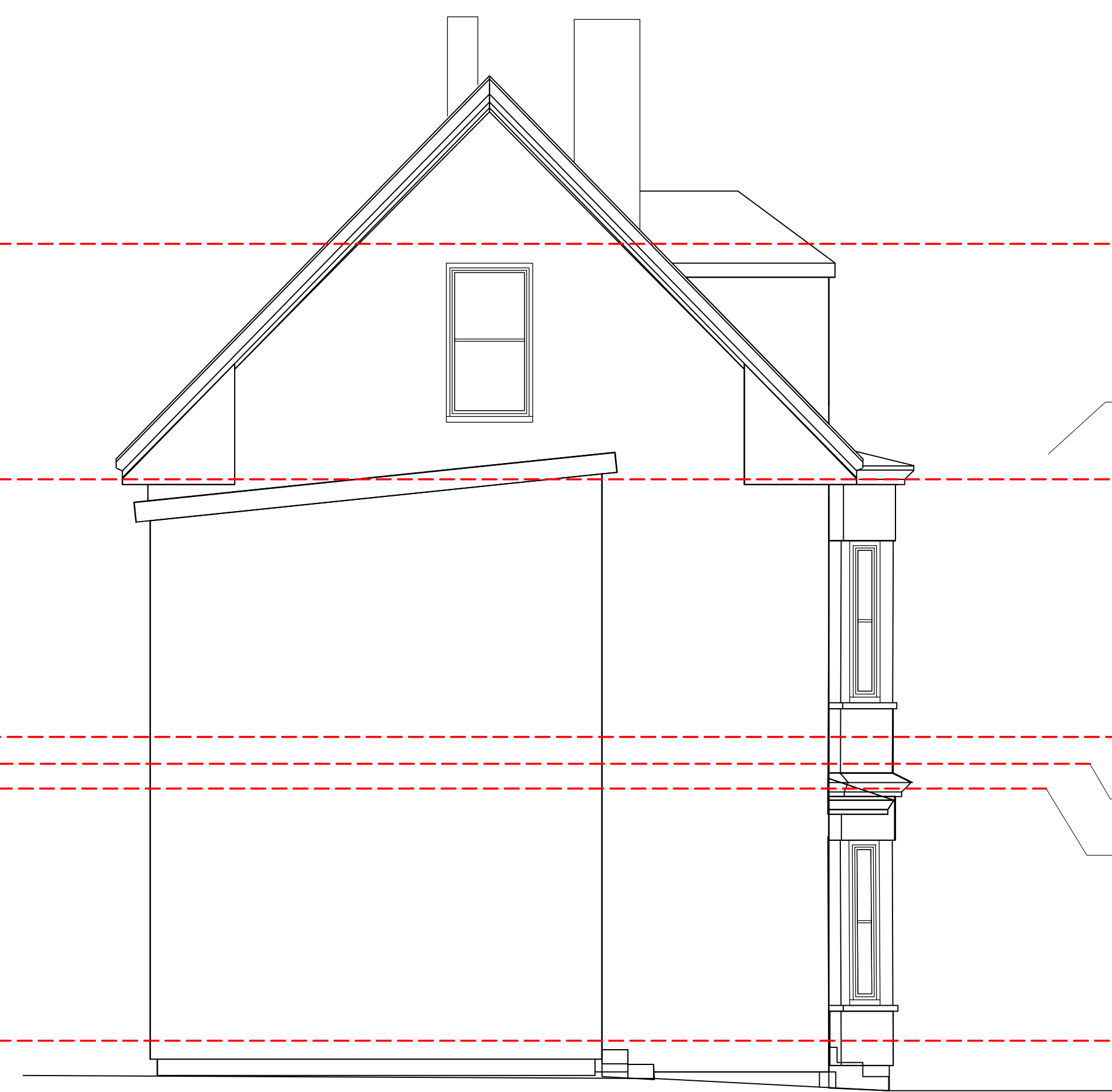




1 EXISTING SOUTH ELEVATION  
 $\frac{1}{4}'' = 1'-0''$



2 EXISTING NORTH ELEVATION  
 $\frac{1}{4}'' = 1'-0''$

- Third Floor Clg. Elev. +38'-3 1/2"
- Third Floor F.F. Elev. +20'-10"
- Second Floor Clg. Elev. +19'-1 1/2"
- Second Floor F.F. Elev. +10'-10"
- First Floor Clg. Elev. +9'-9 1/2"
- First Floor Kitchen Clg. Elev. +8'-11 1/2"
- First Floor F.F. Elev. 0'-0"

Legend:

Construction to be removed

