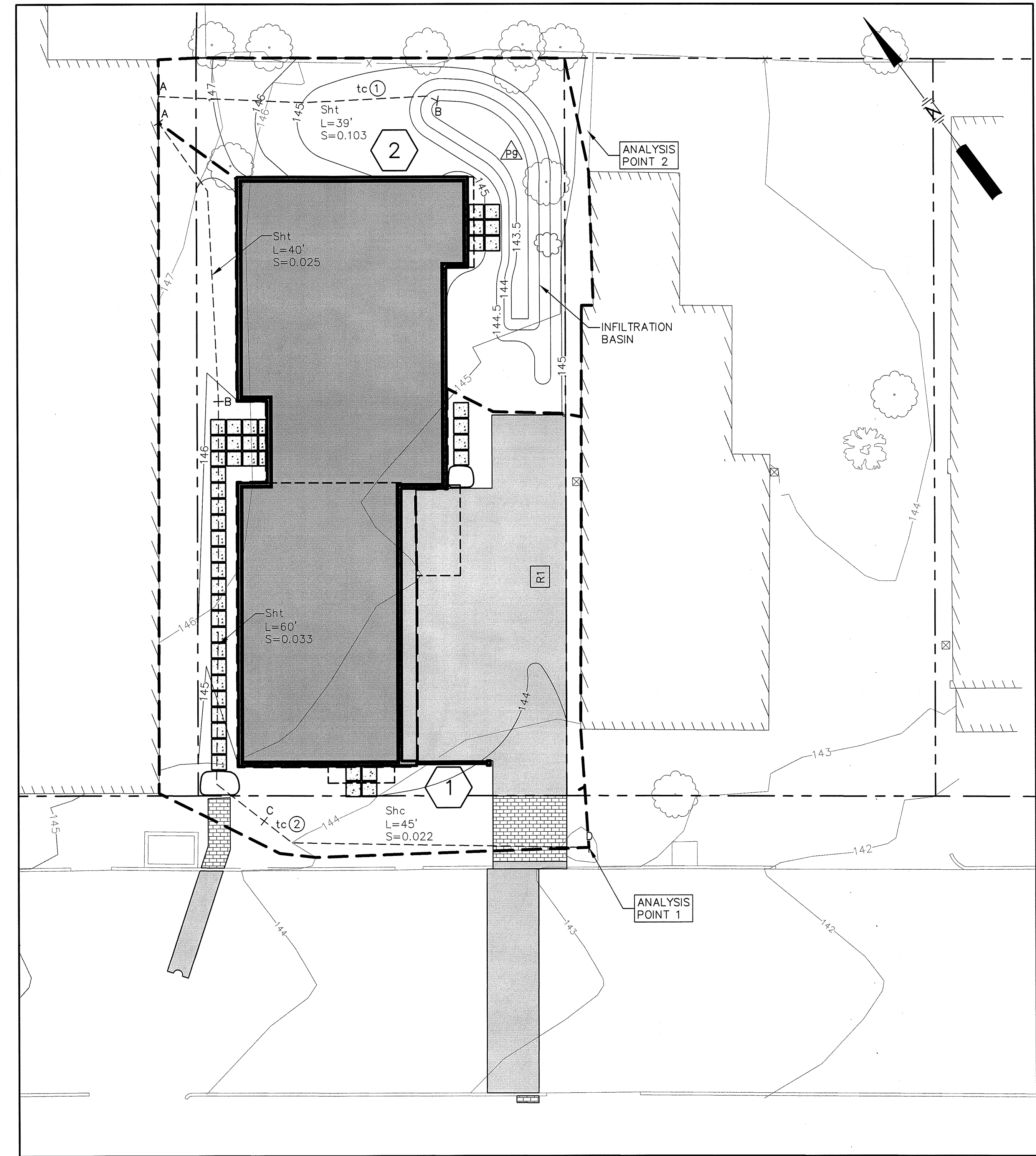


PRE-DEVELOPMENT CONDITIONS STORMWATER MANAGEMENT PLAN



POST DEVELOPMENT CONDITIONS STORMWATER MANAGEMENT PLAN

STORMWATER MANAGEMENT LEGEND

- SUBCATCHMENT DESIGNATION
- SUBCATCHMENT BOUNDARY
- TIME OF CONCENTRATION SEGMENT DESIGNATION
TIME OF CONCENTRATION PATH
- TIME OF CONCENTRATION TYPE, LENGTH AND SLOPE
- SHEET FLOW
- SHALLOW CONCENTRATED FLOW
- CHANNEL FLOW
- DRAINAGE REACH
- REACH DESIGNATION (HYDROCAD)
- POND/STRUCTURE DESIGNATION (HYDROCAD)
- TIME OF CONCENTRATION WITH SUBCATCHMENT DESIGNATION

NOTES:
 1. BASE MAP ADAPTED FROM PLAN ENTITLED "BOUNDARY & TOPOGRAPHIC SURVEY" BY OWEN HASKELL, INC., FALMOUTH, MAINE, DATED JUNE 11, 2014 AND PLAN ENTITLED "GRADING AND UTILITIES PLAN" BY PINKHAM & GREER CONSULTING ENGINEERS, DATED FEBRUARY 26, 2014.

REV.	BY	DATE	STATUS
DPD	7/15	SUBMITTED TO CITY OF PORTLAND FOR SITE PLAN REVIEW	

4 UNIT APARTMENT BUILDING
 93 ST. LAWRENCE STREET
 LARRY GROSS AND BARBARA COLBY
 PORTLAND, MAINE

STORMWATER MANAGEMENT PLAN

SME
 Sevee & Maher Engineers, Inc.

ENVIRONMENTAL • CIVIL • GEOTECHNICAL • WATER • COMPLIANCE
 4 Blanchard Road, PO Box 85A, Cumberland Center, Maine 04021
 Phone 207.829.5016 • Fax 207.829.5692 • www.smemaine.com

DESIGN BY: DPD
 DRAWN BY: JRL
 DATE: 4/27/2015
 CHECKED BY: [Signature]
 LMN: SMP-E/SMP-P
 CTB: SME-STD

JOB NO. 15086.00 DWG FILE BASE D-100