

- NOTES:**
1. BASE MAP ADAPTED FROM PLAN ENTITLED "BOUNDARY & TOPOGRAPHIC SURVEY" BY OWEN HASKELL, INC., FALMOUTH, MAINE, DATED JUNE 11, 2014.
 2. SITE FEATURES FROM PLAN ENTITLED "GRADING AND UTILITIES PLAN" BY PINKHAM & GREER CONSULTING ENGINEERS, DATED FEBRUARY 26, 2014.

GENERAL SITE NOTES:

1. RELOCATE EXISTING TBM INFORMATION ONTO NEW TBM OF CONTRACTORS CHOICE FOR CONSTRUCTION USE PRIOR TO REMOVAL OF EXISTING TBM.
2. EXCAVATE AND STOCKPILE ON-SITE TOPSOIL. TOPSOIL IS TO REMAIN THE PROPERTY OF THE OWNER DURING CONSTRUCTION, AND SHALL NOT BE REMOVED FROM THE SITE. AFTER FINAL LOAM AND SEED EXCESS TOPSOIL SHALL BE REMOVED FROM SITE BY CONTRACTOR.
3. DIMENSIONS ARE TO FACE OF CURB AND TO FACE OF FOUNDATION UNLESS OTHERWISE INDICATED.
4. PAVEMENT EDGES SHALL BE TRUE TO LINE. SAWCUT EXISTING PAVEMENT IN SMOOTH STRAIGHT LINE WHERE NEW PAVEMENT JOINS PROVIDE TACK COAT LAYER AS SPECIFIED.

GRADING NOTES:

1. ADD 6" LOAM, SEED AND MULCH TO DISTURBED AREAS UNLESS OTHERWISE NOTED. PROVIDE EROSION CONTROL MESH ON ALL SLOPES 6:1 OR STEEPER, AND ALONG DITCH CHANNELS.
2. GRADE SURFACES TO DRAIN AWAY FROM BUILDING. PUDDLING OF WATER IN PAVED OR UNPAVED AREAS WILL NOT BE ACCEPTABLE, EXCEPT FOR AREAS DESIGNATED AS PONDS.
3. MAINTAIN TEMPORARY EROSION CONTROL MEASURES FOR THE FULL DURATION OF CONSTRUCTION. INSPECT WEEKLY AND AFTER EACH STORM AND REPAIR AS NEEDED. REMOVE SEDIMENTS FROM THE SITE. PLACE IN AREA OF LOW EROSION POTENTIAL, AND STABILIZE WITH SEED AND MULCH.
4. PLACE TEMPORARY SOIL STABILIZATION WITHIN 30 DAYS OF INITIAL DISTURBANCE. PLACE PERMANENT SOIL STABILIZATION WITHIN 7 DAYS OF FINAL GRADING.

UTILITY NOTES:

1. THE ACCURACY AND COMPLETENESS OF SUBSURFACE INFORMATION IS NOT GUARANTEED. VERIFY SITE CONDITIONS INCLUDING TEST PITS FOR LOCATIONS AND INVERTS OF UTILITIES AND REPORT ANY DISCREPANCIES TO THE ENGINEER PRIOR TO PROCEEDING WITH THAT PORTION OF THE WORK.
2. PLACE 4 FOOT WIDE BY 2 INCH THICK TRENCH INSULATION OVER SEWER LINES WHERE DEPTH OF COVER OVER TOP OF PIPE IS LESS THAN 4 FEET. PLACE INSULATION ALSO BETWEEN SEWER LINE AND STORM DRAIN OR BETWEEN WATER LINE AND STORM DRAIN WHERE SEPARATION IS LESS THAN 5 FEET.
3. PROVIDE AT LEAST 5 FEET OF SOIL COVER OVER WATER LINES. SURROUND WATER PIPE WITH 6 INCHES OF CONCRETE ENCASEMENT, REINFORCED WITH WWF, AT CROSSINGS OF SEWER LINES UNLESS WATER IS ABOVE BY 18 INCH CLEARANCE. ENCASEMENT TO EXTEND 10 FEET BEYOND SEWER LINE IN BOTH DIRECTIONS.
4. PROVIDE CONCRETE THRUST BLOCKING FOR WATER LINES ACCORDING TO THE TABLE ON THE DETAIL SHEET.
5. CLEAN SEDIMENTS FROM NEW AND EXISTING STORM DRAIN PIPES AND CATCH BASINS.
6. COORDINATE WORK ON UTILITY LINES OR WITHIN ROAD RIGHT-OF-WAY WITH THE UTILITY COMPANIES AND CITY ROAD DEPARTMENT.
7. SLOPE CONDUITS AWAY FROM BUILDING TO HANDHOLE OR UTILITY POLE TO AVOID GROUND WATER SEEPAGE INTO BUILDING.
8. RESET RIMS OF EXISTING UTILITY STRUCTURES, MANHOLES AND CATCH BASINS TO NEW GRADE.

TYPICAL ABBREVIATIONS:

ACMP	ASPHALT COATED CMP	EA	EACH	NITC	NOT IN THIS CONTRACT
ACP	ASBESTOS CEMENT PIPE	EG	EXISTING GROUND OR GRADE	NTS	NOT TO SCALE
AC	ACRE	ELEC	ELECTRIC	N/F	NOW OR FORMERLY
AGG	AGGREGATE	EL	ELEVATION	NOR #	NUMBER
ALUM	ALUMINUM	ELB	ELBOW		
APPD	APPROVED	EOP	EDGE OF PAVEMENT	OC	ON CENTER
APPROX	APPROXIMATE	EQUIP	EQUIPMENT	OD	OUTSIDE DIAMETER
ARMH	AIR RELEASE MANHOLE	EST	ESTIMATED		
ASB	ASBESTOS	EXC	EXCAVATE	PC	POINT OF CURVE
ASP	ASPHALT	EXIST	EXISTING	PD	PERIMETER DRAIN
AUTO	AUTOMATIC			PI	POINT OF INTERSECTION
AUX	AUXILIARY	FI	FIELD INLET	PIV	POST INDICATOR VALVE
AVE	AVENUE	FG	FINISH GRADE	PT	POINT OF TANGENT
AZ	AZIMUTH	FBRGL	FIBERGLASS	PERF	PERFORATED
		FDN	FOUNDATION	PP	POWER POLE
		FLEX	FLEXIBLE	PSI	POUNDS PER SQUARE INCH
BCCMP	BITUMINOUS COATED CMP	FLG	FLANGE	PVC	POLYVINYL CHLORIDE
BM	BENCH MARK	FLR	FLOOR	PVMT	PAVEMENT
BIT	BITUMINOUS	FPS	FEET PER SECOND		
BLDG	BUILDING	FT OR	FEET	QTY	QUANTITY
BOT	BOTTOM	FTG	FOOTING	RCP	REINFORCED CONCRETE PIPE
BRG	BEARING			ROW	RIGHT OF WAY
BV	BALL VALVE	GA	GAUGE	RAD	RADIUS
CB	CATCH BASIN	GAL	GALLON	REQD	REQUIRED
CEN	CENTER	GALV	GALVANIZED	RT	RIGHT
CEM LIN	CEMENT LINED	GPD	GALLONS PER DAY	RT	ROUTE
CMP	CORRUGATED METAL PIPE	GPM	GALLONS PER MINUTE		
CO	CLEAN OUT	HDPE	HIGH DENSITY POLYETHYLENE	S	SLOPE
CF	CUBIC FEET	HORIZ	HORIZONTAL	SCH	SCHEDULE
CFS	CUBIC FEET PER SECOND	HP	HORSEPOWER	SF	SQUARE FEET
CI	CAST IRON	HYD	HYDRANT	SHT	SHEET
CL	CLASS	ID	INSIDE DIAMETER	SMH	SANITARY MANHOLE
CONC	CONCRETE	IN OR "	INCHES	ST	STREET
CONST	CONSTRUCTION	INV	INVERT	STA	STATION
CONTR	CONTRACTOR	INV EL	INVERT ELEVATION	SY	SQUARE YARD
CS	CURB STOP	LB	POUND	TAN	TANGENT
CTR	CENTER	LC	LEACHATE COLLECTION	TDH	TOTAL DYNAMIC HEAD
CU	COPPER	LD	LEAK DETECTION	TEMP	TEMPORARY
CY	CUBIC YARD	LF	LINEAR FEET	TYP	TYPICAL
		LOC	LOCATION	UD	UNDERDRAIN
D	DEGREE OF CURVE	LT	LEACHATE TRANSPORT	V	VOLTS
DBL	DOUBLE	MH	MANHOLE	VA TEE	VALVE ANCHORING TEE
DEG OR °	DEGREE	MJ	MECHANICAL JOINT	VERT	VERTICAL
DEPT	DEPARTMENT	MATL	MATERIAL	WG	WATER GATE
DI	DUCTILE IRON	MAX	MAXIMUM	W	WITH
DIA OR Ø	DIAMETER	MFR	MANUFACTURE	W/O	WITHOUT
		MIN	MINIMUM	YD	YARD
		MISC	MISCELLANEOUS		
		MON	MONUMENT		

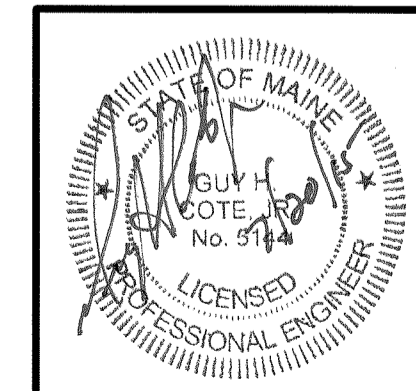
DIG SAFE NOTES:

- PRIOR TO EXCAVATION, VERIFY THE UNDERGROUND UTILITIES, PIPES, STRUCTURES AND FACILITIES. PROVIDE THE FOLLOWING MINIMUM MEASURES:
1. PRE-MARK THE BOUNDARIES OF YOUR PLANNED EXCAVATION WITH WHITE PAINT, FLAGS OR STAKES, SO UTILITY CREWS KNOW WHERE TO MARK THEIR LINES.
 2. CALL DIG SAFE AT 811 AT LEAST THREE BUSINESS DAYS - BUT NO MORE THAN 30 CALENDAR DAYS - BEFORE STARTING WORK. DO NOT ASSUME SOMEONE ELSE WILL MAKE THE CALL.
 3. IF BLASTING, NOTIFY DIG SAFE AT LEAST ONE BUSINESS DAY IN ADVANCE.
 4. WAIT THREE BUSINESS DAYS FOR LINES TO BE LOCATED AND MARKED WITH COLOR-CODED PAINT, FLAGS OR STAKES. NOTE THE COLOR OF THE MARKS AND THE TYPE OF UTILITIES THEY INDICATE. TRANSFER THESE MARKS TO THE AS-BUILT DRAWINGS.
 5. CONTACT THE LANDOWNER AND OTHER "NON-MEMBER" UTILITIES (WATER, SEWER, GAS, ETC.) FOR THEM TO MARK THE LOCATIONS OF THEIR UNDERGROUND FACILITIES. TRANSFER THESE MARKS TO THE AS-BUILT DRAWINGS.
 6. RE-NOTIFY DIG SAFE AND THE NON-MEMBER UTILITIES IF THE DIGGING, DRILLING OR BLASTING DOES NOT OCCUR WITHIN 30 CALENDAR DAYS OF INITIAL NOTIFICATION, OR IF THE MARKS ARE LOST DUE TO WEATHER CONDITIONS, SITE WORK ACTIVITY OR ANY OTHER REASON.
 7. HAND DIG WITHIN 18 INCHES IN ANY DIRECTION OF ANY UNDERGROUND LINE UNTIL THE LINE IS EXPOSED. MECHANICAL METHODS MAY BE USED FOR INITIAL SITE PENETRATION, SUCH AS REMOVAL OF PAVEMENT OR ROCK.
 8. DIG SAFE REQUIREMENTS ARE IN ADDITION TO TOWN, CITY AND/OR STATE DOT STREET OPENING PERMIT REQUIREMENTS.
 9. FOR COMPLETE DIG SAFE REQUIREMENTS, CALL THE PUBLIC UTILITIES COMMISSION (PUC) OR VISIT THEIR WEBSITE.
 10. IF YOU DAMAGE, DISLOCATE OR DISTURB ANY UNDERGROUND UTILITY LINE, IMMEDIATELY NOTIFY THE AFFECTED UTILITY. IF DAMAGE CREATES SAFETY CONCERNS, CALL THE FIRE DEPARTMENT AND TAKE IMMEDIATE STEPS TO SAFEGUARD HEALTH AND PROPERTY.
 11. ANY TIME AN UNDERGROUND LINE IS DAMAGED OR DISTURBED OR IF LINES ARE IMPROPERLY MARKED, YOU MUST FILE AN INCIDENT REPORT WITH THE PUC FOR AN INCIDENT REPORT FORM VISIT WWW.STATE.ME.US/MPUC OR CALL THE PUC AT 1-800-452-4699.

EXISTING	LEGEND	PROPOSED
---	PROPERTY LINE	---
	BUILDING	---
---	EDGE OF PAVEMENT	---
---	CURB	---
100	CONTOUR	100
---	SPOT GRADE	114.23
x	FENCE	x
SD	STORM DRAIN	SD
UD	UNDERDRAIN	UD
□	CATCH BASIN	□
○	DRAINAGE MANHOLE	●
SS	SANITARY SEWER LINE	SS
○	SANITARY SEWER MANHOLE	●
○	UTILITY POLE	●
UGU	UNDERGROUND UTILITY	UGU
OHE	OVERHEAD UTILITY	OHE
---	LIGHT POLE	●
---	WALL MOUNTED LIGHT	●
W	WATER LINE	W
---	WATER GATE VALVE	---
---	HYDRANT	---
---	PERFORATED POWER POLE	---
---	POUNDS PER SQUARE INCH	---
---	PVC	---
---	PVMT	---
---	CONCRETE	---
---	CRUSHED STONE	---

EROSION CONTROL LEGEND

□	CATCH BASIN PROTECTION WITH SILTSACK
SF	SILT FENCE
---	CHECK DAM
---	STABILIZED ENTRANCE



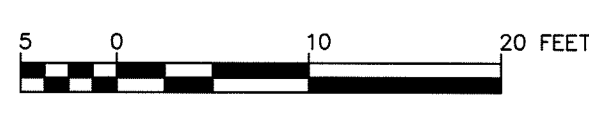
4 UNIT APARTMENT BUILDING
93 ST. LAWRENCE STREET
LARRY GROSS AND BARBARA COLBY
PORTLAND, MAINE

GENERAL NOTES, LEGEND AND ABBREVIATIONS AND EXISTING CONDITIONS AND DEMOLITION PLAN

SME
Sevee & Maher Engineers, Inc.
 ENVIRONMENTAL • CIVIL • GEOTECHNICAL • WATER • COMPLIANCE
 4 Blanchard Road, PO Box 85A, Cumberland Center, Maine 04021
 Phone 207.829.5016 • Fax 207.829.5692 • www.smeinc.com

DESIGN BY: DPD
 DRAWN BY: JRL
 DATE: 4/27/2015
 CHECKED BY: [Signature]
 LMN: LMN
 CTB: SME-STD

JOB NO. 15086.00 DWG FILE BASE
C-100



REV.	BY	DATE	STATUS
	DPD	7/15	SUBMITTED TO CITY OF PORTLAND FOR SITE PLAN REVIEW