

Owner/Applicant
Larry Gross
PO Box 10152
Portland Maine, 04104

Consultant:

Architect:
ARCHETYPE
architects
48 Union Wharf Portland, Maine 04101
(207) 772-6022 Fax (207) 772-4056

Project:
4 Unit Apartment Building
93 St. Lawrence Street
Portland Maine, 04101
CBL: 016 D010001 B&P 17503/310

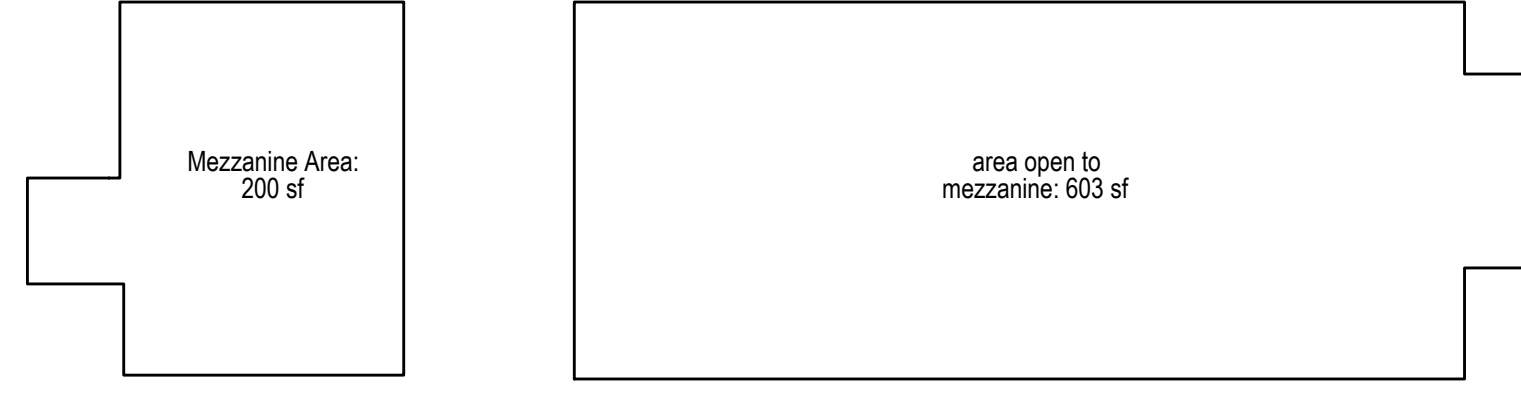
Revisions:

Date:
21 July, 2015

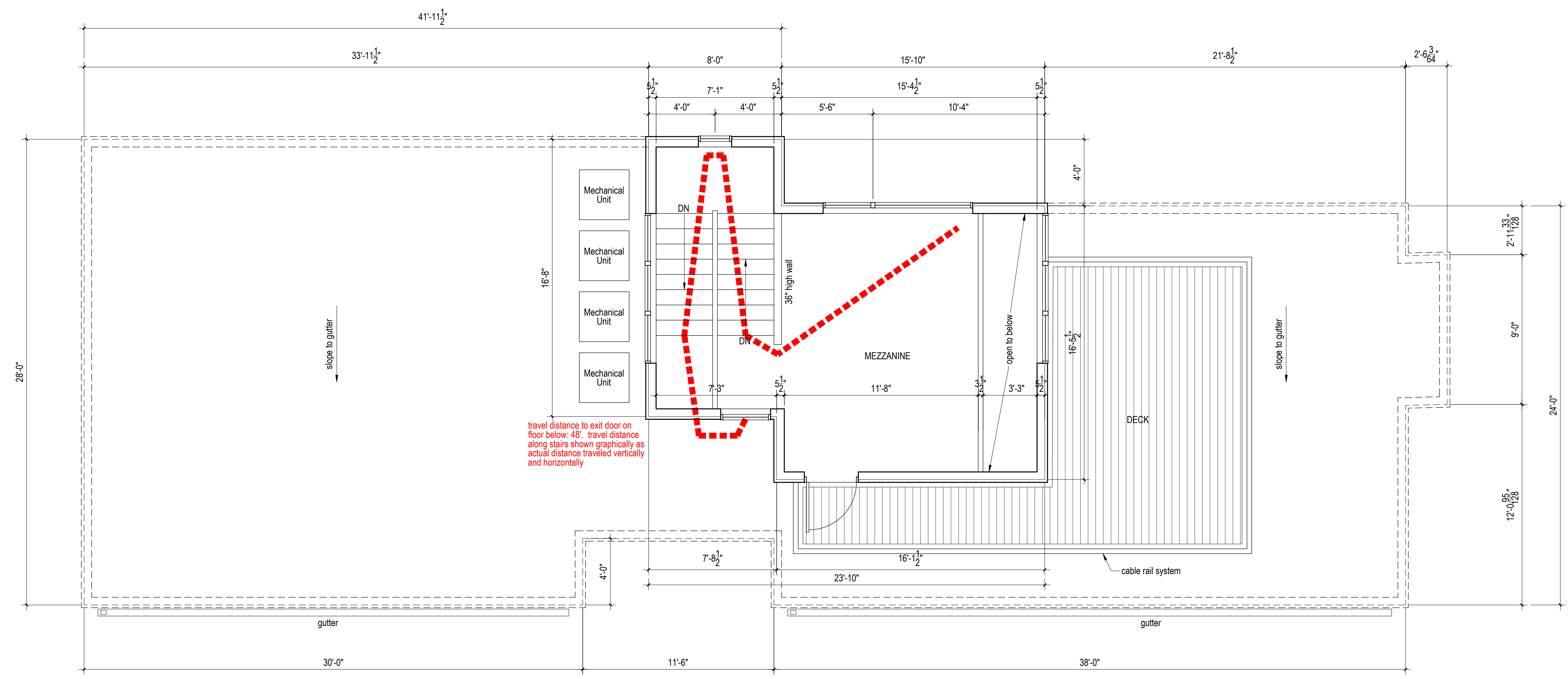
Scale:
as noted

Submission to
Planning Board

A1.04



1 Mezzanine Calculation
1/8" = 1'-0"



1 Roof & Mezzanine Plan
1/4" = 1'-0"

travel distance to exit door on floor below: 48'. travel distance along stairs shown graphically as actual distance traveled vertically and horizontally