

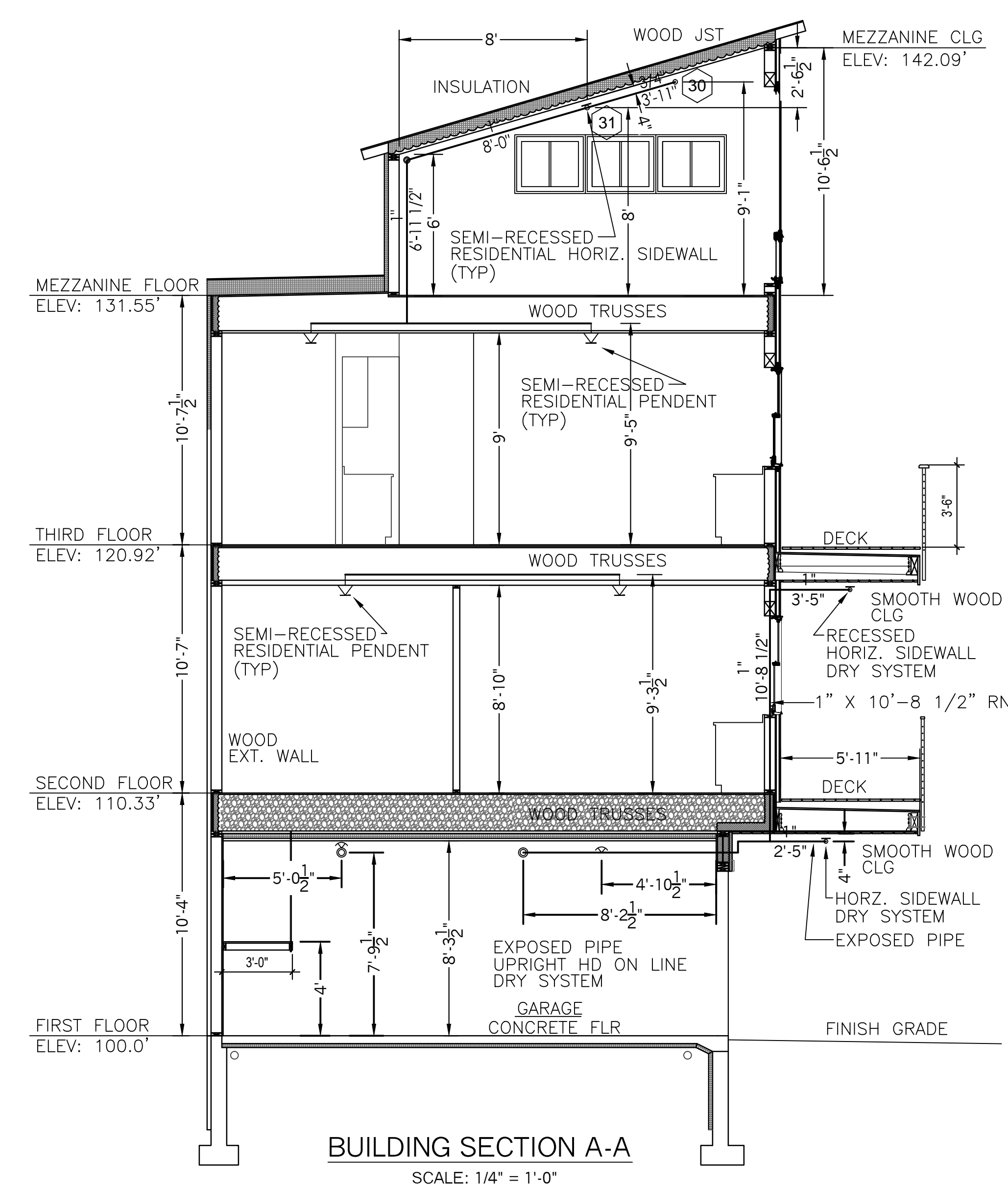
FOURTH FLOOR PLAN  
SCALE: 1/4" = 1'-0"  
FF ELEV: 131.55'

SPRINKLER HEAD INFORMATION, FOR THIS FLOOR ONLY

QTY	SIZE	ORIFICE	K-FACTOR	DESCRIPTION	MODEL	TEMP	ESCUTCHEON	SYMBOL
2	1/2"	7/16"	4.0	VIKING RES. WHITE HOR. SIDEWALL	VK486	155	RECESSED	

TOTAL HD'S= 2

HYDRAULIC CALCULATION INFORMATION			
LOCATION: MEZZANINE FLOOR			
BASIS OF DESIGN: NFPA 13, 2007 EDITION			
DENSITY	.0508	AREA OF COVERAGE	2 HEADS
OCCUPANCY: RESIDENTIAL			
SPRINKLERS:	TOTAL 2	THRD 1/2"	ORIFICE 7/16" TEMP 155
SYSTEM DEMAND AT BASE OF RISER (BOR):			
PRESSURE	40.77 PSI	FLOW 27.1 GPM	HOSE 0
SAFETY MARGIN: 8.79 PSI			

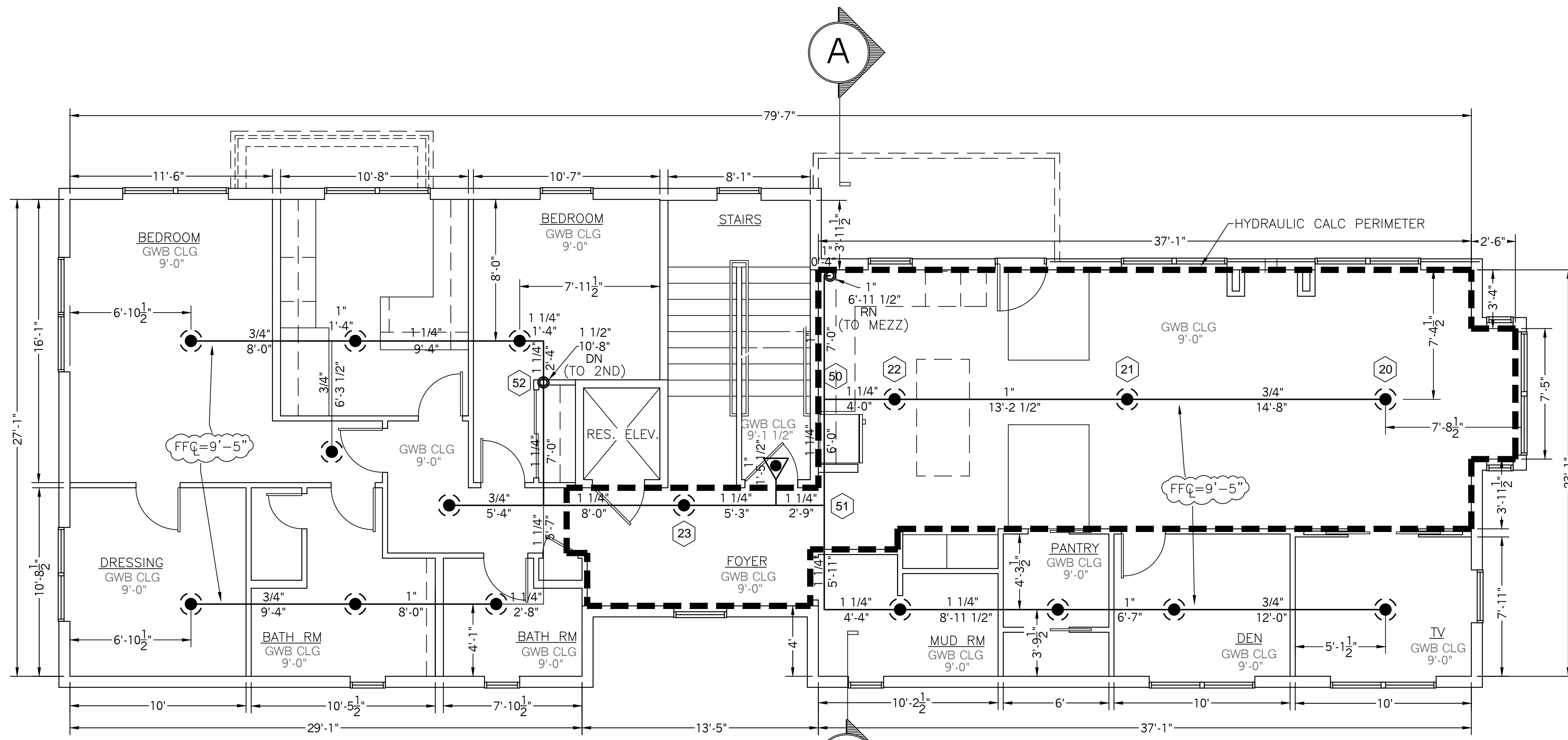


BUILDING SECTION A-A  
SCALE: 1/4" = 1'-0"

HYDRAULIC CALCULATION INFORMATION			
LOCATION: THIRD FLOOR			
BASIS OF DESIGN: NFPA 13, 2007 EDITION			
DENSITY	.0508	AREA OF COVERAGE	4 HEADS
OCCUPANCY: RESIDENTIAL			
SPRINKLERS:	TOTAL 4	THRD 1/2"	ORIFICE 7/16" TEMP 155
SYSTEM DEMAND AT BASE OF RISER (BOR):			
PRESSURE	47.4 PSI	FLOW 58.86 GPM	HOSE 0
SAFETY MARGIN: 2.11 PSI			

NFPA 13R NOTES:

- SPRINKLERS SHALL BE INSTALLED IN ALL AREA'S EXCEPT THE FOLLOWING:
- BATHROOM'S WHERE THE AREA DOES NOT EXCEED 55 SF
  - CLOTHES CLOSET'S, LINEN CLOSET'S AND PANTRIES THAT MEET THE FOLLOWING CONDITIONS:
    - THE AREA OF THE SPACE DOES NOT EXCEED 24 SF
    - THE LEAST DIMENSION DOES NOT EXCEED 3'-0"
    - THE WALLS AND CEILINGS ARE SURFACED WITH NON-COMBUSTIBLE OR LIMITED COMBUSTIBLE MATERIALS.
  - SPRINKLERS SHALL BE INSTALLED IN ANY CLOSET USED FOR HEATING OR AIR CONDITIONING EQUIPMENT
  - PORCHES, BALCONIES, CORRIDORS AND STAIRS THAT ARE OPEN AND ATTACHED
  - ATTICS, PENTHOUSES, EQUIPMENT ROOMS, ELEVATOR MACHINE ROOMS, CONCEALED SPACES DEDICATED EXCLUSIVELY TO AND CONTAINING ONLY DWELLING UNIT VENTILATION EQUIPMENT, CRAWL SPACES, FLOOR/CEILING SPACES, NON-COMBUSTIBLE ELEVATOR SHAFTS WITH THE CAR IN COMPLIANCE WITH ANSI A17.1 "SAFETY CODE FOR ELEVATORS" AND OTHER CONCEALED SPACES THAT ARE NOT USED OR INTENDED FOR LIVING PURPOSES OR STORAGE AND DO NOT CONTAIN FUEL FIRED EQUIPMENT
  - CLOSETS ON EXTERIOR BALCONIES, REGARDLESS OF SIZE, AS LONG AS THERE ARE NO DOORS OR UNPROTECTED PENETRATIONS FROM THE CLOSET DIRECTLY INTO THE DWELLING UNIT.

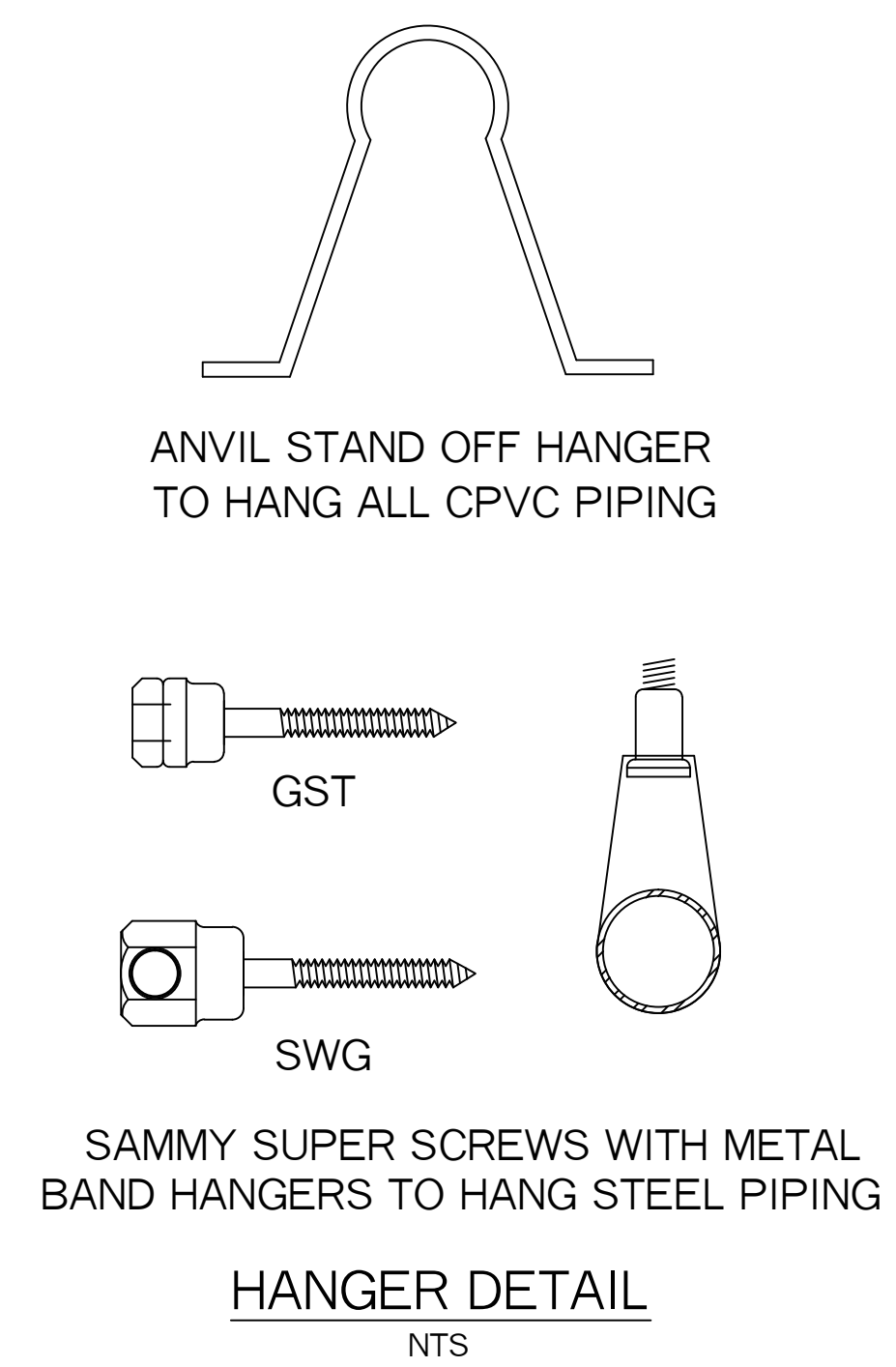


THIRD FLOOR PLAN (UNIT #3)  
SCALE: 1/4" = 1'-0"  
FF ELEV: 120.92'

SPRINKLER HEAD INFORMATION, FOR THIS FLOOR ONLY

QTY	SIZE	ORIFICE	K-FACTOR	DESCRIPTION	MODEL	TEMP	ESCUTCHEON	SYMBOL
1	1/2"	7/16"	4.0	VIKING RES. WHITE HOR. SIDEWALL	VK486	155	RECESSED	
16	1/2"	7/16"	4.9	VIKING RES. WHITE PENDENT	VK468	155	RECESSED	

TOTAL HD'S= 17



PROJECT NAME: <b>93 SAINT LAWRENCE ST. APT'S</b> 93 SAINT LAWRENCE STREET PORTLAND, ME. 04101	FIRE SPRINKLER PLANS AND DETAILS REQUIRED APPROVALS: STATE FIRE MARSHALS OFFICE LOCAL FIRE DEPARTMENT OWNER	RESIDENTIAL FIRE PROTECTION, LLC DATE: 4-18-2016 SCALE: 1/4" = 1'-0"
CONTRACT WITH: <b>GREAT FALLS CONSTRUCTION</b> 20 MECHANIC STREET GORHAM, ME. 04038 PH: (207) 839-2744	DRAWN BY: TPP NICET II (08866) CERTIFICATION # 100856 CHECKED BY: SJC NICET II (08866) CERTIFICATION # 78065 CONTRACTOR LICENSE #511	DATE: 4-18-2016 SCALE: 1/4" = 1'-0" CONTRACT NO. C16014 DRAWING NO. 2 OF 2
<b>RESIDENTIAL FIRE PROTECTION</b> 64 DAGGETT HILL ROAD, GREENE, MAINE 04236		