

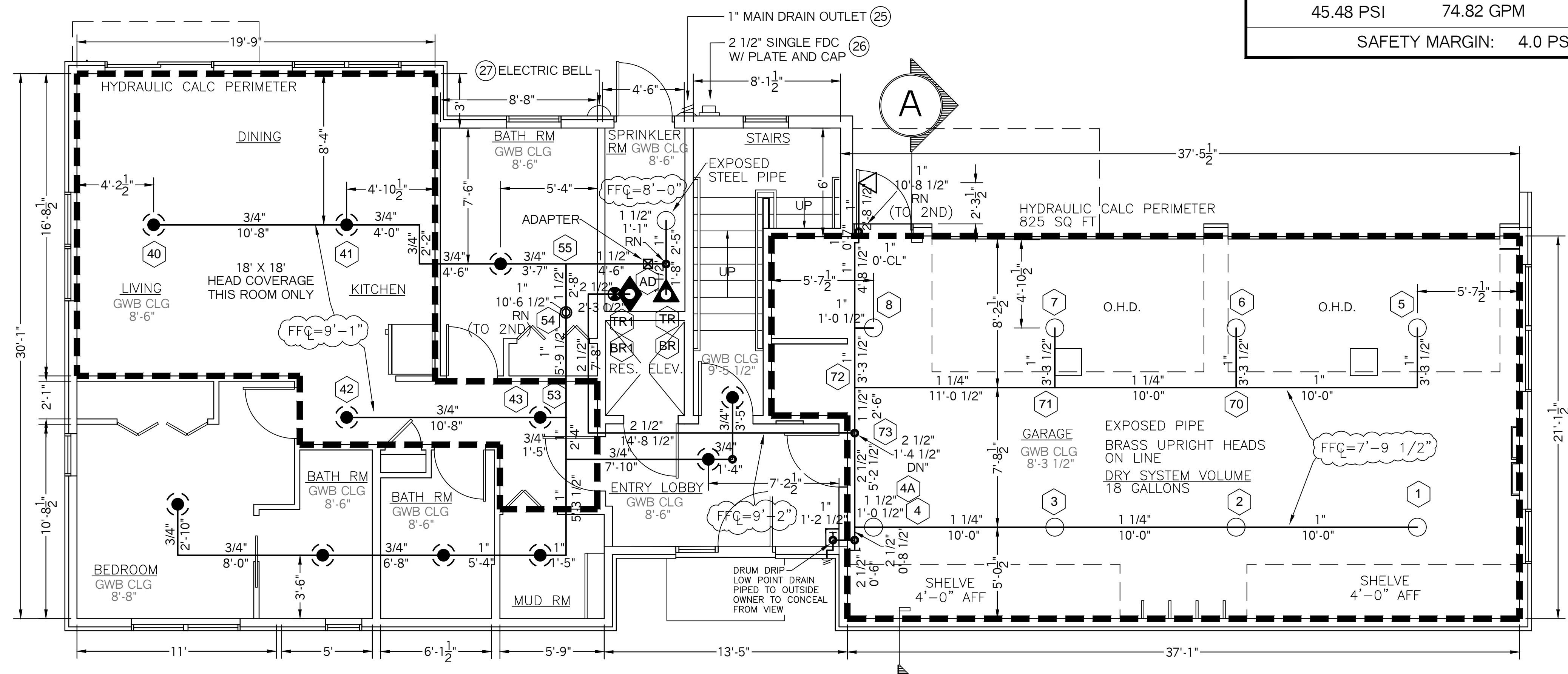
**SECOND FLOOR PLAN (UNIT #2)**  
SCALE: 1/4" = 1'-0"  
FF ELEV: 110.33'

**SPRINKLER HEAD INFORMATION, FOR THIS FLOOR ONLY**

QTY	SIZE	ORIFICE	K-FACTOR	DESCRIPTION	MODEL	TEMP	ESCUTCHEON	SYMBOL
18	1/2"	7/16"	4.9	VIKING RES. WHITE PENDENT	VK468	155	RECESSED	●
1	1/2"	7/16"	4.0	VIKING RES. WHITE HOR. SIDEWALL	VK486	155	RECESSED	◀
1	1/2"	1/2"	5.6	VIKING BRASS HORZ. SIDEWALL	VK305	155	RECESSED	◀

TOTAL HD'S= 20

HYDRAULIC CALCULATION INFORMATION:			
LOCATION: 1ST FLR UNIT			
BASIS OF DESIGN: NFPA 13, 2007 EDITION:			
DENSITY	AREA OF COVERAGE		
.0525	4 HEADS		
OCCUPANCY: APARTMENT			
SPRINKLERS:	TOTAL	THRD	ORIFICE TEMP
	4	1/2"	7/16" 155
SYSTEM DEMAND AT BASE OF RISER (BOR):			
PRESSURE	FLOW	HOSE	
45.48 PSI	74.82 GPM	0	
SAFETY MARGIN: 4.0 PSI			



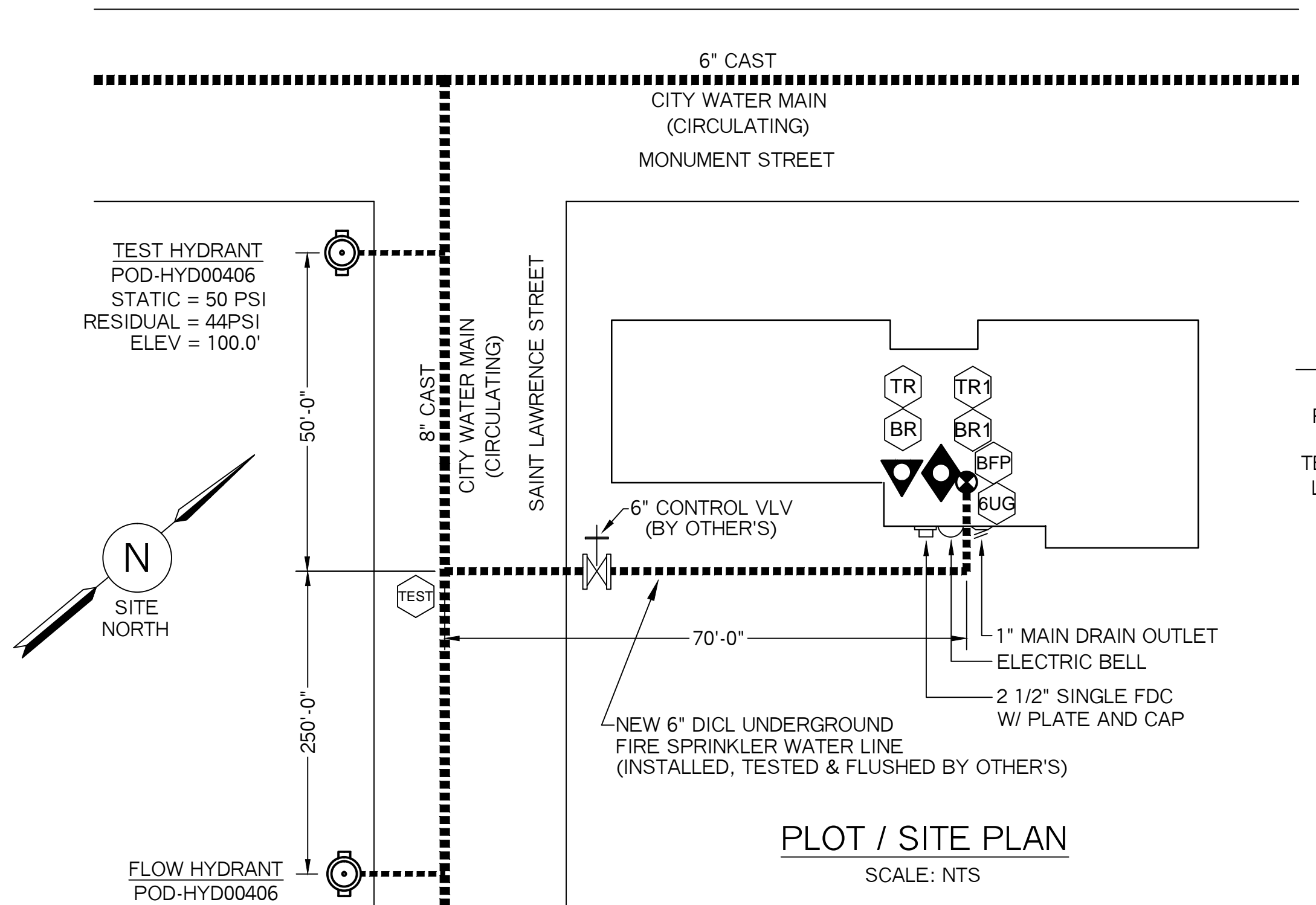
**FIRST FLOOR PLAN**  
SCALE: 1/4" = 1'-0"  
FF ELEV: 100.0'

**SPRINKLER HEAD INFORMATION, FOR THIS FLOOR ONLY**

QTY	SIZE	ORIFICE	K-FACTOR	DESCRIPTION	MODEL	TEMP	ESCUTCHEON	SYMBOL
1	1/2"	1/2"	5.6	BRASS HORIZ. SIDEWALL	VK305	155		○
11	1/2"	7/16"	4.9	VIKING RES. WHITE PENDENT	VK468	155	RECESSED	●
9	1/2"	1/2"	5.6	BRASS UPRIGHT, ON LINE	VK300	155	NONE	○

TOTAL HD'S= 21

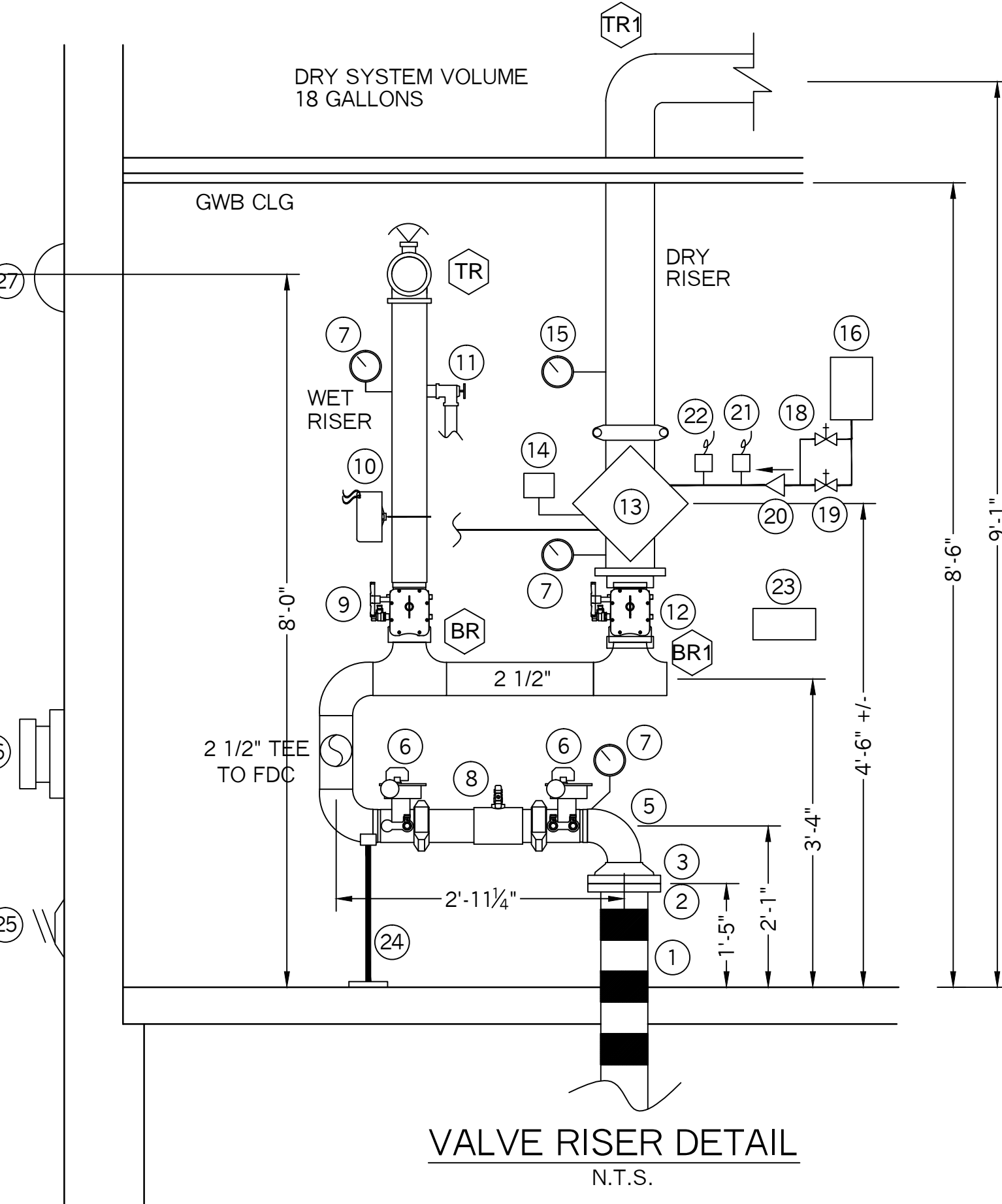
- SYSTEM SYMBOL LEGEND:**
- ④ = HYDRAULIC CALCULATION REFERENCE POINT
  - = HANGER
  - ⊘ = DRAIN VALVE
  - ⊞ = PLUG
  - ◊ = DRY VALVE RISER
  - ◄ = WET SHOT-GUN RISER
  - ⊙ = HYDRANT
  - N.I.C. = NOT IN CONTRACT
  - LPD = LOW POINT DRAIN
  - N.O. = NORMALLY OPEN
  - N.C. = NORMALLY CLOSED
  - = WATER SPIGOT LOCATION



**PLOT / SITE PLAN**  
SCALE: NTS

**WATER SUPPLY DATA**

STATIC = 50 PSI  
RESIDUAL = 44 PSI  
FLOW = 919 GPM  
TEST DATE = 4-30-2014  
LOCATION = CORNER OF ST LAWRENCE ST. AND MONUMENT ST.  
SOURCE = PORTLAND WATER DIST.



**VALVE RISER DETAIL**  
N.T.S.

- VALVE RISER LEGEND**
- 1 3" CVPC U.G. SPIGOT, PLUMB AND LEVEL (BY OTHER'S)
  - 2 3" UNI-FLANGE (BY OTHER'S)
  - 3 3" GROOVED FLANGE
  - 4 3" X 2 1/2" GROOVED CONCENTRIC REDUCER
  - 5 2 1/2" GROOVED ELBOW
  - 6 2 1/2" BUTTERFLY VLV W/ TAMPER SWITCH (N.O.)
  - 7 WATER PRESSURE GAUGE (3.5" DIA.)
  - 8 2 1/2" AMES COLT "C200" DC BFP
  - 9 1 1/2" BUTTERFLY VALVE WITH TAMPER SWITCH (N.O.)
  - 10 POTTER VSR-1 1/2" VANE TYPE FLOWSWITCH
  - 11 1" TEST-N-DRAIN VALVE (7/16" TEST ORIFICE) (N.C.)
  - 12 2 1/2" GROOVED BUTTERFLY VALVE WITH TAMPER SWITCH (N.O.)
  - 13 2 1/2" VICTAULIC FIRELOCK "NXT" SERIES 768 DRY PIPE VALVE
  - 14 POTTER PS-10 PRESSURE SWITCH
  - 15 AIR GAUGE
  - 16 1/16 HP GAST RISER MOUNTED AIR COMPRESSOR, 120V DEDICATED CIRCUIT BREAKER
  - 17 NOT USED
  - 18 1/4" BY-PASS LINE WITH VALVE (N.O.)
  - 19 1/2" AIR LINE SHUT-OFF VALVE (N.C.)
  - 20 1/2" AIR LINE CHECK VALVE
  - 21 COMPRESSOR ON-OFF SWITCH
  - 22 LOW AIR SWITCH, 20-40
  - 23 SPARE HEAD BOX, 6 HD CAPACITY W/ WRENCH
  - 24 PIPE STAND
  - 25 1" GALV. 45 ELBOW W/ GALV. GRINNELL PLATE (MAIN DRAIN)
  - 26 2 1/2" SINGLE FDC W/ WALL PLATE, CAP & CHAIN SEE MAIN FLR PLAN FOR LOCATION
  - 27 ELECTRIC BELL, 6" DIA., WITH BACKBOX, DEDICATED CIRCUIT POWER (MOUNTED TO OUTSIDE BY OTHERS)

**SYSTEM GENERAL NOTES:**

- A NEW WET PIPE FIRE SPRINKLER SYSTEM FOR ALL HEATED AREA'S AND A NEW DRY PIPE SYSTEM FOR THE UNHEATED GARAGE. BOTH SYSTEMS WILL BE DESIGNED, INSTALLED AND TESTED PER NFPA 13R STANDARDS.
- NEW 6" DUCTILE-IRON WATER MAIN TO BE INSTALLED, TESTED AND FLUSHED BY OTHER'S IN ACCORDANCE WITH NFPA 24 AND LOCAL CODES.
- RESIDENTIAL FIRE PROTECTION TO START AT 6" UNI-FLANGE 1'-0" +/- AFF, PLUMB AND LEVEL, AT THE END OF THE 6" DUCTILE-IRON WATER MAIN.
- A 2 1/2" DOUBLE-CHECK BACKFLOW PREVENTER WILL BE INSTALLED IN A HORIZONTAL POSITION BEFORE THE SYSTEM RISERS.
- EXPOSED LINE PIPING IN THE SPRINKLER RM AND GARAGE TO BE SCHEDULE 40 BLACK STEEL WITH THREADED C.I. FITTINGS AND BRASS UPRIGHT HEADS ON LINE.
- CVPC BLAZEMASTERS PLASTIC PIPE AND FITTINGS TO BE INSTALLED ON THE FIRST, SECOND, THIRD AND MEZZANINE FLOORS. ALL CVPC PIPE TO BE CONCEALED FROM VIEW, INSTALLED IN WALLS, ABOVE GWB CEILINGS, AND IN SOFFITS. WHITE RECESSED HEADS ON DROP'S SHALL BE INSTALLED ON THE CEILING.
- WHITE RECESSED RESIDENTIAL SIDEWALL HEADS WILL BE INSTALLED WHERE PIPE IS CONCEALED BY SOFFITS. SOFFITS TO BE BUILT BY OWNER

HYDRAULIC CALCULATION INFORMATION:			
LOCATION: GARAGE			
BASIS OF DESIGN: NFPA 13, 2007 EDITION:			
DENSITY	AREA OF COVERAGE		
.15	825 SQ FT		
OCCUPANCY: CAR GARAGE			
SPRINKLERS:	TOTAL	THRD	ORIFICE TEMP
	8	1/2"	1/2" 155
SYSTEM DEMAND AT BASE OF RISER (BOR):			
PRESSURE	FLOW	HOSE	
47.15 PSI	179.3 GPM	250	
SAFETY MARGIN: 0.78 PSI			

PROJECT NAME: <b>93 SAINT LAWRENCE ST. APT'S</b> 93 SAINT LAWRENCE STREET PORTLAND, ME. 04101	FIRE SPRINKLER PLANS AND DETAILS REQUIRED APPROVALS: STATE FIRE MARSHALS OFFICE LOCAL FIRE DEPARTMENT OWNER	RESIDENTIAL FIRE PROTECTION, LLC DATE: 4-18-2016 SCALE: 1/4" = 1'-0"
CONTRACT WITH: <b>GREAT FALLS CONSTRUCTION</b> 20 MECHANIC STREET GORHAM, ME. 04038 PH: (207) 839-2744	DRAWN BY: TPP NICET # 100854 CERTIFICATION # 100854 CHECKED BY: SJC NICET # 08854 CERTIFICATION # 78065 CONTRACTOR LICENSE #511	DATE: 4-18-2016 SCALE: 1/4" = 1'-0" CONTRACT NO. C16014 DRAWINGS NO. 1 OF 2
<b>RESIDENTIAL FIRE PROTECTION</b> 64 DAGGETT HILL ROAD, GREENE, MAINE 04236 PH: (207) 946-3473 FAX: (207) 946-3474		