

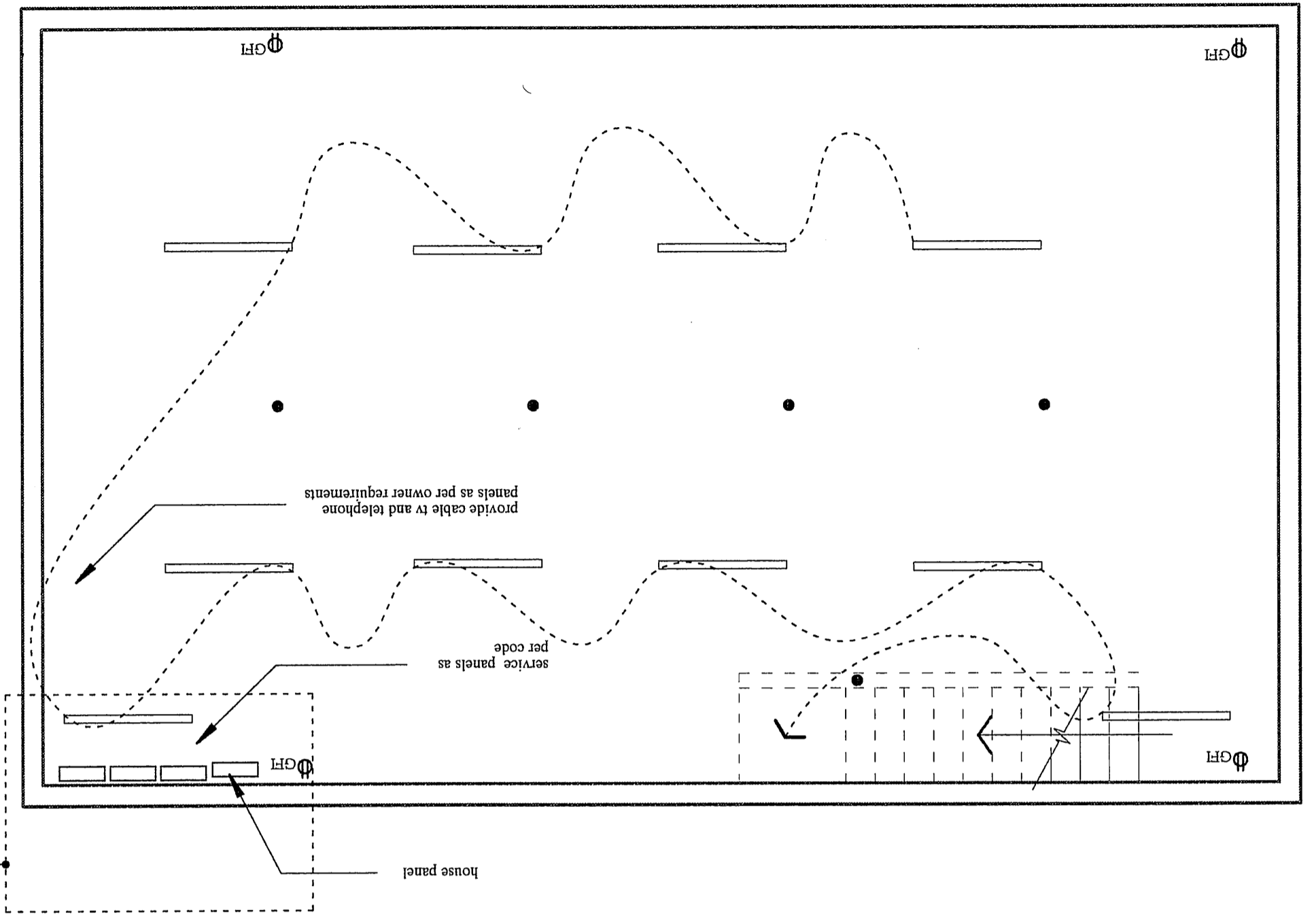
electrical plans  
07 March 2005  
E 1.1

revision: 10/2005  
1/4" = 1'-0"

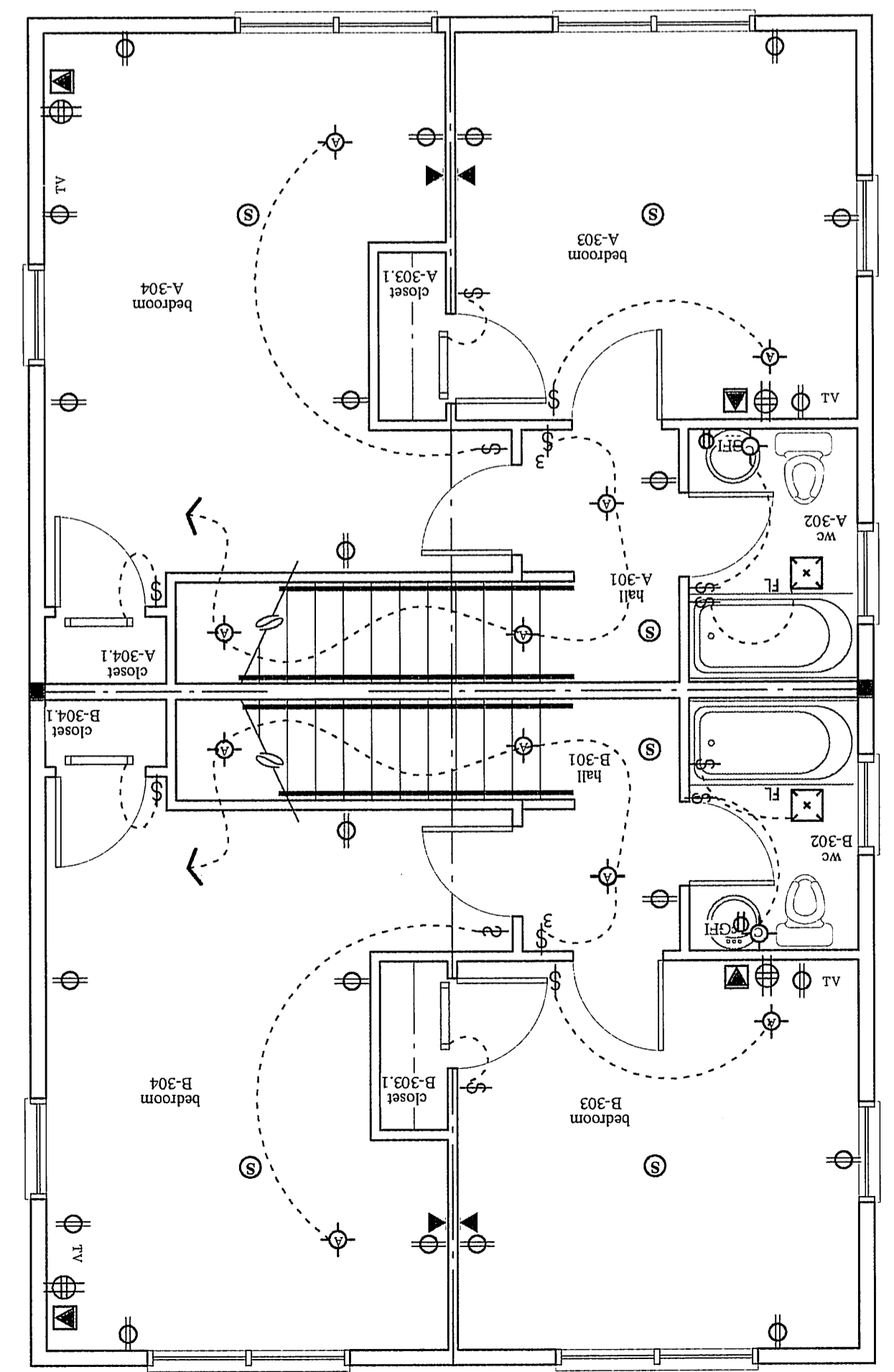
- ELECTRICAL GENERAL NOTES:
1. ALL ELECTRICAL WORK TO COMPLY WITH STATE AND LOCAL CODES.
  2. OWNER/CONTRACTOR TO PROVIDE FIXTURE SCHEDULE.
  3. CONTRACTOR TO COORDINATE WORK WITH OTHER TRADES - MECHANICAL AND PLUMBING.
  4. LOCATION OF SERVICE AND METER BY OWNER.
  5. ALL RECESSED FIXTURES SHALL BE RATED FOR 1 HOUR IN RATED FLOOR. CEILING ASSEMBLY OR BOX IN FIXTURE WITH 5/8 FIRE GYP.

- SMOKE DETECTOR
- FLOOR MOUNTED
- DUPLEX
- BOTTOM SWITCHED
- GFCI
- DEDICATED
- WEATHER PROTECTED
- QUAD
- TV/CABLE/DUPLEX
- DOOR BELL
- SWITCH
- 3-WAY SWITCH
- 3-WAY DIMMER
- DIMMER SWITCH
- TELEPHONE LINES
- MULTIPLE TELEPHONE LINES
- TELEPHONE
- WALL MNTD FLOR. 18"
- 4' FLOR FIXTURE
- FXTURE A RECESSED
- FXTURE B EYE BALL
- FXTURE C SURFACE
- FXTURE D TRACK LIGHTING-8'-0"
- FXTURE E SURFACE
- FXTURE F SURFACE
- FXTURE G SHOWER/BATH
- FXTURE K EXTERIOR RECESSED
- WALL MNTD SCENCE
- WALL MNTD SCENCE EXTERIOR GRADE
- FAN
- FAN/LIGHT COMB
- WALL MOUNTED EX FAN
- W
- ELECTRIC HEATER
- DATA AND VOICE

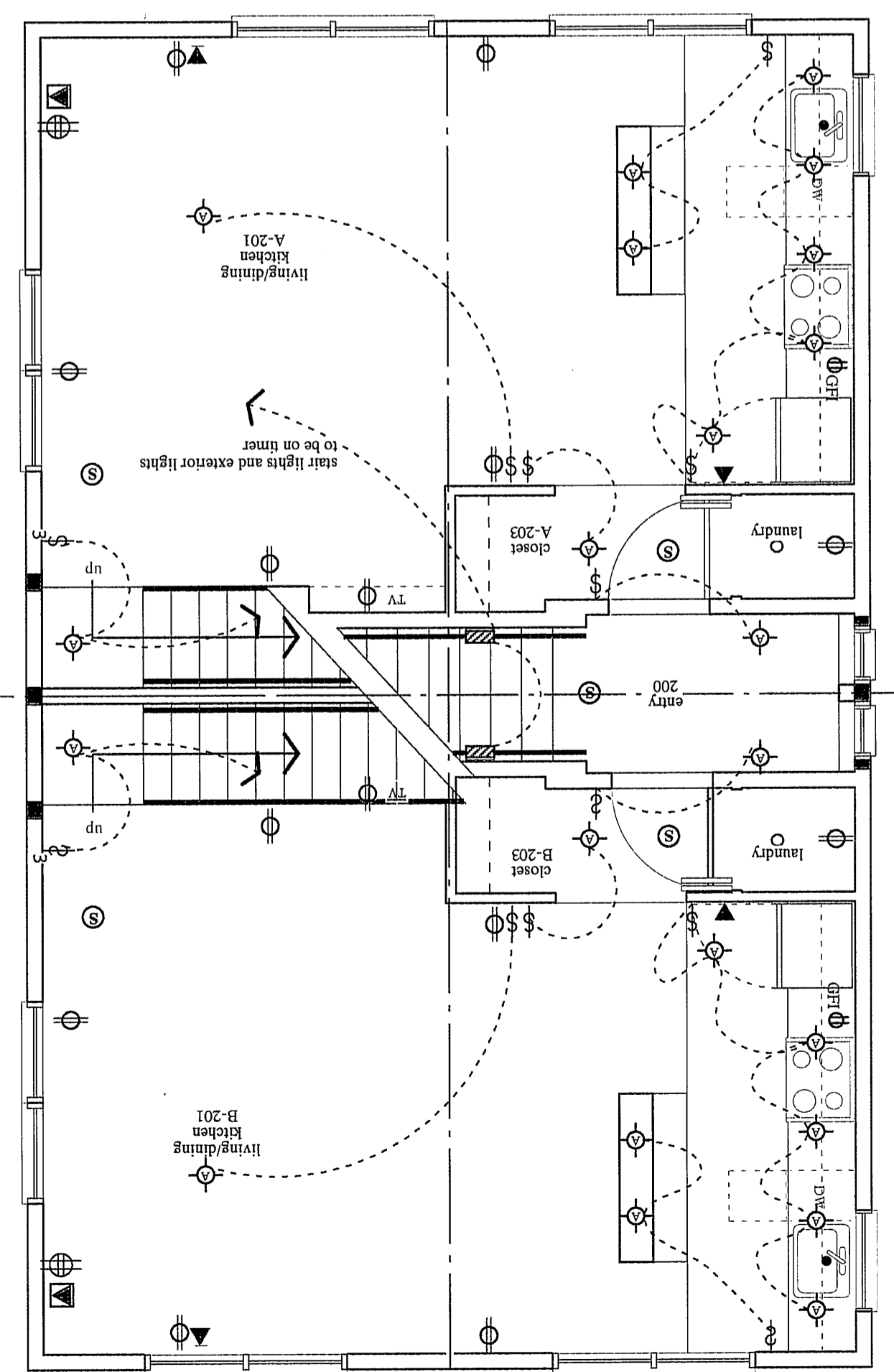
Basement plan



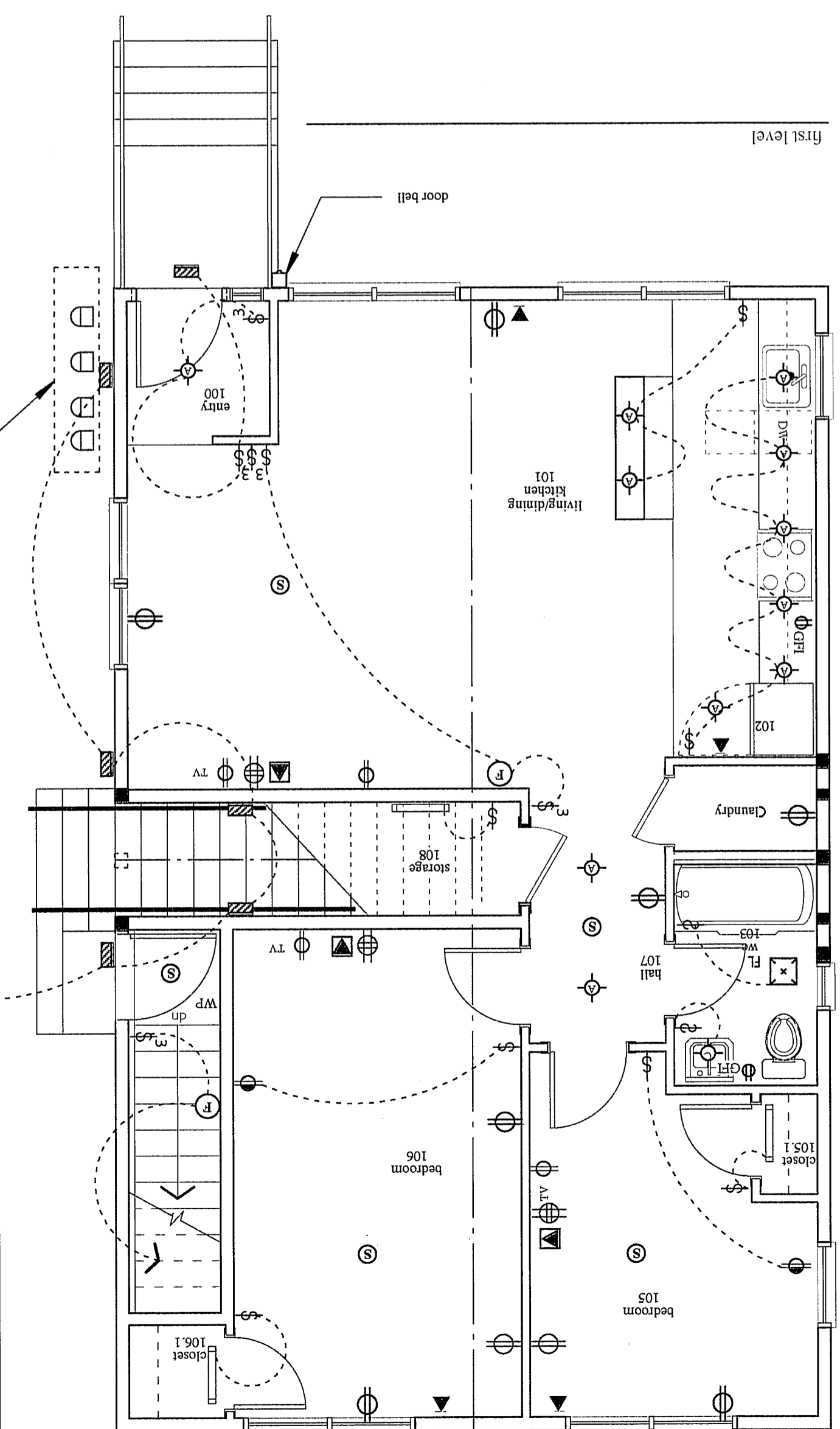
third level



second level



first level



seat lights and exterior lights to be on timer

meters