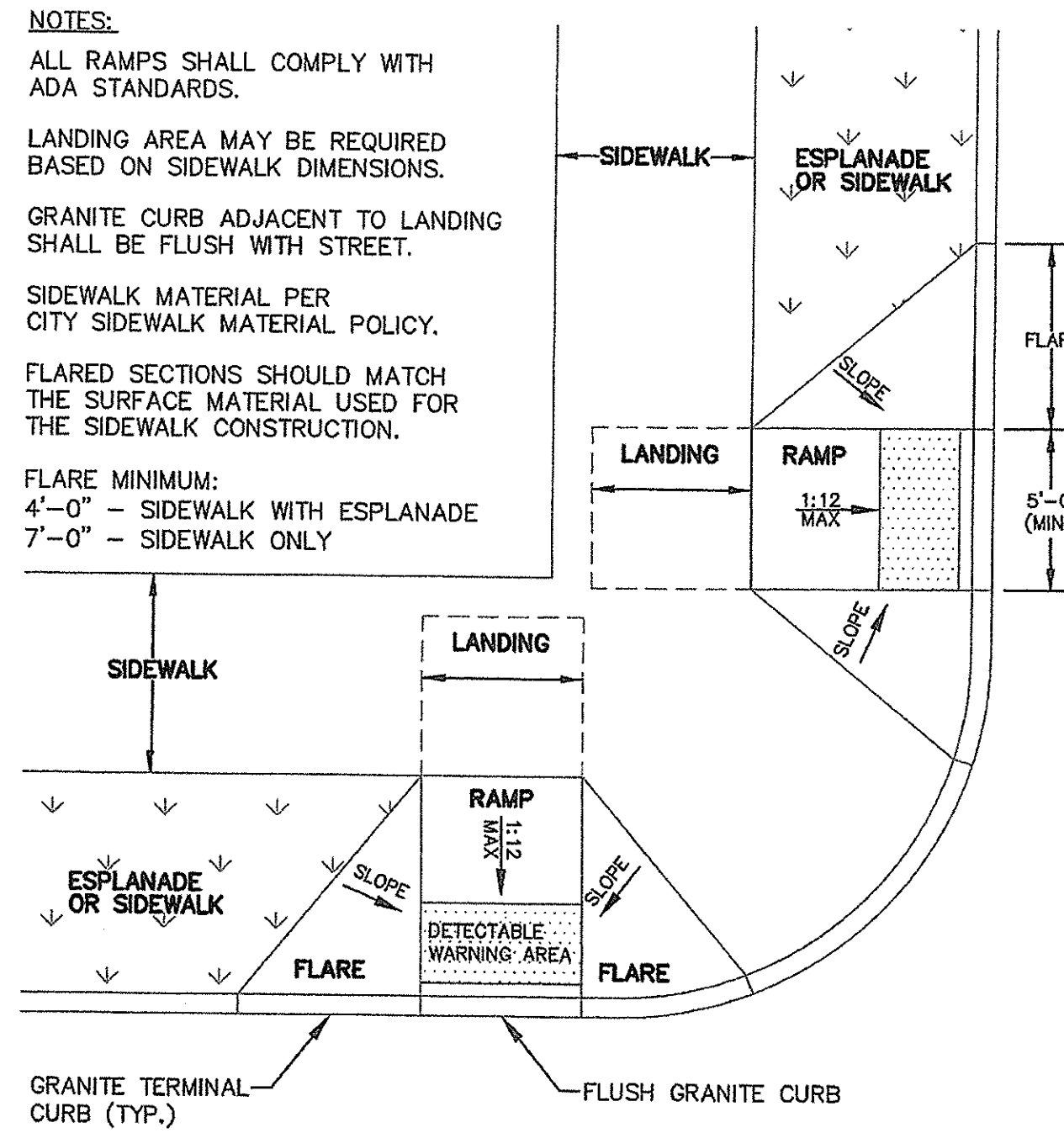
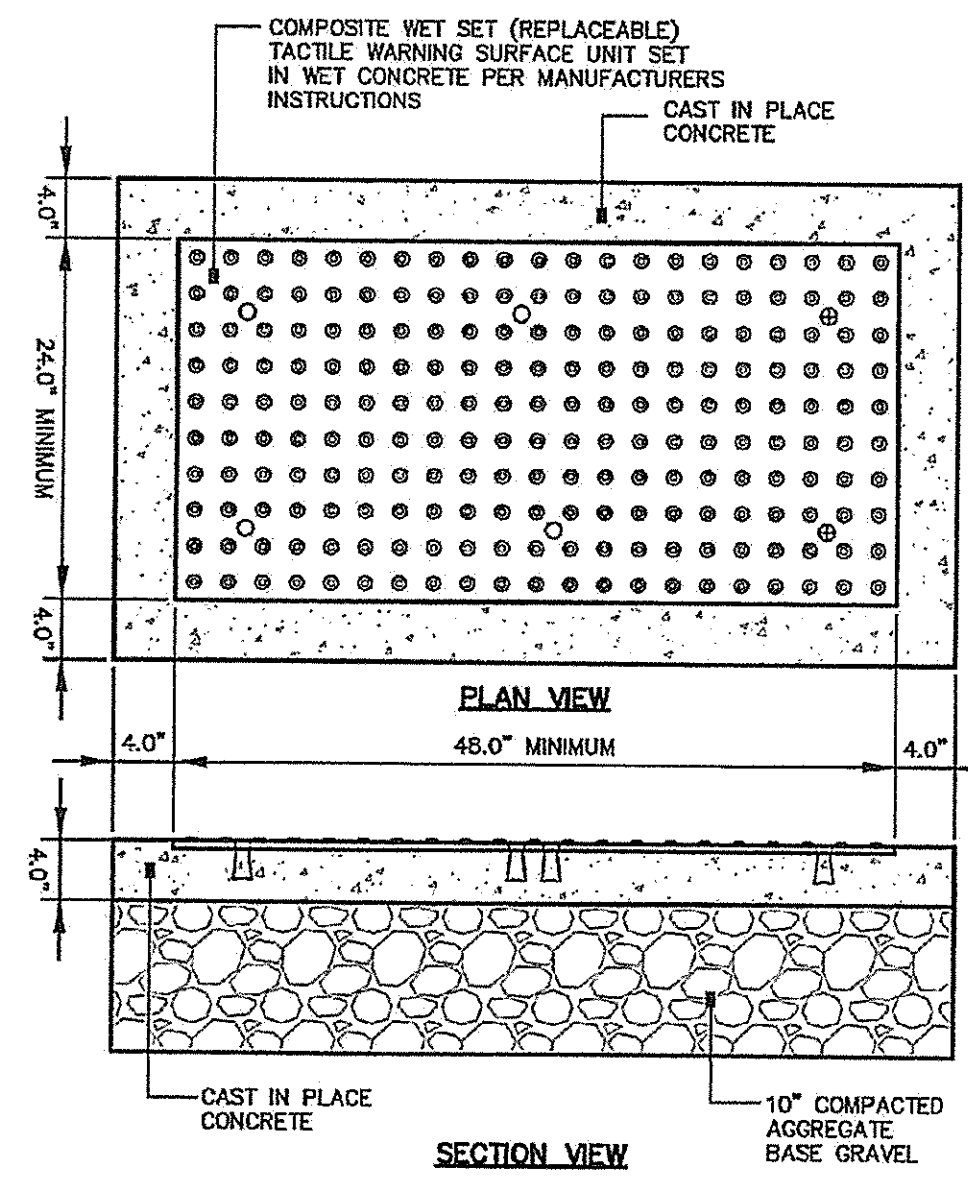


6 PAVEMENT CUTTING & MATCHING SECTION
NOT TO SCALE

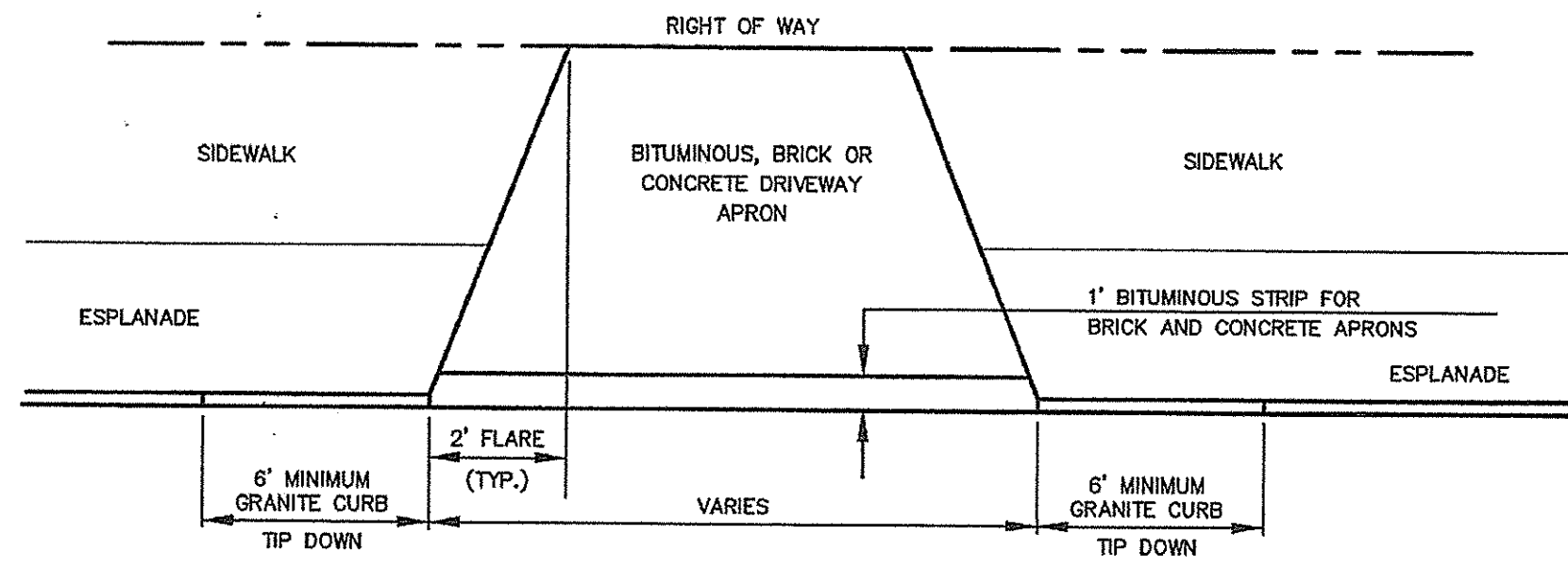


3 PREFERRED SIDEWALK RAMP INTERSECTION (I-6E)
NOT TO SCALE



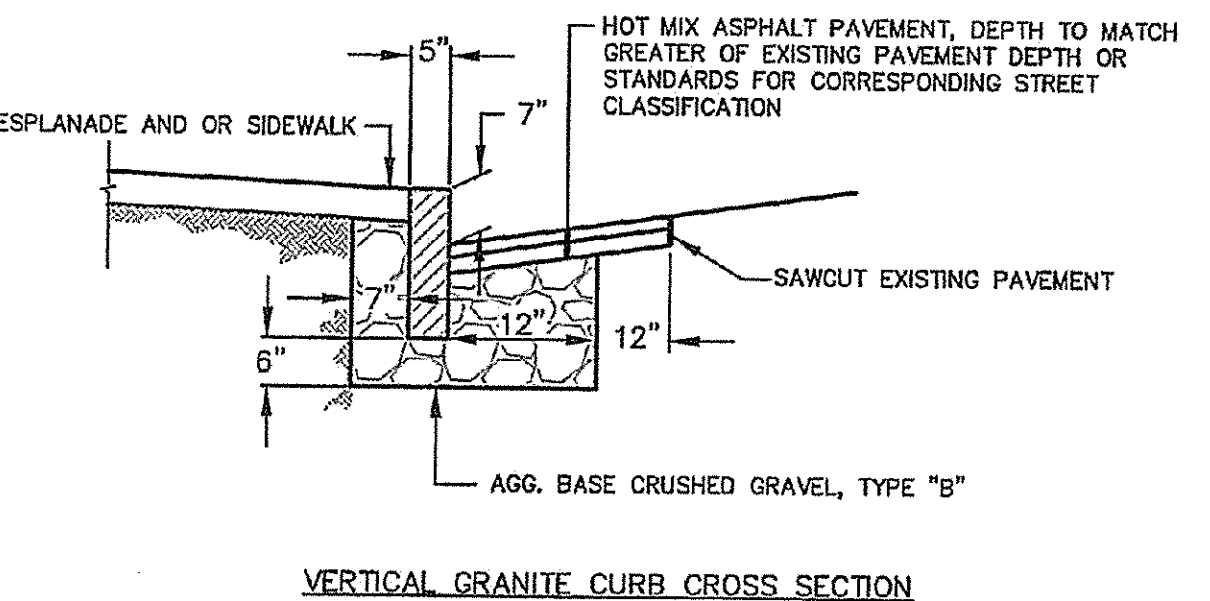
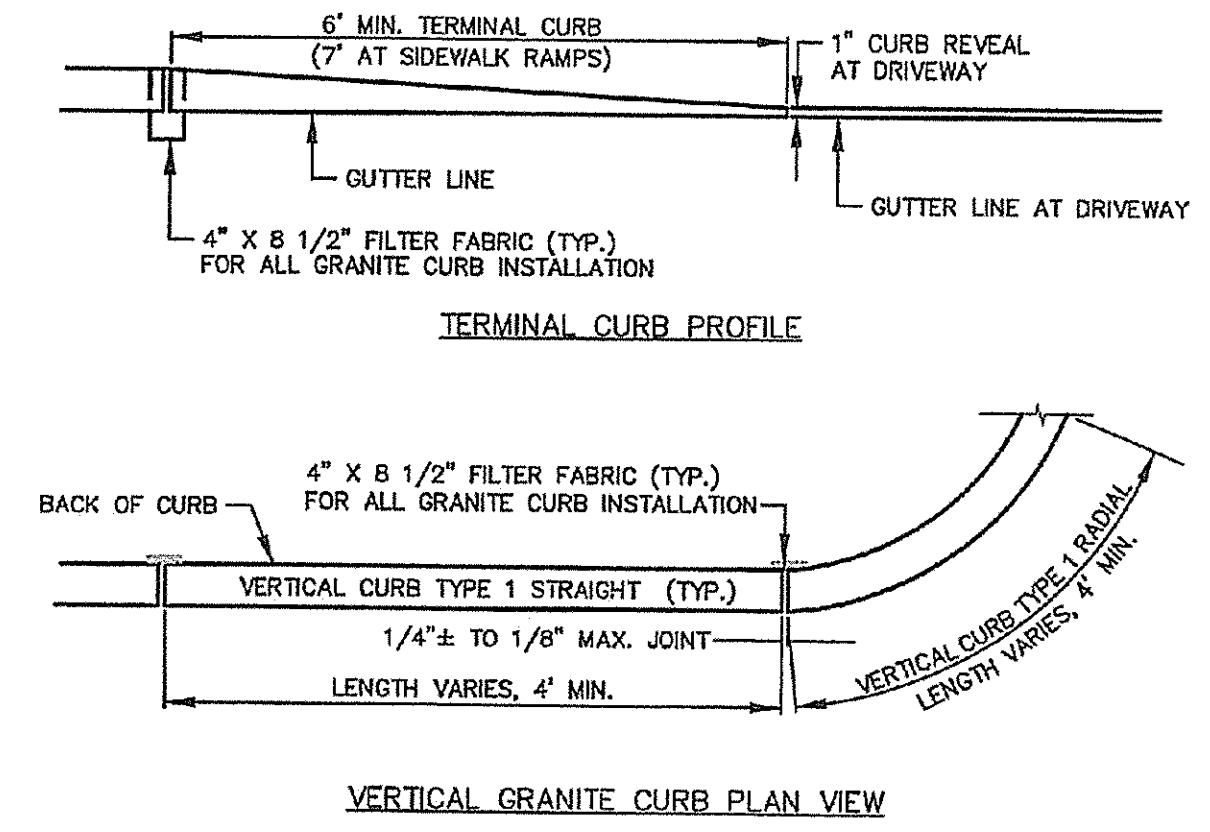
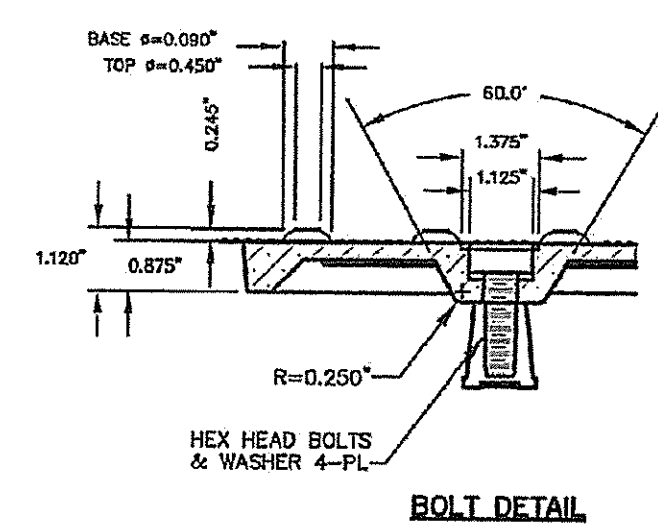
4 SIDEWALK RAMP DETECTABLE WARNING TILE (I-7)
NOT TO SCALE

NOTE:
MATCH GRADE OF EXISTING DRIVEWAY AT R. O. W. LINE, EXCEPT WHEN DIRECTED OTHERWISE BY CITY ENGINEER.



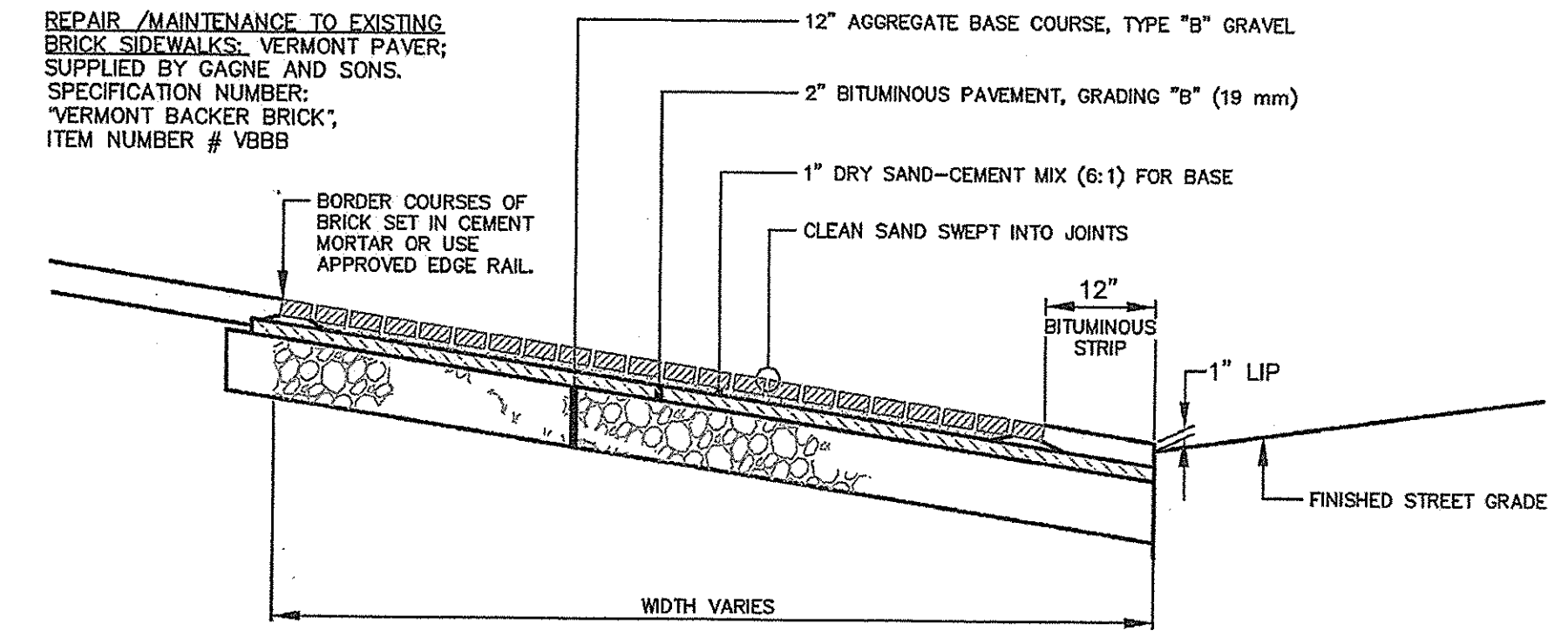
5 DRIVEWAY APRON LAYOUT (I-9)
NOT TO SCALE

- NOTES:**
- COMPOSITE WET SET (REPLACEABLE) TACTILE WARNING SURFACE UNITS SHALL BE AS MANUFACTURED BY ADA SOLUTIONS, INC. (WWW.ADATILE.COM), OR APPROVED EQUAL.
 - CAST IN PLACE CONCRETE SHALL MEET SPECIFICATIONS FOR MDOT CLASS A STRUCTURAL CONCRETE, MINIMUM COMPRESSIVE STRENGTH 4,000 PSI. THE CONCRETE SHALL BE SEALED PRIOR TO SETTING PANELS. THE EXPOSED CONCRETE BORDER SHALL RECEIVE A GROOVED EDGE BETWEEN THE TILE AND CONCRETE, ALONG WITH A UNIFORM BROOM FINISH PERPENDICULAR TO THE FLOW OF PEDESTRIAN TRAFFIC.
 - TRUNCATED DOMES SHALL BE ALIGNED IN ROWS, PARALLEL AND PERPENDICULAR TO THE PREDOMINANT DIRECTION OF TRAVEL. TRUNCATED DOME BRICKS AND GRANITE PAVERS ARE NOT ALLOWED.
 - FOR ALL SIDEWALK RAMPS MADE OF CONCRETE OR ASPHALT, FEDERAL YELLOW COLORED (#33538) TILES SHALL BE USED. FOLLOW MANUFACTURER'S INSTRUCTIONS FOR INSTALLATION.
 - FOR ALL SIDEWALK RAMPS MADE OF BRICK, SEATTLE YELLOW (#23594) COATED COLORED TILES SHALL BE USED.



1 VERTICAL GRANITE CURB INSTALLATION IN EXISTING STREET (I-17)
NOT TO SCALE

BRICKS TO BE USED:
NEW CONSTRUCTION:
4"x8" PINE HALL PATHWAY PAVER BRICK; MFG. BY PINE HALL BRICK CO., MADISON, NORTH CAROLINA. LACHANCE ITEM # 193623, PINE HALL PATHWAY PAVER BRICK.



2 BRICK DRIVEWAY APRON WITH BITUMINOUS BASE (I-11)
NOT TO SCALE

1	01/02/14	CHANGED DRAWING NUMBER
REV.	DATE	DESCRIPTION

118 CONDOMINIUMS, LLC
118 CONGRESS STREET, PORTLAND ME

118 on MUNJOY HILL
118 CONGRESS STREET, PORTLAND, ME

PINKHAM & GREER

CONSULTING ENGINEERS
28 VANDER VEKKE
PORTLAND, MAINE

DETAILS

SCALE: AS SHOWN DRN BY: JDC
DATE: NOVEMBER 13, 2013 DESG BY: TSG
PROJECT: 13143 CHK BY: TSG

THOMAS & GREER
No. 4206
LICENSED PROFESSIONAL ENGINEER

1/2/14