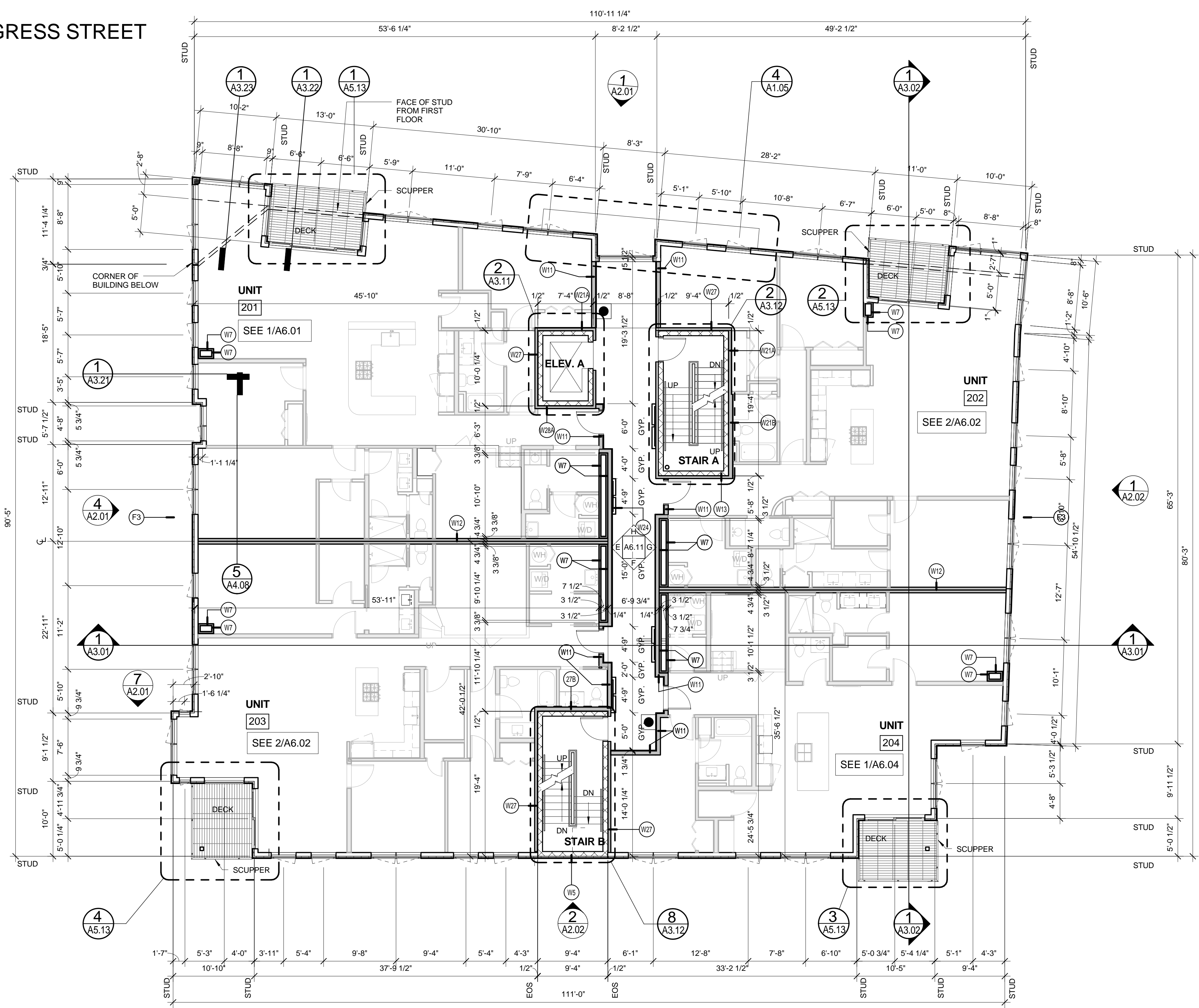
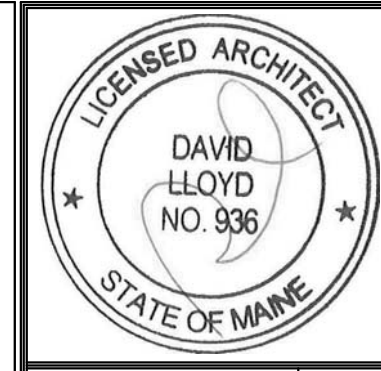


CONGRESS STREET

ST. LAWRENCE STREET



1 | SECOND FLOOR PLAN
 1/8" = 1'-0"
 0 2' 4' 8' 16'



Prepared For:
118 on Munjoy Hill, LLC
 118 CONGRESS STREET
 PORTLAND, ME 04101

Consultant:
ARCHETYPE architects
 48 Union Wharf Portland, Maine 04101
 (207) 772-6022 Fax (207) 772-4056

Project:
118 ON MUNJOY HILL
 118 CONGRESS STREET
 PORTLAND, MAINE

Revisions:
 Date: **11 MAR 2014**
 Scale: **1/8" = 1'-0"**

SECOND FLOOR PLAN
A1.02