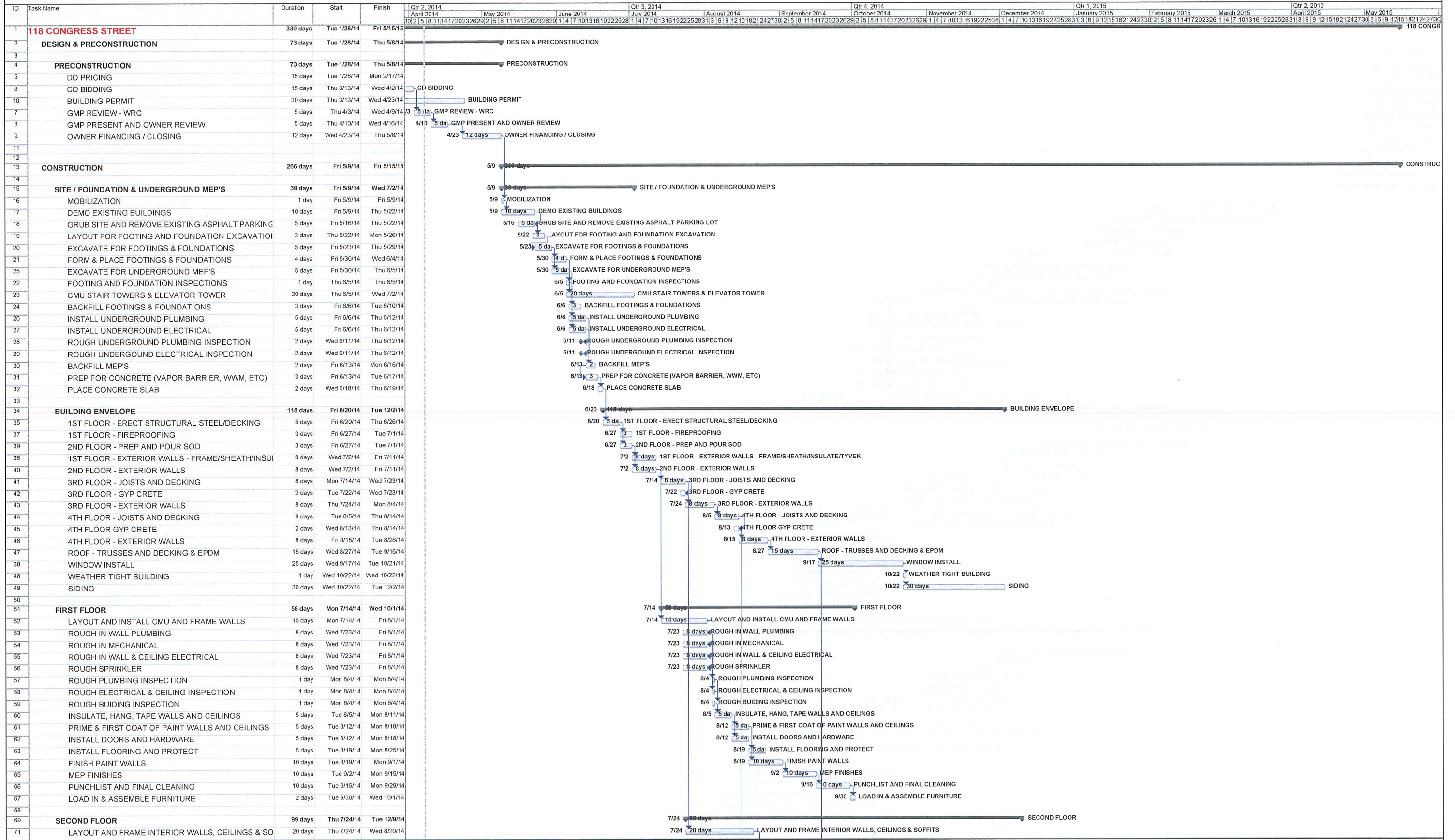


Project Schedule



START DATE: Tue 1/28/14
 FINISH DATE: Fri 5/15/15
 DURATION: 339 days

Wright-Ryan Construction

Task		Progress		Summary		Rolled Up Critical Task		Rolled Up Progress		External Tasks		Group By Summary	
Critical Task		Milestone		Rolled Up Task		Rolled Up Milestone		Split		Project Summary		Deadline	

Project Schedule

ID	Task Name	Start	Finish	Duration
72	ROUGH IN WALL PLUMBING	Thu 8/20/14	Wed 8/20/14	5 days
73	ROUGH IN MECHANICAL	Thu 8/14/14	Wed 8/20/14	5 days
74	ROUGH IN WALL & CEILING ELECTRICAL	Wed 8/20/14	Wed 8/20/14	5 days
75	ROUGH SPRINKLER	Thu 8/14/14	Wed 8/20/14	5 days
76	ROUGH PLUMBING INSPECTION	Thu 8/21/14	Thu 8/21/14	1 day
77	ROUGH ELECTRICAL & CEILING INSPECTION	Thu 8/21/14	Thu 8/21/14	1 day
78	ROUGH BUILDING INSPECTION	Thu 8/21/14	Thu 8/21/14	1 day
79	INSULATE, HANG, TAPE WALLS AND CEILINGS	Thu 8/21/14	Thu 10/2/14	30 days
80	PRIME & FIRST COAT OF PAINT WALLS AND CEILINGS	Thu 8/12/14	Thu 10/9/14	20 days
81	INSTALL DOORS AND HARDWARE	Thu 10/9/14	Thu 10/9/14	5 days
82	INSTALL FLOORING AND PROTECT	Wed 10/8/14	Thu 10/9/14	5 days
83	INSTALL MILLWORK	Mon 10/31/14	Fri 11/7/14	20 days
84	FINISH PAINT	Mon 11/3/14	Fri 11/4/14	10 days
85	MEP FINISHES	Mon 11/3/14	Fri 11/21/14	10 days
86	PUNCHLIST AND FINAL CLEANING	Mon 11/24/14	Fri 12/5/14	10 days
87	LOAD IN & ASSEMBLE FURNITURE	Mon 12/8/14	Tue 12/9/14	2 days
88	THIRD FLOOR	Fri 8/15/14	Mon 1/12/15	107 days
89	LAYOUT AND FRAME INTERIOR WALLS, CEILINGS & SO	Thu 9/11/14	Thu 9/11/14	20 days
90	ROUGH IN WALL PLUMBING	Thu 9/11/14	Thu 9/11/14	5 days
91	ROUGH IN MECHANICAL	Thu 9/11/14	Thu 9/11/14	5 days
92	ROUGH IN WALL & CEILING ELECTRICAL	Thu 9/11/14	Thu 9/11/14	5 days
93	ROUGH SPRINKLER	Thu 9/15/14	Thu 9/11/14	5 days
94	ROUGH PLUMBING INSPECTION	Fri 9/12/14	Fri 9/12/14	1 day
95	ROUGH ELECTRICAL & CEILING INSPECTION	Fri 9/12/14	Fri 9/12/14	1 day
96	ROUGH BUILDING INSPECTION	Fri 9/12/14	Fri 9/12/14	1 day
97	INSULATE, HANG, TAPE WALLS AND CEILINGS	Mon 9/15/14	Fri 10/24/14	30 days
98	PRIME & FIRST COAT OF PAINT WALLS AND CEILINGS	Mon 10/27/14	Fri 10/31/14	5 days
99	INSTALL DOORS AND HARDWARE	Mon 11/03/14	Fri 11/03/14	8 days
100	INSTALL FLOORING AND PROTECT	Mon 11/03/14	Mon 11/03/14	8 days
101	INSTALL MILLWORK	Thu 12/11/14	Thu 12/11/14	25 days
102	FINISH PAINT	Thu 12/5/14	Thu 12/18/14	10 days
103	MEP FINISHES	Thu 12/25/14	Thu 12/25/14	10 days
104	PUNCHLIST AND FINAL CLEANING	Fri 12/26/14	Thu 1/8/15	10 days
105	LOAD IN & ASSEMBLE FURNITURE	Fri 1/9/15	Mon 1/12/15	2 days
106	FOURTH FLOOR	Wed 9/17/14	Mon 2/9/15	104 days
107	LAYOUT AND FRAME INTERIOR WALLS, CEILINGS & SO	Tue 10/14/14	Tue 10/14/14	20 days
108	ROUGH IN WALL PLUMBING	Wed 10/8/14	Thu 10/14/14	5 days
109	ROUGH IN MECHANICAL	Wed 10/8/14	Thu 10/14/14	5 days
110	ROUGH IN WALL & CEILING ELECTRICAL	Wed 10/8/14	Thu 10/14/14	5 days
111	ROUGH SPRINKLER	Wed 10/8/14	Thu 10/14/14	5 days
112	ROUGH PLUMBING INSPECTION	Wed 10/15/14	Wed 10/15/14	1 day
113	ROUGH ELECTRICAL & CEILING INSPECTION	Wed 10/15/14	Wed 10/15/14	1 day
114	ROUGH BUILDING INSPECTION	Wed 10/15/14	Wed 10/15/14	1 day
115	ROUGH BUILDING INSPECTION	Wed 10/15/14	Wed 10/15/14	1 day
116	INSULATE, HANG, TAPE WALLS AND CEILINGS	Thu 10/6/14	Wed 11/26/14	30 days
117	PRIME & FIRST COAT OF PAINT WALLS AND CEILINGS	Thu 12/3/14	Wed 12/3/14	20 days
118	INSTALL DOORS AND HARDWARE	Thu 11/27/14	Wed 12/3/14	5 days
119	INSTALL FLOORING AND PROTECT	Thu 12/11/14	Thu 12/11/14	8 days
120	INSTALL MILLWORK	Thu 12/22/14	Thu 12/22/14	10 days
121	FINISH PAINT	Fri 1/9/15	Thu 1/22/15	10 days
122	MEP FINISHES	Fri 1/6/15	Thu 1/29/15	10 days
123	PUNCHLIST AND FINAL CLEANING	Thu 2/3/15	Thu 2/3/15	10 days
124	LOAD IN & ASSEMBLE FURNITURE	Fri 2/6/15	Mon 2/9/15	2 days
125	LANDSCAPE & HARDSCAPE	Fri 5/15/15	Fri 5/15/15	15 days
126	INSTALL CURBING	Mon 4/27/15	Fri 4/28/15	2 days
127	PREP SUBGRADE FOR SIDEWALKS	Wed 4/29/15	Fri 5/1/15	3 days
128	PREP & PLACE CONCRETE SIDEWALKS	Wed 5/6/15	Wed 5/6/15	3 days
129	INSTALL TREES	Thu 5/7/15	Fri 5/8/15	2 days
130	LOAM PLANTING BEDS	Thu 5/7/15	Fri 5/8/15	2 days
131	INSTALL PLANTINGS	Thu 5/7/15	Fri 5/8/15	2 days
132	PREP SUBGRADE FOR ASPHALT	Thu 5/7/15	Fri 5/8/15	3 days
133	SEED/SOD GRASS AREAS	Mon 5/11/15	Tue 5/12/15	2 days
134	STAKE TREES	Mon 5/11/15	Mon 5/11/15	1 day
135	PLACE ASPHALT ROADWAYS & PARKING AREAS	Tue 5/12/15	Thu 5/14/15	3 days
136	ASPHALT STRIPING	Fri 5/15/15	Fri 5/15/15	1 day
137	ASPHALT ST	Fri 5/15/15	Fri 5/15/15	1 day

Wright-Ryan Construction

START DATE: Tue 1/28/14
FINISH DATE: Fri 5/15/15
DURATION: 339 days

Task Milestone Progress Summary

Task: Summary

Milestone: Milestone

Progress: Progress

Summary: Summary

Split: Split

Rollup Progress: Rollup Progress

Rollup Milestone: Rollup Milestone

External Tasks: External Tasks

Group By Summary: Group By Summary

Deadline: Deadline

- 4/27 LANDSCAPE
- 4/29 PREP SUBGRADE FOR
- 5/4 PREP & PLACE CO
- 5/7 INSTALL TREES
- 5/7 LOAM PLANTING
- 5/7 INSTALL PLANTING
- 5/7 PREP SUBGRA
- 5/11 SEED/SOD GR
- 5/11 STAKE TREES
- 5/12 PLACE ASPH
- 5/15 ASPHALT ST

