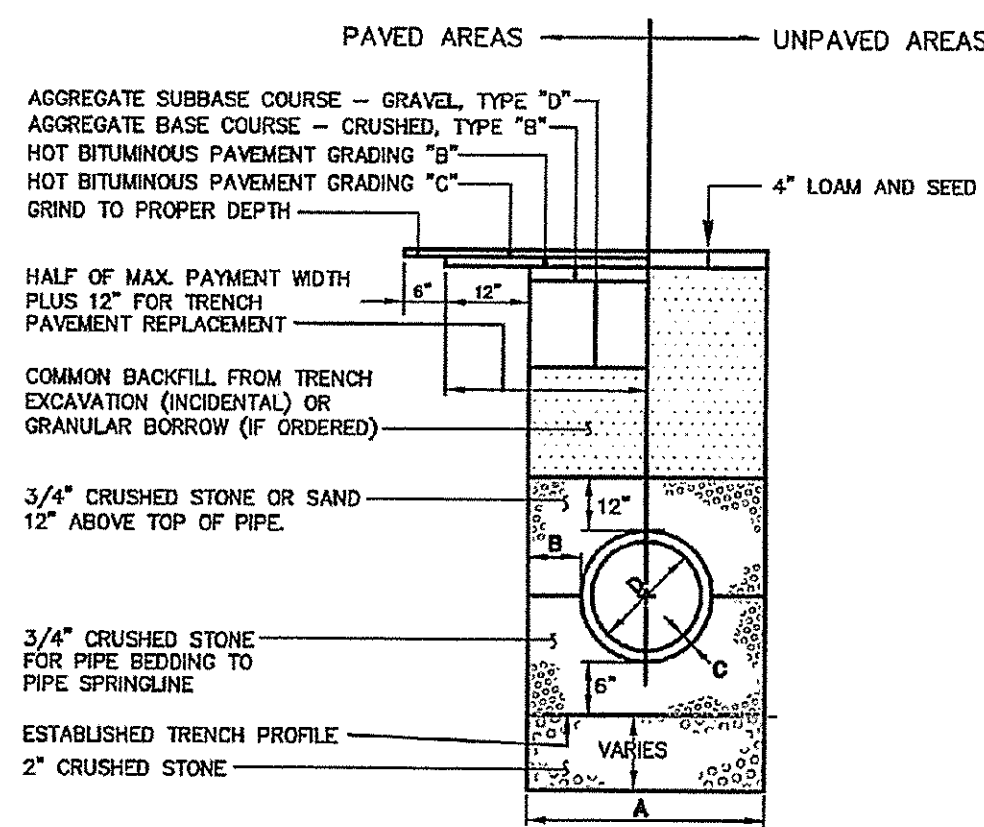


NOTES:
DEPTH OF BITUMINOUS PAVEMENT AND AGGREGATE COURSES SHALL BE DETERMINED BY STREET CLASSIFICATION.
ANY ALTERNATE TRENCHING OR PAYMENT METHODS SHALL BE APPROVED IN ADVANCE BY THE CITY OF PORTLAND, DEPARTMENT OF PUBLIC SERVICES.



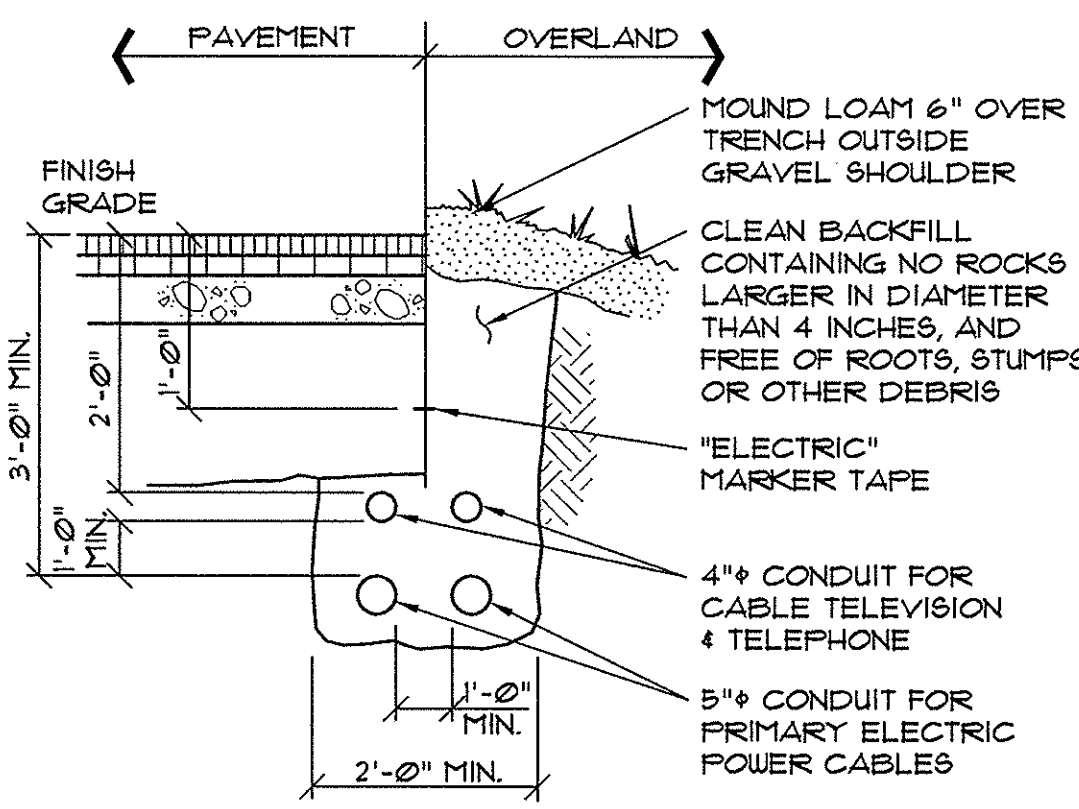
NOTES:

- ALTERNATIVE CONSTRUCTION METHODS OR PAYMENT METHODS SHALL BE APPROVED IN ADVANCE BY THE CITY. IN PAVED AREAS, DEPTHS OF GRAVEL AND HOT MIX ASPHALT PAVEMENT SHALL MATCH THE GREATER OF EXISTING CONDITIONS OR THE REQUIREMENTS FOR THE CORRESPONDING STREET CLASSIFICATION.
- DIMENSION B SHALL BE SUFFICIENT TO ALLOW CRUSHED STONE BEDDING TO BE PLACED AND COMPACTED UNDER THE HAUNCHES OF THE PIPE, BUT IN ALL CASES, DIMENSION B SHALL BE AT LEAST 9".
- DIMENSION A IS THE MAXIMUM WIDTH ALLOWED FOR CALCULATING PAY QUANTITIES UNDER GRANULAR BORROW, CRUSHED STONE, STRUCTURAL EARTH EXCAVATION, AND STRUCTURAL ROCK EXCAVATION. DIMENSION A SHALL BE BASED ON PIPE DIAMETER D, AS SET FORTH IN THE FOLLOWING TABLE.

PIPE DIAMETER, D (INCHES)	MAX. TRENCH WIDTH, A (FEET)
4	4.0
6	4.0
8	4.0
10	4.0
12	5.0
15	5.0
18	5.0
21	5.0
24	6.0
27	6.0
30	6.0
36	6.0
42	7.0
48	7.0

4 TYPICAL PIPE TRENCH INSTALLATION (11-12)

NOT TO SCALE



NOTES:

- INSTALLATION SHALL NOT ALLOW INTER-TWILING OF CABLES.
- DIRECT BURY CABLES EXCEPT UNDER PAVED AREAS. PROVIDE SCH. 40 PVC CONDUIT UNDER PAVED AREAS, EXTEND CONDUIT 5'-0" BEYOND EDGE OF PAVEMENT.

3 CABLE TRENCH SECTION

NOT TO SCALE

2 CONCRETE THRUSTBLOCK PLACEMENT(11-18)

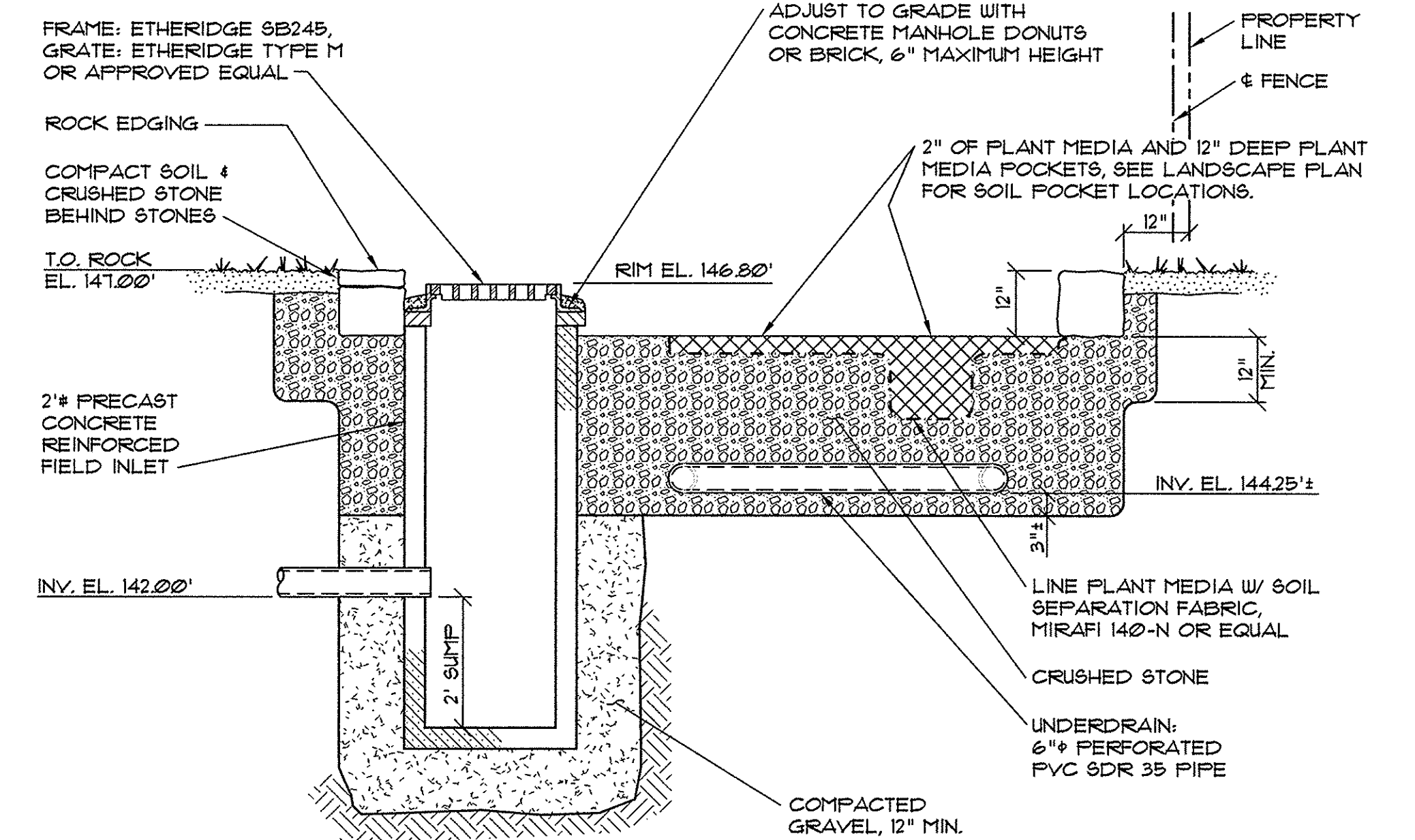
NOT TO SCALE

THRUST/RETAINER SCHEDULE

1/4 BEND (90°)	USE FOUR(4)-IN-PLATE THRUST BLOCK w/RETAINERS
1/8 BEND (45°)	THRUST BLOCK w/RETAINERS
1/16 BEND (22 1/2°)	THRUST BLOCK
1/32 BEND (11 1/4°)	THRUST BLOCK

POLYETHYLENE ENCASUREMENT GENERAL SPECIFICATIONS

- TUBE TYPE POLYETHYLENE ENCASUREMENT SHALL BE INSTALLED ON ALL DUCTILE IRON PIPE AND FITTINGS IN ACCORDANCE WITH AWWA STANDARD C108 - LATEST REVISION, METHOD A.
- POLYETHYLENE ENCASUREMENT SHALL BE EITHER LINEAR LOW-DENSITY POLYETHYLENE (LLDPE) FILM WITH A MINIMUM THICKNESS OF 8-MIL OR HIGH-DENSITY, CROSS-LAMINATED POLYETHYLENE (HDCLPE) FILM WITH A MINIMUM THICKNESS OF 4-MIL.
- CIRCUMFERENTIAL WRAPS OF TAPE OR PLASTIC TIE STRAPS SHALL BE PLACED AT 2-FT. INTERVALS ALONG THE BARREL OF THE PIPE.
- THE POLYETHYLENE ENCASUREMENT SHALL PREVENT CONTACT BETWEEN THE PIPE AND THE SURROUNDING BACKFILL AND BEDDING MATERIAL BUT IS NOT INTENDED TO BE A COMPLETELY AIRTIGHT OR WATERTIGHT ENCLOSURE. ALL LUMPS OF CLAY, MUD, CINDERS, AND SO FORTH, ON THE PIPE SURFACE SHALL BE REMOVED PRIOR TO INSTALLATION OF THE POLYETHYLENE ENCASUREMENT. DURING INSTALLATION, CARE SHALL BE EXERCISED TO PREVENT SOIL OR EMBANKMENT MATERIAL FROM BECOMING TRAPPED BETWEEN THE PIPE AND THE POLYETHYLENE.
- THE POLYETHYLENE FILM SHALL BE FITTED TO THE CONTOUR OF THE PIPE TO EFFECT A SNUG, BUT NOT TIGHT, ENCASUREMENT WITH MINIMUM SPACE BETWEEN THE POLYETHYLENE AND THE PIPE. SUFFICIENT SLACK SHALL BE PROVIDED IN CONTOURING TO PREVENT STRETCHING THE POLYETHYLENE WHERE IT BRIDGES IRREGULAR SURFACES, SUCH AS BELL-SPIGOT INTERFACES, BOLTED JOINTS, OR FITTINGS, AND TO PREVENT DAMAGE TO THE POLYETHYLENE DUE TO BACKFILLING OPERATIONS, OVERLAPS AND ENDS SHALL BE SECURED WITH ADHESIVE TAPE, STRING, PLASTIC TIE STRAPS, OR ANY OTHER MATERIAL CAPABLE OF HOLDING THE POLYETHYLENE ENCASUREMENT IN PLACE UNTIL BACKFILLING OPERATIONS ARE COMPLETE.
- THREE LAYERS OF POLYETHYLENE ADHESIVE TAPE SHALL BE WRAPPED AROUND ANY POLYURAFIPIPPED PIPE WHERE A TAPPING MACHINE WILL BE PLACED. ALL COPPER SERVICES CONNECTED TO A PIPE WRAPPED IN POLYETHYLENE ENCASUREMENT SHALL BE WRAPPED WITHIN THREE FEET OF THE PIPE.

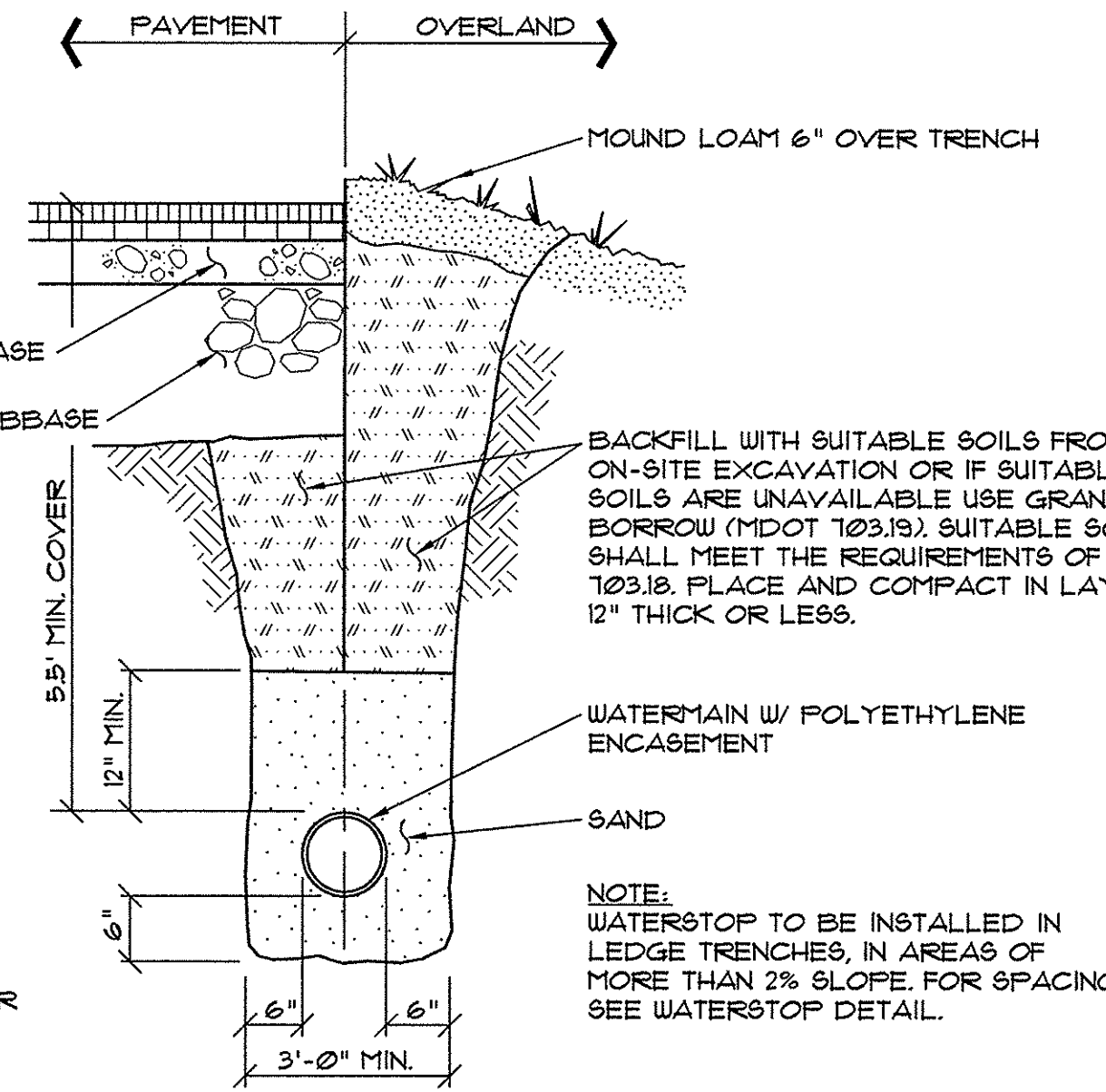


5 FIELD INLET DETAIL AT RAIN GARDEN

NOT TO SCALE

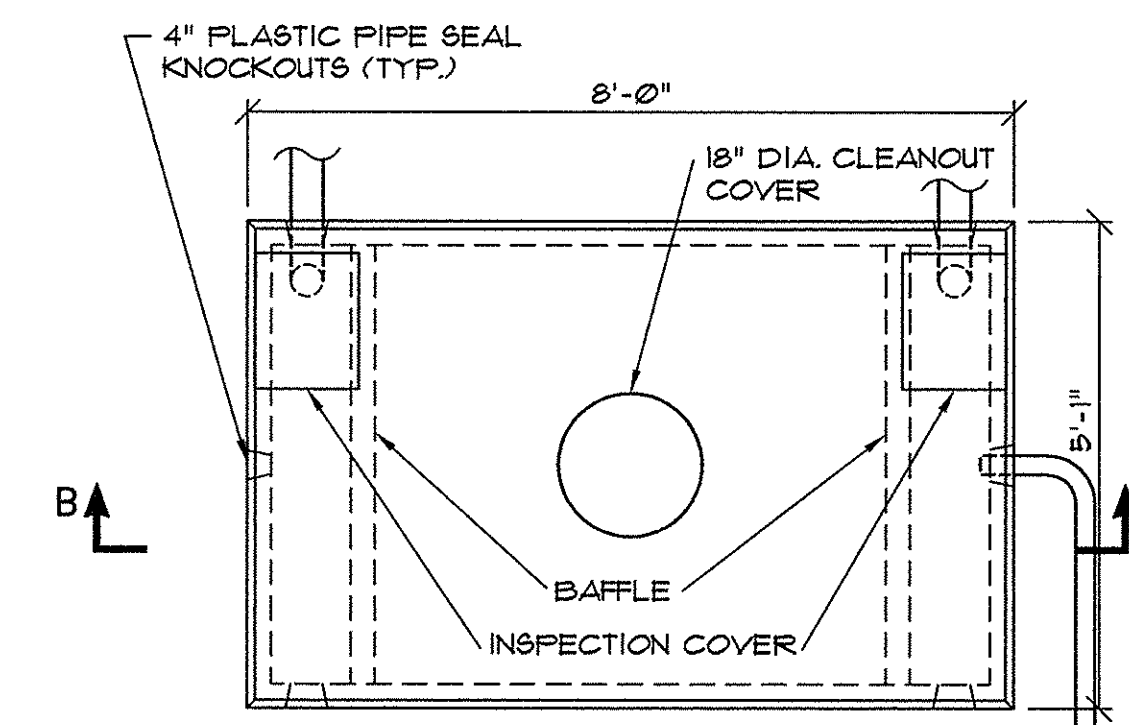
7 GAS PIPING TRENCH SECTION

NOT TO SCALE



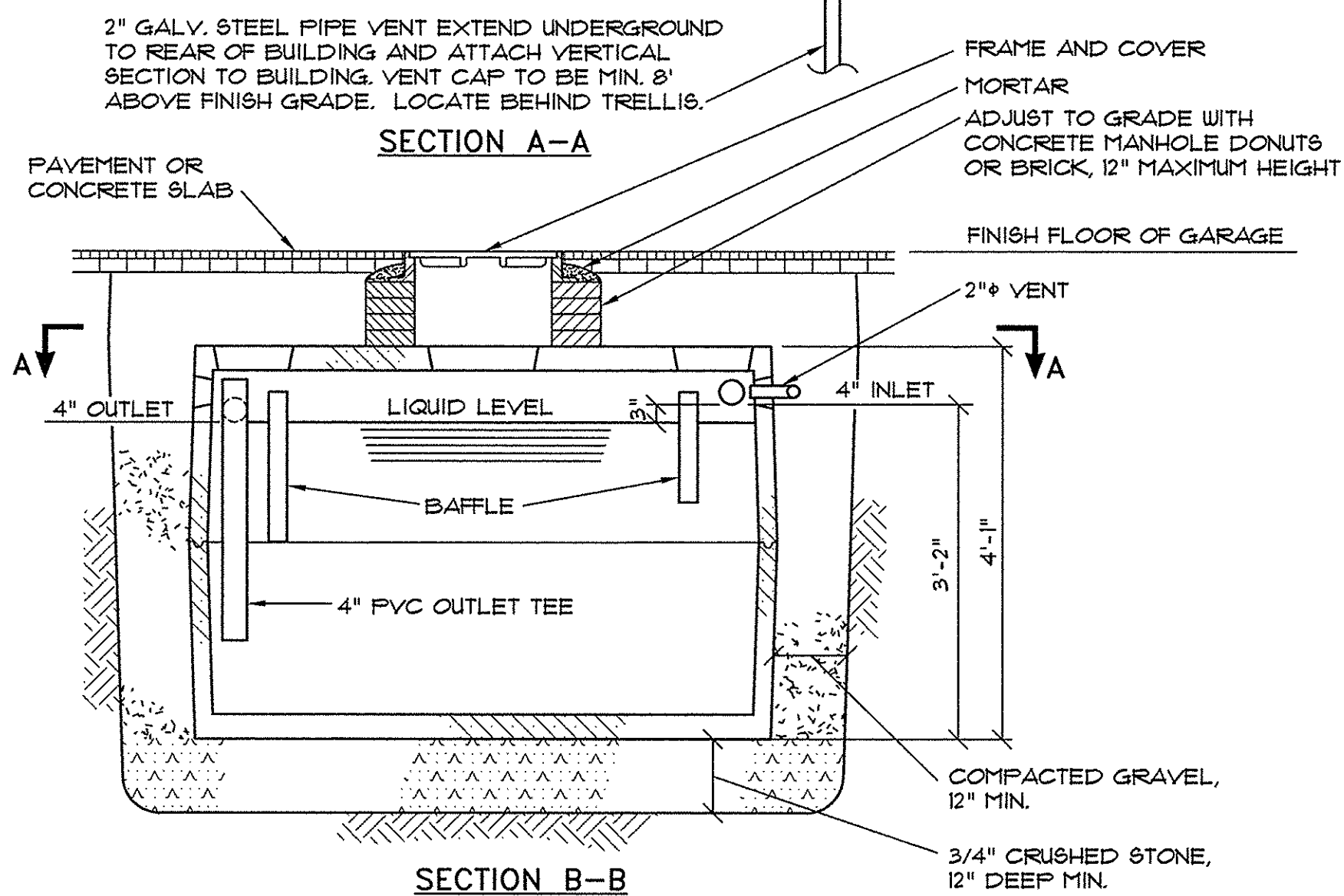
6 TYPICAL WATER MAIN SECTION

NOT TO SCALE



NOTES:

- OIL/GRIT SEPARATOR: SUPERIOR CONCRETE 150 GAL. GREASE TRAP, HEAVY DUTY MODEL, W/ HEAVY DUTY SEPTIC TANK TOP.
- FRAME & SOLID COVER: ETHERIDGE E2455 OR APPROVED EQUAL.
- KEYED JOINTS IN TANK TO BE SEALED WITH BUTYL RUBBER.
- EXCAVATION MUST BE AT LEAST 12" WIDER AND LONGER THAN TANK SIZE.

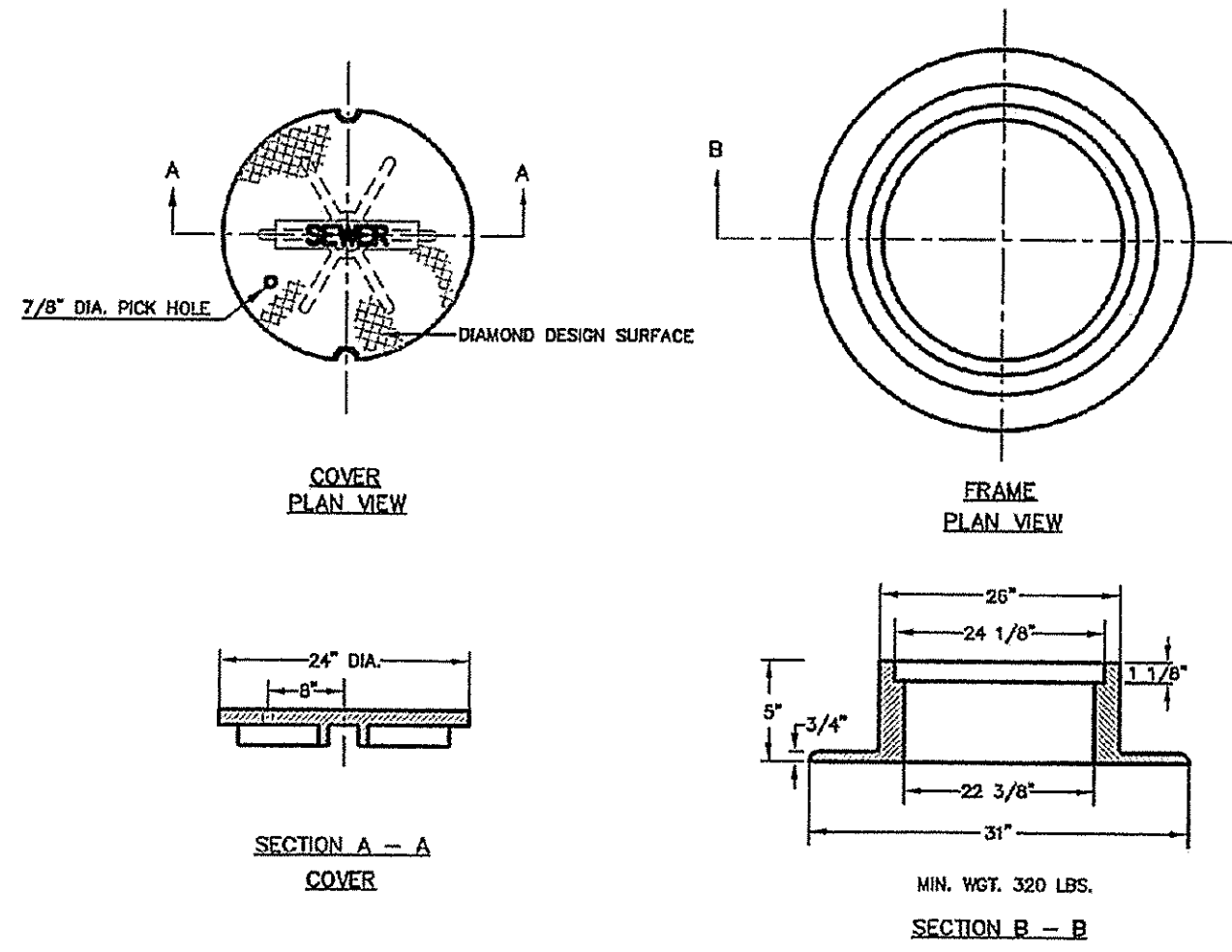


10 PRECAST CONCRETE OIL/GRIT SEPARATOR DETAILS

NOT TO SCALE

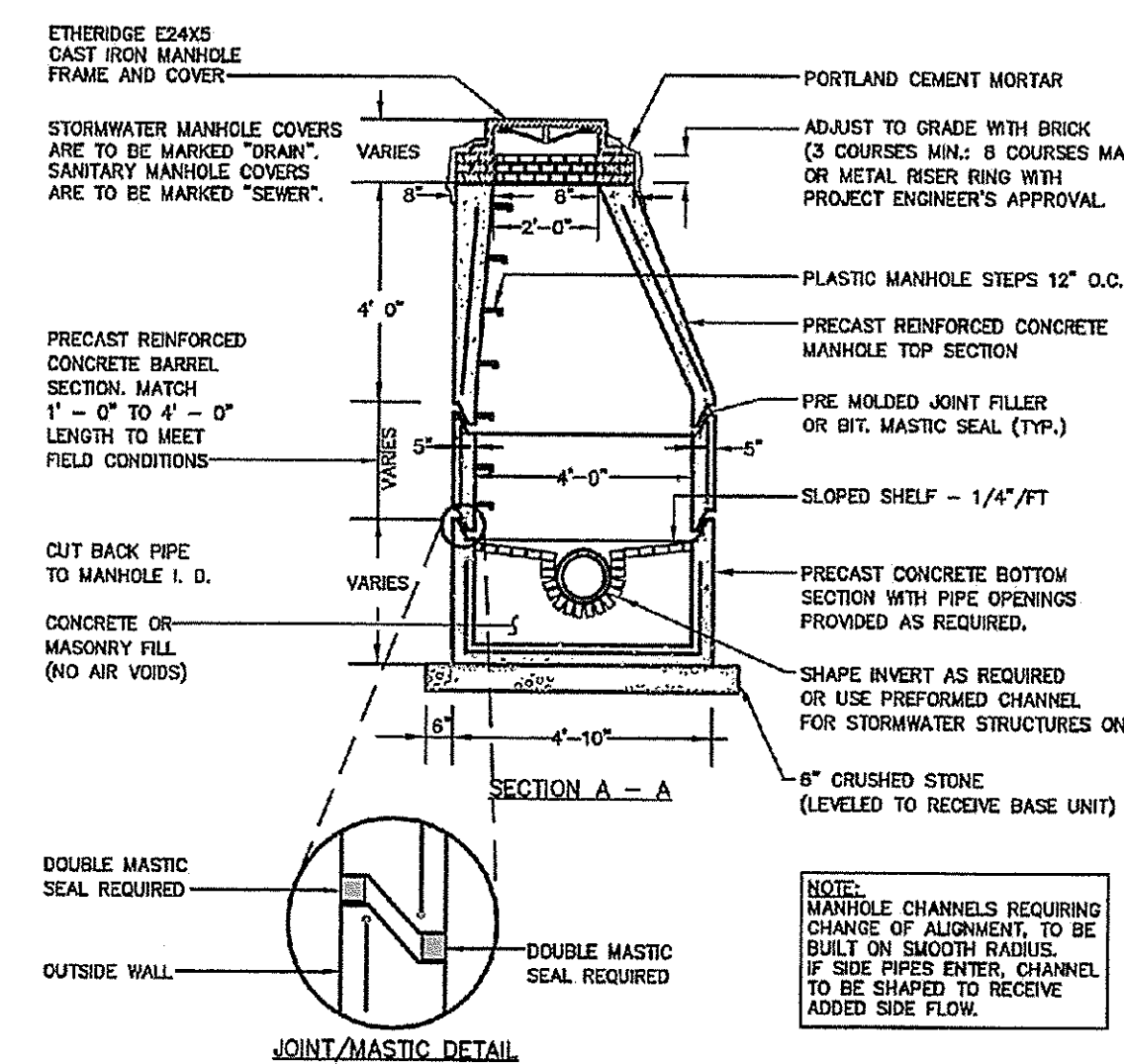
NOTE: ALL MANHOLE COVERS SHALL BE SOLID AND SHALL HAVE ONE 7/8" DIAMETER DRILLED PICK HOLE, LOCATED 8" FROM THE CENTER OF THE COVER.

NOTE: ALL SANITARY MANHOLE COVERS SHALL HAVE "SEWER" CAST INTO THE COVER. ALL STORMWATER/RAIN MANHOLE COVERS SHALL HAVE "DRAIN" CAST INTO THE COVER.



9 CONCRETE IRON MANHOLE COVER & FRAME (11-5)

NOT TO SCALE



8 PRECAST CONCRETE MANHOLE(11-1)

NOT TO SCALE

UNDERGROUND UTILITIES WARNING TAPE

IDENTIFICATION TAPE TO BE INSTALLED ABOVE ALL NEW UNDERGROUND UTILITIES AND ABOVE ANY EXISTING UTILITIES THAT MAY BE EXPOSED BY THIS CONSTRUCTION.

DETECTABLE UNDERGROUND MARKING TAPE TO BE PERMANENT, BRIGHT-COLORED, CONTINUOUS-PRINTED PLASTICIZED ALUMINUM TAPE, INTENDED FOR DIRECT-BURIAL SERVICE NOT LESS THAN 3" WIDE x 5 MILS THICK. PROVIDE TAPE WITH BLACK PRINTING IDENTIFYING THE UTILITY. DETECTABLE WARNING TAPE REQUIRED OVER ALL WATER, SEWER, DRAINAGE, OR GAS UTILITIES. TAPE TO BE TERRA TAPE BY REEF INDUSTRIES, INC., www.refindustries.com, OR EQUAL.

APWA UNIFORM COLOR CODE:

WHITE	PROPOSED EXCAVATION
PINK	TEMPORARY SURVEY MARKINGS
RED	ELECTRIC POWER LINES, CABLES, CONDUIT AND LIGHTING CABLES
YELLOW	GAS, OIL, STEAM, PETROLEUM OR GASEOUS MATERIALS
ORANGE	COMMUNICATION, ALARM OR SIGNAL LINES, CABLES OR CONDUIT
BLUE	POTABLE WATER
PURPLE	RECLAIMED WATER, IRRIGATION AND SLURRY LINES
GREEN	SEWERS AND DRAIN LINES

1 UNDERGROUND UTILITIES WARNING TAPE

6	4/17/14	SUBMITTED FOR FINAL APPROVAL
5	3/27/14	SUBMITTED FOR FINAL APPROVAL
4	2/26/14	100% CONSTRUCTION DOCUMENTS
3	1/27/14	50% PRICING SET
2	1/13/14	REV'D PER STAFF REVIEW
1	1/2/14	CHANGED DRAWING NUMBER, ADDED DETAIL 8

118 CONDOMINIUMS, LLC
118 CONGRESS STREET, PORTLAND ME

118 on MUNJOY HILL
118 CONGRESS STREET, PORTLAND, ME

PINKHAM & GREER

CONSULTING ENGINEERS
28 VANNAH AVENUE
PORTLAND, MAINE

DETAILS

SCALE: AS SHOWN DRN BY: JDC
DATE: NOVEMBER 13, 2013 DESG BY: TSG
PROJECT: 13143 CHK BY:

C1.6

