

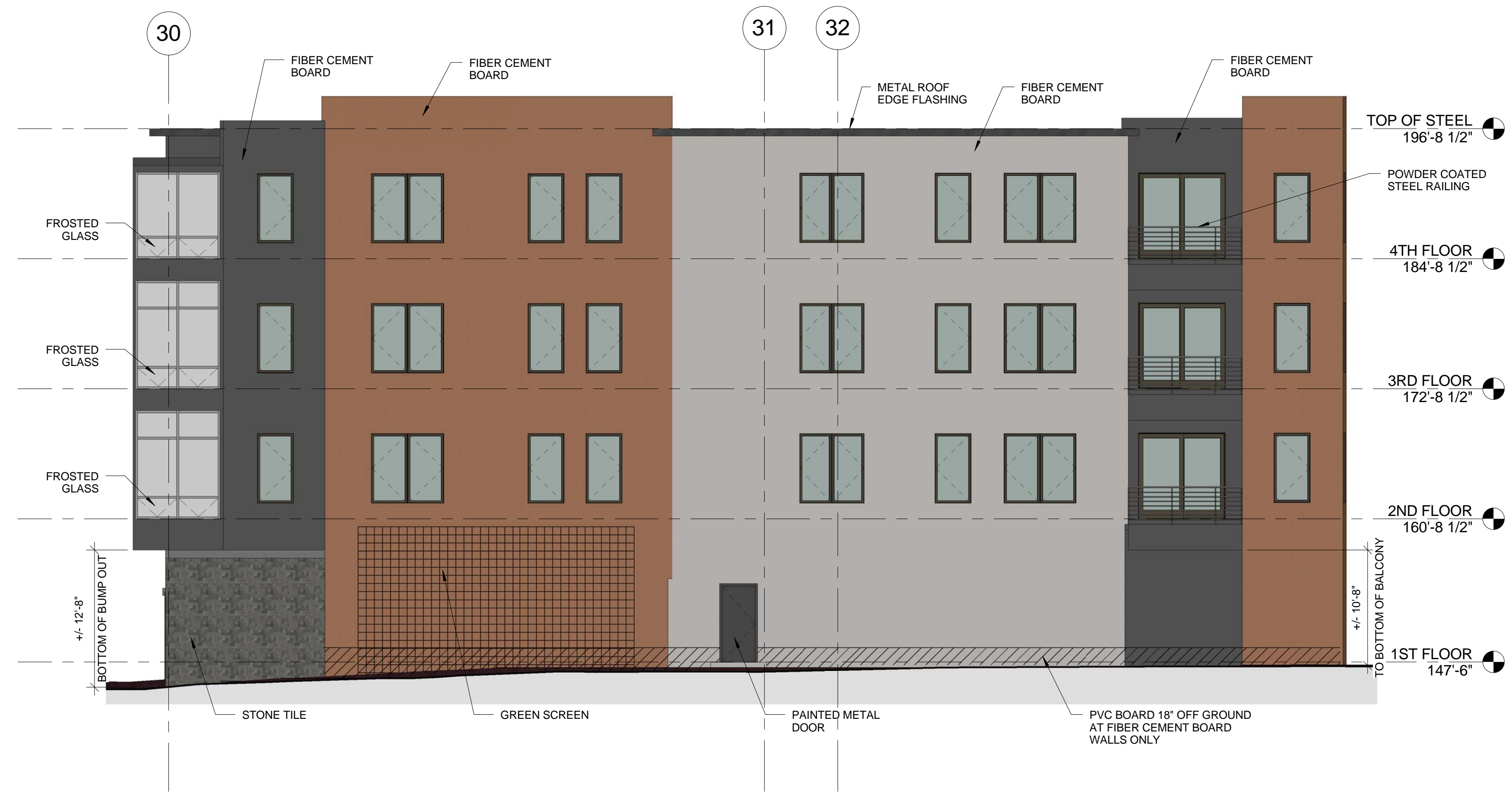


1 NORTH ELEVATION
1/8" = 1'-0"



2 EAST ELEVATION
1/8" = 1'-0"

GENERAL NOTES:
 1. BUILDING HEIGHT BY DEFINITION: 4 CORNER
 AVERAGE GRADE - 147.15' + 147.25' +
 145.00' + 147.45' / 4 = 146.71'
 AVERAGE 146' - 8 1/2" + 50' = 196' - 8 1/2"
 ALLOWABLE BUILDING HEIGHT (HEIGHT
 MEASURED TO TOP OF STEEL)
 2. ROOF PENTHOUSES NOT SHOWN IN 2D
 ELEVATIONS



3 SOUTH ELEVATION
1/8" = 1'-0"



4 WEST ELEVATION
1/8" = 1'-0"

Prepared For:
118 on Munjoy Hill, LLC
 118 CONGRESS STREET
 PORTLAND, ME 04101

Consultant:
ARCHETYPE architects
 48 Union Wharf Portland, Maine 04101
 (207) 772-6022 Fax (207) 772-4056

Architect:
118 ON MUNJOY HILL
 118 CONGRESS STREET
 PORTLAND, MAINE

Revisions:
 Date: DEC 6, 2013
 Scale: 1/8" = 1'-0"
BUILDING ELEVATIONS

A2.01