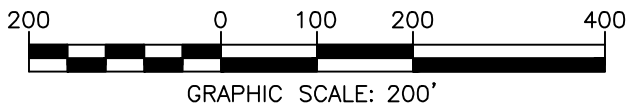
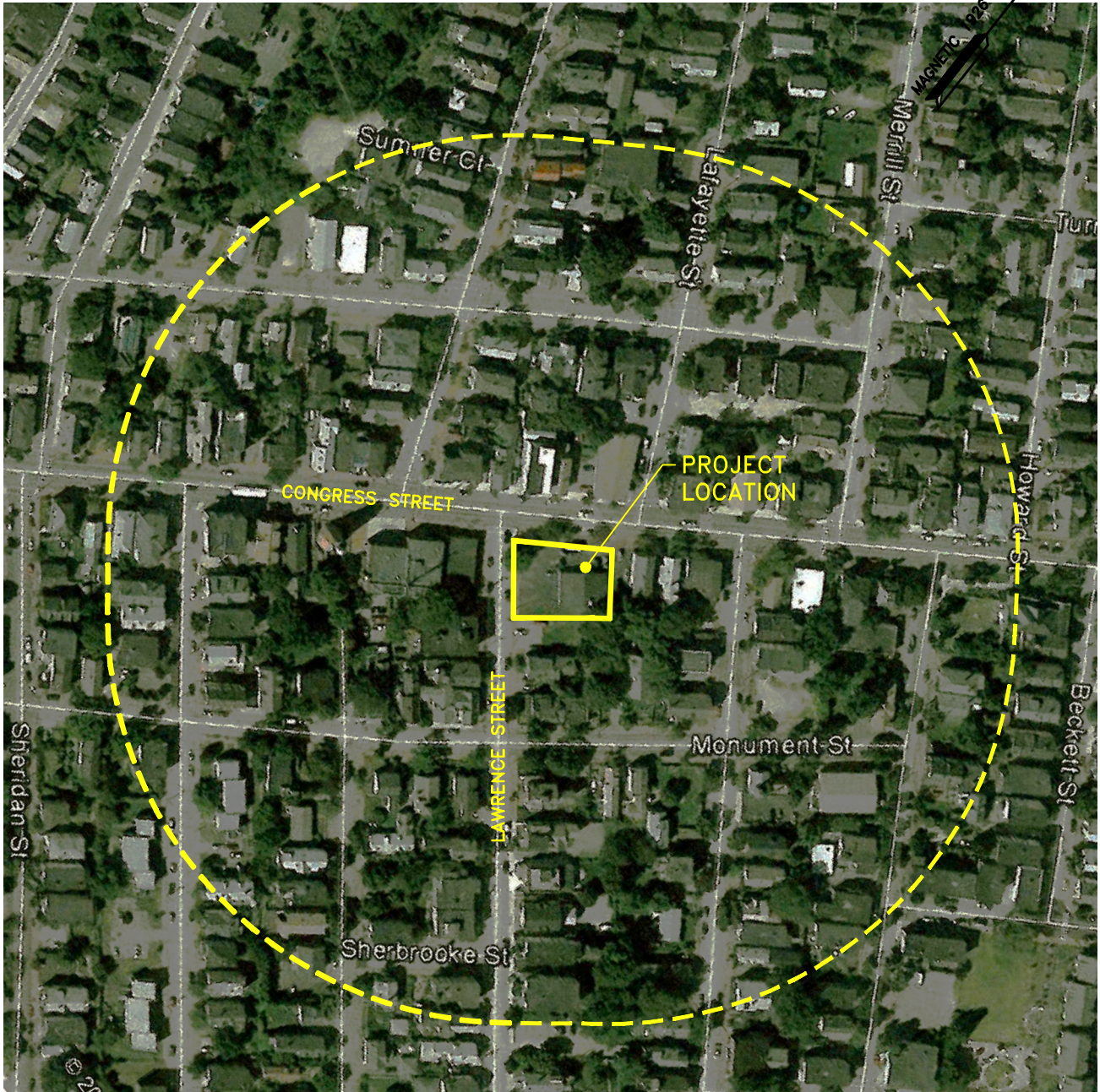


Name: PORTLAND WEST  
 Date: 11/5/2013  
 Scale: 1 inch equals 1000 feet

Location: 043° 39' 45.11" N 070° 15' 2.60" W  
 Caption: 13143-118 Congress Street





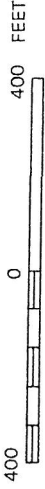
**118 CONDOMINIUM, LLC**  
**AERIAL LOCATION MAP**  
ABUTTERS WITHIN 500'  
SCALE: 1"=200'      JOB #: 13143







APPROXIMATE SCALE



NATIONAL FLOOD INSURANCE PROGRAM

# FIRM FLOOD INSURANCE RATE MAP

CITY OF  
PORTLAND, MAINE  
CUMBERLAND COUNTY

PANEL 14 OF 17  
(SEE MAP INDEX FOR PANELS NOT PRINTED)

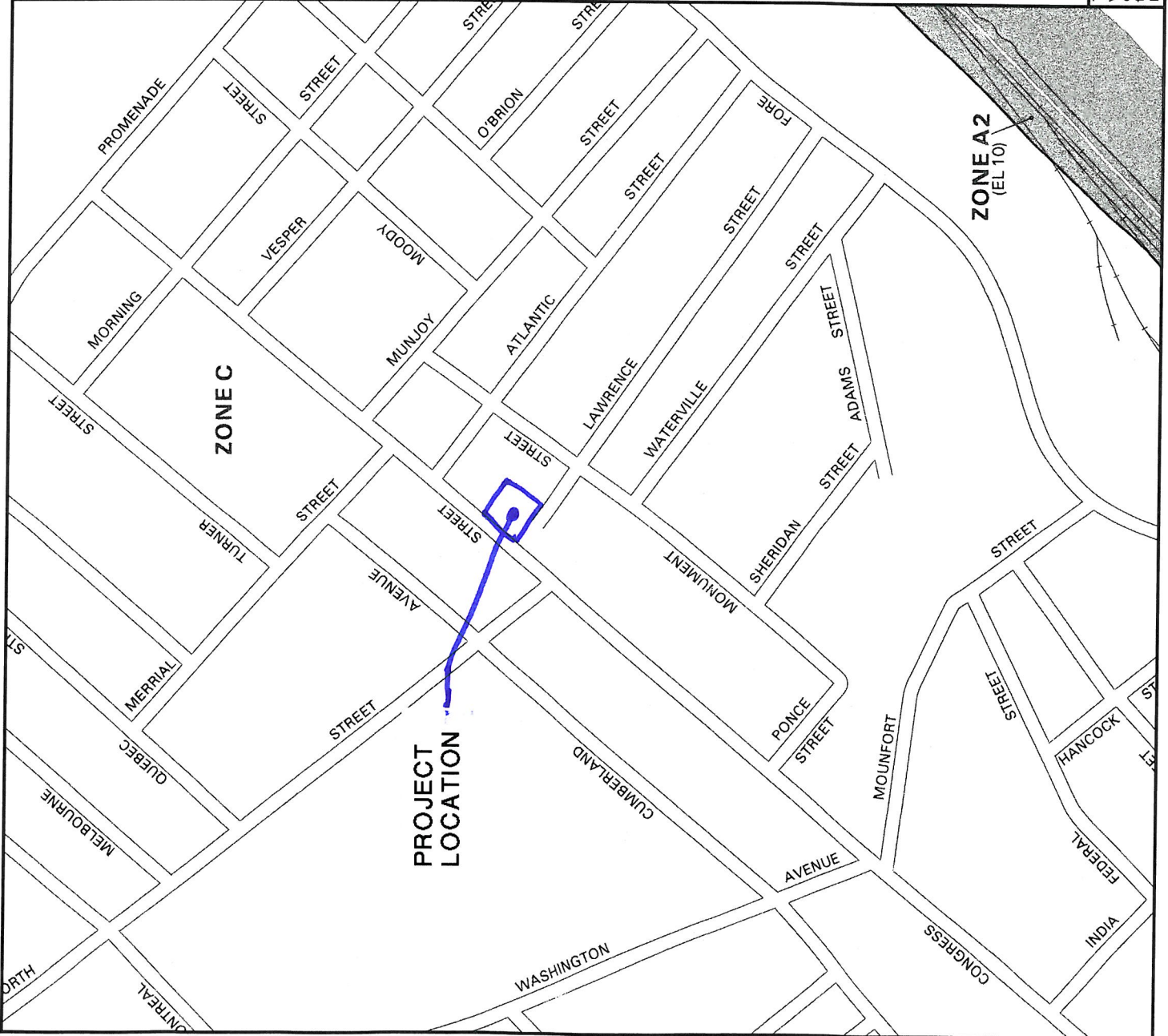
COMMUNITY-PANEL NUMBER  
230051 0014 B

EFFECTIVE DATE:  
JULY 17, 1996



Federal Emergency Management Agency

This is an official copy of a portion of the above referenced flood map. It was extracted using F-MIT On-Line. This map does not reflect changes or amendments which may have been made subsequent to the date on the title block. For the latest product information about National Flood Insurance Program flood maps check the FEMA Flood Map Store at [www.msc.fema.gov](http://www.msc.fema.gov)



PROMENADE STREET

MORNING STREET

VESPER STREET

MUNJOY STREET

ATLANTIC STREET

O'BRIEN STREET

LAWRENCE STREET

WATERVILLE STREET

FORE STREET

ADAMS STREET

SHERIDAN STREET

MONUMENT STREET

PONCE STREET

MOUNFORT STREET

INDIA STREET

HANCOCK STREET

CONGRESS STREET

WASHINGTON AVENUE

CUMBERLAND AVENUE

TURNER STREET

MORNING STREET

ATLANTIC STREET

MUNJOY STREET

LAWRENCE STREET

WATERVILLE STREET

ADAMS STREET

SHERIDAN STREET

MONUMENT STREET

PONCE STREET

MOUNFORT STREET

INDIA STREET

TURNER STREET

MORNING STREET

VESPER STREET

MUNJOY STREET

ATLANTIC STREET

LAWRENCE STREET

WATERVILLE STREET

ADAMS STREET

SHERIDAN STREET

MONUMENT STREET

PONCE STREET

MOUNFORT STREET

INDIA STREET

HANCOCK STREET

CONGRESS STREET

WASHINGTON AVENUE

CUMBERLAND AVENUE

PROMENADE STREET

MORNING STREET

VESPER STREET

MUNJOY STREET

ATLANTIC STREET

LAWRENCE STREET

WATERVILLE STREET

ADAMS STREET

SHERIDAN STREET

MONUMENT STREET

PONCE STREET

MOUNFORT STREET

INDIA STREET

HANCOCK STREET

CONGRESS STREET

WASHINGTON AVENUE

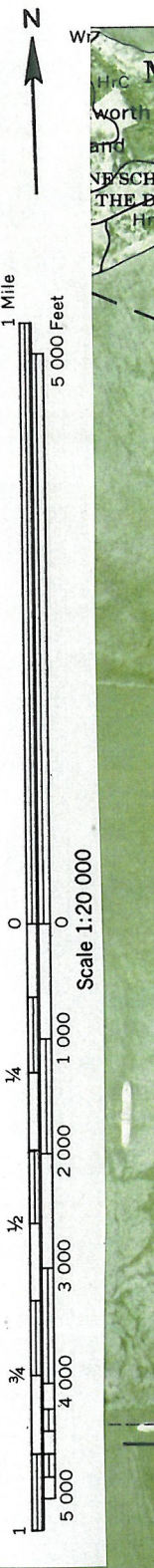
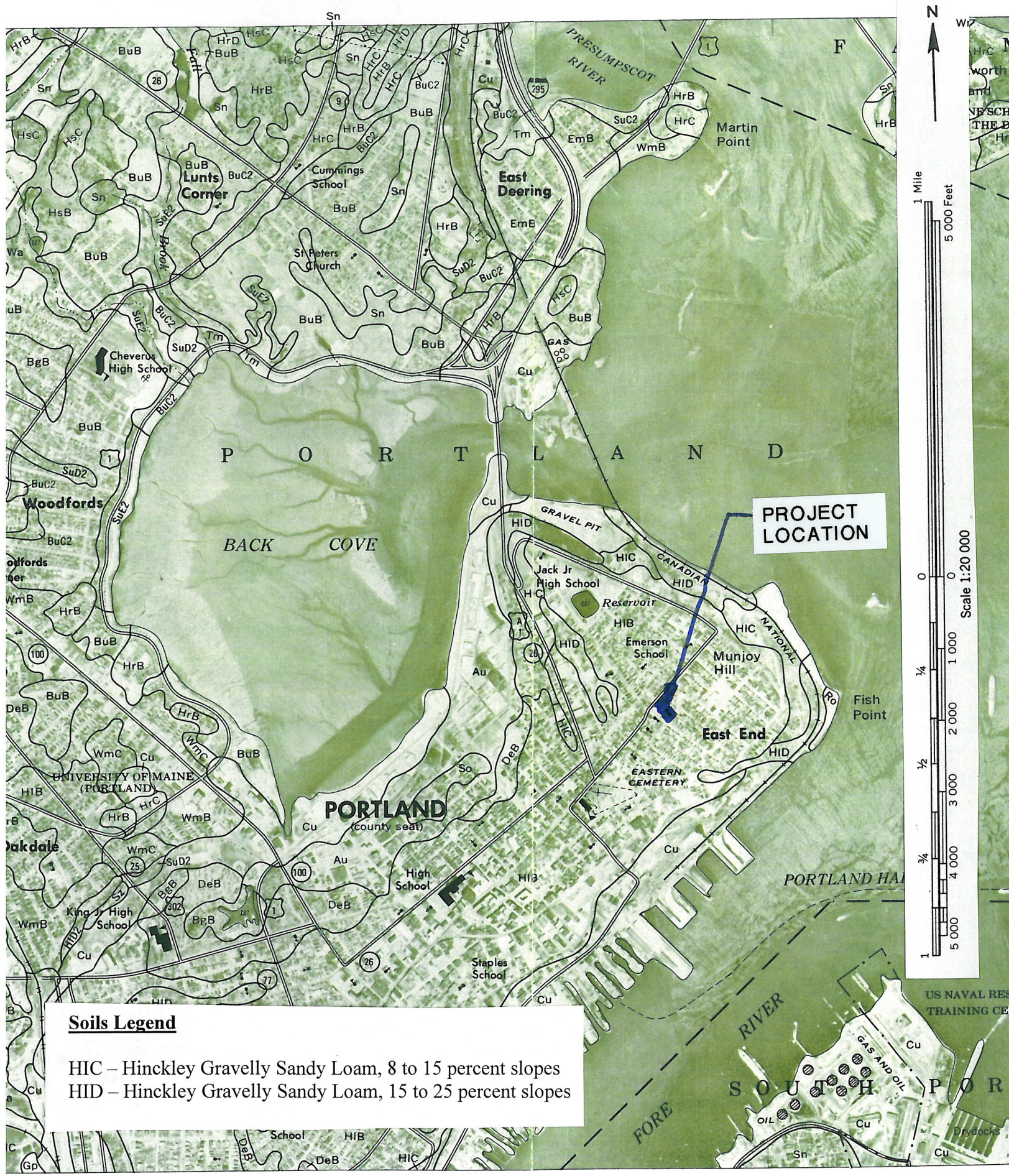
CUMBERLAND AVENUE

ZONE A2  
(EL 10)

ZONE C

PROJECT  
LOCATION





**Soils Legend**

- HIC – Hinckley Gravelly Sandy Loam, 8 to 15 percent slopes
- HID – Hinckley Gravelly Sandy Loam, 15 to 25 percent slopes