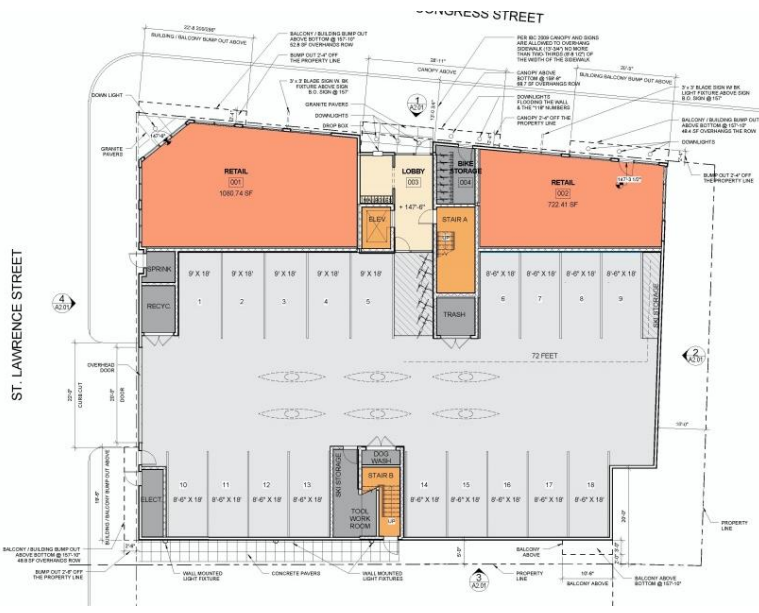
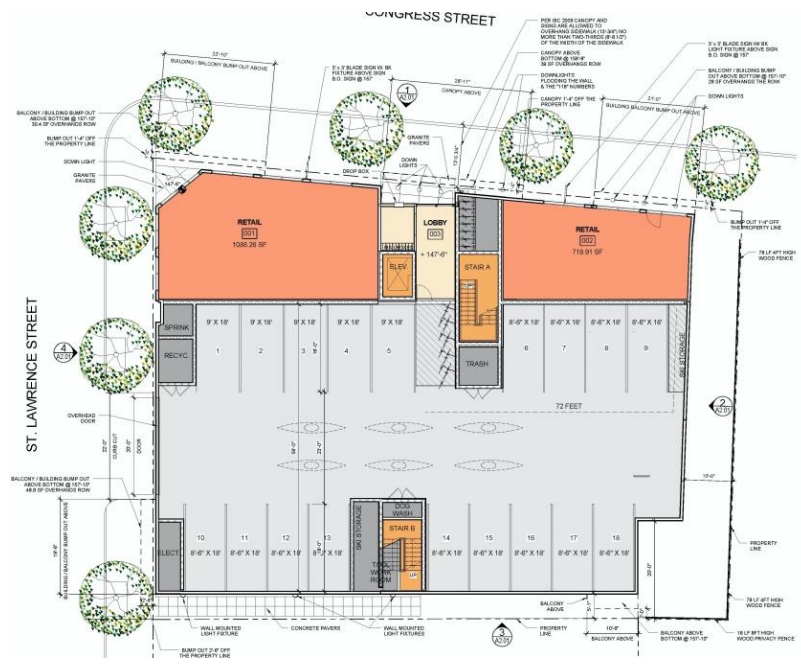


118 Congress Street Analysis re overhangs

	Submitted version seen at Workshop	Final version (Jan) for Hearing (building moved back from Congress by 1 ft)
Congress St east (3 levels) <ul style="list-style-type: none"> Overhang over ROW Length of overhang Area over ROW 	<ul style="list-style-type: none"> 2ft 4 inches 20ft 9 inches 48.4 sq ft over ROW 	<ul style="list-style-type: none"> 1ft 4 inches 21 ft 28 sq ft over ROW
Congress St west (nearest St Lawrence (3 levels) <ul style="list-style-type: none"> Overhang over ROW Length of overhang Area over ROW 	<ul style="list-style-type: none"> 2ft 4 inches 22ft 8 inches 52.8 sq ft over ROW 	<ul style="list-style-type: none"> 1ft 4 inches 22ft 10 inches 30.4 sq ft over ROW
St Lawrence St (3 levels) <ul style="list-style-type: none"> Overhang over ROW Length of overhang Area over ROW 	<ul style="list-style-type: none"> 2 ft 6 inches 19 ft 6 inches 48.8 sq ft over ROW 	<ul style="list-style-type: none"> 2 ft 6 inches 19 ft 6 inches 48.8 sq ft over ROW
Entrance Canopy over Congress St <ul style="list-style-type: none"> Overhang over ROW Length of overhang Area over ROW 	<ul style="list-style-type: none"> 2ft 4 inches 28 ft 11 inches 68.7 sq ft over ROW 	<ul style="list-style-type: none"> 1ft 4 inches 28 ft 11 inches 39 sq ft over ROW



AS CONSIDERED AT WORKSHOP



AS SUBMITTED IN JANUARY FOR HEARING