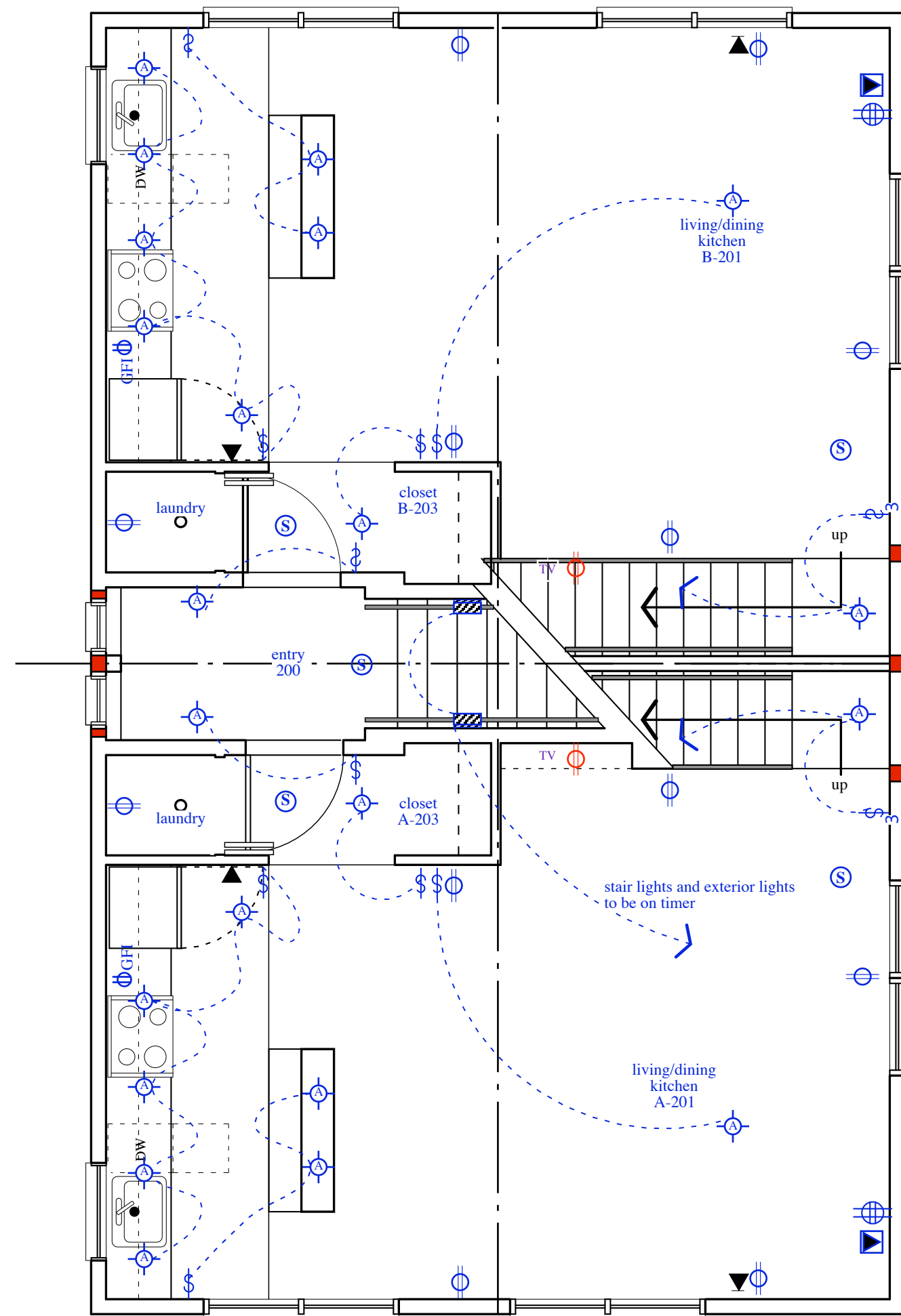
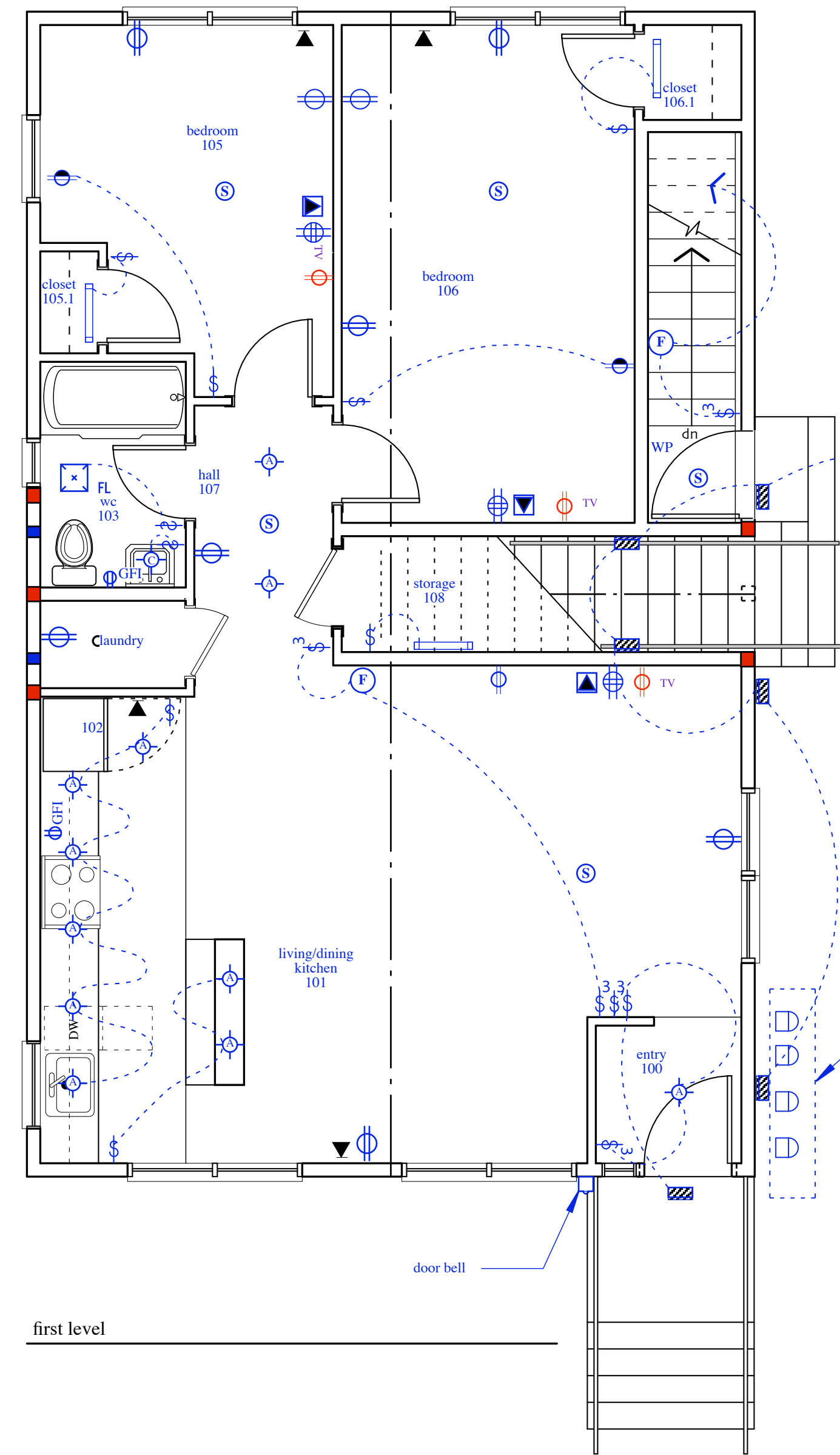


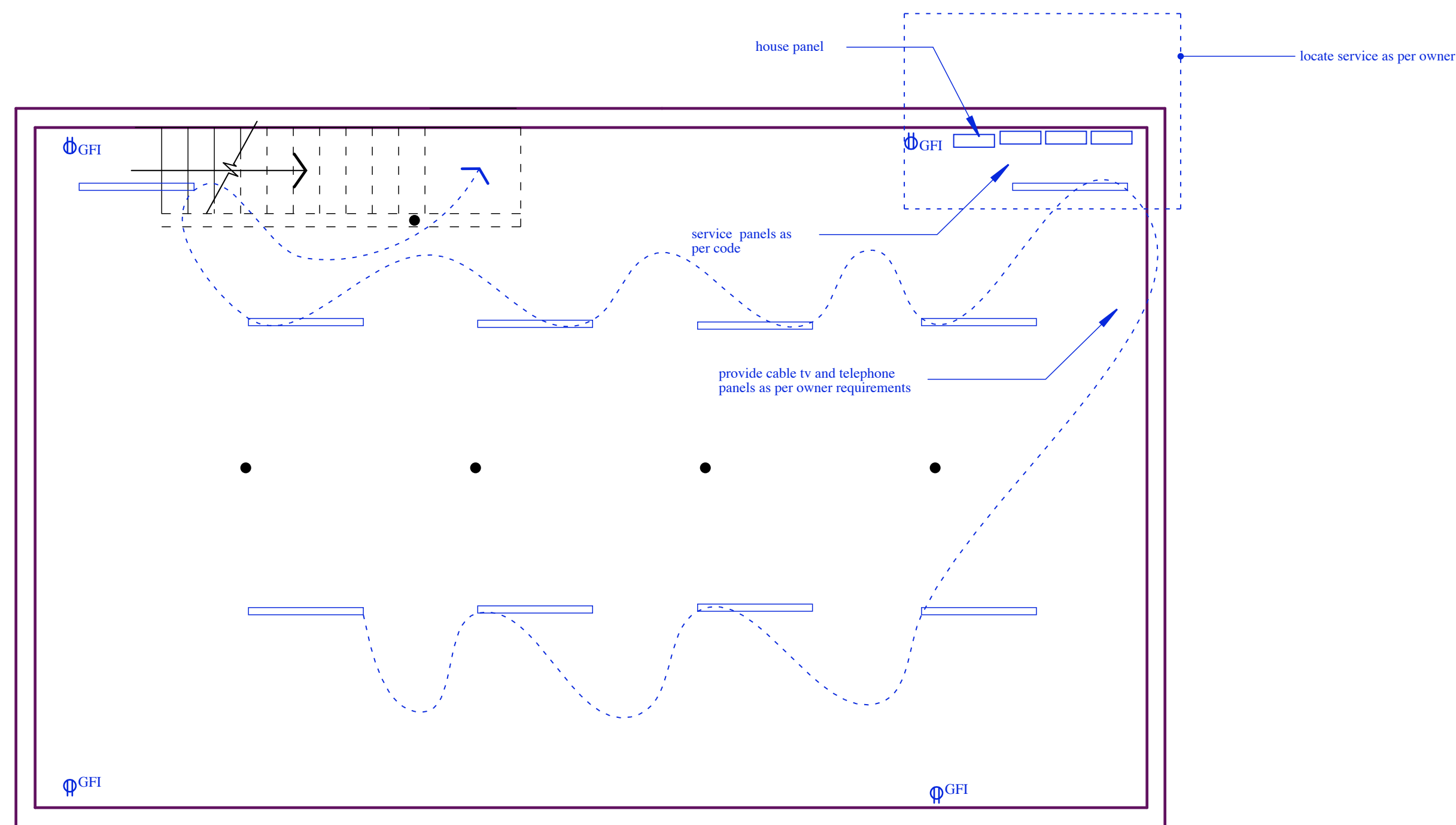
third level



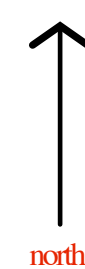
second level



first level



basement plan



- SMOKE DETECTOR
- FLOOR MOUNTED
- DUPLEX
- BOTTOM SWITCHED
- GFCI
- DEDICATED
- WEATHER PROTECTED
- WP
- QUAD
- TV/CABLE/DUPLEX
- DOOR BELL
- SWITCH
- 3-WAY SWITCH
- 3-WAY DIMMER
- DIMMER SWITCH
- MULTIPLE TELEPHONE LINES
- TELEPHONE
- WALL MNTD FLUOR 18"
- 4' FLUOR FIXTURE
- FIXTURE A RECESSED
- FIXTURE B 'EYE-BALL'
- FIXTURE C SURFACE
- FIXTURE D TRACK LIGHTING-8'-0"
- FIXTURE E SURFACE
- FIXTURE F SURFACE
- FIXTURE G SHOWER/BATH
- FIXTURE K EXTERIOR RECESSED
- WALL MNTD SCONCE
- WALL MNTD SCONCE EXTERIOR GRADE
- FAN
- FAN/LIGHT COMB
- WALL MOUNTED EX FAN
- WALL MOUNTED FIXTURE ELECTRIC HEATER
- DATA AND VOICE

ELECTRICAL GENERAL NOTES:

1. ALL ELECTRICAL WORK TO COMPLY WITH STATE AND LOCAL CODES.
2. OWNER/CONTRACTOR TO PROVIDE FIXTURE SCHEDULE.
3. CONTRACTOR TO COORDINATE WORK WITH OTHER TRADES - MECHANICAL AND PLUMBING.
4. LOCATION OF SERVICE AND METER BY OWNER.

atlantic street apartments
atlantic street
portland maine

electrical plans
07 march 2005

E 1.1

1/4" = 1' - 0"

design north
scale: 1/4" = 1' - 0"

revision: 3/7/05
(laundry)
9/12/05

james sterling architect
142 high street
portland, maine