

NC-100R(A)

Relay Module for FireWarden Series Panels


Addressable

General

The **NC-100R(A)** Addressable Relay Module provides NOTIFIER's **FireWarden Series** intelligent control panels with two isolated sets of Form-C dry-contact outputs for activating a variety of auxiliary devices, such as fans, dampers, door holders, control equipment, etc. Addressability allows the dry contact to be activated, either manually or through panel programming, on a select basis.

Features

- Built-in type identification automatically identifies these devices to the control panel.
- Internal circuitry and relay powered directly by two-wire SLC loop.
- Integral LED "blinks" green each time a communication is received from the control panel and turns on in steady when activated.
- High noise immunity (EMF/RFI).
- Wide viewing angle of LED.
- SEMS screws with clamping plates for wiring ease.
- Direct Decade entry of address: 01 – 99 with the FireWarden-100-2(C) and 01 – 50 with the FireWarden-50(C).

Applications

The NC-100R(A) may be programmed to operate dry contacts for door holders, Air Handling Unit shutdown, etc., and to reset four-wire smoke detector power.

Construction

- The face plate is made of off-white heat-resistant plastic.
- Controls include two rotary switches for direct-dial entry of address setting.
- The NC-100R(A) provides two Form-C dry contacts that switch together.

Operation

Each NC-100R(A) uses one of the addresses on a SLC loop. It responds to regular polls from the control panel and reports its type and status. The LED blinks with each poll received. On command, it activates its internal relay.

Rotary switches set a unique address for each module. The address may be set before or after mounting. The built-in TYPE CODE (not settable) will identify the module to the control panel.


NC-100R(A)

60379cov.jpg

Specifications

Normal operating voltage: 15 to 32 VDC.

Maximum SLC current draw: 6.5 mA (LED).

Average operating current: 230 μ A direct poll (CLIP mode), 255 μ A group poll with LED flashing.

EOL resistance: not used.

Temperature range: 32°F to 120°F (0°C to 49°C).

Humidity range: 10% to 93% non-condensing.

Dimensions: 4.5" (11.43 cm) high x 4" (10.16 cm) wide x 1.25" (3.175 cm) deep. Mounts to a 4" (10.16 cm) square x 2.125" (5.398 mm) deep box.

Relay Contact Ratings

Load Description	Application	Maximum Voltage	Current Rating
Resistive	Non-Coded	30 VDC	3.0 A
Resistive	Coded	30 VDC	2.0 A
Resistive	Non-Coded	110 VDC	0.9 A
Resistive	Non-Coded	125 VAC	0.9 A
Inductive (L/R=5ms)	Coded	30 VDC	0.5 A
Inductive (L/R=2ms)	Coded	30 VDC	1.0 A
Inductive (PF=0.35)	Non-Coded	125 VAC	0.5 A

Agency Listings and Approvals

In some cases, certain modules may not be listed by certain approval agencies, or listing may be in process. Consult factory for latest listing status.

- **UL/ULC Listed:** S635.
- **CSFM approved:** file 7300-0028:230.
- **FM approved.**
- **MEA approved:** file 72-01-E, Vol. 2.

Product Line Information

NC-100R: Intelligent addressable relay module.

NC-100RA: Intelligent addressable relay module, ULC listed model.

SMB500: Optional surface-mount backbox.

NOTE: For installation instructions, see document 156-2593-001 and refer to the SLC Wiring Manual, document 52304.

NOTIFIER® is a registered trademark of Honeywell International Inc.
©2010 by Honeywell International Inc. All rights reserved. Unauthorized use of this document is strictly prohibited.



This document is not intended to be used for installation purposes.
We try to keep our product information up-to-date and accurate.
We cannot cover all specific applications or anticipate all requirements.
All specifications are subject to change without notice.



Made in the U.S. A.

For more information, contact Notifier. Phone: (203) 484-7161, FAX: (203) 484-7118.
www.notifier.com

Multi-Voltage Conventional Relays



Miscellaneous

General

Notifier's multi-voltage conventional relays are used for high-current switching applications such as fan and damper assembly control, door control, air handling unit controls, and other types of system interfacing.

The R-10T(A)/20T(A) and R-14T(A)/R-24T(A) models are multi-voltage relays with terminal strip field wiring connections, mounting track and hardware. The R-10T(A) is a single FORM-C (SPDT) relay with a red activation LED, and the R-14T(A) is a 4-gang 1 FORM-C (SPDT) relay with 4 red activation LEDs. The R-20T(A) is a single 2 FORM-C (DPDT) relay with red activation LED, and the R-24T(A) is a 4-gang 2 FORM-C (DPDT) relay with 4 red activation LEDs.

The R-10E(A)/R-20E(A) and R-14E(A)/R-24E(A) are similar to the T series track mount relays, but they are mounted into a steel enclosure. The enclosure has a removable front cover that provides easy access and a LED viewing hole on the top of the cover.

PR-1(A)/PR-2(A)/PR-3(A) are epoxy encapsulated multi-voltage relays. They are single pole double throw relays that use a red LED as a visible indication of relay coil energization. PR-3 is identical to PR-2 except it has an extra pair of wires for redundant power input.

Model EOLR-1(A) is an epoxy encapsulated single pole single throw, normally open relay that can be used as an end of line device in fire alarm systems, e.g. to supervise power supplies.

Specifications

R-10T(A)/R-14T(A)/R-20T(A)/ R-24(A)T

Operating Voltage Range: 18-35 VDC, 18-35 VAC, 115 VAC, 230 VAC.

Operating Current: 23 mA @ 24 VDC, 59 mA @ 24 VAC, 150 mA @ 120 VAC, 180 mA @ 240 VAC [R-10T(A)/R-14T(A)].

40 mA DC max. @ 24 VDC, 24 VAC, 92 mA @ 24 VAC, 220 mA @ 120 VAC, 260 mA @ 240 VAC [R-20T(A)/R-24T(A)]

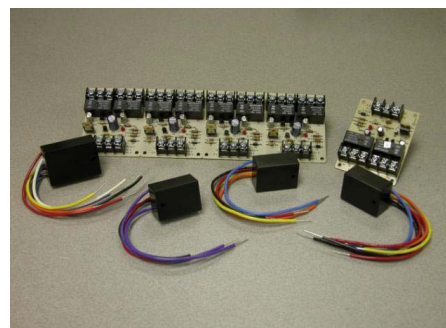
Humidity Range: 10% to 93% (non-condensing).

Dimensions: R-10T(A)/ R-20T(A): 2.5"L x 3.35"W x 1.2"H.

R-14T(A)/R-24T(A): 10"L x 3.35"W x 1.2"H.

Operating Temperature: -40° F to 158° F (-40°C to 70°C)

Contact Ratings: 24 VDC: 7A with L/R = 5 mS.
120 VAC: 10 A.
120 VAC: 1/6 HP.
230 VAC: 7 A.



Multi-Voltage Conventional Relays

7015dn015g101

R-10E(A)/ R-14E(A)/R-20E(A)/ R-24E(A)

Operating Voltage Range: 18-35 VDC, 18-35 VAC, 115 VAC, 230 VAC.

Operating Current: 23 mA DC max. @ 24 V, 59 mA @ 24 VAC, 150 mA @ 120 VAC, 180 mA @ 240 VAC [R-10E(A)/R-14E(A)].

-40 mA DC max. @ 24 VDC, 24 VAC, 115 VAC, 230 VAC (R-20E/R-24E).

Humidity Range: 10% to 93% (non-condensing).

Dimensions: R-10E(A)/R-20E(A): 5.1"L x 3.75"W x 2.5"H.

R-14E(A)/R-24E(A): 11"L x 5.3"W x 2.5"H.

Operating Temperature: -40° F to 158° F (-40° C to 70° C).

Contact Ratings: 24 VDC: 7 A with L/R = 5mS.
120 VAC: 10 A.
120 VAC: 1/6 HP.
230 VAC: 7 A.

PR-1(A)

Operating Voltage Range: 18-35 VDC, 18-35 VAC, 120 VAC.

Operating Current: 15 mA DC max. @ 24 VDC, 24 VAC, 120VAC.

Humidity Range: 10% to 93% RH.

Dimensions: 0.87" H x 2.01" W x 1.42" D.

Operating Temperature: -40° F to 158° F (-40° C to 70° C).

Contact Ratings: 24 VDC: 7 A with LR = 5 mS.
120 VAC: 7 A max. (0.35 PF).
250 VAC: 10 A resistive.
30 VDC: 10 A resistive.

Wire Length: 8" minimum.

PR-2(A)/PR-3(A)

Operating Voltage Range:	10 to 40 VDC.
Operating Current:	30 mA DC max.
Humidity Range:	10% to 93% RH.
Dimensions:	0.91" H x 1.65" W x 1.22" D.
Operating Temperature:	-40° F to 158° F (-40° C to 70° C).
Contact Ratings:	120 VAC: 10 A (resistive load). 120 VAC: 7 A max. (0.35 PF). 250 VAC: 10 A max. (resistive load). 30 VDC: 10 A max. (resistive load).
Wire Length:	8" minimum.

EOLR-1(A)

Operating Voltage Range:	9 to 40 VDC.
Operating Current:	20 mA DC max.
Humidity Range:	10% to 93% RH.
Operating Temperature:	-22° F to 140° F (-30° C to 60° C).
Contact Ratings:	120 VAC: 0.5 A max. (resistive load). 30 VDC: 3 A max. (resistive load).
Wire Length:	8" minimum.

Agency Listings and Approvals

In some cases, certain modules may not be listed by certain approval agencies, or listing may be in process. Consult factory for latest listing status.

- UL/ULC Listed: S3705
- ULC Listed: CS669
- MEA: 419-04-E
- CSFM: 7300-1653:173

PRODUCT LINE INFORMATION

NOTE: "A" suffix indicates ULC listed model.

PR-1(A): Epoxy encapsulated single pull double throw (SPDT) relay. It also uses a red LED as a visible indication of relay coil energization with pigtailed.

PR-2(A): Epoxy encapsulated single pull double throw (SPDT) activated by 10 to 40 VDC. It uses a red LED as a visible indication of relay coil energization with pigtailed.

PR-3(A): Epoxy encapsulated single pull double throw (SPDT) activated by 10 to 40 VDC. It contains an additional black and red wire for redundant power input with pigtailed.

EOLR-1(A): Epoxy encapsulated single pull single throw (SPST) normally open relay that is activated by 9 to 40 VDC. This relay can be used as an end of line device in fire alarm systems, e.g., to supervise power supplies.

R-10T(A): Single (SPDT) relay with a red activation LED.

R-14T(A): 4-gang (SPDT) relay with 4 red activation LEDs.

R-20T(A): Single (DPDT) relay with a red activation LED.

R-24T(A): 4-gang (DPDT) relay with 4 red activation LEDs.

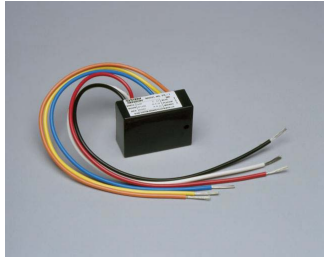
The R-10E(A)/R-20E(A) and R-14E(A)/R-24E(A) are similar to the T series track mount relays, but they are mounted into a steel enclosure. The enclosure has a removable front cover that provides easy access and a LED viewing hole on the top of the cover.

R-10E(A): Single (SPDT) relay mounted into a steel enclosure, 1 red activation LED.

R-14E(A): 4-gang (SPDT) relay mounted into a steel enclosure, 4 red activation LEDs.

R-20E(A): Single (DPDT) relay mounted into a steel enclosure, 1 red activation LED.

R-24E(A): 4-gang (DPDT) relay mounted into a steel enclosure, 4 red activation LEDs.



7015pr1.jpg

PR-1(A)



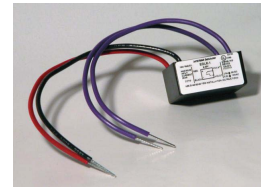
7015pr2.jpg

PR-2(A)



7015pr3.jpg

PR-3(A)



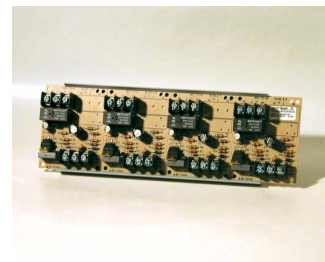
7015eolr1.jpg

EOLR-1(A)



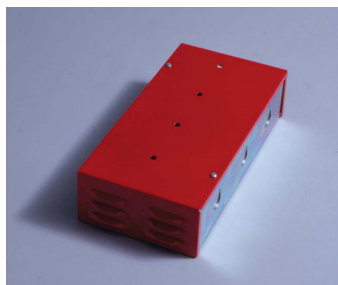
7015r10t.jpg

R-10T(A)



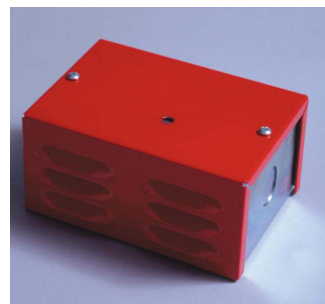
7015r14t.jpg

R-14T(A)



7015r20-24e.jpg

**R-20E(A) & R-24E(A)
Enclosures**



7015r10-14e.jpg

**R-10E(A) & R-14E(A)
Enclosures**