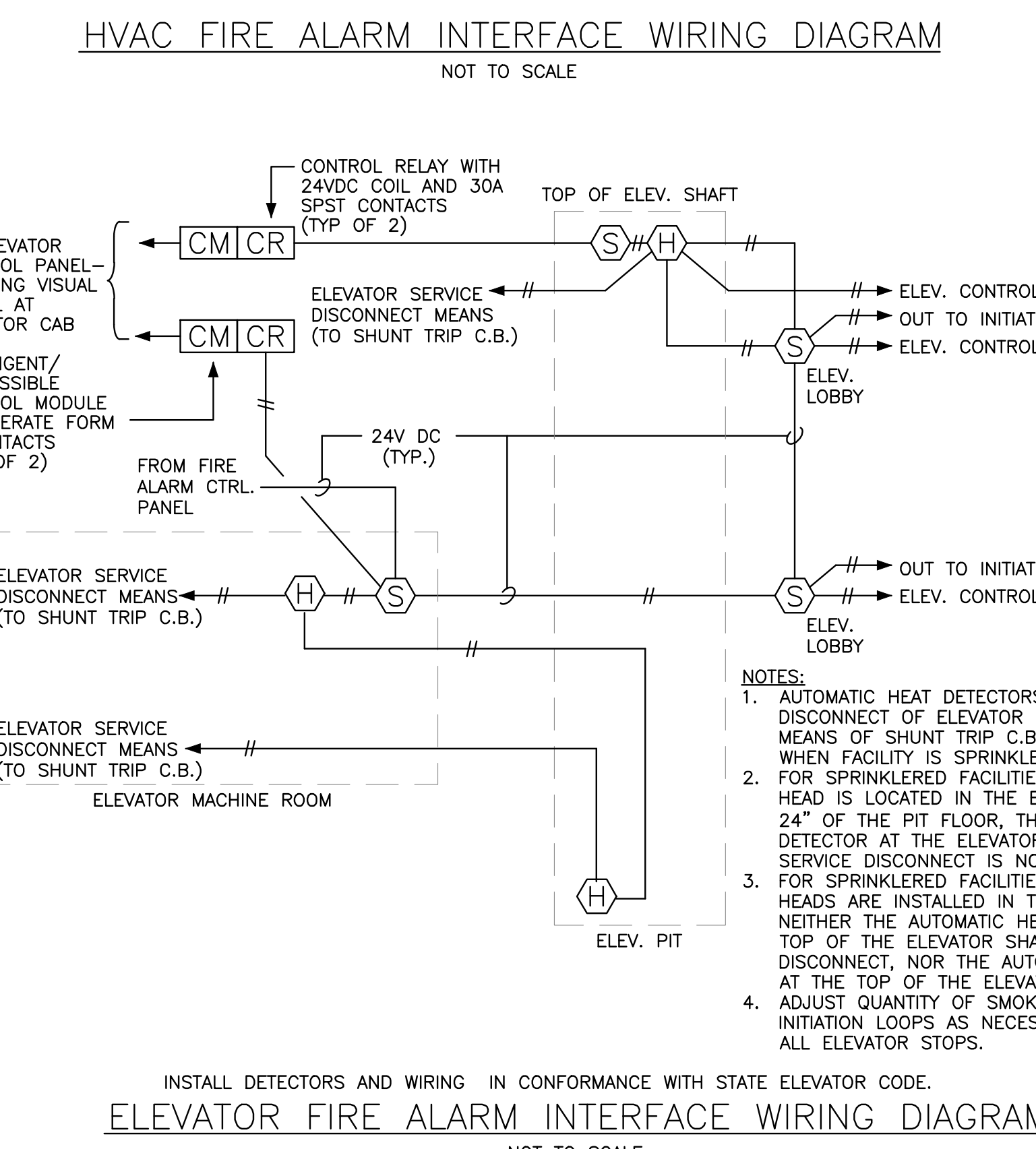
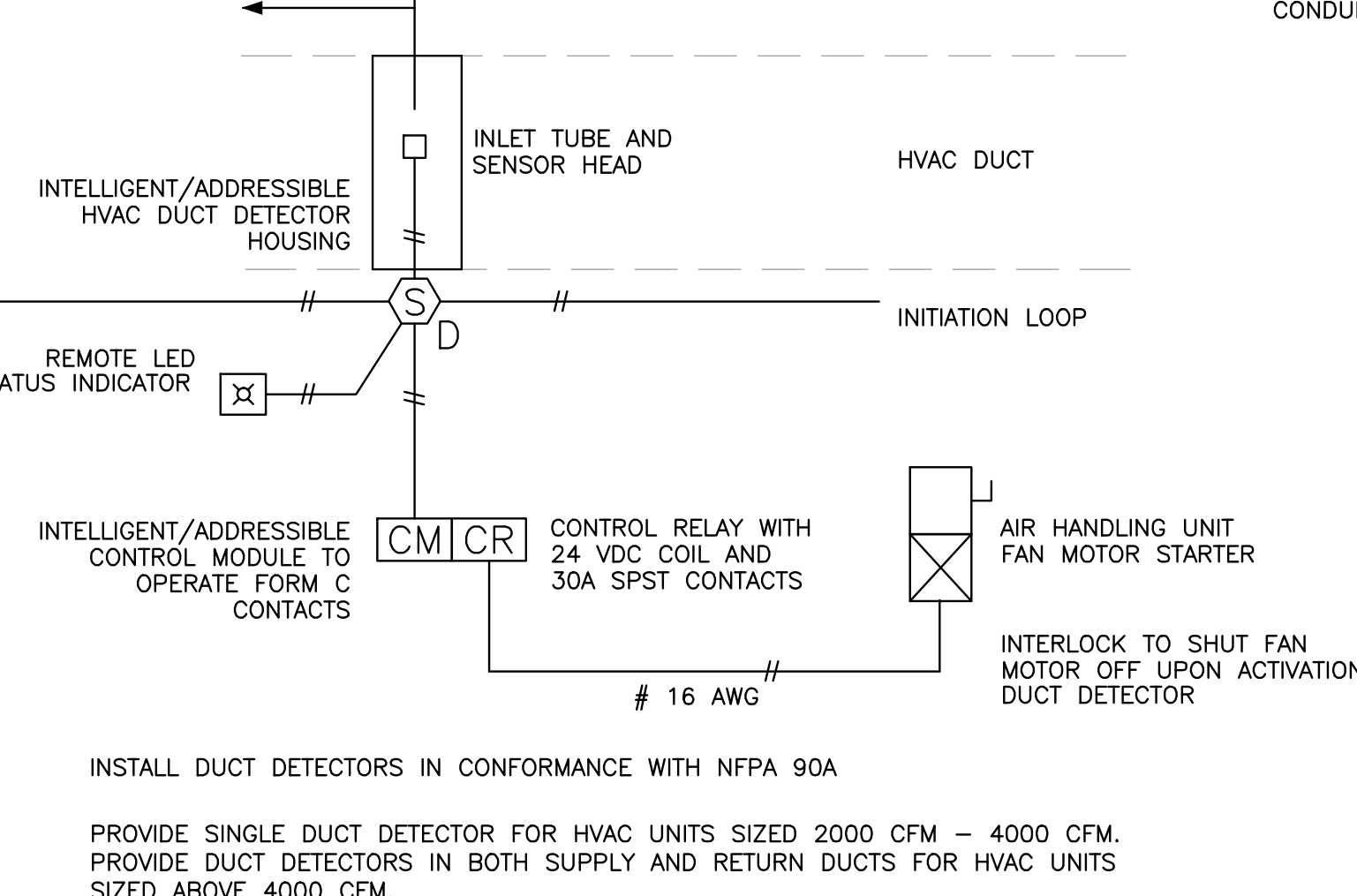
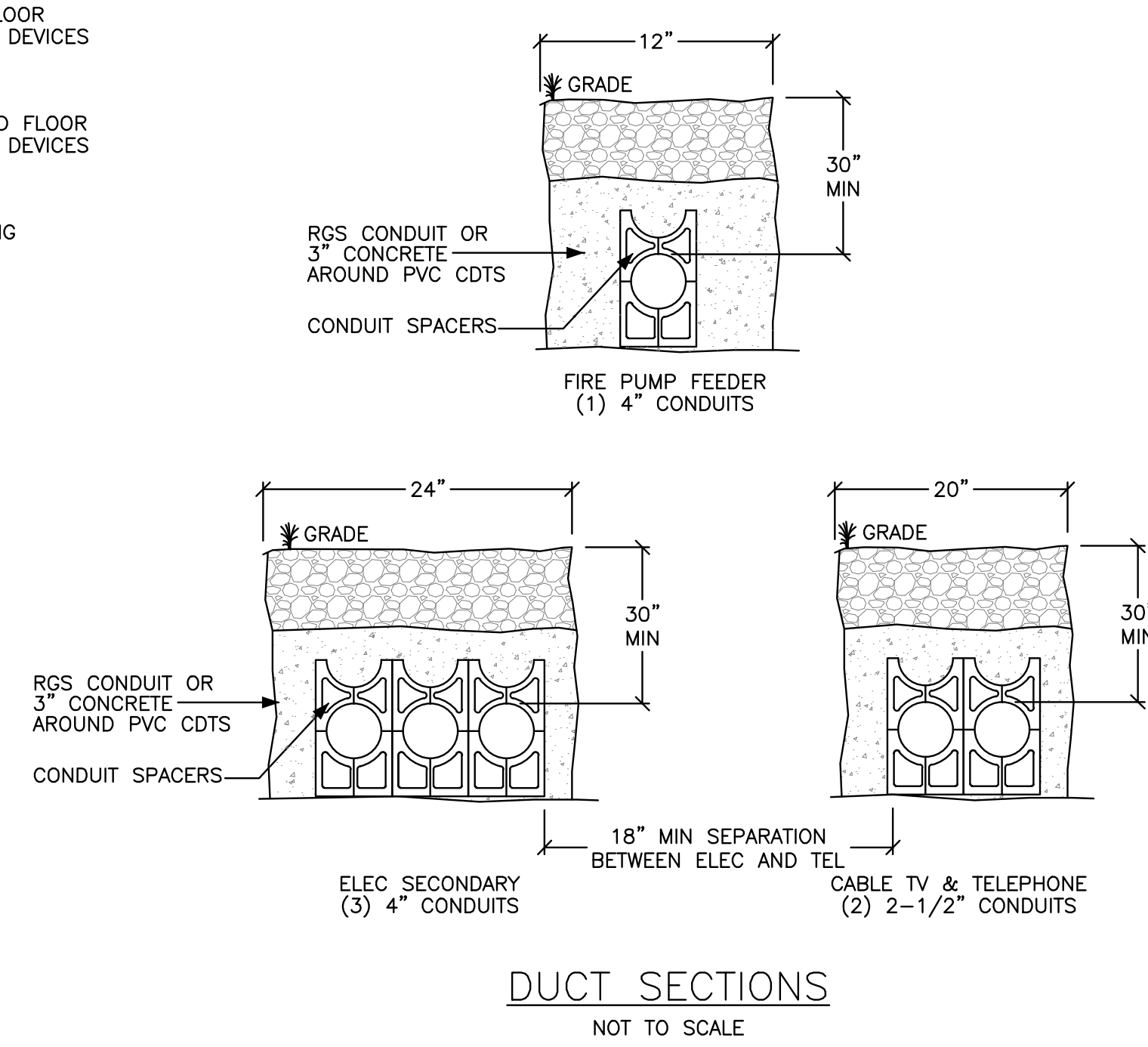
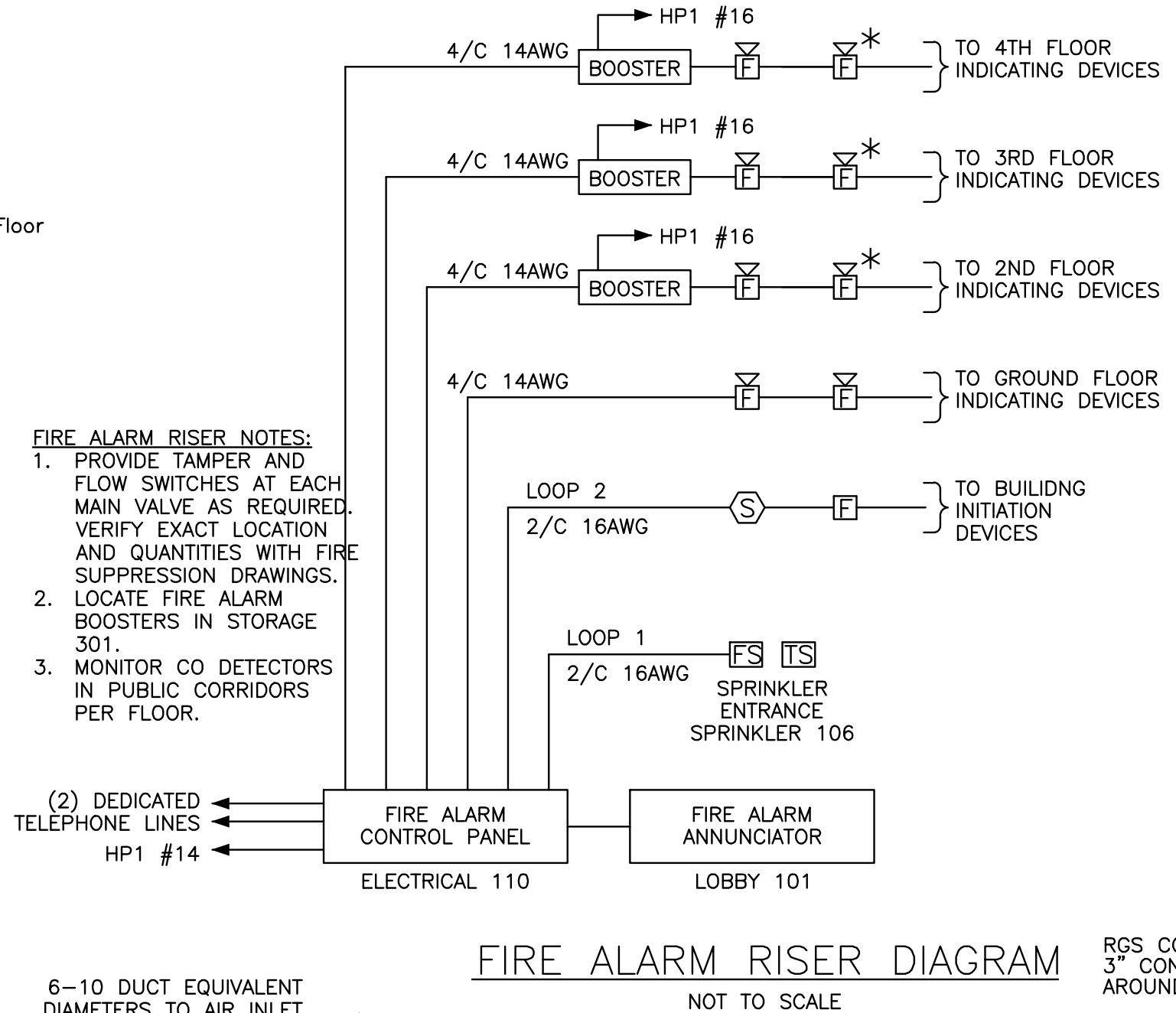
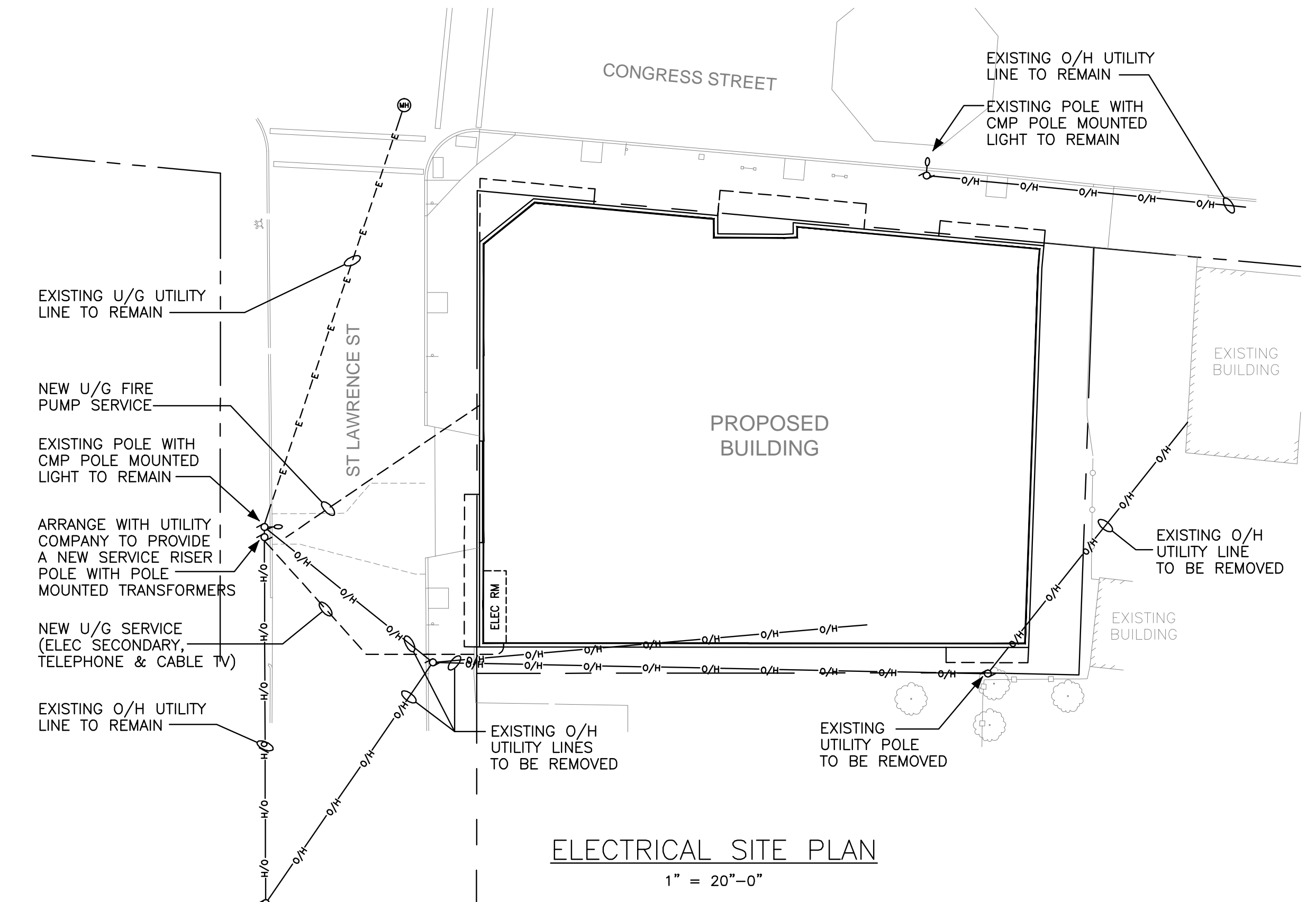
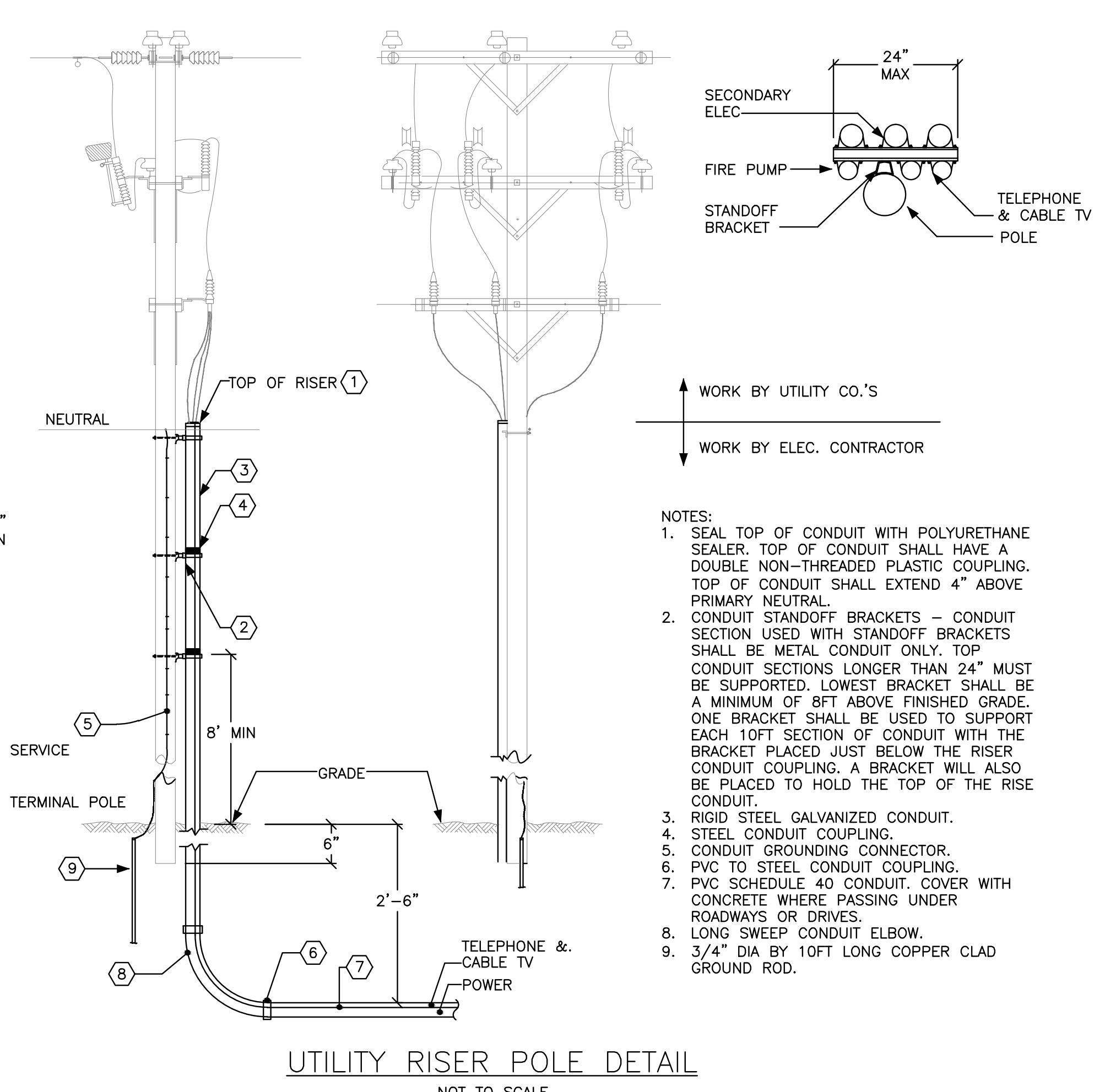


PLAN SYMBOLS

SYMBOL	DESCRIPTION
	125V, 20A, DUPLEX GROUNDED RECEPTACLE GF1 = Ground Fault Type WP = Weatherproof AC = Mount 6" Above Sink or Counter 36" = Indicates Exact Mounting Height Above Finished Floor #3 = Indicates Circuit Breaker (Including But Not Limited to Receptacles)
	125V, 20A, SIMPLEX GROUNDED RECEPTACLE
	125V, 20A, QUAD GROUNDED RECEPTACLE
	TEL/DATA OUTLET
	CABLE TELEVISION OUTLET
	DOOR INTERCOM STATION
	ELECTRIC PANELBOARD (See Plans for Details)
	CONTROL PANEL (See Plans for Details)
	UNIT LOAD CENTER
	FIRE ALARM SMOKE DETECTOR Indicates Localized Detector
	FIRE ALARM CARBON MONOXIDE SENSOR Indicates Localized Detector
	FIRE ALARM HEAT DETECTOR
	FIRE ALARM AUDIO VISUAL Indicates Visual Only
	FIRE ALARM PULL STATION
	#2 CEILING MTD. FLUORESCENT LIGHT Circuit Number Fixture Designation
	W6 WALL MOUNTED LIGHT FIXTURE Fixture Designation
	R1 RECESSED/CEILING MOUNTED LIGHT FIXTURE Fixture Designation
	S3 LIGHT/DEVICE SWITCH 3 = Three-Way Type
	CEILING MTD LTG CONTROL MOTION SENSOR
	MOD MOTOR OPERATED DAMPER (Provided Under Div 15)
	SM MANUAL MOTOR SWITCH
	JB JUNCTION BOX
	RH 120V, DIRECT CONNECTION, RANGE HOOD
	DP 120V, DIRECT CONNECTION, DISPOSER
	DW 120V, DIRECT CONNECTION, DISHWASHER
	EO 208V, 1PH DIRECT CONNECTION, ELECTRIC DOUBLE OVEN
	FP 120V, DIRECT CONNECTION, FIREPLACE
	WC 120V, DIRECT CONNECTION, WINE COOLER
	WHP 120V, DIRECT CONNECTION, WATER HEATER PUMPS
	TW 120V, (700W) DIRECT CONNECTION, TOWEL WARMER
	EH 120V, DIRECT CONNECTION, ELECTRIC HEAT
	ES 120V, DIRECT CONNECTION, FUTURE ELECTRIC DOOR STRIKE
	TH LINE VOLTAGE THERMOSTAT



SYMBOL	DESCRIPTION
	Ampere Frame Rating (3 poles Except as Noted Otherwise)
	CIRCUIT BREAKER
	Ampere Trip Rating
	ELECTRICAL CONNECTION
	GROUND CONNECTION
	EQUIPMENT ENCLOSURE
	TRANSFORMER
	FUSED SWITCH
	Ampere Rating/No. of Poles Fuse Size
	UTILITY CO. SERVICE METER



Lawrence E. Bartlett  
3/11/14

---

Prepared For:  
**118 on Munjoy Hill, LLC**  
 118 Congress Street  
 Portland, Maine

---

Consultant:  
**Bartlett Design**  
 LIGHTING & ELECTRICAL ENGINEERING  
 118 Congress Street, Portland, ME 04101  
 TEL: (207) 443-3447 FAX: (207) 443-8800

---

Architect:  
**ARCHITYPE architects**  
 48 Union Wharf Portland, Maine 04101  
 (207) 772-6022 ARCHITYPE@ARCHITYPEPA.COM

---

Project:  
**118 ON MUNJOY HILL**  
 118 CONGRESS STREET  
 PORTLAND, MAINE

---

Revisions:  
 01/27/14 50% Pricing Set  
 02/26/14 100% Construction Documents  
 03/12/14 Revised Const Docs

---

Date:  
**27 JAN 2014**

Scale:  
 As Noted

**ELECTRICAL**

**SITE PLAN & DETAILS**

---

**E0.01**

