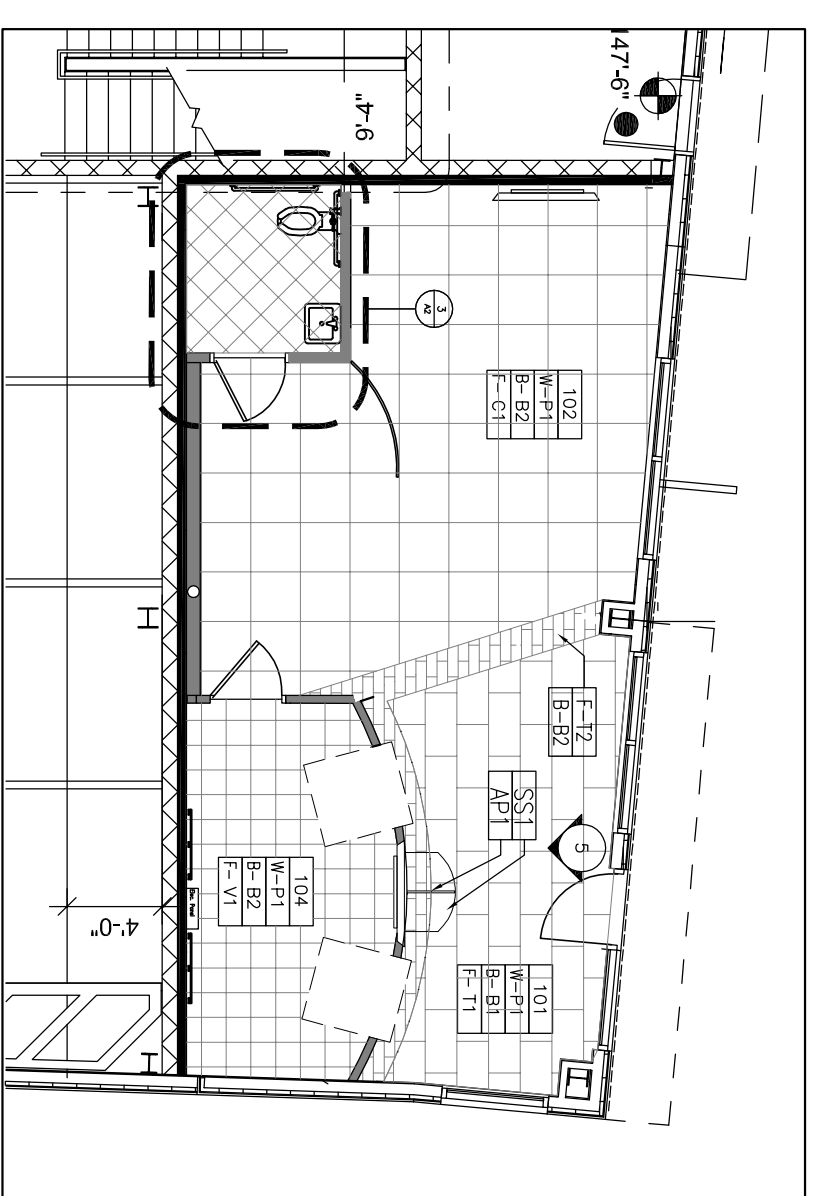
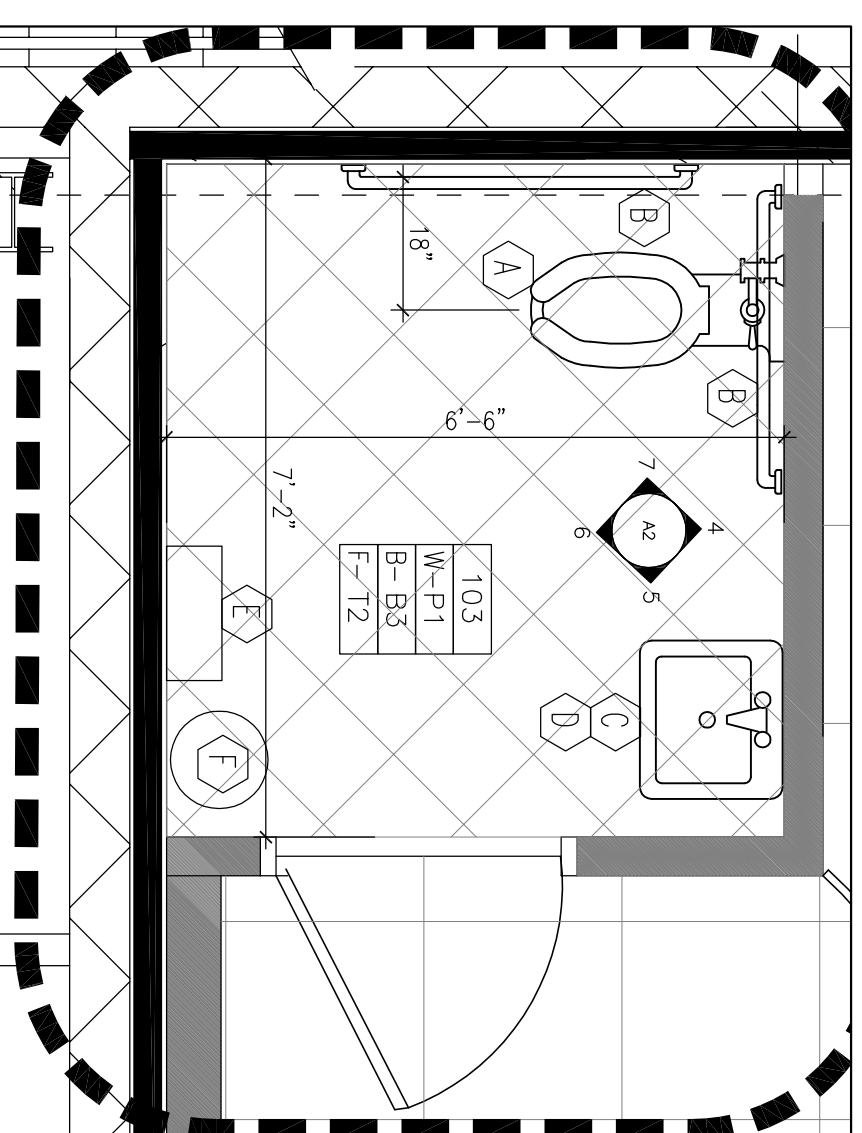


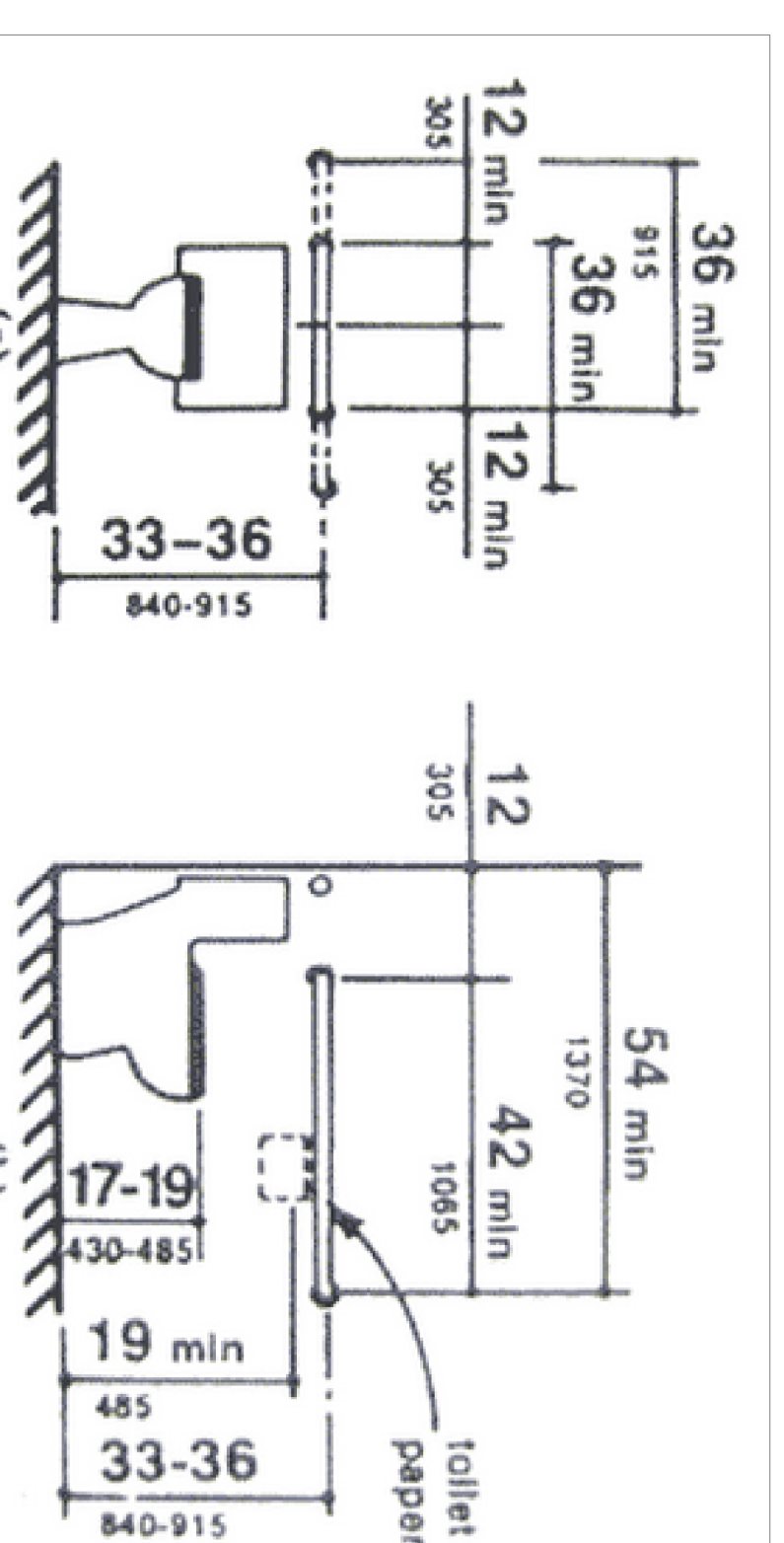
1 REFLECTED CEILING PLAN  
1/8"=1'-0"



2 FINISH PLAN  
1/8"=1'-0"



3 ENLARGED PLAN: RESTROOM FINISHES  
1/2"=1'-0"



4 ELEVATION: ADA RESTROOM GUIDE  
3/8"=1'-0"

**CEILING LEGEND:**

	NEW CEILING GRID: NEW CEILING TILES:
	DRYWALL CEILING (2) COATS FLAT CEILING WHITE PAINT
	PROVIDE SEPARATE SWITCH FOR EACH LIGHT FIXTURE TYPE WITH A GANG COVER PLATE. NOTE: SEE ENGINEERING FOR LOCATION, SPECIFICATION AND ALL REQUIREMENTS. X-1 (SINGLE FACE CEILING - NO ARROW)

**LIGHT FIXTURES**

- L1-1 2X2 LED DIRECT/DIRECT
- L1-2 SURFACE MOUNTED 2X4 DIRECT/DIRECT LED
- L1-3 4" WIDE LED LINEAR RECESSED STRIP LENGTH TBD
- L1-4 4" WIDE LED LINEAR RECESSED STRIP LENGTH TBD
- L1-5 LED TAPE WALL GRAZER

**FINISH LEGEND:**

<b>FLOOR FINISHES</b>	<b>FLOORING FINISHES</b>
<b>F1111</b> ROOM NO.	<b>F1</b> CARPET TILE
<b>F-C-01</b> FLOOR MATL.	<b>COMPANY:</b> TBD
<b>B-V-1</b> BASE MATL.	<b>STYLE/PATTERN:</b> TBD
<b>W-P-1</b> WALL FINISH	<b>COLOR:</b> TBD
	<b>REMARKS:</b> USE WITH BASE B4
	<b>EX</b> EXISTING FINISHES TO REMAIN
	<b>V1</b> VINYL COMPOSITE TILE
	<b>COMPANY:</b> TBD
	<b>STYLE/PATTERN:</b> TBD
	<b>COLOR:</b> TBD
	<b>REMARKS:</b> USE WITH BASE B4
	<b>T1</b> TILE FLOOR
	<b>COMPANY:</b> TBD
	<b>STYLE/PATTERN:</b> TBD
	<b>COLOR:</b> TBD
	<b>REMARKS:</b> USE WITH BASE B1
	<b>T2</b> TILE FLOOR
	<b>COMPANY:</b> TBD
	<b>STYLE/PATTERN:</b> TBD
	<b>COLOR:</b> TBD
	<b>REMARKS:</b> USE WITH BASE B2
	<b>T3</b> TILE FLOOR
	<b>COMPANY:</b> TBD
	<b>STYLE/PATTERN:</b> TBD
	<b>COLOR:</b> TBD
	<b>REMARKS:</b> USE WITH BASE B3
	<b>BASE FINISHES</b>
	<b>B1</b> TILE BASE
	<b>SPECIES/STAIN:</b> TBD
	<b>COLOR:</b> TBD
	<b>REMARKS:</b> 6" TILE BASE WITH COVE TOP
	<b>B2</b> TILE BASE
	<b>SPECIES/STAIN:</b> TBD
	<b>COLOR:</b> TBD
	<b>REMARKS:</b> 6" TILE BASE WITH COVE TOP
	<b>B3</b> TILE BASE
	<b>SPECIES/STAIN:</b> TBD
	<b>COLOR:</b> TBD
	<b>REMARKS:</b> 6" TILE BASE WITH COVE TOP
	<b>B4</b> WALL BASE
	<b>SPECIES/STAIN:</b> TBD
	<b>COLOR:</b> TBD
	<b>REMARKS:</b> 4" COVE BASE
	<b>WALL FINISHES</b>
	<b>P1</b> PAINT
	<b>COMPANY:</b> TBD
	<b>FINISH:</b> BENJAMIN MOORE
	<b>REMARKS:</b> EGG-SHELL
	<b>P2</b> PAINT
	<b>COMPANY:</b> TBD
	<b>COLOR:</b> BENJAMIN MOORE
	<b>REMARKS:</b> EGG-SHELL
	<b>P3</b> PAINT
	<b>COMPANY:</b> TBD
	<b>COLOR:</b> BENJAMIN MOORE
	<b>REMARKS:</b> EGG-SHELL
	<b>M1</b> MILLWORK PANELS
	<b>COMPANY:</b> TBD
	<b>STYLE/PATTERN:</b> TBD
	<b>COLOR:</b> TBD
	<b>REMARKS:</b> PROVIDE SAMPLE FOR ARCHITECT'S APPROVAL
	<b>S1</b> SOLID SURFACE
	<b>COMPANY:</b> TBD
	<b>PATTERN/TITLE:</b> TBD
	<b>COLOR:</b> TBD
	<b>REMARKS:</b> TBD

**RESTROOM FIXTURES AND ACCESSORIES:**

- A** ADA FLOOR MOUNTED TOILET  
**COMPANY:** TBD  
**STYLE/PATTERN:** TBD  
**COLOR:** TBD  
**REMARKS:** TBD
- B** ADA WALL MOUNTED GRAB BARS  
**COMPANY:** TBD  
**STYLE/PATTERN:** TBD  
**COLOR:** TBD  
**REMARKS:** TBD
- C** ADA WALL MOUNTED SINK  
**COMPANY:** TBD  
**STYLE/PATTERN:** TBD  
**COLOR:** TBD  
**REMARKS:** TBD
- D** ADA AUTO SENSOR FAUCET  
**COMPANY:** TBD  
**STYLE/PATTERN:** TBD  
**COLOR:** TBD  
**REMARKS:** TBD
- E** ADA POWER HAND DRYER  
**COMPANY:** TBD  
**STYLE/PATTERN:** TBD  
**COLOR:** TBD  
**REMARKS:** TBD
- F** TRASH RECEPTACLE  
**COMPANY:** TBD  
**STYLE/PATTERN:** TBD  
**COLOR:** TBD  
**REMARKS:** TBD
- G** -----  
**COMPANY:** TBD  
**STYLE/PATTERN:** TBD  
**COLOR:** TBD  
**REMARKS:** TBD

**FINISH NOTES:**

- WALL SURFACES BEING PREPARED FOR PAINT SHALL HAVE PAINT APPLIED IN ACCORDANCE WITH MANUFACTURER'S SPECIFICATIONS. PROVIDE A MINIMUM OF (2) FINISH COATS OVER PRIME AS REQUIRED.
- PAINT ALL DRYWALL CEILINGS AND BOTTOMS OF SOFFITS WITH (2) COATS OF FLAT PAINT.
- IF REQUIRED, CONTRACTOR TO PROVIDE ALL TEST DATA FOR MATERIALS SPECIFIED TO THE CITY BUILDING DEPARTMENT.
- WHERE CARPETING OCCURS IN DOORWAYS, INSTALLER TO LOCATE SEAM UNDER THE CENTER OF THE DOOR (ALIGNMENT OF PATTERN IS CRITICAL).
- PROVIDE RUBBER REDUCER STRIPS AT FLOOR MATERIAL JUNCTIONS. COLOR TO BE APPROVED BY THE ARCHITECT.
- THE G.C. AND THE CARPET SUB-CONTRACTOR SHALL SUBMIT PRIOR TO PURCHASE AND ORDER OF CARPET GOODS A SEAMING DIAGRAM FOR REVIEW AND APPROVAL. ALL ABUTTING PATTERNED REPEAT CARPET SHALL RUN IN SAME DIRECTION.
- ANY CARPET INSTALLED PRIOR TO OTHER TRADES BEING COMPLETE SHALL PROVIDE ADEQUATE PROTECTION FOR INSTALLED GOODS. THE SUB SHALL HAVE THE EDGES TRIMMED AND SEALED ACCORDING TO THE MANUFACTURER'S SPECIFICATIONS. ANY EDGES NOT SEALED THAT RAVEL WILL BE REPAIRED/REPLACED AT THE SUB-CONTRACTOR'S EXPENSE.
- G.C. TO SUBMIT SAMPLES OF ALL FINISHES TO ARCHITECT FOR APPROVAL.
- HORIZONTAL SEAMS AT WALL COVERING AND CUTTING AT CORNERS ARE NOT ACCEPTABLE. CUTTING TO BE NOT LESS THAN 3" FROM AN INSIDE CORNER, AND NOT LESS THAN 6" FROM AN OUTSIDE CORNER U.O.N.
- G.C. SHALL COORDINATE SANDING AND REPAIRING ALL PERIMETER DRYWALL SILL, SNAW COAT AND REPAIR AS (GENERAL WALL COLOR) U.O.N.
- G.C. SHALL COORDINATE WITH FLOORING SUB ALL REQUIRED FLOOR PREP FOR ALL MATERIALS AND INCLUDE IN PRODUCT COST.

5 SECTION: MILLWORK WALL @ ATM  
3/8"=1'-0"

6 SECTION: MILLWORK WALL @ TV AND SHELF  
3/8"=1'-0"

7 SECTION: MILLWORK WALL AT WOOD PANEL  
3/8"=1'-0"

<p><b>CONTRACTOR:</b> WRIGHT RYAN</p>	<p><b>PROJECT</b></p> <p>GORHAM SAVINGS BANK 118 CONGRESS ST. SUITE A PORTLAND ME</p>	<p><b>COMERCIAL DESIGN</b></p> <p>Boulos Certified Interior Designer 1 (203) 749-1795 1 Cedar Falls Rd Portland, Maine 04101 <a href="http://www.bouloscommercialinteriordesign.com">www.bouloscommercialinteriordesign.com</a></p>	<p><b>TITLE</b></p> <p>REFLECTED CEILING PLAN FINISH PLAN, ENLARGED PLANS, ELEVATIONS, SECTIONS</p> <p><b>SCALE</b> AS NOTED <b>DATE</b> 04-15-2015</p>
---	---	---	---