

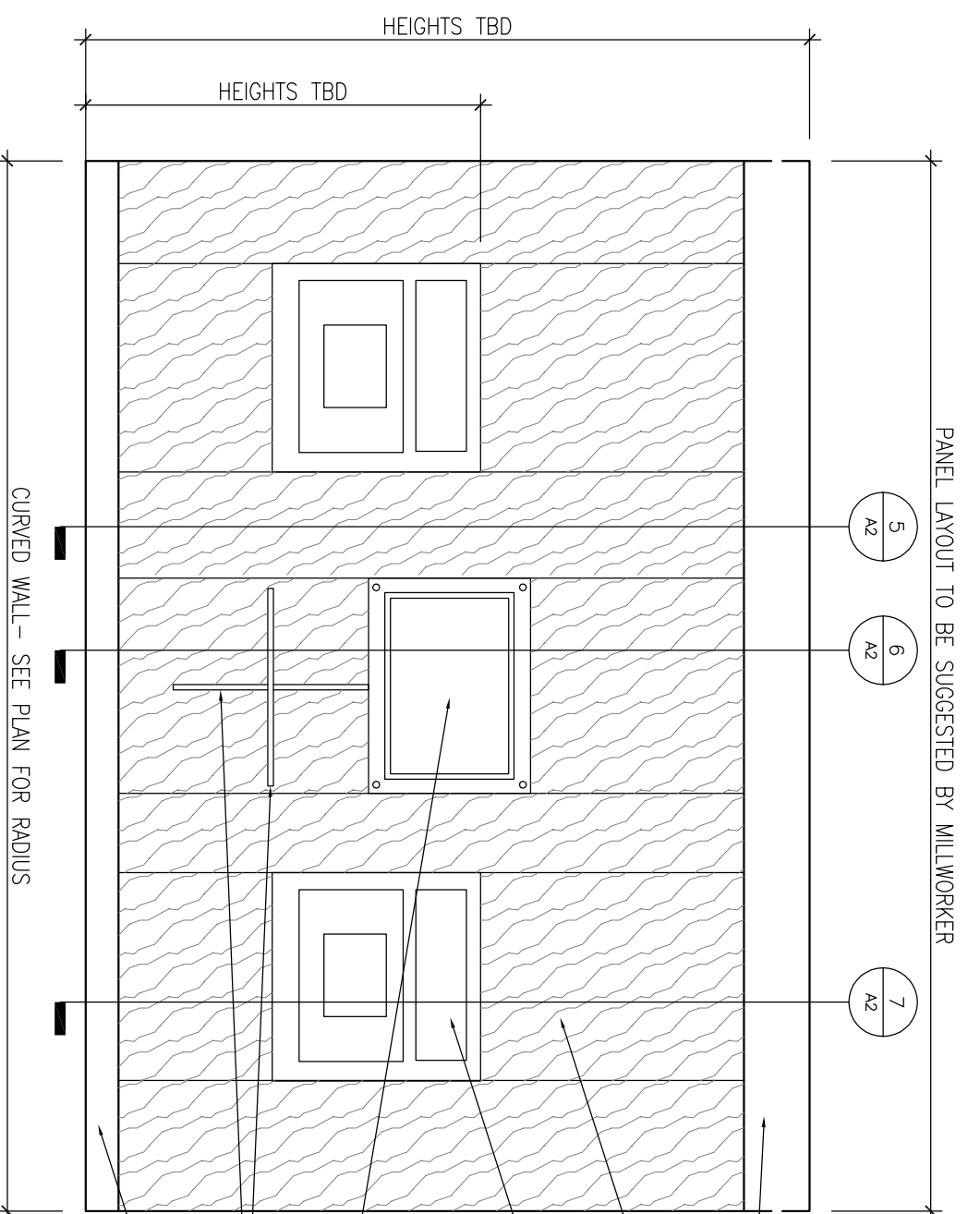
1 CONSTRUCTION PLAN
1/8"=1'-0"

CONSTRUCTION LEGEND:

- OFFICE
[Symbol] ROOM NAME AND NUMBER
- [Symbol] INDICATES EXISTING CORE, SHELL PERIMETER CONDITIONS
- [Symbol] INDICATES NEW WALL CONSTRUCTION
- [Symbol] INDICATES WALL TYPE DESIGNATION - (TYPE 1 U.O.N.) REFER TO DETAILS
- [Symbol] DOOR SWING AND IDENTIFICATION NO., SEE DOOR SCHEDULE.
- [Symbol] INDICATES EXISTING DOOR TO REMAIN
- [Symbol] INTERIOR ELEVATION SYMBOLS
- [Symbol] DETAIL SECTION SYMBOLS
- [Symbol] PROVIDE 3/4" FIRE RATED PLYWOOD (PAINT GRADE) MOUNTED ON 27x4" STUDS 8'-0" SHEETS MOUNTED VERTICALLY OR HORIZONTALLY AS REQUIRED BY SERVER ROOM FIELD LAYOUTS.
- [Symbol] DASHED LINE INDICATES IN WALL 3/4" FIRE RATED PLYWOOD MOUNT BETWEEN STUDS AT REQUIRED LOCATIONS FOR SUPPORT OF AV, FURNITURE, CABINETS/MARKER BOARDS AND/OR ART WORK. PROVIDE ACCESS LOCATION AS REQUIRED BY EQUIPMENT
- [Symbol] FIRE EXTINGUISHER CABINET

CONSTRUCTION NOTES:

1. ALL PARTITIONS ARE TO BE (TYPE 1), U.O.N. (6" ABOVE C.G.)
2. ALL WORK SHALL CONFORM TO THE LATEST EDITION OF THE MAINE STATE BUILDING CODE AND ALL OTHER APPLICABLE CODES AND REGULATIONS.
3. ALL CONTACTS AND ITEMS FOR CLARIFICATION SHALL BE BROUGHT TO THE ATTENTION OF THE ARCHITECT PRIOR TO AFFECTING WORK IN THAT AREA.
4. CONTRACTOR SHALL FIELD VERIFY EXISTING CONDITIONS AND SHALL NOTIFY THE ARCHITECT PRIOR TO COMMENCING WORK. IN WRITING OF ANY DISCREPANCIES AND/OR DAMAGE OF EXISTING BASE. CONTRACTOR SHALL BE RESPONSIBLE FOR EXACT QUANTITY TAKE-OFFS BASED ON FIELD OBSERVATIONS.
5. GENERAL CONTRACTOR SHALL COORDINATE THE LOCATION OF REQUIRED FIRE PROOF ROOMING IN WALLS THAT RECEIVE CABINETS, SHELVING, MAJOR ART WORK, COAT RACK AND SHELVING WITH MILLWORK SUBCONTRACTOR.
6. ALL PLAN DIMENSIONS INDICATED ARE TO FINISHED FACE OF PARTITION, U.O.N.
7. WHERE FIRE-RATED AND TALL HEIGHT PARTITIONS ARE PENETRATED BY STRUCTURAL MEMBERS, DUCTWORK, PIPING, AND CONDUIT, THE Gypsum BOARD SHALL BE SCRUBED TO FIT TIGHT AGAINST THE PENETRATING ITEM AND SEALED WITH THE APPROPRIATE SEALANT (RED) COORDINATE WITH MECHANICAL AND ELECTRICAL WORK AND DETAILS.
8. ANY EXISTING PARTITIONS, COLUMNS OR CORE WALLS INDICATED TO REMAIN, WHICH ARE DAMAGED OR UNUSABLE SHALL BE DEMOLISHED AND RECONSTRUCTED TO MATCH ORIGINAL CONDITIONS INCLUDING REMOVED OUTLET LOCATIONS. THE G.C. SHALL BE RESPONSIBLE TO INSTALL ANY MISSING ONE ON PERIMETER ABOVE & BELOW WINDOWS AND ALL COLUMNS.
9. ALL EXPOSED STRUCTURAL STEEL AND BRACING SHALL REMAIN AS REQUIRED PER LOCAL CODE. PATCH FIRE PROOFING AS REQUIRED. PROVIDE ALLOWANCES.
10. THE G.C. SHALL VERIFY THE LOCATIONS OF ALL EXISTING FIRE ALARM CALL BOXES, PULL STATIONS, EXTINGUISHERS, FIRE HOSE VALVE CABINETS, STROBES, ETC. AND SHALL RELOCATE AS REQUIRED WHERE IN CONFLICT WITH PARTITIONS AND/OR WHERE DEMOLITION OCCURS AND TO ACCOMMODATE NEW LAYOUT. SEE ENGINEERING DOCUMENTS.
11. THE G.C. SHALL COORDINATE WITH DOOR AND GNB SIBS FOR FIT OF NEW FRAMES AT PARTITIONS SO NO GAPS OCCUR. SEE DOOR SCHEDULE FOR FRAME SPECIFICATION FOLLOW ALL MANUFACTURER GUIDELINES FOR INSTALLATION AND TOLERANCE.

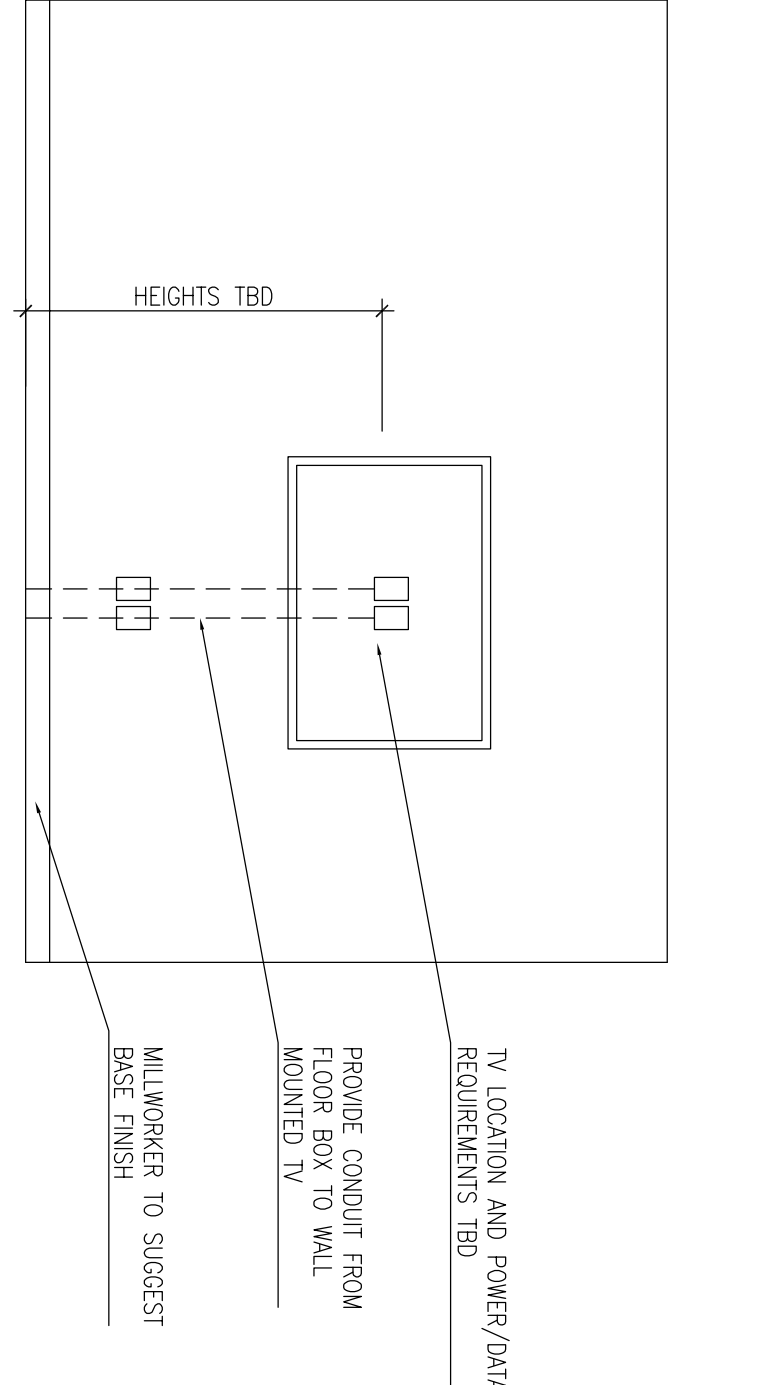


2 ELEVATION: ATM FEATURE WALL
3/8"=1'-0"

DOOR SCHEDULE:

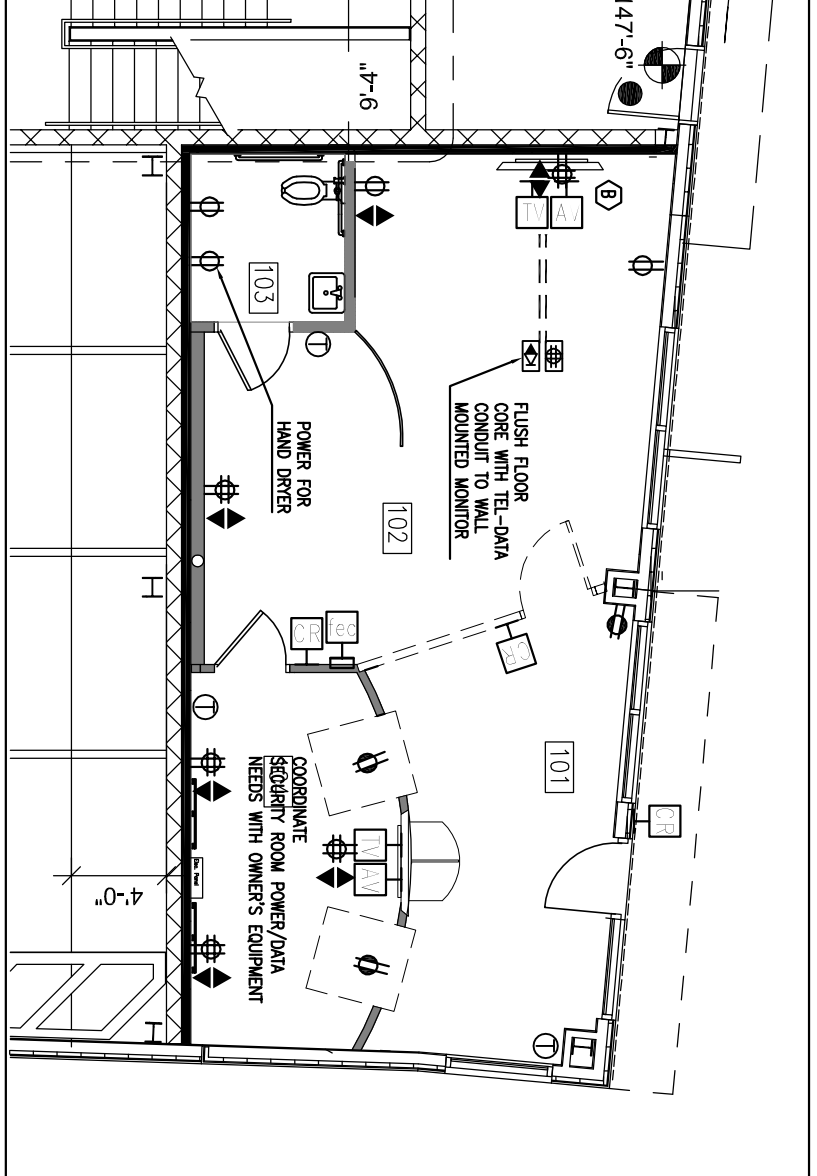
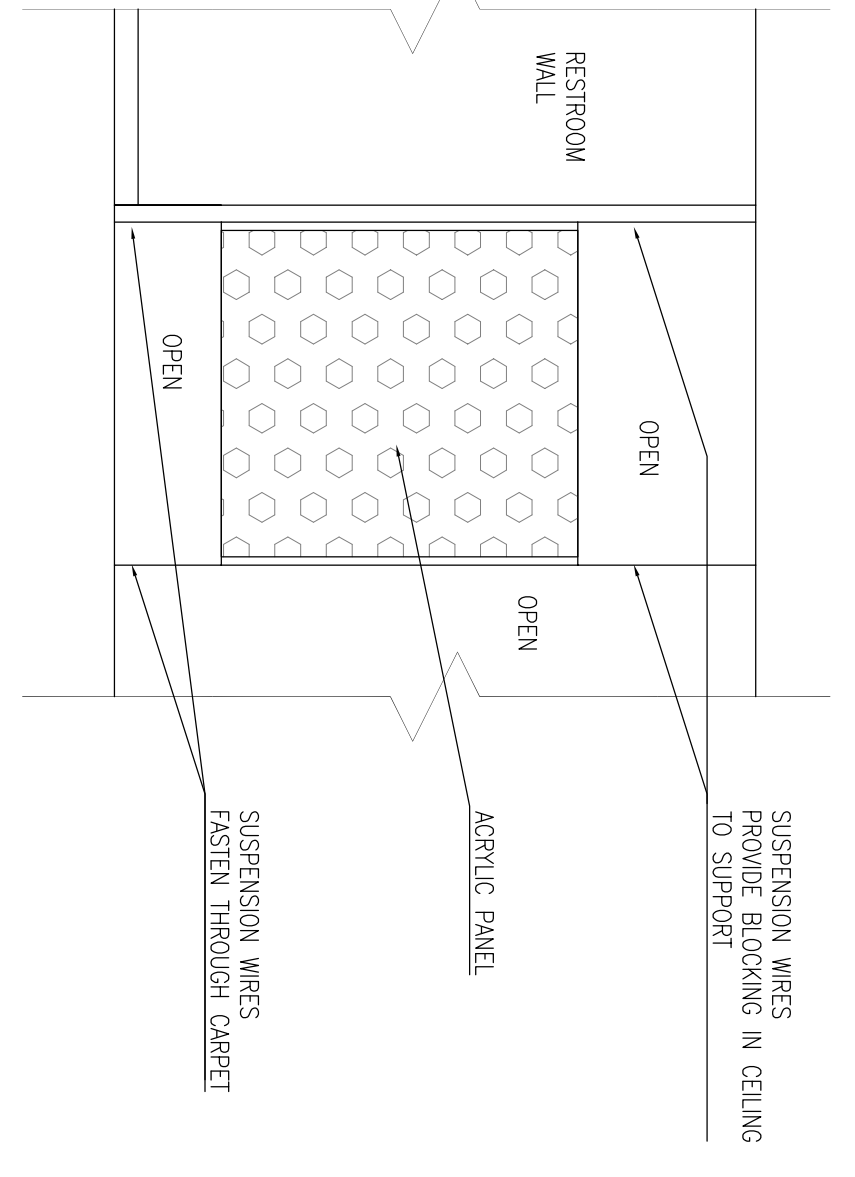
- DOOR # 1: 3x7" WOOD VENEER DOOR LOOK-SET HARDWARE STAINLESS STEEL / CHROME
- DOOR # 2: 3x7" STEEL DOOR PAINTED FINISH PROVIDE TOE KICK PLATE ON OUTSIDE OF DOOR COORDINATE WITH OWNER SECURITY VENDOR FOR POWER REQUIREMENTS STAINLESS STEEL / CHROME
- DOOR # 3: EXISTING GLASS DOOR PROVIDE CARD READER HARDWARE COORDINATE WITH OWNER SECURITY VENDOR FOR POWER REQUIREMENTS
- DOOR # 4: DOOR BY OTHERS CARD READER HARDWARE COORDINATE WITH OWNER SECURITY VENDOR AND FURNITURE WALL SYSTEM VENDOR FOR POWER REQUIREMENTS

3 ELEVATION: ATM FEATURE WALL
3/8"=1'-0"



4 ELEVATION: WALL MOUNTED MONITOR
3/8"=1'-0"

5 ELEVATION: PREFAB KIT
3/8"=1'-0"



6 TEL/DATA LOCATION PLAN
1/8"=1'-0"

ELECTRIC/TELEPHONE LEGEND:

- NOTE: ALL EXISTING OUTLETS SHALL REMAIN UNLESS OTHERWISE NOTED INCLUDING POWER, TEL/DATA, SWITCHING, A.V. ETC.
- [Symbol] WALL MOUNTED DUPLEX ELECTRICAL OUTLET MOUNT 18" AFF UNLESS OTHERWISE NOTED
 - [Symbol] WALL MOUNTED DEDICATED CIRCUIT ELECTRICAL OUTLET MOUNT 18" AFF UNLESS OTHERWISE NOTED
 - [Symbol] WALL MOUNTED QUADRAPLEX ELECTRICAL OUTLET MOUNT 18" AFF UNLESS OTHERWISE NOTED
 - [Symbol] WALL MOUNTED VOICE/DATA LOCATION: THE G.C. SHALL PROVIDE SINGLE GANG BOX AND PLASTER RING WITH CONDUIT TO PLenum AND PULL STRING FOR FUTURE CABELING.
 - [Symbol] FLUSH FLOOR CORE POWER (QUAD) AND COMMUNICATION LOCATION TO BE BUILDING STANDARD POKE THRU DEVICE. SEE PLAN FOR LOCATIONS AND ENGINEERING FOR SPECS. LOCATE W/ THE ARCHITECT, THE G.C. SHALL COORDINATE AND INSTALL TABLE MOUNT UNIT (SUPPLIED BY AV CONTRACTOR) INTO FURNITURE TABLES.
 - [Symbol] CARD READER: SINGLE GANG JUNCTION BOX WITH PULL STRING COORDINATE ALL REQUIREMENTS INCLUDING WITH ENGINEERING DRAWINGS. CABLE BY OTHERS
 - [Symbol] AUDIO VISUAL: SINGLE OR DOUBLE GANG JUNCTION BOX WITH PULL STRING COORDINATE ALL REQUIREMENTS INCLUDING CONDUIT WITH ENGINEERING DRAWINGS. CABLE BY OTHERS
 - [Symbol] TELEVISION: SINGLE GANG JUNCTION BOX WITH PULL STRING COORDINATE COAX CABLE REQUIREMENTS INCLUDING CONDUIT WITH ENGINEERING DRAWINGS. CABLE BY OTHERS
 - [Symbol] FIRE STROBE LOCATION: SINGLE GANG JUNCTION BOX WITH REQUIRED CABELING. SEE ENGINEERING FOR REQUIREMENTS INCLUDING CONDUIT.
 - [Symbol] FIRE EXTINGUISHER CABINET LOCATION: EXISTING TO REMAIN.
 - [Symbol] LIGHT SWITCH LOCATION: EXISTING TO REMAIN.
 - [Symbol] THERMOSTAT LOCATION: EXISTING TO REMAIN.

ELECTRIC/TELEPHONE NOTES:

1. THE INTENT OF THIS DRAWING IS TO SHOW LOCATIONS OF ELECTRICAL AND VOICE/ DATA DEVICES ONLY. REFER TO ELECTRICAL ENGINEERING DOCUMENTS FOR WIRING/SCHEDULING OF ALL ELEMENTS. ARCHITECTURE AND ENGINEERING FOR PRICING AND COORDINATION.
2. PRIOR TO ORING THE S488 FOR ELECTRIC AND DATA LOCATIONS, THE CONTRACTOR SHALL PROVIDE A COORDINATION DRAWING FOR THE ARCHITECT'S REVIEW. IT SHALL BE DONE USING LOCATIONS AS SHOWN ON THE PLAN, THE REQUIREMENTS OF THE SYSTEMS FURNITURE AND FREE STANDING DESKS, CLEARANCE OF EXISTING STRUCTURAL STEEL AND EXISTING OR NEW MECHANICAL, ELECTRICAL AND PLUMBING/FIRE PROTECTION CONSTRUCTION.
3. GENERAL CONTRACTOR SHALL COORDINATE WITH ALL VENDORS INCLUDING, BUT NOT LIMITED TO, TELEPHONE/DATA, AUDIO/VISUAL, WIRELESS AND SECURITY CONTRACTORS.
4. SEE ENGINEERING FOR ALL LOCATIONS OF LIFE SAFETY RELATED EQUIPMENT SUCH AS PULL STATIONS, FIRE STROBES, ETC. RELOCATE WHERE NECESSARY DUE TO LAYOUT. ARCHITECT RESERVES THE RIGHT TO REVIEW AND MOVE PRIOR TO INSTALLATION AT NO ADDITIONAL COST TO THE TENANT. G.C. COORDINATE THE MEETING FOR REVIEW.
5. ALL SWITCHING AND RECEPTACLES SHALL BE WHITE IN COLOR. THE G.C. TO SUBMIT SAMPLES TO ARCHITECT FOR APPROVAL.
6. GANG ALL MULTIPLE SWITCHES AT ONE LOCATION, TOGETHER WITH A COMMON FACE PLATE.
7. ALL WALL MOUNTED OUTLETS SHALL BE INSTALLED AT 18" A.F.F. UNLESS NOTED OTHERWISE.
8. ALL WALL MOUNTED OUTLETS SHOWN BACK-TO-BACK ON PLANS SHALL BE INSTALLED OFF-SET TO PREVENT SOUND TRANSMISSION.
9. ALL WALL MOUNTED SWITCHES SHALL BE INSTALLED AT 48" A.F.F. TO MEET ADA/ANS UNLESS NOTED OTHERWISE.