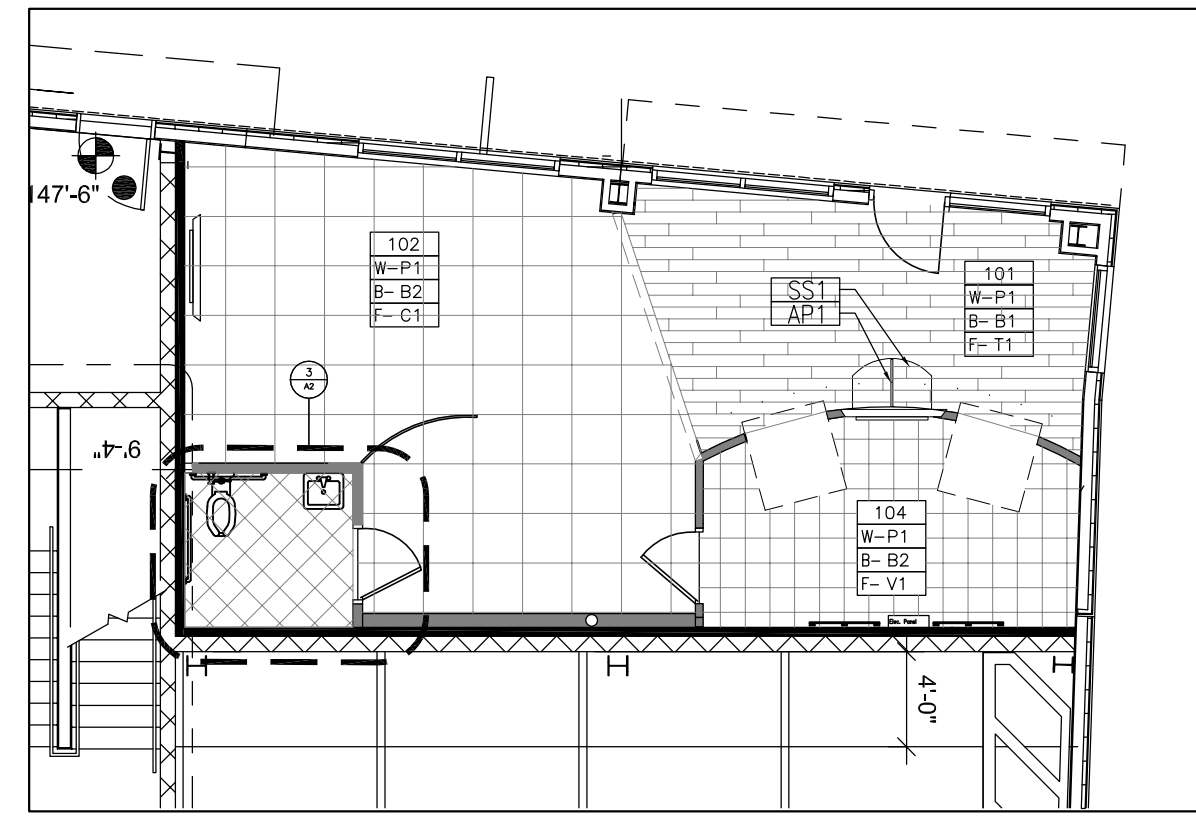
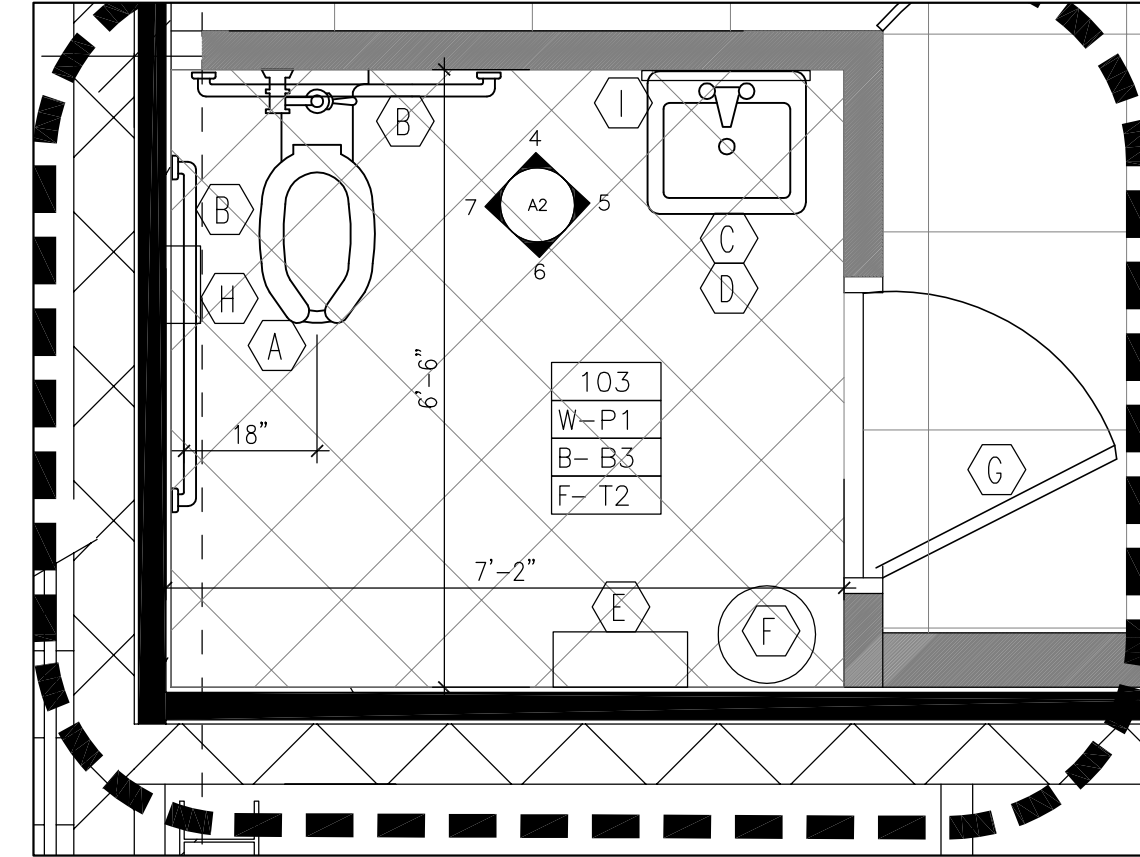


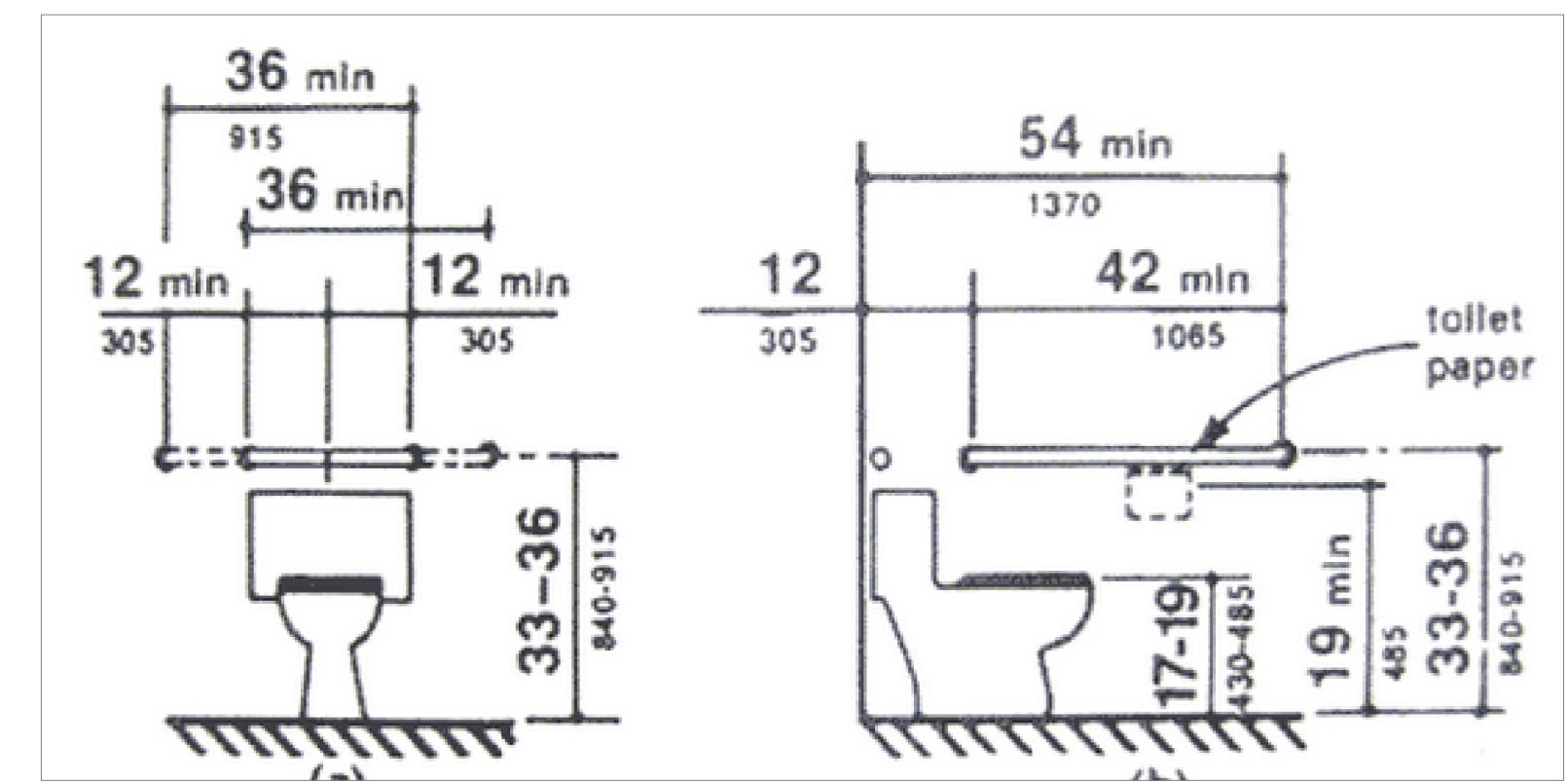
1 REFLECTED CEILING PLAN  
1/8"=1'-0"



2 FINISH PLAN  
1/8"=1'-0"



3 ENLARGED PLAN: RESTROOM FINISHES  
1/2"=1'-0"



4 ELEVATION: ADA RESTROOM GUIDE  
3/8"=1'-0"

CEILING LEGEND:

- ACOUSTICAL SUSPENSION CEILING SYSTEM, ARMSTRONG ULTIMA 1912A - BEVELED TEGULAR SILHOUETTE XL 9/16" Min. NRC rating 0.70, Min. CAC 35
- DRYWALL CEILING (2) COATS FLAT CEILING WHITE PAINT
- PROVIDE SEPARATE SWITCH FOR EACH LIGHT FIXTURE TYPE WITH A GANG COVER PLATE. NOTE: SEE ENGINEERING FOR LOCATION, SPECIFICATION AND ALL REQUIREMENTS.
- X-1 (SINGLE FACE CEILING - NO ARROW)

LIGHT FIXTURES

LT-1	2X2 DIRECT/INDIRECT RECESSED FIXTURE	RECESSED LUMINAIRE WITH REGRESSED ACRYLIC LENS AND WITH INTEGRAL LED 0-10V DIMMING DRIVER FINELITE HIGH PERFORMANCE RECESSED #HPR-A-2X2-DCO-LED-HO-3500K-120V-SC-C2 4"H X 24"W X 24"L
LT-2	2X4 DIRECT/INDIRECT SURFACE MOUNTED	
LT-3	6" LED OPEN DOWNLIGHT	PRESCOLITE LITEFRAME LFL6LEDG4-(VOLT) 0-10V DIMMING TRIM: 6LFL6LEDG4-35K-SEMI DIFFUSE-WHITE
LT-4	LED TAPE WALL GRAZER	

CEILING NOTES:

- G.C. TO COORDINATE AND NOTIFY ARCHITECT FOR ANY CLEARANCE ISSUES FOR LIGHTING, HVAC, SPRINKLER, ETC. RELOCATE AS REQUIRED.
- FOR FURTHER INFORMATION ON LIFE SAFETY SYSTEMS REFER TO THE ELECTRICAL AND FIRE PROTECTION DRAWINGS.
- THE G.C. SHALL COORDINATE WITH ALL REQUIRED SUBS TO RELOCATE SYSTEM ABOVE CEILING AT ALL REQUIRED RAISED CEILING AREAS (IE - COVES, ETC.) SHALL BE COORDINATED BY THE G.C. AND SHALL HAVE ALL HVAC, PIPING, ETC. MOVED AS NEEDED. COORDINATE THIS WORK WITH THE BUILDING RULES AND REGULATIONS.
- ALL FIXTURES AT CONFERENCE TABLE TO BE ON DIMMING SYSTEM, COORDINATE ALL SWITCHING WITH ELECTRICAL PLANS. ALL VARYING LIGHT FIXTURE TYPES SHALL BE SWITCHED SEPARATE, UNDER SINGLE COVER PLATE.
- LEVEL CEILING TO WITHIN 1/8" IN 12 FEET IN ANY DIRECTION. LEVEL WITH HANGER WIRE TAUT AND PLUMB, WITHOUT KINKING OR BENDING HANGER WIRES. CEILING HEIGHT SHALL MATCH EXISTING BLDG STANDARD AND SHALL TIE INTO EXISTING PERIMETER METAL SOFFIT AS REQUIRED UNLESS OTHERWISE NOTED.
- SPRINKLER CONTRACTOR SHALL MODIFY AND/OR RELOCATE SPRINKLER MAINS, BRANCHES AND HEADS TO COORDINATE WITH ARCHITECTURAL REFLECTED CEILING PLANS AND MECHANICAL AIR DISTRIBUTION PLANS TO PROVIDE COVERAGE PER TENANT SPECIFICATIONS. CENTER HEADS IN 2x2 TILE - TYP.
- REFERENCE ENGINEERING DRAWINGS FOR EXIT SIGN, STROBES, T-STATS AND SPRINKLER LOCATIONS ARCHITECT TO APPROVE ALL LOCATIONS PRIOR TO INSTALLATION. ALL SWITCHING, T-STATS AND STROBES SHALL ALIGN VERTICALLY AND SHALL BE INSTALLED LEVEL.
- IT IS THE RESPONSIBILITY OF THE G.C. AND ALL RELATED SUBS TO MAKE SURE ALL LIGHT FIXTURES ARE ORDERED WITH THE PROPER TRIMS PER THE REQUIRED CEILING TYPE. ALL ELECTRICAL SUBS SHALL RECEIVE ARCHITECTURAL DOCUMENTS AS WELL AS ENGINEERING AND BOTH ARE TO BE INCLUDED IN TOTAL PRICE FOR THIS PROJECT. THE G.C. WILL BE RESPONSIBLE TO COORDINATE ANY DISCREPANCIES BETWEEN DOCUMENTS PRIOR TO FINAL BIDS.
- WHERE APPLICABLE, IN MEETING ROOMS AND CONFERENCE ROOMS, ALIGN HORN AND STROBE (FIRE PROTECTION DEVICES) WITH LIGHT SWITCH, SO THAT FIRE PROTECTION DEVICES ARE NOT LOCATED IN THE MIDDLE OF THE WALL. CONFIRM LOCATIONS OF SUCH DEVICES WITH ARCHITECT PRIOR TO INSTALLATION.

FINISH LEGEND:

FINISH	ROOM NO.	FLOOR MAT'L	COMPANY	STYLE/PATTERN	COLOR	REMARKS
EX						EXISTING FINISHES TO REMAIN
C1	CARPET TILE OFFICE SPACE		INTERFACE	SEW STRAIGHT 142002500	HEM 102404	USE WITH BASE B1
T1	TILE FLOOR ENTRYWAY		DALTILE	FOREST PARK (FP 99)	BLACKWOOD 99	INSTALL BRICK-JOINT PATTERN
T2	TILE FLOOR RESTROOM		DALTILE	DIAMANTE (PO 21)	GRIGIO 21	
V1	STATIC DISSIPATIVE VINYL COMPOSITE TILE		ARMSTRONG	SDT FOSSIL GRAY 51956	IT CLOSET FLOORING	

BASE FINISHES

B1	VINYL BASE	COMPANY: JOHNSONITE	STYLE: 6" MILLWORK PROFILE MONARCH	COLOR: BONE WHITE 79 W	REMARKS:
B2	VINYL BASE	COMPANY: JOHNSONITE	STYLE: 4" COVE	COLOR: 29 MOODROCK WG	REMARKS:
B3	TILE BASE IN RESTROOM	COMPANY: DALTILE	STYLE: SEMI-GLOSS GROUP 1	COLOR: 4.25" X 6" TILE BASE	REMARKS: *FLAT TOP COVE AT WALL TILE A-3461 *SANITARY COVE AT PAINTED WALLS A-3419T ARCTIC WHITE

WALL FINISHES

WT1	WALL TILE	COMPANY: DALTILE	STYLE: 4.25" X 4.25"	COLOR: ARCTIC WHITE 0190	FINISH: SEMI-GLOSS FIELD TILE	REMARKS: RADIUS BULLNOSE AT TOP TILE ROW USE MATCHING WHITE GROUT
P1	PAINT	COMPANY: BENJAMIN MOORE	COLOR: TBD	FINISH: EGG-SHELL	REMARKS: TBD	
P2	PAINT	COMPANY: BENJAMIN MOORE	COLOR: TBD	FINISH: EGG-SHELL	REMARKS: TBD	

MILLWORK FINISHES

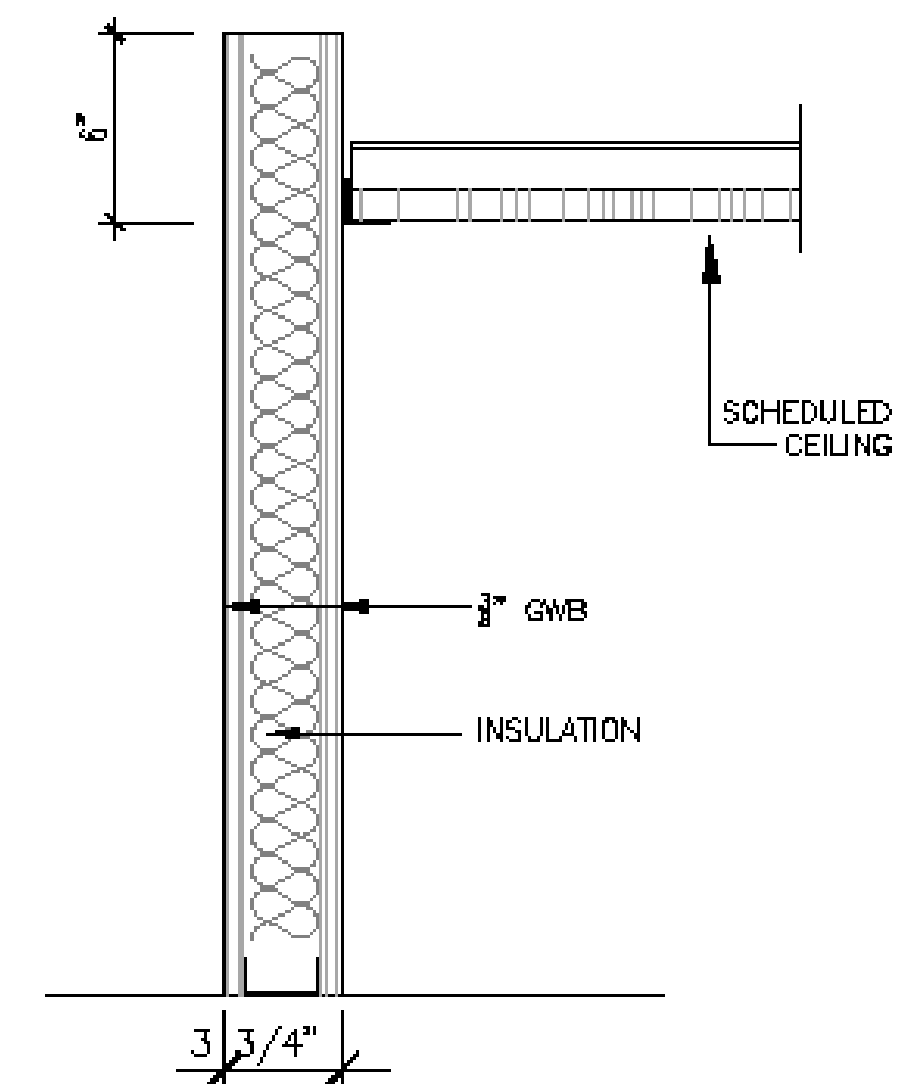
PL1	3FORM PANELS	COMPANY: 3form	PATTERN/STYLE: READY-TO-GO	COLOR: TBD	REMARKS: TBD
M1	MILLWORK PANELS	COMPANY: TBD	SPECIES/STAIN: TBD	COLOR: TBD	REMARKS: PROVIDE SAMPLE FOR ARCHITECT'S APPROVAL
SS1	SOLID SURFACE	COMPANY: TBD	PATTERN/STYLE: TBD	COLOR: TBD	REMARKS: TBD

RESTROOM FIXTURES AND ACCESSORIES:

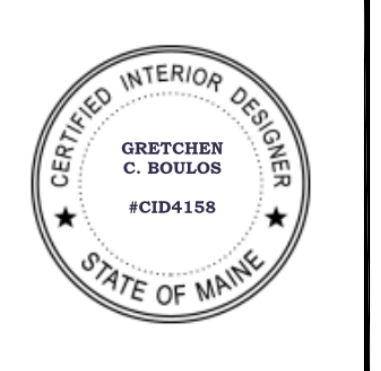
A	ADA FLOOR MOUNTED TOILET	COMPANY: KOHLER	STYLE/PATTERN: HIGHLINE CLASSIC	COLOR: K-3658-0	REMARKS: WHITE
B	ADA WALL MOUNTED GRAB BARS	COMPANY: BOBRICK	STYLE/PATTERN: B-6806	COLOR: SATIN FINISH	REMARKS: FOLLOW ADA MOUNTING HEIGHT GUIDES
C	ADA WALL MOUNTED SINK	COMPANY: KOHLER	STYLE/PATTERN: PINOIR K-2035-1	COLOR: WHITE	REMARKS: FOLLOW ADA MOUNTING HEIGHT GUIDES
D	ADA FAUCET	COMPANY: KOHLER	STYLE/PATTERN: FORTE K-10216-4	COLOR: CHROME	REMARKS: COORDINATE WITH SINK
E	ADA POWER HAND DRYER	COMPANY: BOBRICK	STYLE/PATTERN: B-7120	COLOR: STAINLESS	REMARKS: FOLLOW ADA MOUNTING HEIGHT GUIDE
F	TRASH RECEPTACLE	COMPANY: TBD	STYLE/PATTERN: TBD	COLOR: TBD	REMARKS: TBD
G	CLOTHES HOOK	COMPANY: BOBRICK	STYLE/PATTERN: B-211	COLOR: STAINLESS	REMARKS: (1) ON BACK OF RESTROOM DOOR
H	SURFACE MOUNT TOILET TISSUE DISPENSER	COMPANY: BOBRICK	STYLE/PATTERN: B-2840	COLOR: STAINLESS	REMARKS: FOLLOW ADA MOUNTING HEIGHT GUIDES
I	ADA WALL MIRROR	COMPANY: BOBRICK	STYLE/PATTERN: B-293	COLOR: TBD	REMARKS: TBD

FINISH NOTES:

- WALL SURFACES BEING PREPARED FOR PAINT SHALL HAVE PAINT APPLIED IN ACCORDANCE WITH MANUFACTURER'S SPECIFICATIONS. PROVIDE A MINIMUM OF (2) FINISH COATS OVER PRIME AS REQUIRED.
- PAINT ALL DRYWALL CEILINGS AND BOTTOMS OF SOFFITS WITH (2) COATS OF FLAT PAINT.
- IF REQUIRED, CONTRACTOR TO PROVIDE ALL TEST DATA FOR MATERIALS SPECIFIED TO THE CITY BUILDING DEPARTMENT.
- WHERE CARPETING OCCURS IN DOORWAYS; INSTALLER TO LOCATE SEAM UNDER THE CENTER OF THE DOOR (ALIGNMENT OF PATTERN IS CRITICAL).
- PROVIDE RUBBER REDUCER STRIPS AT FLOOR MATERIAL JUNCTIONS, COLOR TO BE APPROVED BY THE ARCHITECT.
- THE G.C. AND THE CARPET SUB-CONTRACTOR SHALL SUBMIT PRIOR TO PURCHASE AND ORDER OF CARPET GOODS A SEAMING DIAGRAM FOR REVIEW AND APPROVAL. ALL ABUTTING PATTERNED REPEAT CARPET SHALL RUN IN SAME DIRECTION.
- ANY CARPET INSTALLED PRIOR TO OTHER TRADES BEING COMPLETE SHALL PROVIDE ADEQUATE PROTECTION FOR INSTALLED GOODS. THE SUB SHALL HAVE THE EDGES TRIMMED AND SEALED ACCORDING TO THE MANUFACTURERS SPECIFICATIONS. ANY EDGES NOT SEALED THAT RAVEL WILL BE REPAIRED/REPLACED AT THE SUB-CONTRACTORS EXPENSE.
- G.C. TO SUBMIT SAMPLES OF ALL FINISHES TO ARCHITECT FOR APPROVAL.
- HORIZONTAL SEAMS AT WALL COVERING AND CUTTING AT CORNERS ARE NOT ACCEPTABLE. CUTTING TO BE NOT LESS THAN 3" FROM AN INSIDE CORNER, AND NOT LESS THAN 6" FROM AN OUTSIDE CORNER U.O.N.
- G.C. SHALL COORDINATE SANDING AND REPAINTING ALL PERIMETER DRYWALL SILL, SKIM COAT AND REPAINT AS (GENERAL WALL COLOR) U.O.N..
- G.C. SHALL COORDINATE WITH FLOORING SUB ALL REQUIRED FLOOR PREP FOR ALL MATERIALS AND INCLUDE IN PROJECT COST.



NEW WALLS TO BE 3/8" GWB (1) LAYER EACH SIDE. INSULATED AND 6" ABOVE FINISHED CEILING.



PROJECT  
GORHAM SAVINGS BANK  
118 CONGRESS ST.  
SUITE B  
PORTLAND ME

CONTRACTOR:  
WRIGHT RYAN

TITLE  
REFLECTED CEILING PLAN  
FINISH PLAN, ENLARGED PLANS,  
ELEVATIONS, SECTIONS  
SCALE AS NOTED  
DATE 05-18-2015