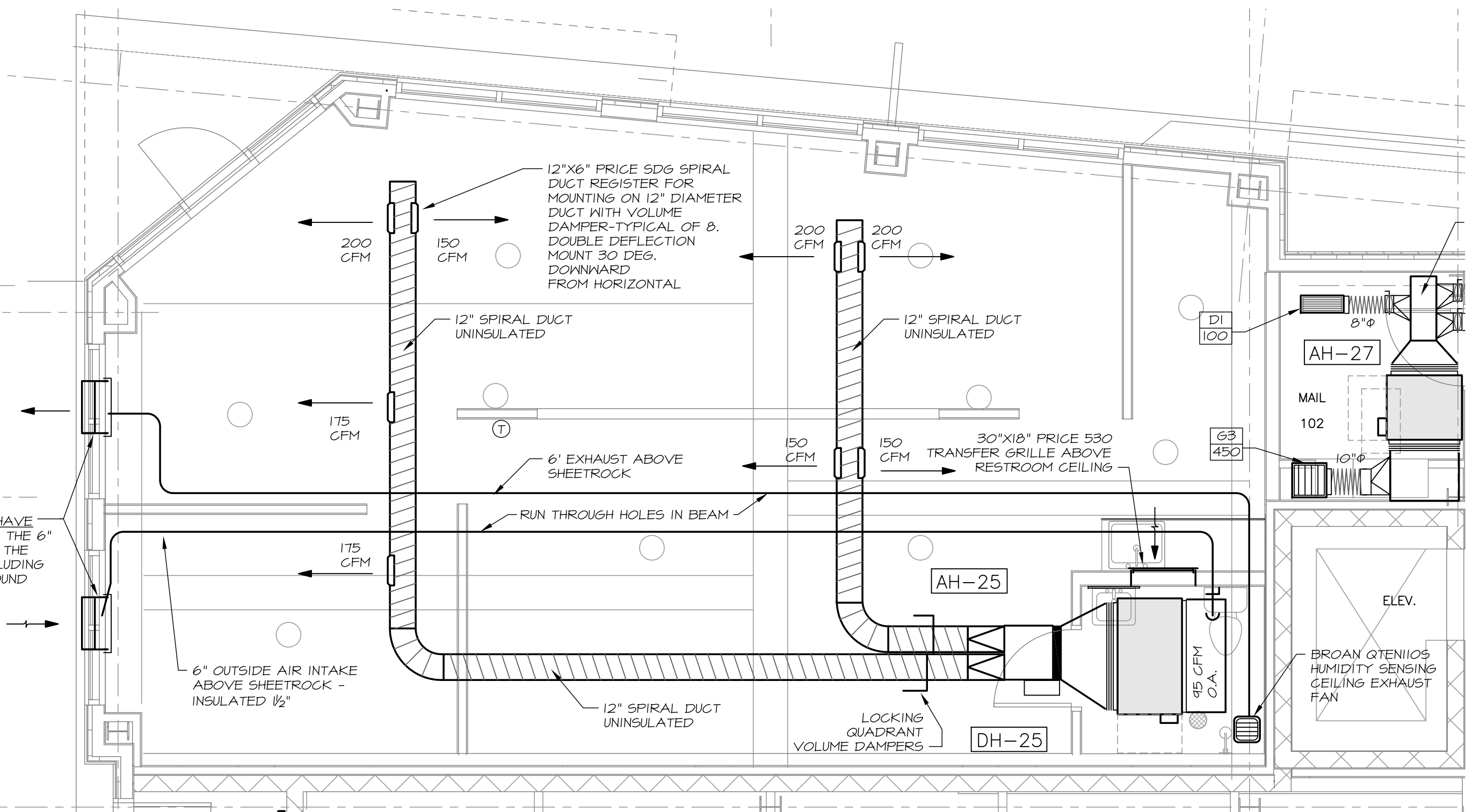



NOTE - DO WHAT YOU HAVE TO IN ORDER TO MAKE THE 6" ROUND DUCTS TIE INTO THE EXISTING LOUVER- INCLUDING
 - TRANSITION TO 5" ROUND
 - 2"X10" DUCT
 - 6" OVAL DUCT



DRAWING		118 ON MONJOY HILL - TENANT A DUCTWORK		DRAWING: SKMI.1	
<input type="checkbox"/> FIELD ORDER	<input type="checkbox"/> CHANGE ORDER	<input type="checkbox"/> SKETCH			
DRAWN BY K.F.M.	CHECKED BY K.F.M.	DATE 02.12.2015			
SCALE NOTED	SHEET: 1	OF: 1			
		 MECHANICAL SYSTEMS ENGINEERS ROYAL RIVER CENTER, UNIT #10 10 FOREST FALLS DRIVE YARMOUTH, MAINE 04096 FACEBOOK: MECHANICAL SYSTEMS ENGINEERS 207-846-1441 © COPYRIGHT 2015			