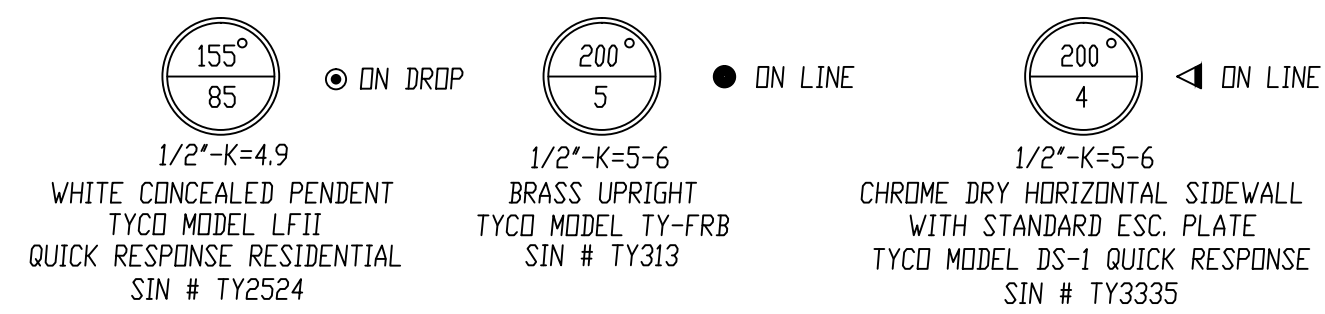


FIRE SPRINKLER PLAN - SECOND FLOOR PIPING

SCALE: 1/8"=1'-0"
 AREA PROTECTED: 9003 SQ.FT.
 FINISH FLOOR ELEVATION: 160'-0"



NOTE: ALL SECOND FLOOR GYPSUM CEILINGS @ 10'-1" A.F.F. UNLD.
 ALL SECOND FLOOR BATH/PANTRY/CLOSET GYP CLGS @ 8'-0" A.F.F.
 ALL SECOND FLOOR KITCHEN GYPSUM @ 9'-0" A.F.F.

GENERAL NOTES

- ALL EXPOSED SPRINKLER PIPE TO BE PAINTED RED
- ALL WIRING TO BE DONE BY OTHERS
- ALL DIMENSIONS ARE SHOWN FOR GENERAL LOCATION OF SPRINKLER HEADS; PIPING MAY VARY TO SUIT ACTUAL FIELD CONDITIONS.
- OCCUPANCY DESCRIPTION AND CLASSIFICATION: GROUND FLOOR PARKING GARAGE ORDINARY II NFPA 13 2007 GROUND FLOOR RETAIL SPACES ORDINARY II NFPA 13 2007 MAXIMUM HEIGHT OF STORAGE NOT TO EXCEED 8'-0"
- 2ND-4TH FLOOR DWELLING UNITS-NFPA 13R 2007 RESIDENTIAL, LIGHT HAZARD
- ACoustICAL CEILING TILE (ACT) TO BE LISTED NON-COMBUSTIBLE WITH UL FLAME SPREAD OF LESS THAN 25.
- PENDANT SPRINKLER HEADS INSTALLED IN ACCUSTICAL CEILING TILES TO BE CENTERLINE OF TILE.
- = INDICATES HYDRAULIC REFERENCE POINTS.
- F.F. ⊥ INDICATES FINISH FLOOR UP TO CENTERLINE OF PIPE.
- CLG ⊥ INDICATES CEILING DN TO CENTERLINE OF PIPE.
- NAS = NO AUTOMATIC SPRINKLER
- FCVA = FLOOR CONTROL VALVE ASSEMBLY
- ✕ = INDICATES STEEL PENETRATION LOCATIONS.

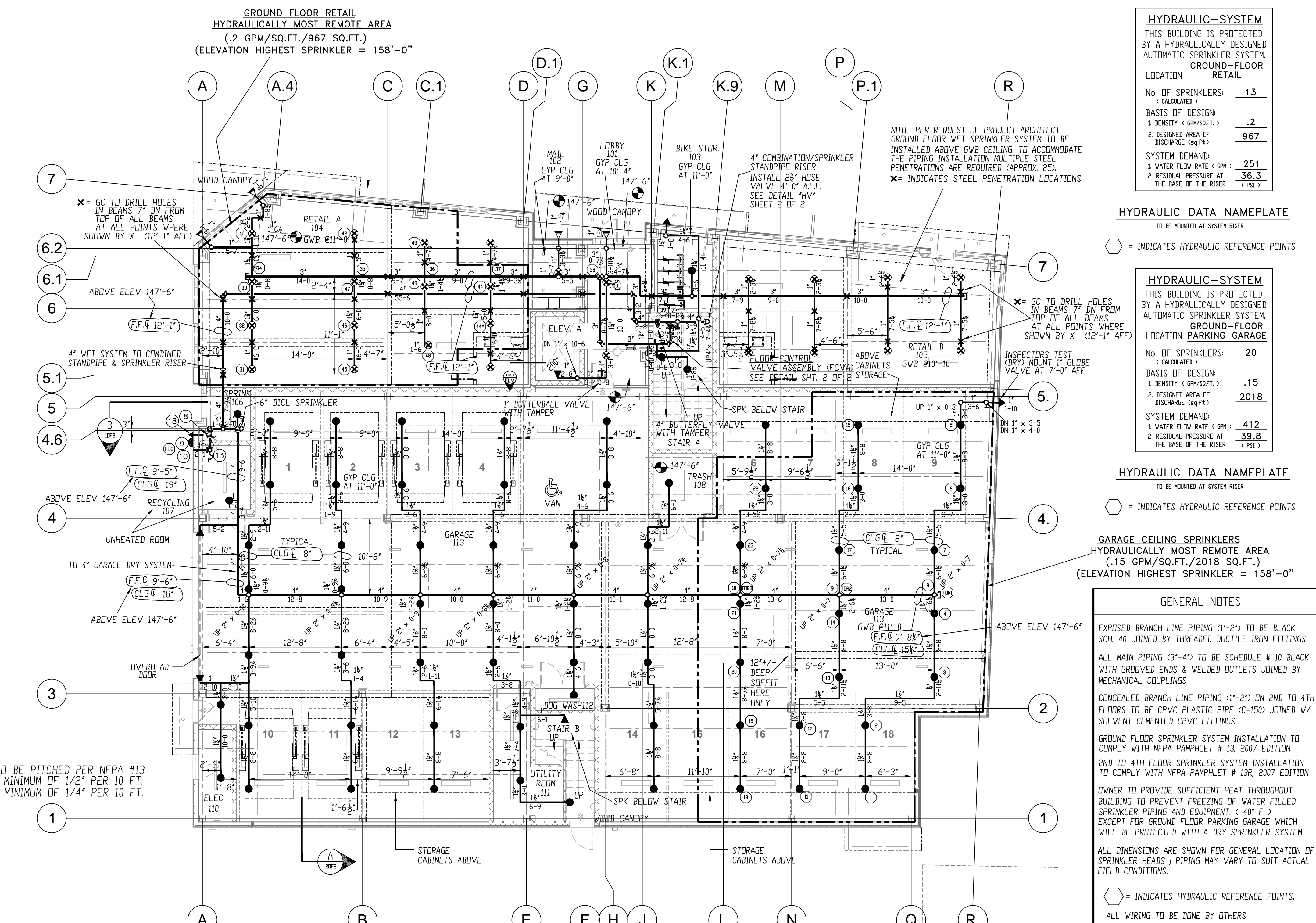
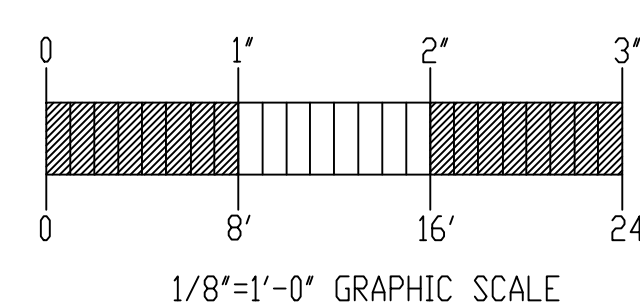
- SPRINKLERS ARE NOT REQUIRED IN THE FOLLOWING AREAS AS PER NFPA 13R 2007
- 1. BATHROOMS NOT EXCEEDING 55 SQ. FT. WITH NON-COMBUSTIBLE CONSTRUCTION & FIXTURES
- 2. CLOTHES CLOSETS, LINEN CLOSETS, AND PANTRIES WITHIN THE DWELLING UNITS WHERE THE AREA OF THE SPACE DOES NOT EXCEED 24 SQ. FT. AND WITH THE LEAST DIMENSION NOT EXCEEDING 3 FT., WITH THE WALLS AND CEILINGS SURFACED WITH NON-COMBUSTIBLE OR LIMITED-COMBUSTIBLE MATERIALS AS DEFINED BY NFPA 220.
- 3. ATTICS, PENTHOUSES, EQUIPMENT ROOMS, CRAWL SPACES, FLOOR/CEILING SPACES, ELEVATOR SHAFTS, AND ANY OTHER CONCEALED SPACES THAT ARE NOT USED OR INTENDED FOR LIVING PURPOSES OR STORAGE.

LEGEND

- ① 4" BUTTERFLY VALVE WITH TAMPER SWITCH NO.
- ② 4" AMES COLD 200M-BFG BACKFLOW PREVENTER W/ GROOVED BUTTERFLY VALVES NO.
- ③ 4" TYCO DRY PIPE VALVE W/ TRIM (MODEL DPV-1 GXG)
- ④ 6" UNI-FLANGE FOR DIOL PIPE (BY OTHERS)
- ⑤ 2" ANGLE VALVE (DRY SYSTEM MAIN DRAIN) PIPED TO OUTSIDE DISCHARGE
- ⑥ 2" TEST & MAIN DRAIN VALVE PIPE & CONNECT TO MAIN DRAIN ABOVE
- ⑦ FURNAS AIR COMPRESSOR AUTOMATIC ON-OFF SW. (MDD59W448)
- ⑧ POTTER LOW AIR PRESSURE SWITCH (PS40-2)
- ⑨ 4" GROOVED CHECK VALVE (SEE GROUND FLOOR PLAN)
- ⑩ ELECTRIC BELL (SEE GROUND FLOOR PLAN)
- ⑪ 4"x28"x28"x28" F.D. CONNECTION MARKED 'STANDPIPE & SPRINKLER' EXPOSED BODY (SEE GROUND FLOOR PLAN)
- ⑫ JENNY MODEL F12-B5 1/2 HP, 115/230 VOLTS SINGLE PHASE AIR COMPRESSOR
- ⑬ 12 HEAD CAPACITY STORAGE BOX W/ HEAD WRENCH
- ⑭ 8" AUTOMATIC BALL DRIP AT BOTTOM OF 4" GRD. ELL (SEE GROUND FLOOR PLAN)
- ⑮ DRY PIPE VALVE AIR LINE BY-PASS W/ LOAD GENIE
- ⑯ POTTER PS-10 PRESSURE SWITCH
- ⑰ WATER PRESSURE GAUGE WITH 8" 3-WAY VALVE
- ⑱ 4" POTTER VSR-4 WATERFLOW SWITCH
- ⑳ 2" OUTSIDE MAIN DRAIN OUTLET (SEE GROUND FLOOR PLAN)

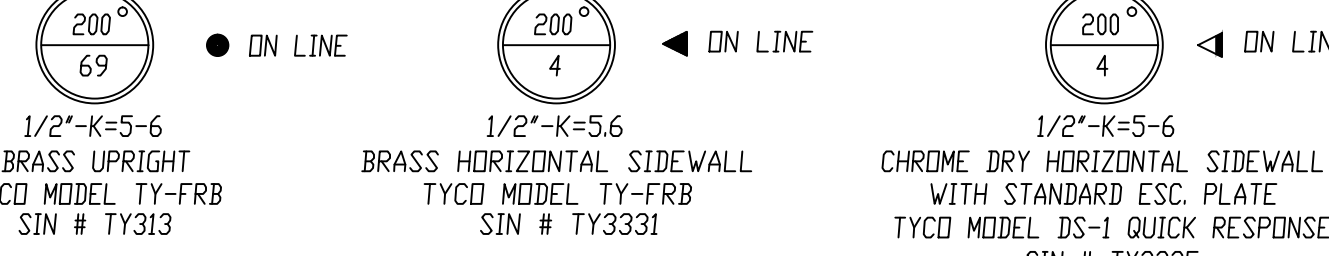
TOTAL DRY SYSTEM CAPACITY = 125 GALLONS
 N.O. = NORMALLY OPEN

ALL ELECTRICAL WIRING BY OTHERS



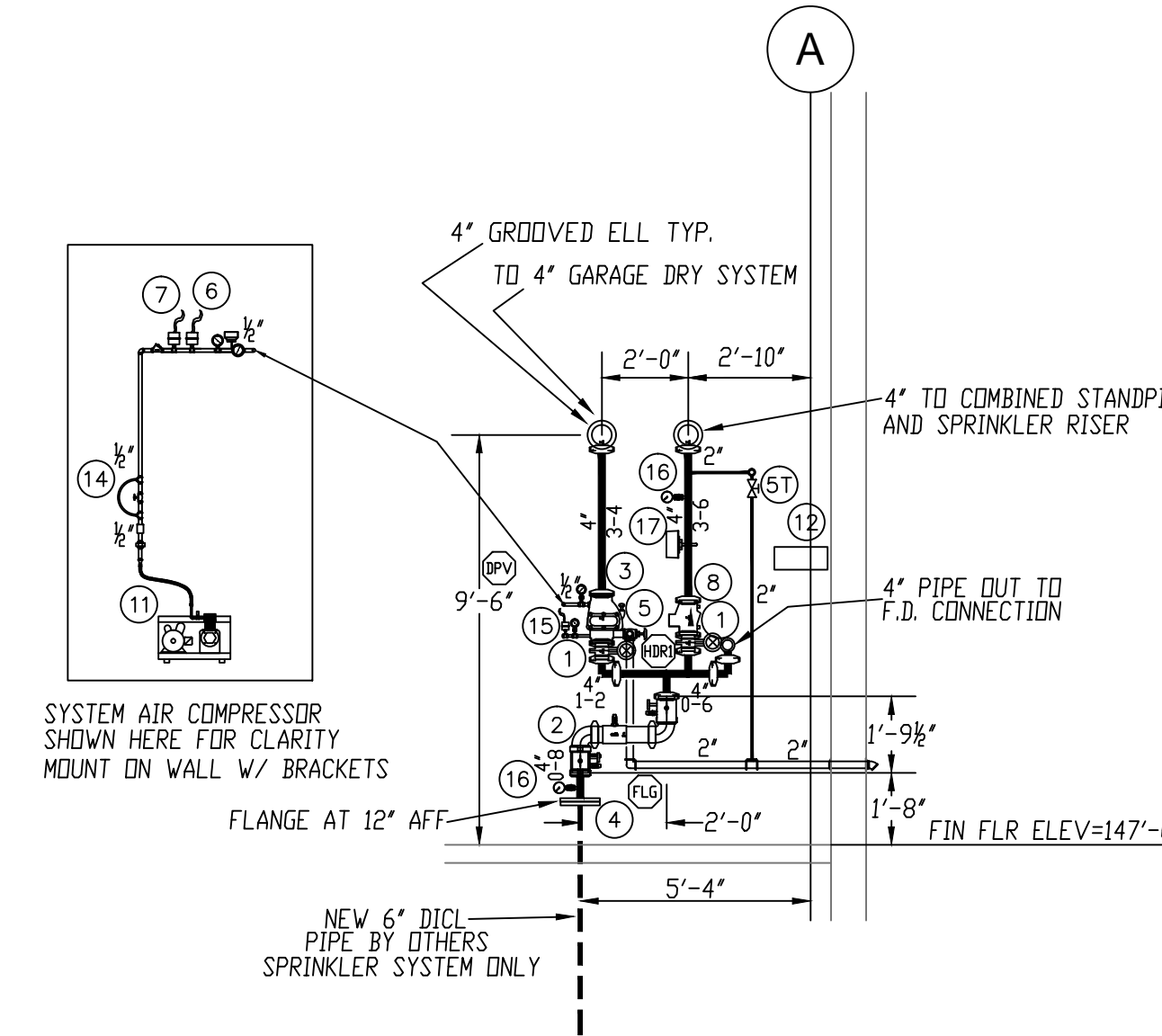
FIRE SPRINKLER PLAN - GROUND FLOOR PIPING

SCALE: 1/8"=1'-0"
 AREA PROTECTED: 9,122 SQ.FT.
 FINISH FLOOR ELEVATION: 147'-6"



TOP OF STEEL AT EL. 160'-2 1/2" UNLESS NOTED OTHERWISE.
 NOTE: GARAGE CEILING IS AT ELEV. 158'-6" (11'-0" OFF ELEV. 147'-6")

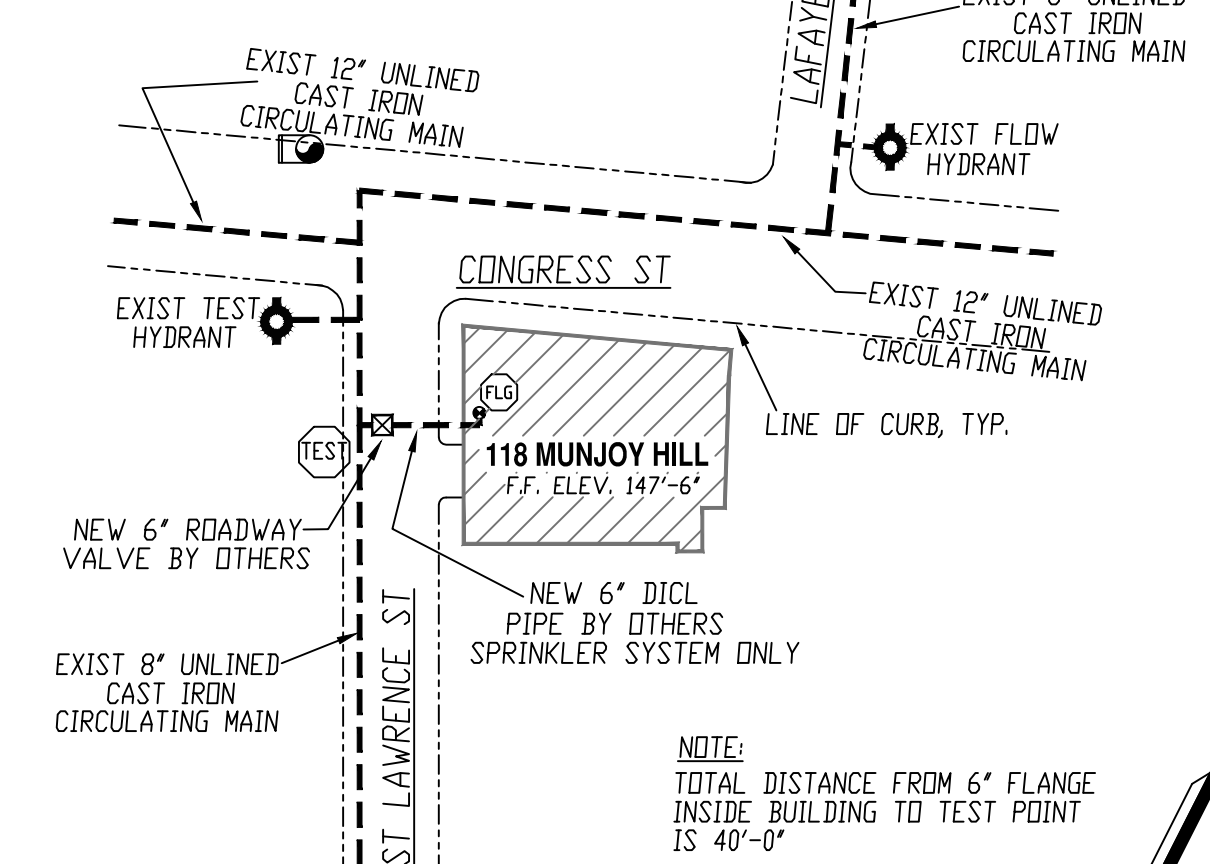
DETAIL "ELV"
 NOT TO SCALE



SPRINKLER VALVE RISER DETAIL "B"
 DIAGRAMMATIC NOT TO SCALE

WATER DATA

STATIC: 50 PSI
 RESIDUAL: 44 PSI
 FLOW: 919 GPM
 ELEVATION: 149'-0"
 DATE: 4/20/14
 TIME: 11:30 AM
 INFORMATION PROVIDED BY PORTLAND WATER DISTRICT



WATER SUPPLY PLAN
 SCALE: N.T.S.

HYDRAULIC-SYSTEM
 THIS BUILDING IS PROTECTED BY A HYDRAULICALLY DESIGNED AUTOMATIC SPRINKLER SYSTEM.

GROUND-FLOOR RETAIL

LOCATION:	RETAIL
NO. OF SPRINKLERS (CALCULATED):	13
BASIS OF DESIGN:	
1. DENSITY (GPM/SQ.F.):	.2
2. DESIRED AREA OF DISCHARGE (SQ.F.):	967
SYSTEM DEMAND:	
1. WATER FLOW RATE (GPM):	251
2. RESIDUAL PRESSURE AT THE BASE OF THE RISER (PSI):	36.3

HYDRAULIC DATA NAMEPLATE

TO BE MOUNTED AT SYSTEM RISER

HYDRAULIC-SYSTEM
 THIS BUILDING IS PROTECTED BY A HYDRAULICALLY DESIGNED AUTOMATIC SPRINKLER SYSTEM.

GROUND-FLOOR PARKING GARAGE

LOCATION:	PARKING GARAGE
NO. OF SPRINKLERS (CALCULATED):	20
BASIS OF DESIGN:	
1. DENSITY (GPM/SQ.F.):	.15
2. DESIRED AREA OF DISCHARGE (SQ.F.):	2018
SYSTEM DEMAND:	
1. WATER FLOW RATE (GPM):	412
2. RESIDUAL PRESSURE AT THE BASE OF THE RISER (PSI):	39.8

HYDRAULIC DATA NAMEPLATE

TO BE MOUNTED AT SYSTEM RISER

HYDRAULIC-SYSTEM
 THIS BUILDING IS PROTECTED BY A HYDRAULICALLY DESIGNED AUTOMATIC SPRINKLER SYSTEM.

GARAGE CEILING SPRINKLERS HYDRAULICALLY MOST REMOTE AREA (.15 GPM/SQ.F./2018 SQ.F.T.) (ELEVATION HIGHEST SPRINKLER = 158'-0")

LOCATION:	PARKING GARAGE
NO. OF SPRINKLERS (CALCULATED):	20
BASIS OF DESIGN:	
1. DENSITY (GPM/SQ.F.):	.15
2. DESIRED AREA OF DISCHARGE (SQ.F.):	2018
SYSTEM DEMAND:	
1. WATER FLOW RATE (GPM):	412
2. RESIDUAL PRESSURE AT THE BASE OF THE RISER (PSI):	39.8

GENERAL NOTES

- EXPOSED BRANCH LINE PIPING (1 1/2"-2") TO BE BLACK SCH. 40 JOINED BY THREADED DUCTILE IRON FITTINGS
- ALL MAIN PIPING (3"-4") TO BE SCHEDULE # 10 BLACK WITH GROOVED ENDS & WELDED OUTLETS JOINED BY MECHANICAL COUPLINGS
- CONCEALED BRANCH LINE PIPING (1 1/2"-2") ON 2ND TO 4TH FLOORS TO BE CPVC PLASTIC PIPE (C=150) JOINED W/ SOLVENT CEMENTED CPVC FITTINGS
- GROUND FLOOR SPRINKLER SYSTEM INSTALLATION TO COMPLY WITH NFPA PAMPHLET # 13, 2007 EDITION
- 2ND TO 4TH FLOOR SPRINKLER SYSTEM INSTALLATION TO COMPLY WITH NFPA PAMPHLET # 13R, 2007 EDITION
- DOWNER TO PROVIDE SUFFICIENT HEAT THROUGHOUT BUILDING TO PREVENT FREEZING OF WATER FILLED SPRINKLER PIPING AND EQUIPMENT (< 40° F.) EXCEPT FOR GROUND FLOOR PARKING GARAGE WHICH WILL BE PROTECTED WITH A DRY SPRINKLER SYSTEM
- ALL DIMENSIONS ARE SHOWN FOR GENERAL LOCATION OF SPRINKLER HEADS; PIPING MAY VARY TO SUIT ACTUAL FIELD CONDITIONS.
- = INDICATES HYDRAULIC REFERENCE POINTS.
- ALL WIRING TO BE DONE BY OTHERS
- DN INDICATES VERTICAL PIPE DOWN
- UP INDICATES VERTICAL PIPE UP

REQUIRED APPROVALS

- OWNER / ARCHITECT
- STATE FIRE MARSHAL
- PORTLAND FIRE DEPARTMENT

DRAWN BY WILLIAM FLYNT
 NICET LEVEL III CERT.# 095574

CHECKED BY GRD
 NICET LEVEL III CERT.# D90388

CONTRACTOR LICENSE # 101
 CONTRACTOR RMS # 368

PROJECT:

118 ON MUNJOY HILL
 118 CONGRESS STREET
 PORTLAND, MAINE 04101

FIRE SPRINKLER CONTRACTOR:

EASTERN FIRE PROTECTION
 AUBURN/LEWISTON INDUSTRIAL AIRPARK, AUBURN, MAINE 04210

CONTRACT WITH:

WRIGHT RYAN CONSTRUCTION, INC.

DWG. NO.	FIRE SPRINKLER PLANS AND DETAILS
1 OF 2	SCALE AS NOTED
JOB NUMBER	DATE
AN-5174-14	08/14/14