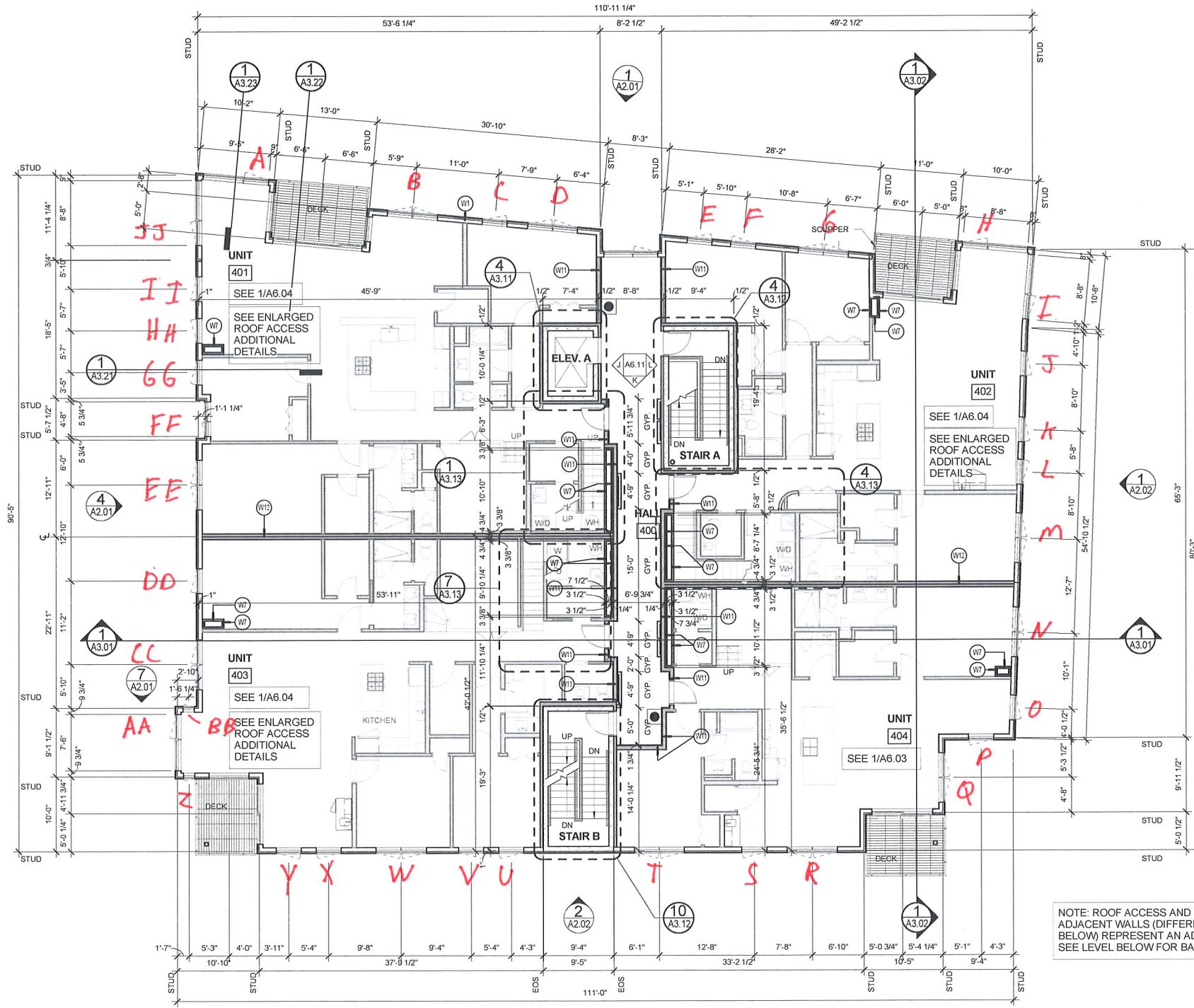


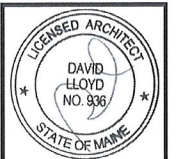
**118 On Munjoy Hill**  
**Fourth Floor**

<b>Window</b>	<b>Height of Window Opening from Finish Floor</b>
A	24 1/8
B	23 13/16
C	24
D	23 15/16
E	24 1/8
F	24 1/16
G	24 3/16
H	24 1/4
I	24 1/8
J	24 3/8
K	24 1/2
L	24 5/8
M	24 3/8
N	24 1/4
O	24 1/4
P	24 1/8
Q	24 1/8
R	23 7/8
S	24 3/16
T	24 3/16
U	23 3/4
V	23 13/16
W	24 1/16
X	24
Y	24
Z	24 3/16
AA	24 1/16
BB	23 15/16
CC	24
DD	23 15/16
EE	24
FF	24
GG	24 5/16
HH	24 1/4
II	24 5/16
JJ	24 1/16



1 | 4TH FLOOR PLAN  
 1/8" = 1'-0"

NOTE: ROOF ACCESS AND ADJACENT WALLS (DIFFERING FROM BELOW) REPRESENT AN ADD ALT SEE LEVEL BELOW FOR BASE BID



Prepared For:  
**118 on Munjoy Hill, LLC**  
 118 CONGRESS STREET  
 PORTLAND, ME 04101

Consultant:  
**ARCHETYPE architects**  
 48 Union Wharf Portland, Maine 04101  
 (207) 772-6022 Fax (207) 772-4056

Architect:  
**118 ON MUNJOY HILL**  
 118 CONGRESS STREET  
 PORTLAND, MAINE

Project:  
**118 ON MUNJOY HILL**

Date: 11 MAR 2014  
 Scale: 1/8" = 1'-0"  
**FOURTH FLOOR PLAN**

**A1.04**