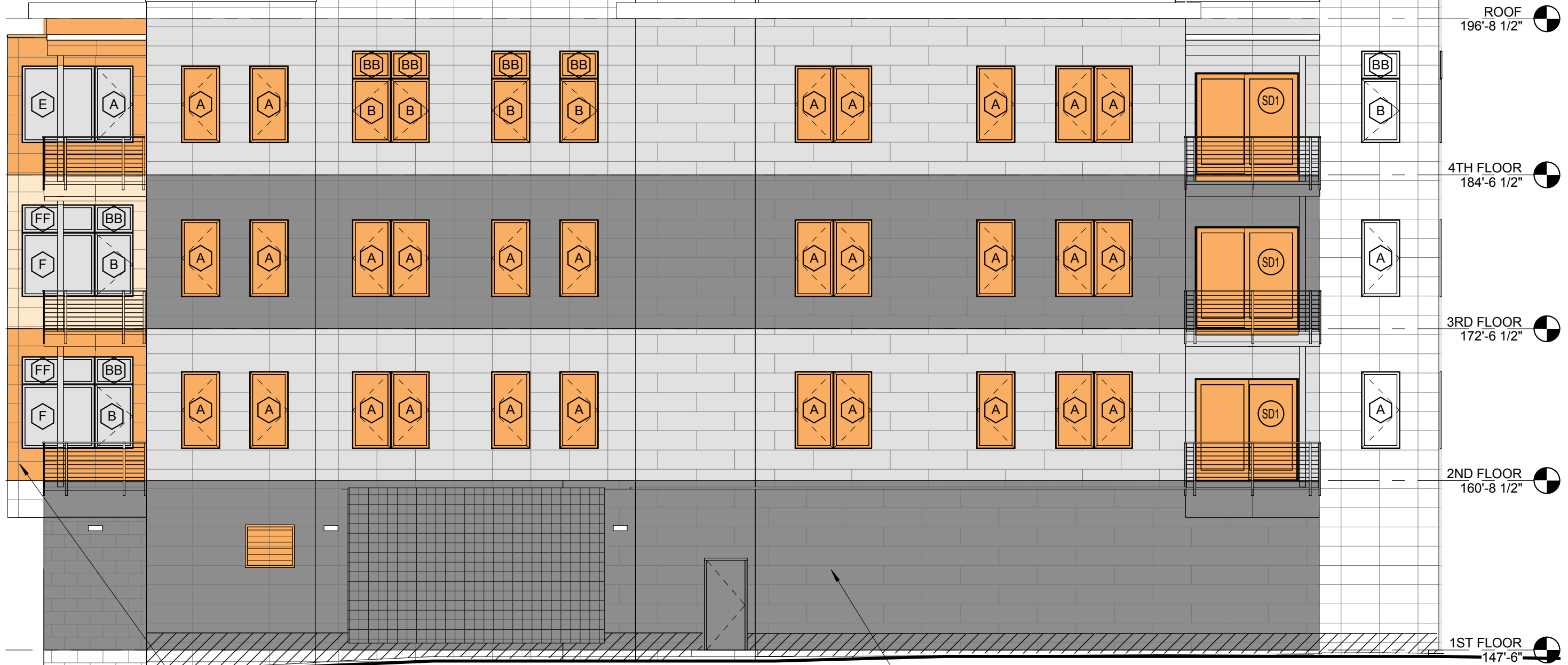


THIS PORTION OF WALL IS 26FT OFF PROPERTY LINE
 NO LIMIT ON AREA OF OPENINGS UNDER FULL NFPA 13
 (SPRINKLERED)
2009 INTERNATIONAL BUILDING CODE - TABLE 705.8



2009 INTERNATIONAL BUILDING CODE - TABLE 705.8
 ORANGE SHADED WALL IS 15 FEET OFF THE PROPERTY LINE, PER
 TABLE 705.8 75% OF WALL AREA CAN BE OPENINGS, PER STORY
 UNDER FULL NFPA 13 (SPRINKLERED).
PROPOSED ORANGE PORTION OF SOUTH WALL:
 2ND FLOOR: WALL = 128 SF OPENINGS = 62 SF → 48%
 3RD FLOOR: WALL = 130 SF OPENINGS = 62 SF → 48%
 4TH FLOOR: WALL = 128 SF OPENINGS = 52 SF → 41%

2009 INTERNATIONAL BUILDING CODE - TABLE 705.8
 GRAY SHADED WALL IS 5 FEET OFF THE PROPERTY LINE, PER TABLE
 705.8 25% OF WALL AREA CAN BE OPENINGS, PER STORY UNDER
 FULL NFPA 13 (SPRINKLERED).
PROPOSED GRAY PORTION OF SOUTH WALL:
 1ST FLOOR: WALL = 1,313 SF OPENINGS = 13 SF → 1%
 2ND FLOOR: WALL = 1,082 SF OPENINGS = 262 SF → 24%
 3RD FLOOR: WALL = 1,097 SF OPENINGS = 262 SF → 24%
 4TH FLOOR: WALL = 1,112 SF OPENINGS = 262 SF → 24%

**MAXIMUM AREA OF EXTERIOR WALL OPENINGS
 CALCULATIONS - SOUTH ELEVATION**

Architect:
ARCHETYPE
 architects
 48 Union Wharf Portland, Maine 04101
 (207) 772-6022 Fax (207) 772-4056

Date: 14 MAY 2014
 Scale: 1/8" = 1'-0"
**SOUTHELEVATION -
 OPENING
 CALCULATIONS**

Project:
118 ON MUNJOY HILL
 118 CONGRESS STREET PORTLAND, MAINE

SK.00-2