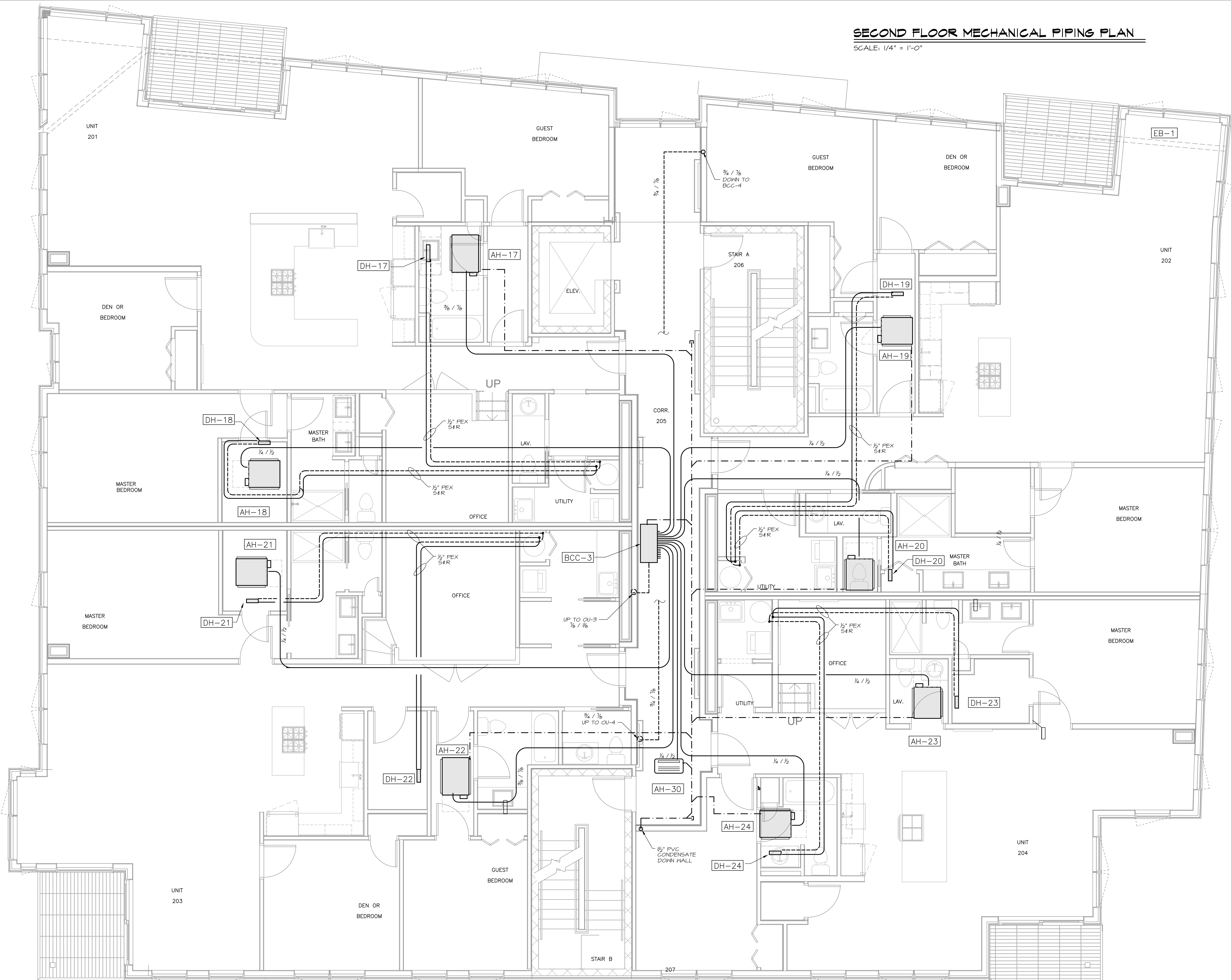
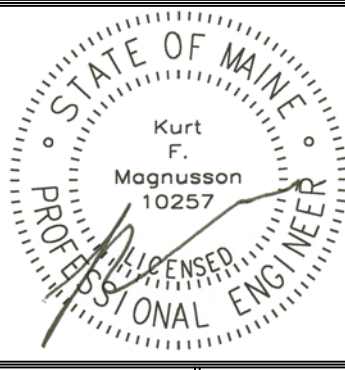
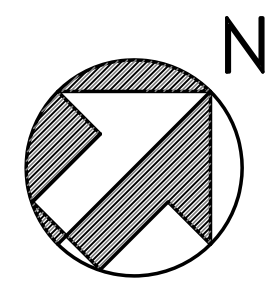



SECOND FLOOR MECHANICAL PIPING PLAN

SCALE: 1/4" = 1'-0"



Prepared For:
118 on Munjoy Hill, LLC
 118 CONGRESS STREET
 PORTLAND, ME 04101

Consulting Engineer:

MECHANICAL SYSTEMS ENGINEERS
 10 FOREST FALLS DRIVE
 PORTLAND, ME 04101
 (207) 772-4056

Architect:

ARCHETYPE
 architects
 48 Union Wharf Portland, Maine 04101
 (207) 772-6022 Fax (207) 772-4056

Project:
118 ON MUNJOY HILL
 118 CONGRESS STREET
 PORTLAND, MAINE

Revisions:
 100% CONSTRUCTION DOCUMENTS

Date: 24 FEB 2014
 Scale: 1/4" = 1'-0"
SECOND FLOOR PIPING PLAN

M7
 MSE PROJECT 1332