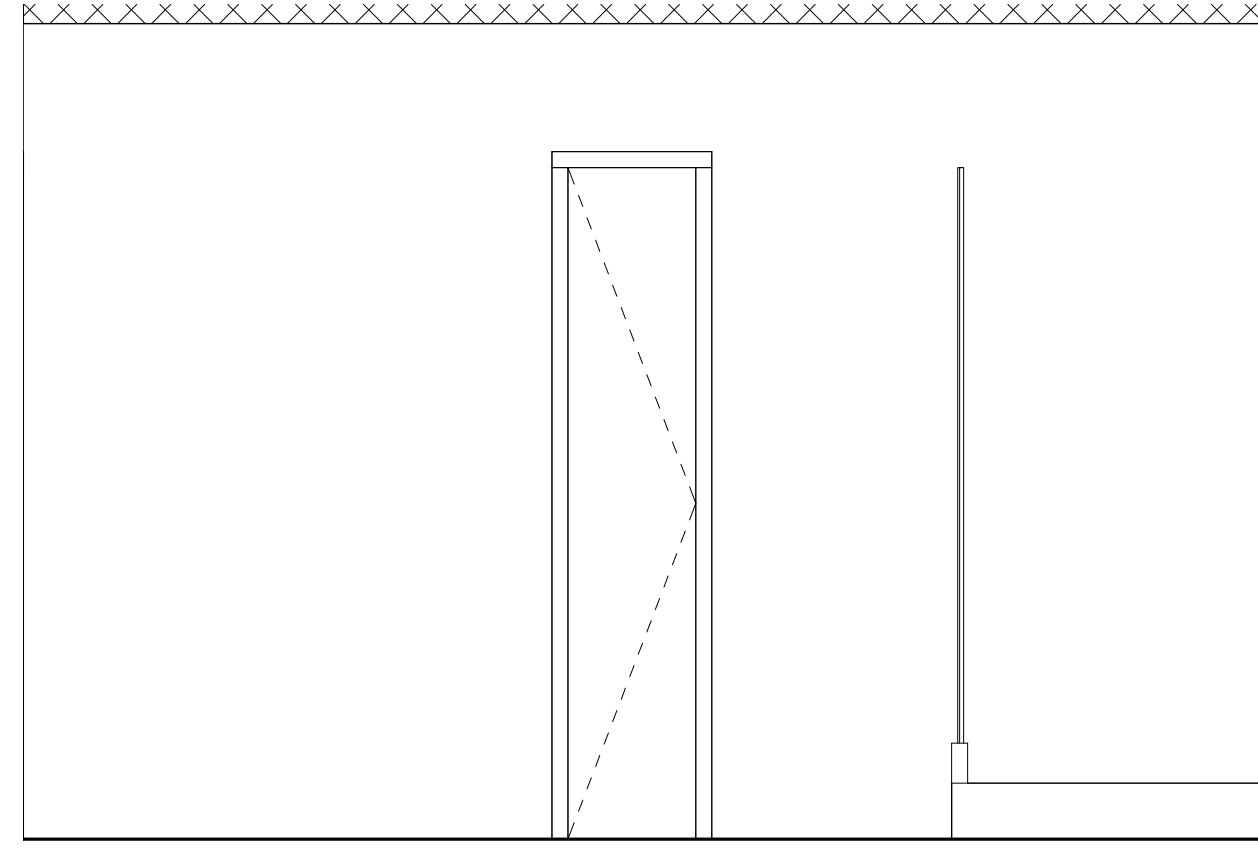
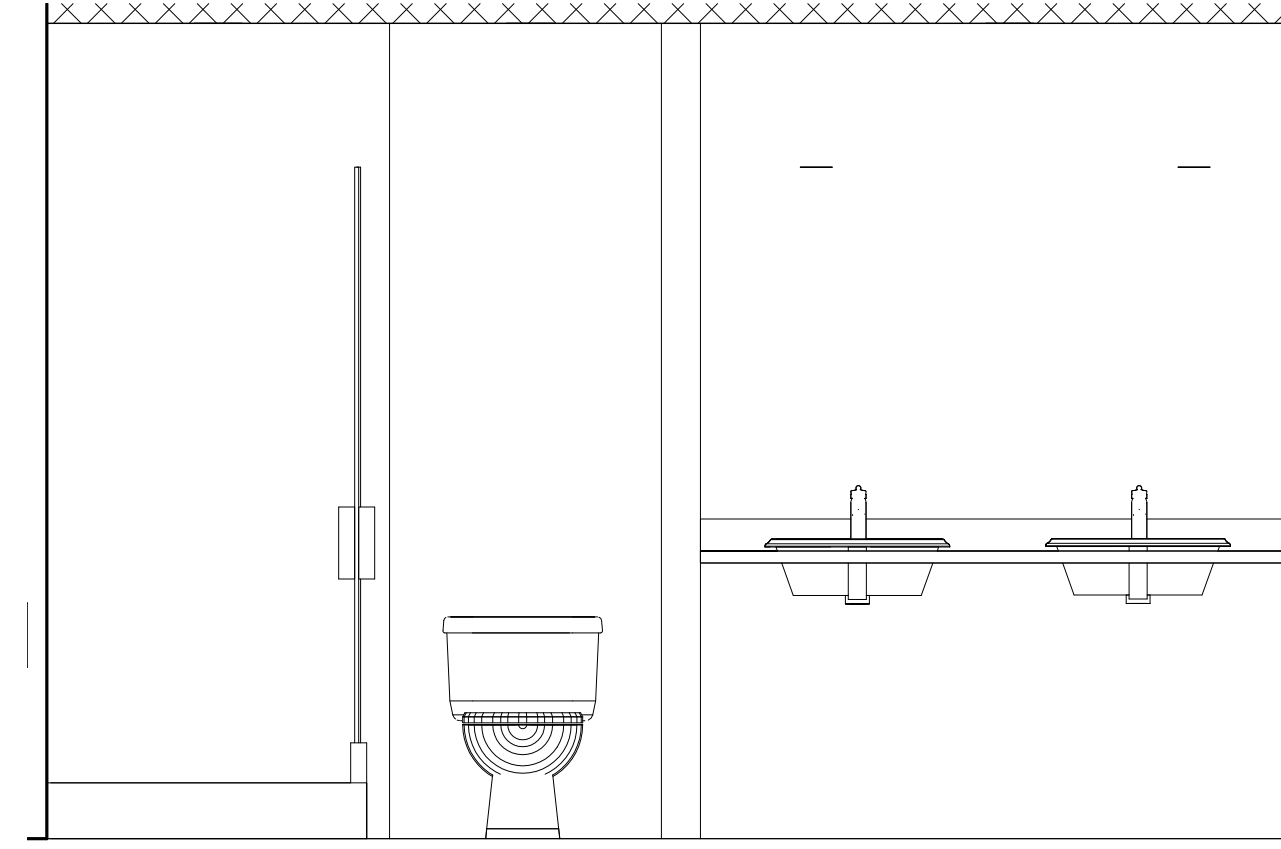


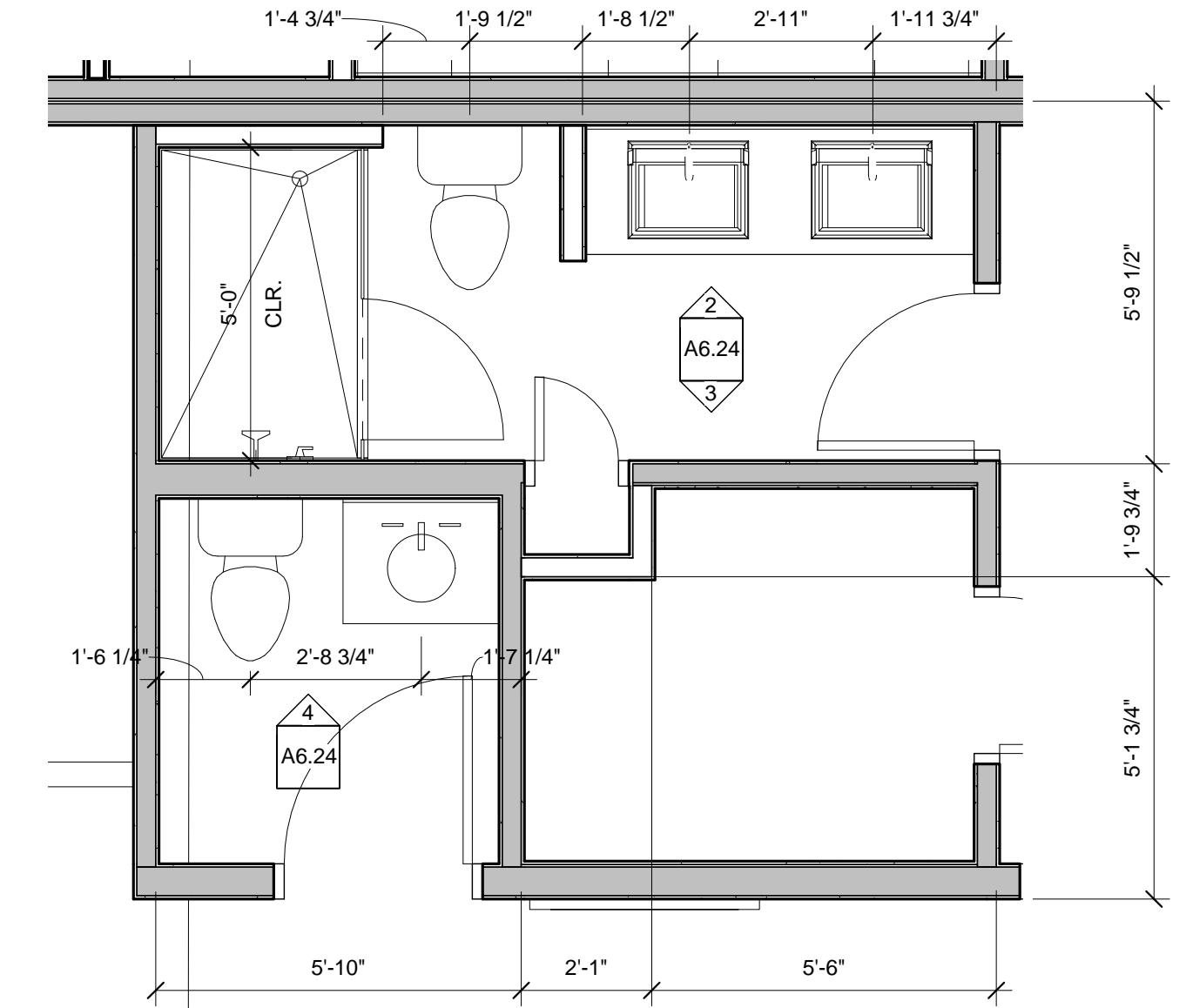
4 | UNITS 204, 304, 404 POWDER RM ELEV. C
1/2" = 1'-0" 0 2' 4' 8' 16'



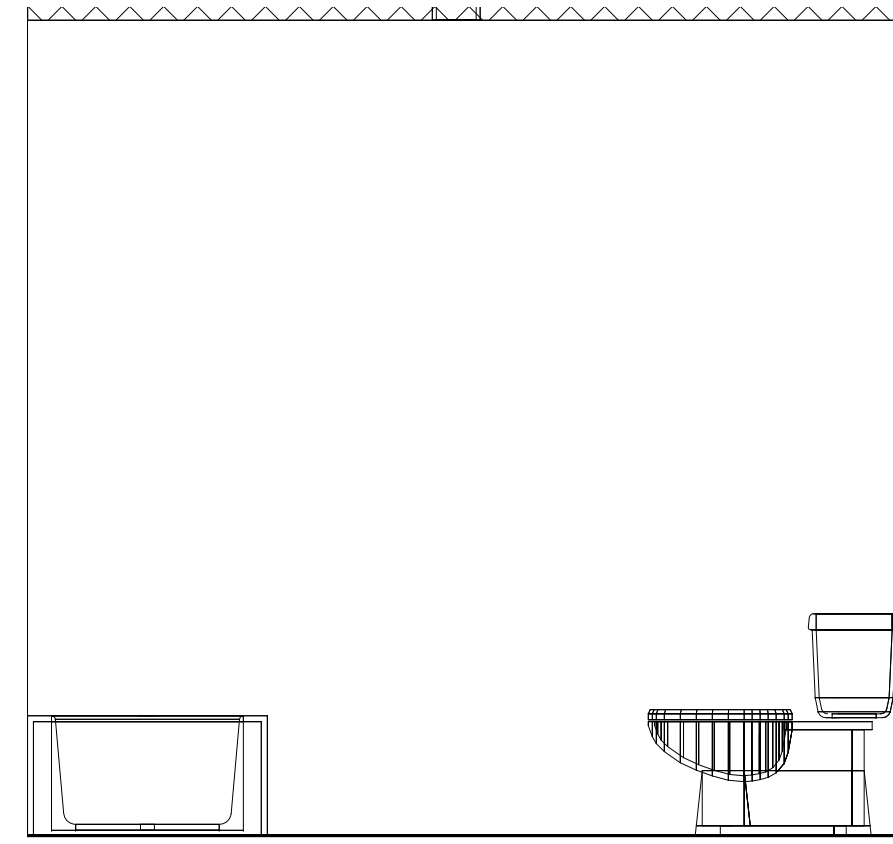
3 | UNITS 204, 304, 404 PRIMARY BATH ELEV. B
1/2" = 1'-0" 0 2' 4' 8' 16'



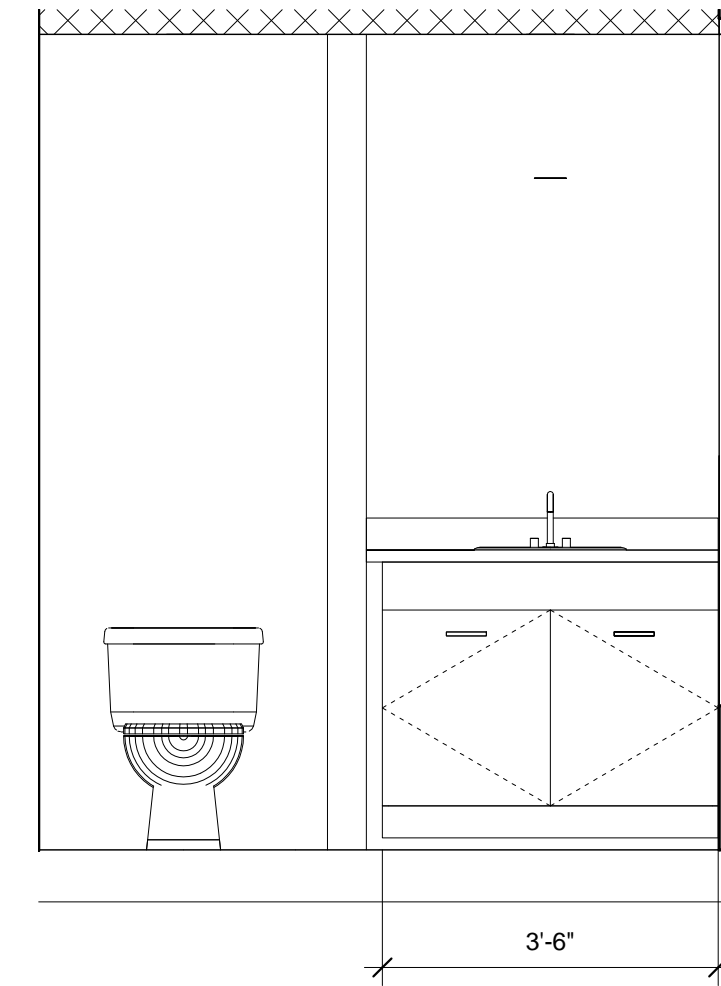
2 | UNITS 204, 304, 404 PRIMARY BATH ELEV. A
1/2" = 1'-0" 0 2' 4' 8' 16'



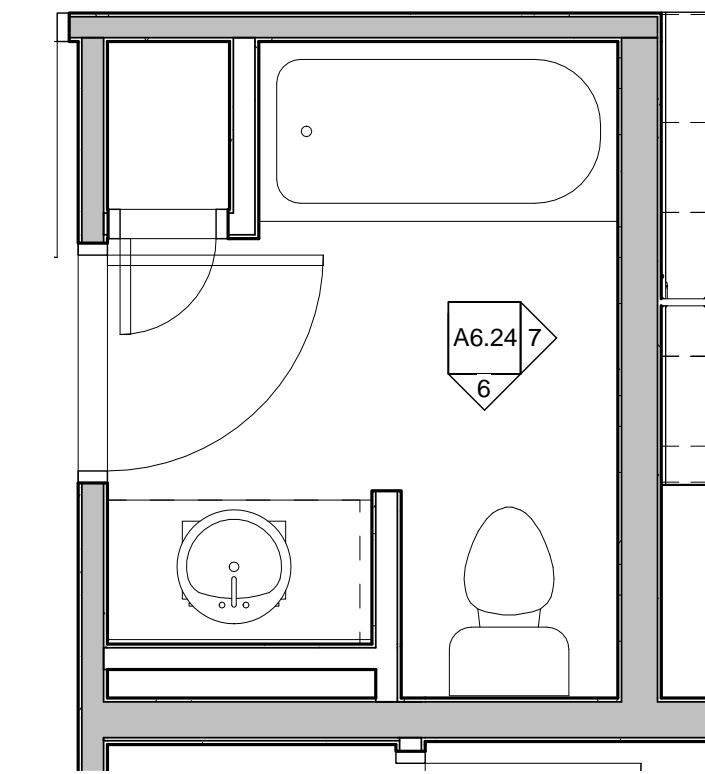
1 | UNITS 204, 304, 404 PRIMARY BATH, POWDER RM
3/8" = 1'-0" 0 1' 2' 4' 8'



7 | UNITS 204, 304, 404 GUEST BATH ELEV. E
1/2" = 1'-0" 0 2' 4' 8' 16'



6 | UNITS 204, 304, 404 GUEST BATH ELEV. D
1/2" = 1'-0" 0 2' 4' 8' 16'



5 | UNITS 204, 304, 404 GUEST BATH PLAN
3/8" = 1'-0" 0 1' 2' 4' 8'

Prepared For:
118 on Munjoy Hill, LLC

118 CONGRESS STREET
PORTLAND, ME 04101

Consultant:

ARCHETYPE
architects
48 Union Wharf Portland, Maine 04101
(207) 772-6022 ARCHETYPE@ARCHETYPEA.COM

Project:
118 ON MUNJOY HILL

118 CONGRESS STREET
PORTLAND, MAINE

Revisions:

Date: 07 MAR 2014
Scale: As indicated
ENLARGED PLANS - BATHROOMS

A6.24