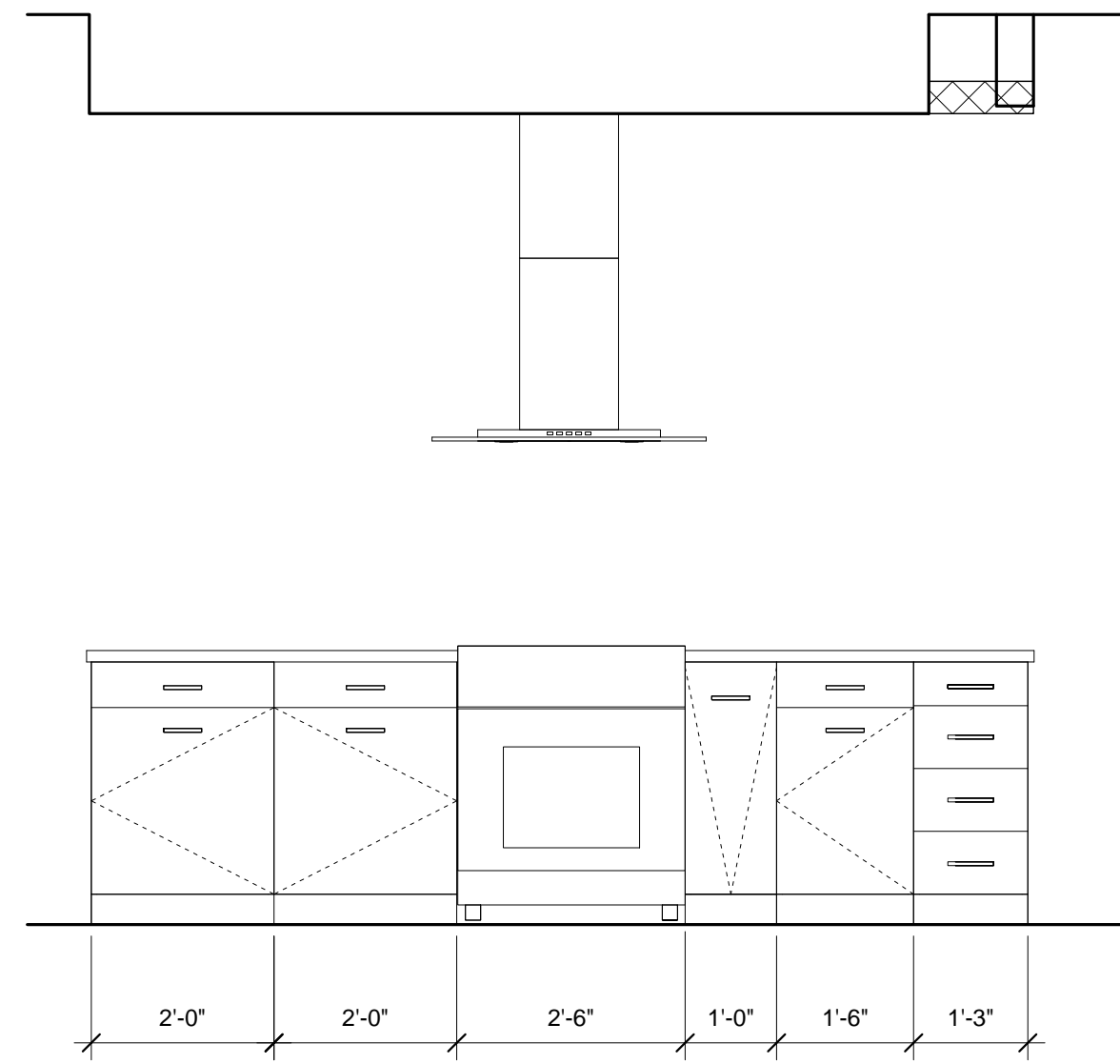


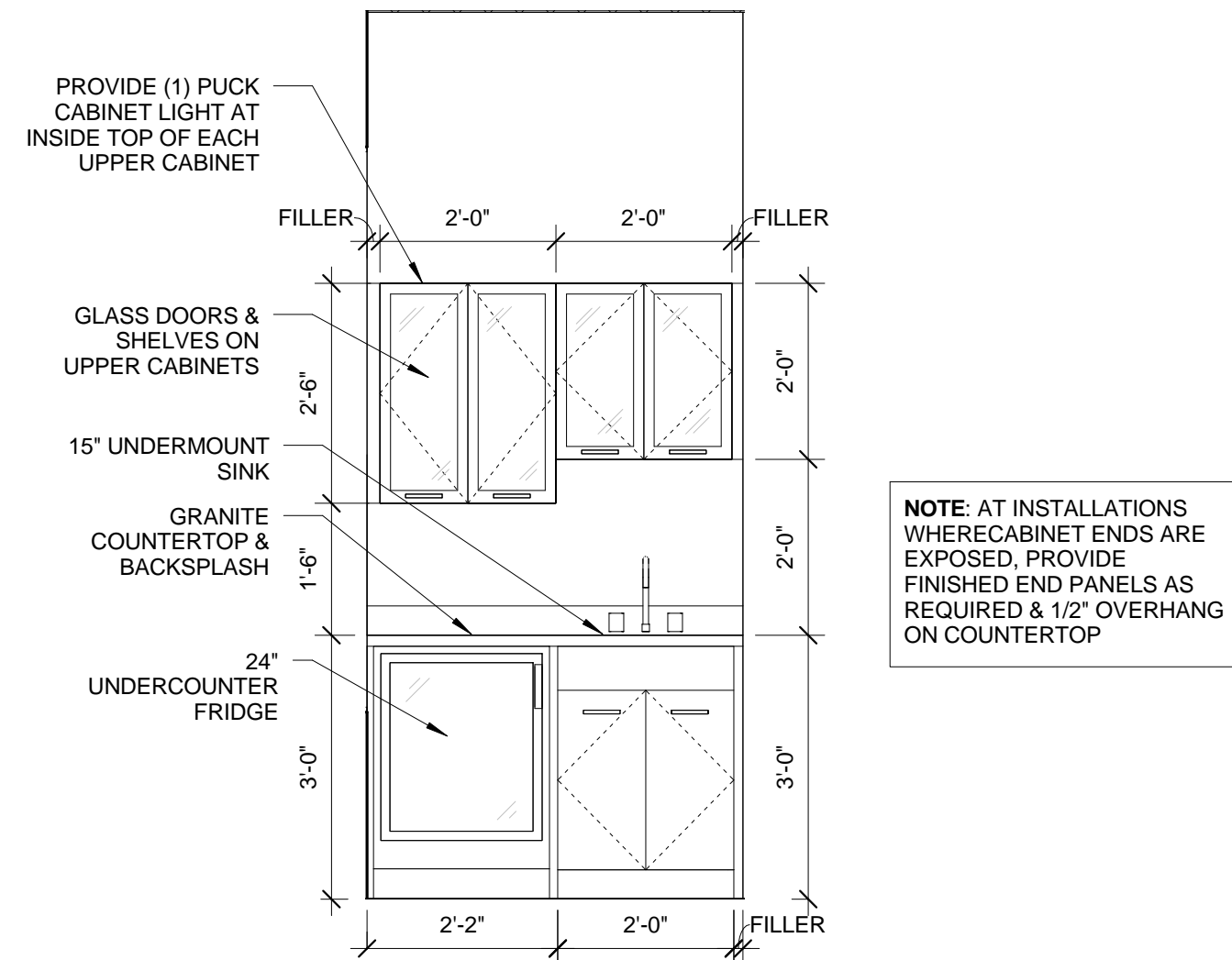
A UNIT 204 KITCHEN ELEV. A

1/2" = 1'-0" 0 2'-0" 4'-0" 8'-0"



B UNIT 204 KITCHEN ELEV. B

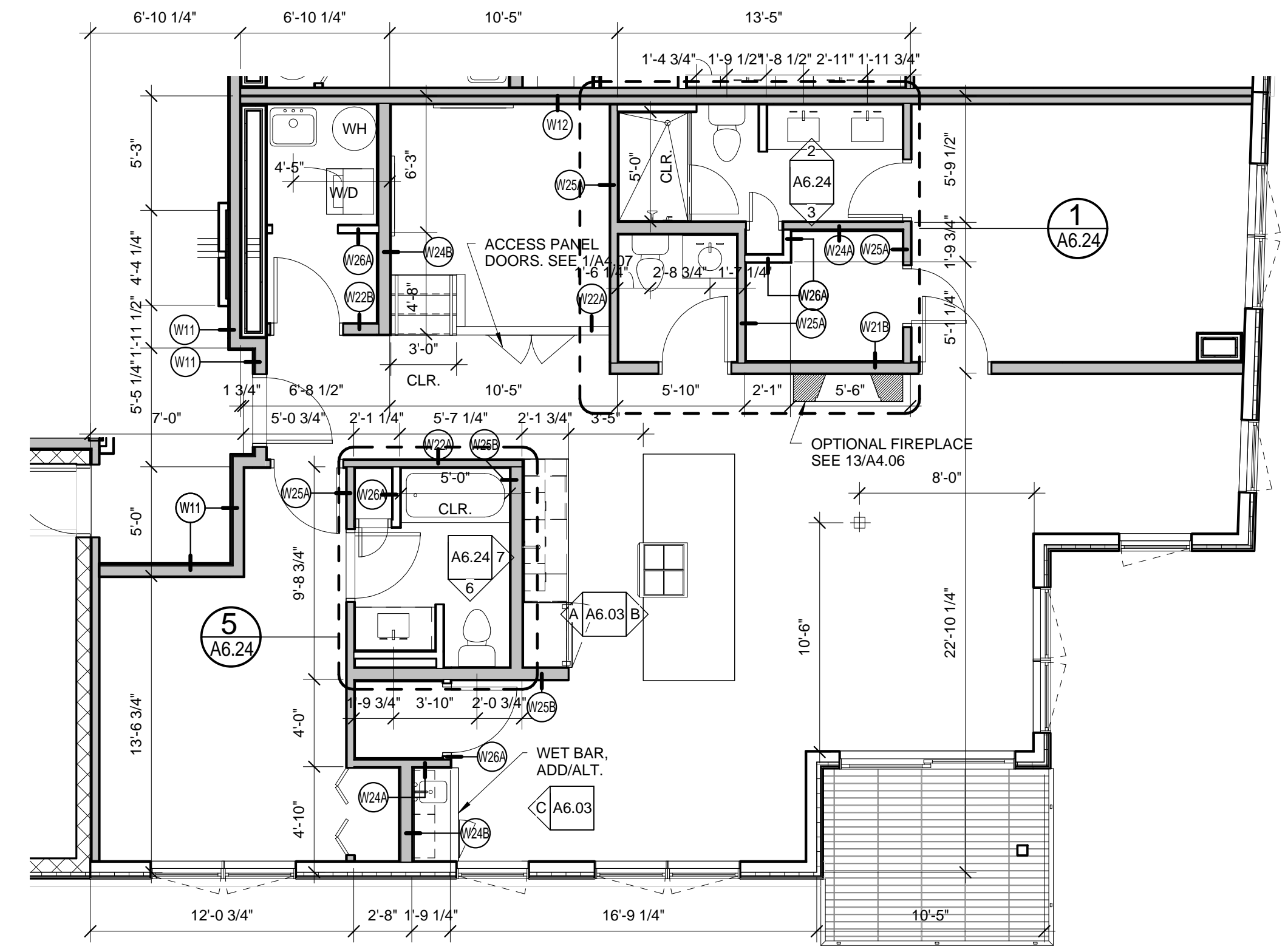
1/2" = 1'-0" 0 2'-0" 4'-0" 8'-0"



NOTE: AT INSTALLATIONS WHERE CABINET ENDS ARE EXPOSED, PROVIDE FINISHED END PANELS AS REQUIRED & 1/2" OVERHANG ON COUNTERTOP

C TYP. WET BAR ELEVATION - ADD/ALT.

1/2" = 1'-0" 0 2'-0" 4'-0" 8'-0" 16'-0"



1 UNITS 204, 304, 404 - ENLARGED PLAN

3/16" = 1'-0" 0 2'-0" 4'-0" 8'-0" 16'-0"

Prepared For:

118 on Munjoy Hill, LLC

118 CONGRESS STREET
PORTLAND, ME 04101

Consultant:

ARCHETYPE
architects
48 Union Wharf Portland, Maine 04101
(207) 772-6022 ARCHETYPE@ARCHETYPEA.COM

Architect

118 ON MUNJOY HILL

118 CONGRESS STREET
PORTLAND, MAINE

Project:

Revisions:

Date: 07 MAR 2014

Scale:

As indicated
**UNITS 204, 304, 404
ENLARGED PLAN**

A6.03