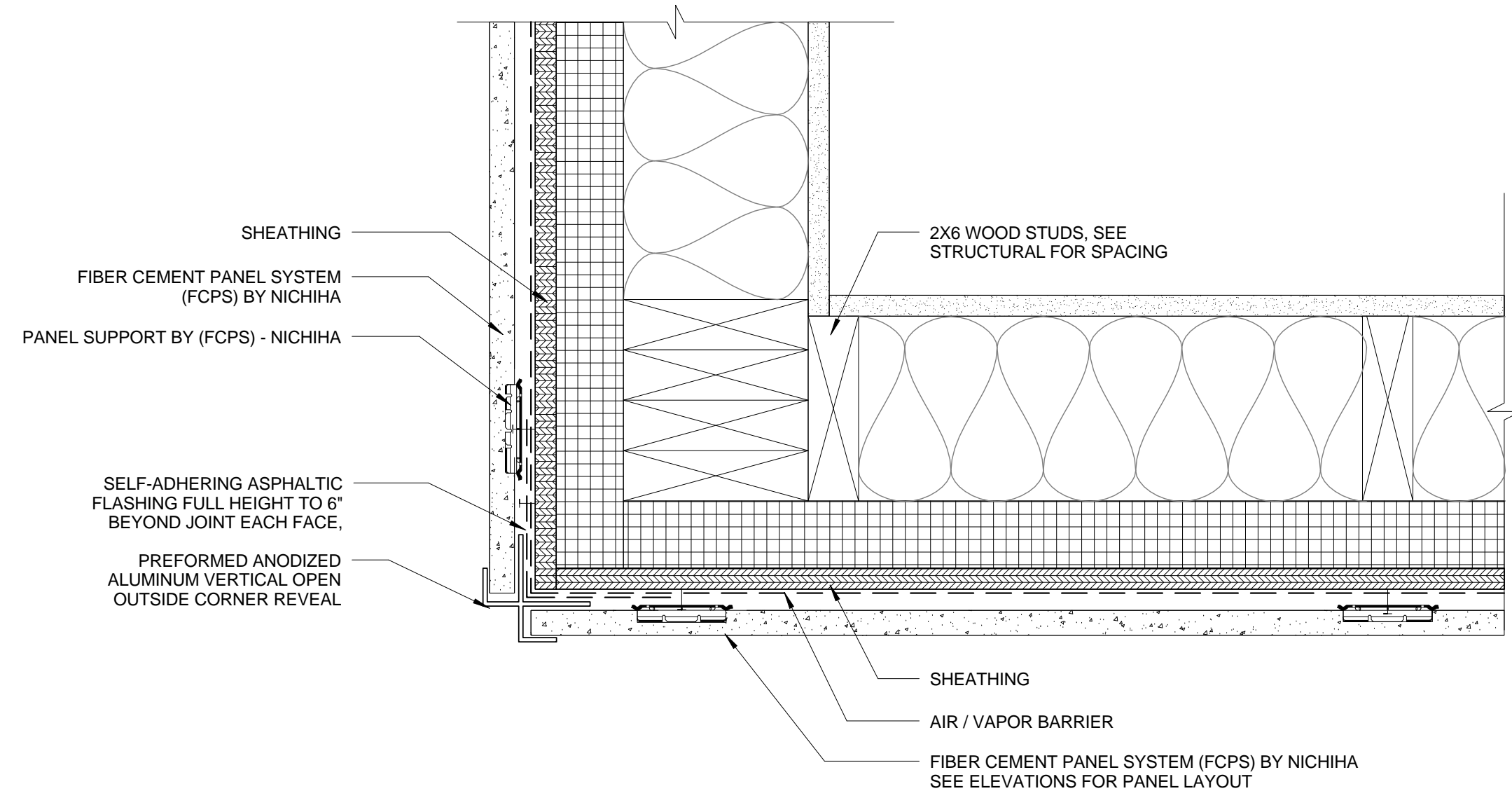


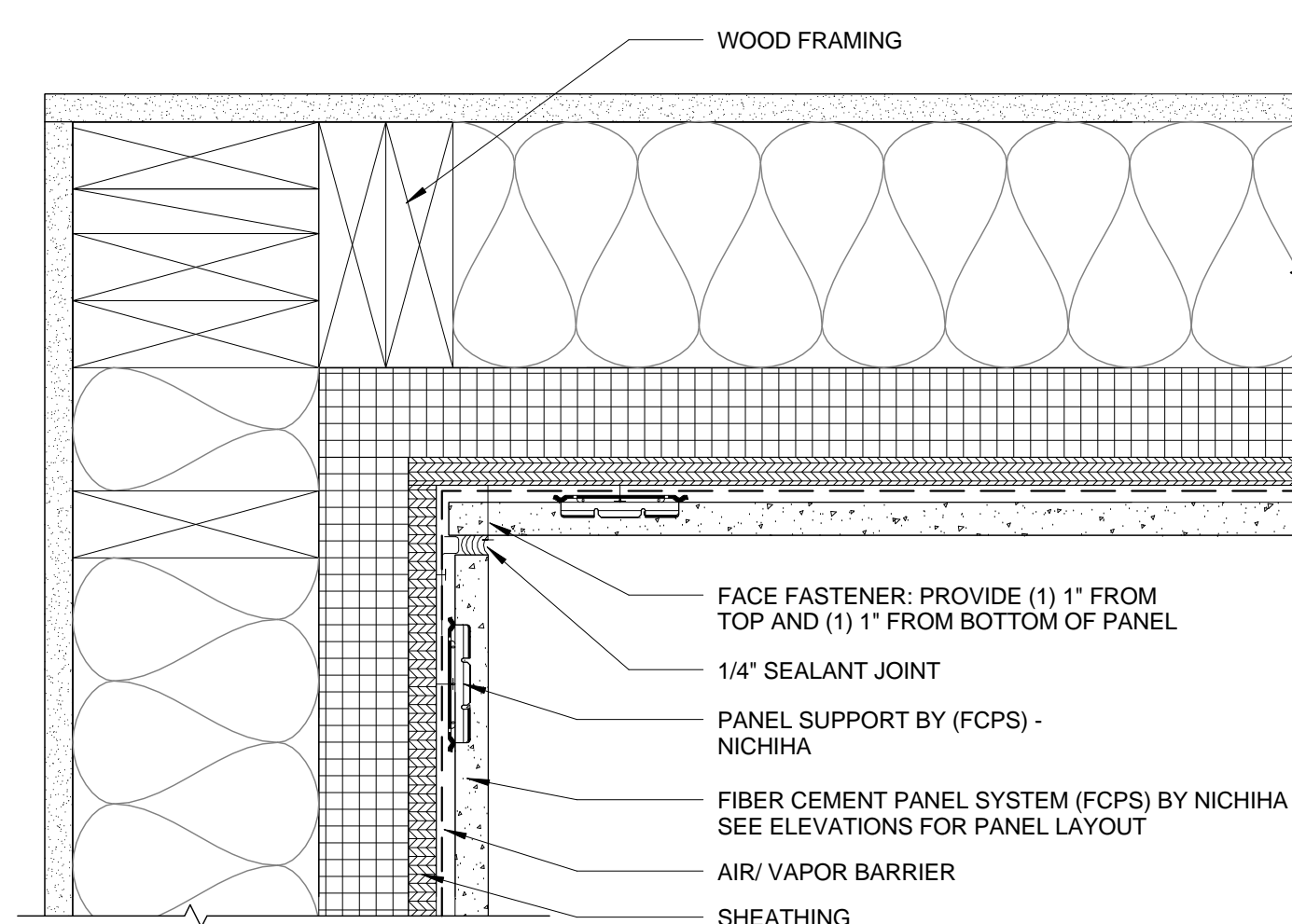
5 | EXTERIOR OUTSIDE CORNER - NICHIBA PANEL

3" = 1'-0" 0 1/2 3 6 12



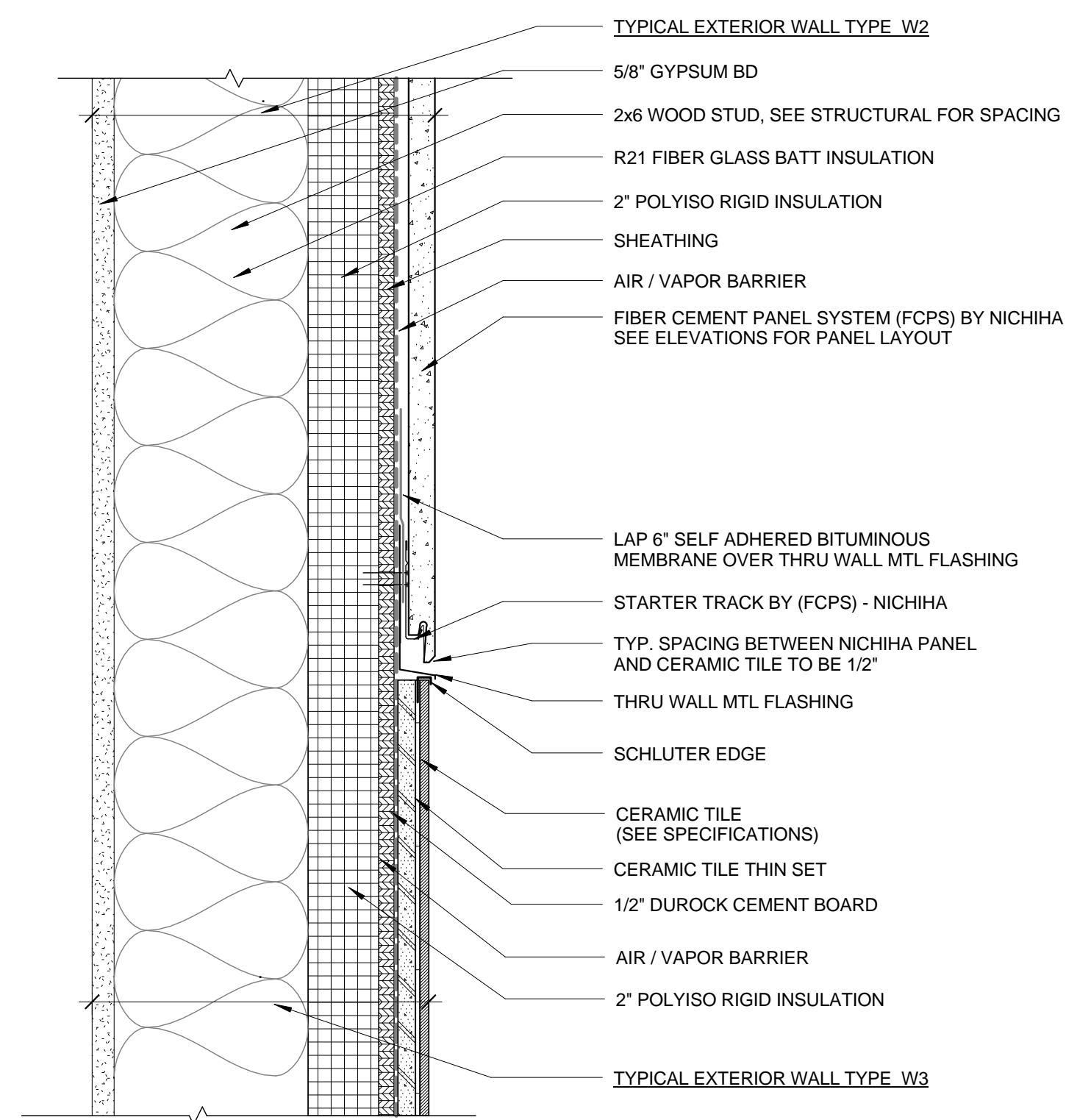
6 | EXTERIOR OUTSIDE CORNER - OPEN TRIM

3" = 1'-0" 0 1/2 3 6 12



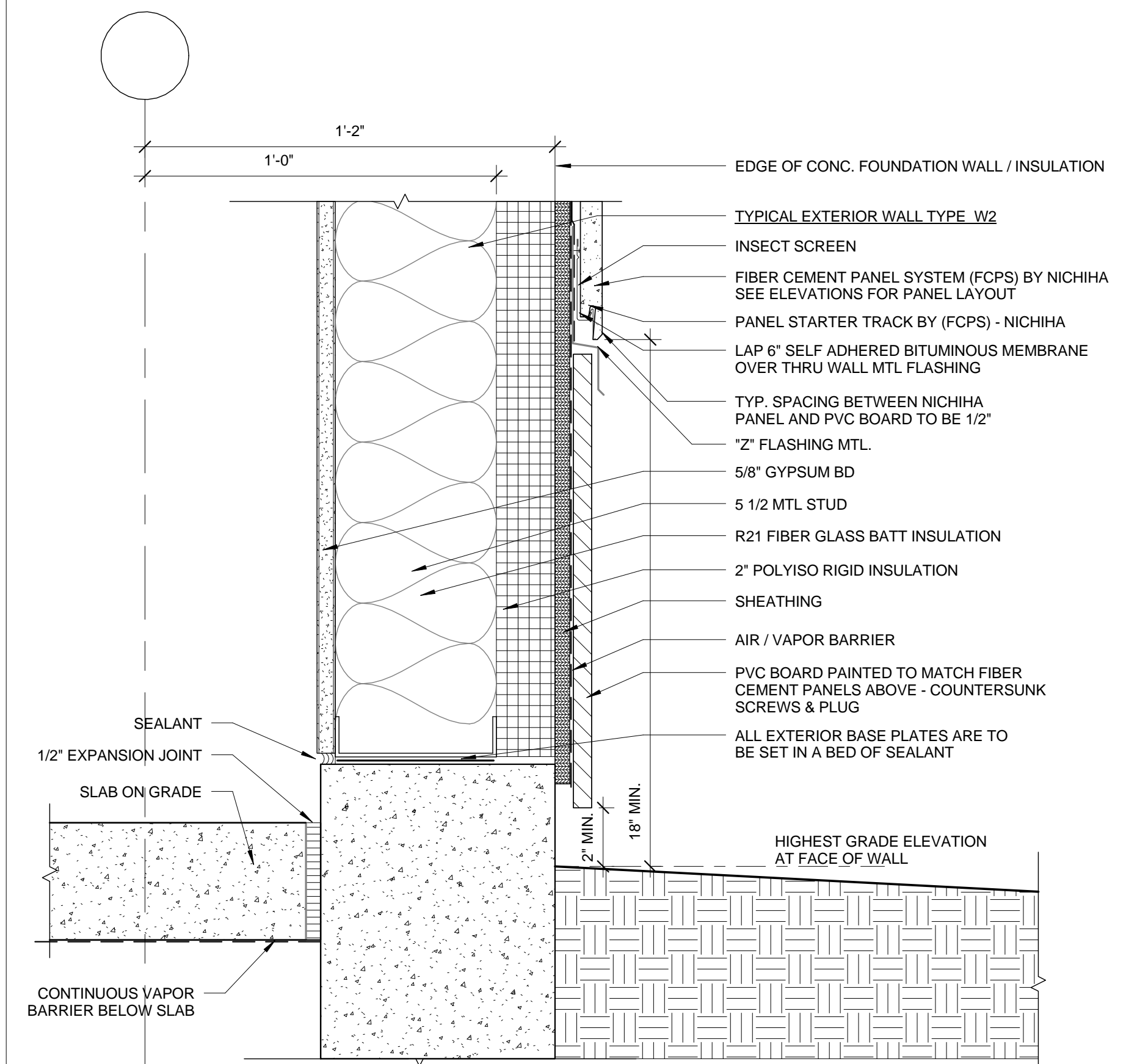
7 | EXTERIOR INSIDE CORNER

3" = 1'-0" 0 1/2 3 6 12



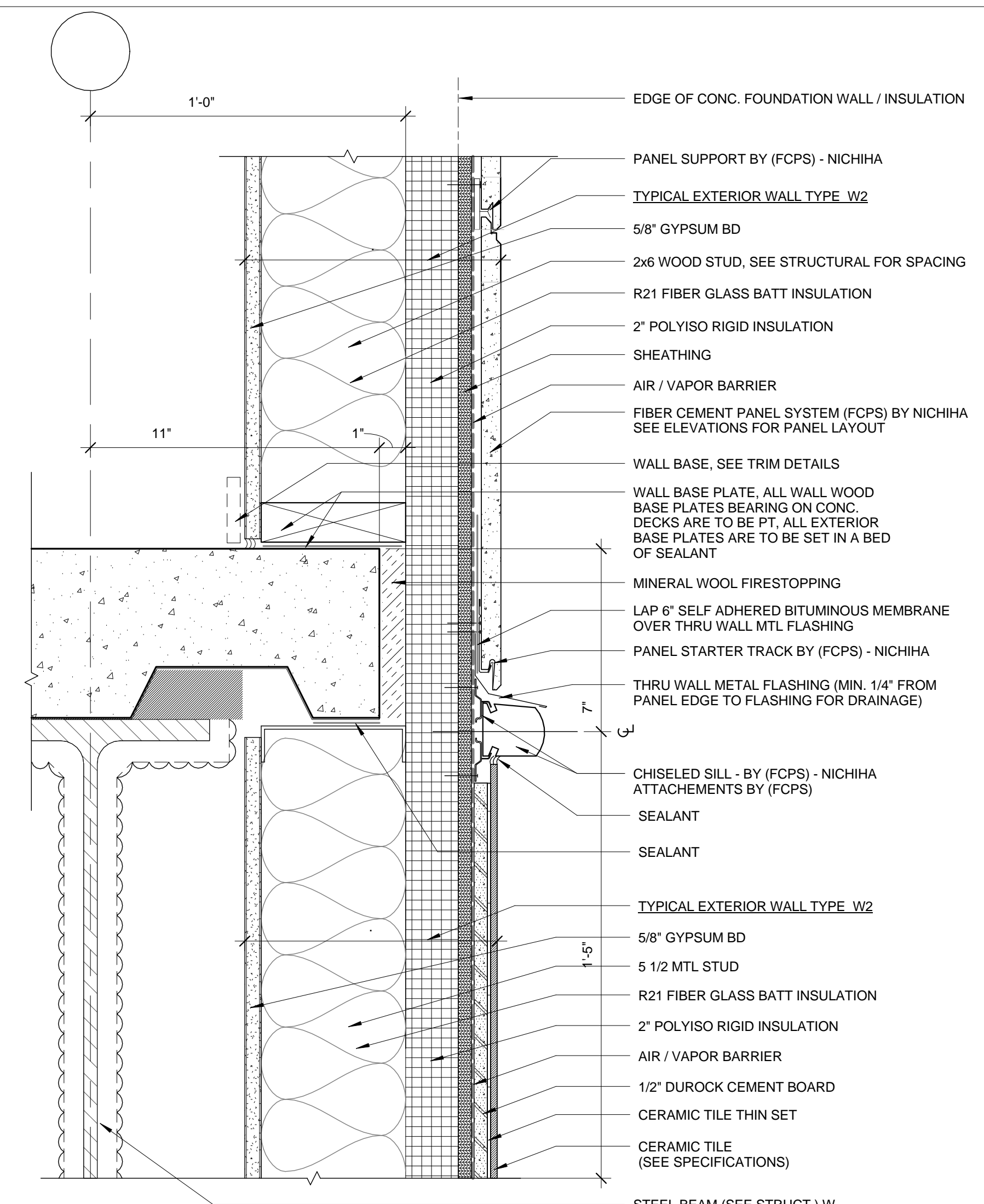
3 | EX. HORIZONTAL MATERIAL TRANSITION - METAL FLASHING

3" = 1'-0" 0 1/2 3 6 12



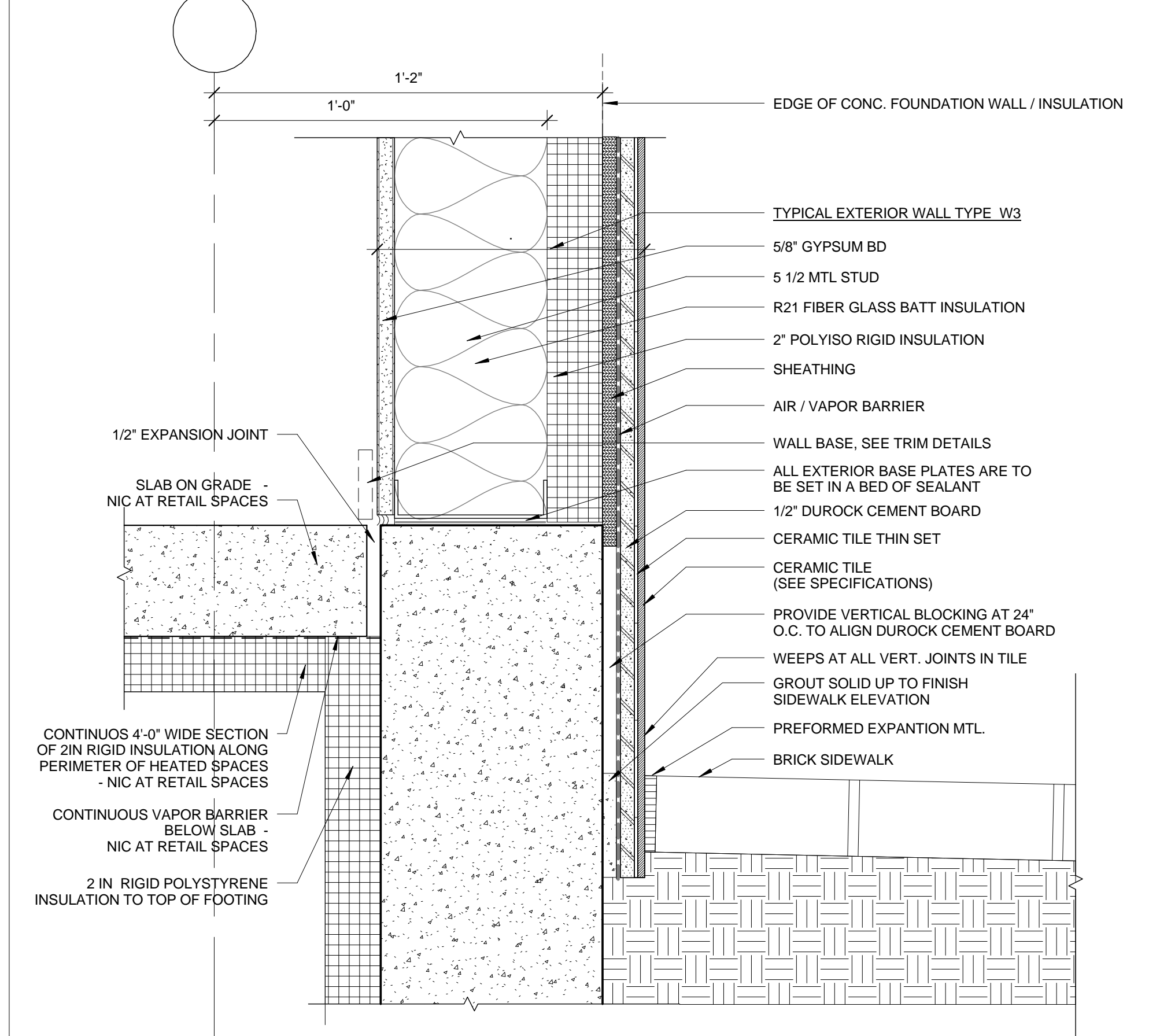
4 | BASE OF WALL AT GARAGE

3" = 1'-0" 0 1/2 3 6 12



1 | EXTERIOR HORIZONTAL MATERIAL TRANSITION

3" = 1'-0" 0 1/2 3 6 12



2 | BASE OF WALL AT TILE

3" = 1'-0" 0 1/2 3 6 12



Prepared For:
118 on Munjoy Hill, LLC
 118 CONGRESS STREET
 PORTLAND, ME 04101

Consultant:
ARCHETYPE architects
 48 Union Wharf Portland, Maine 04101
 (207) 772-6022 Fax (207) 772-4056

Project:
118 ON MUNJOY HILL
 118 CONGRESS STREET
 PORTLAND, MAINE

Revisions:

Date: 07 MAR 2014
 Scale: 3" = 1'-0"

A5.01

EXTERIOR DETAILS