

Prepared For:  
**118 on Munjoy Hill, LLC**

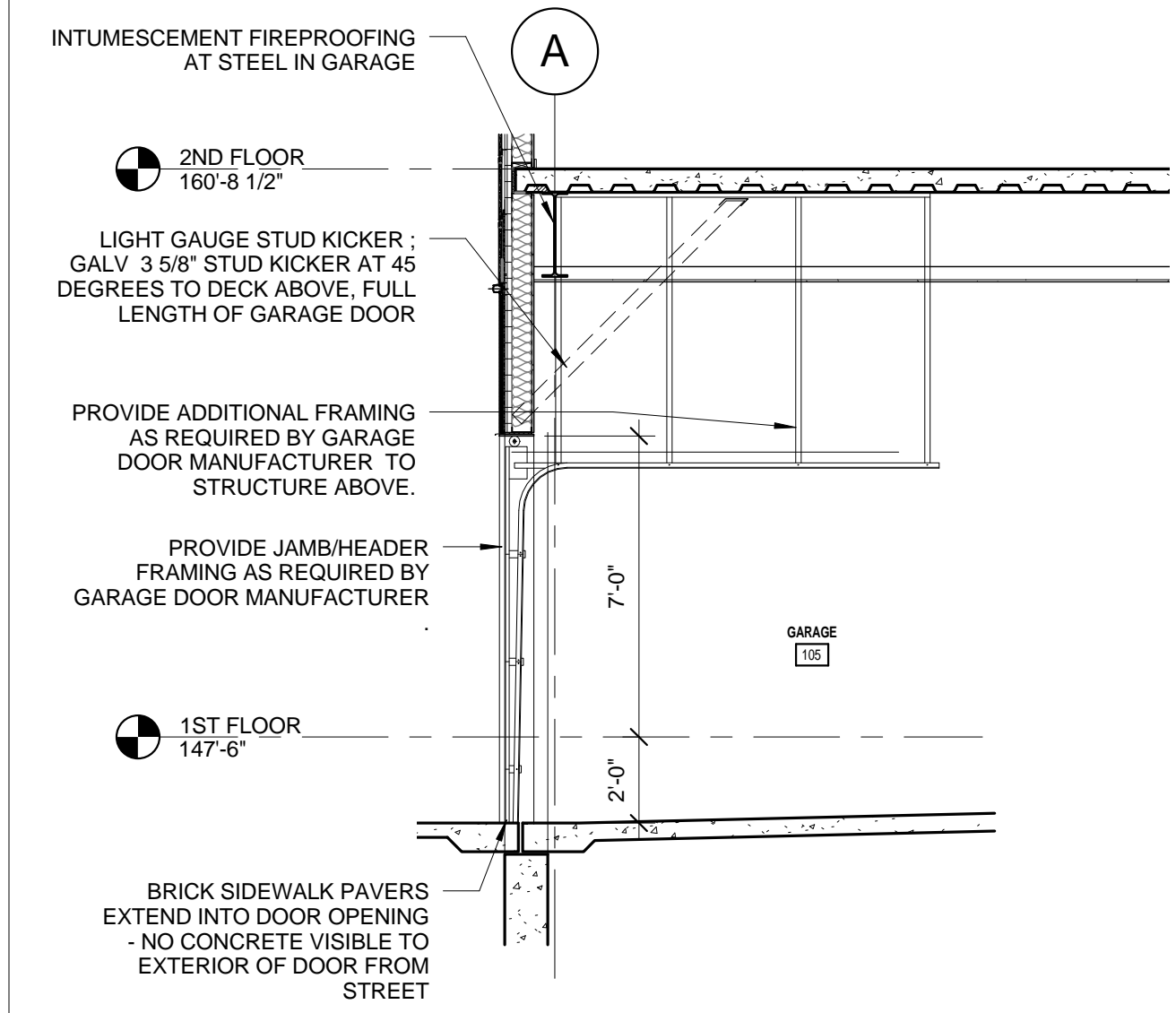
Consultant:  
**ARCHETYPE architects**  
48 Union Wharf Portland, Maine 04101  
(207) 772-6022 Fax (207) 772-4056

Project:  
**118 ON MUNJOY HILL**  
118 CONGRESS STREET  
PORTLAND, MAINE

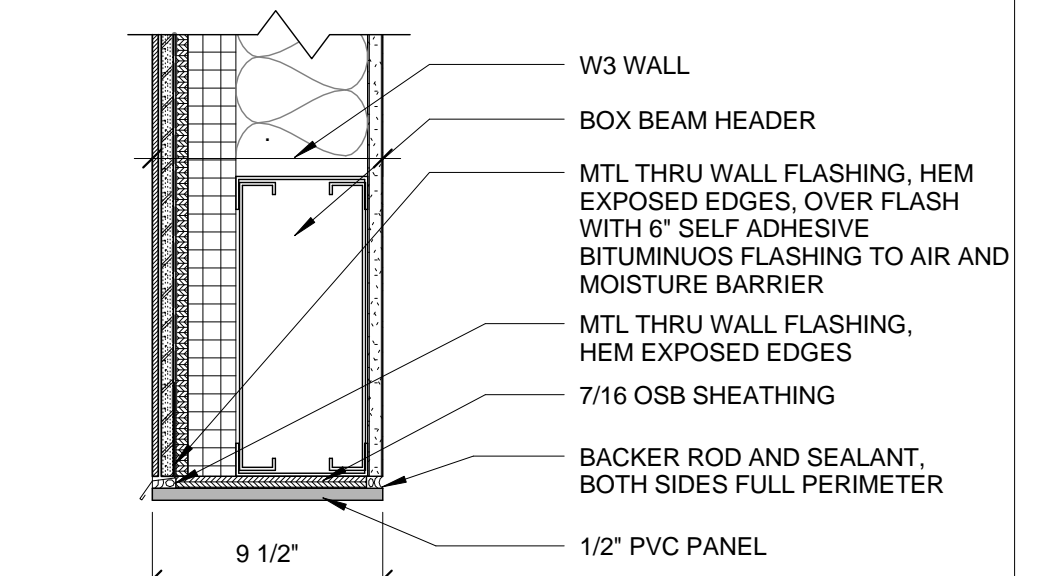
Revisions:

Date: **07 MAR 2014**  
Scale: **As indicated**

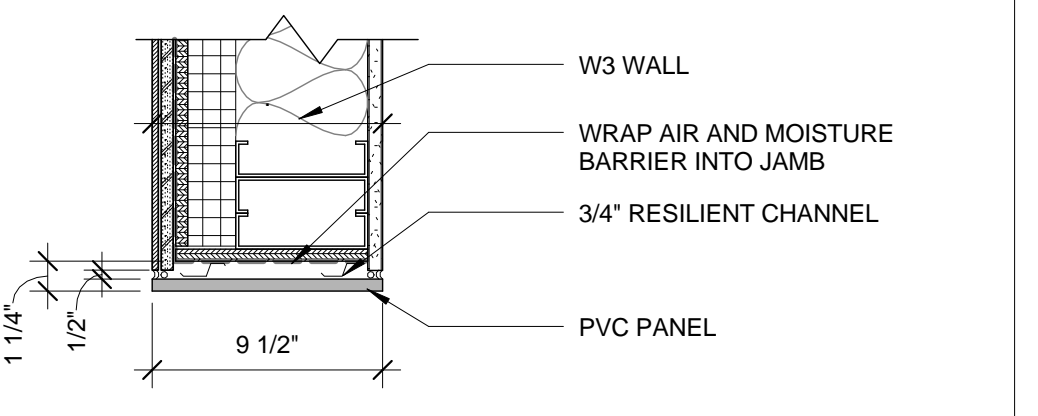
**INTERIOR DETAILS - GARAGE**  
**A4.08**



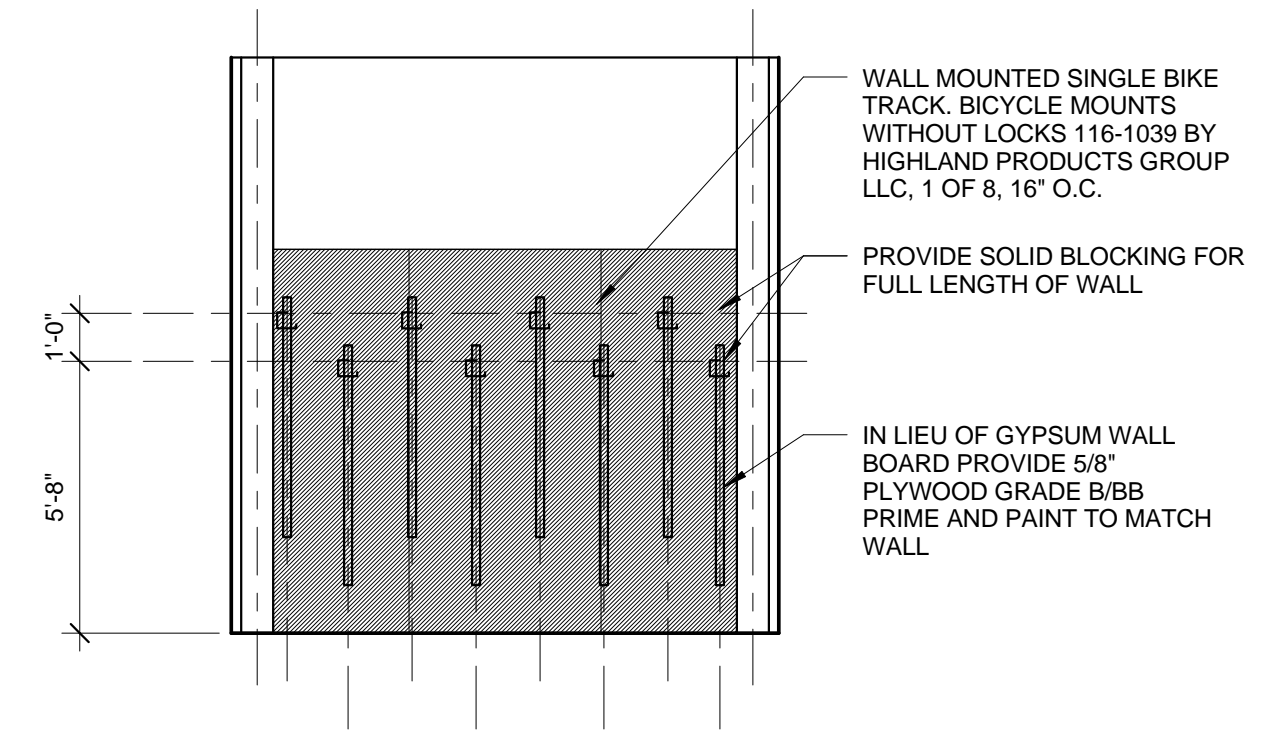
**8 GARAGE DOOR SECTION**  
1/4" = 1'-0"



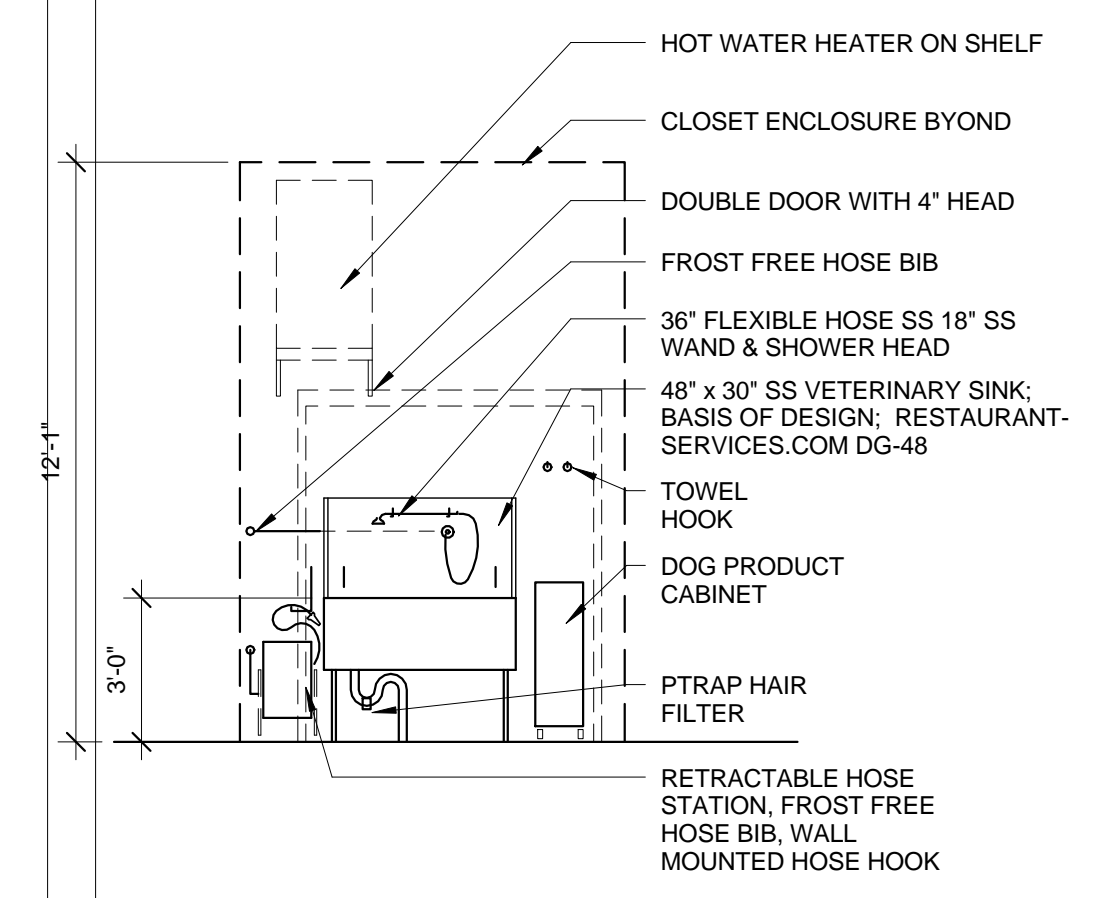
**7 GARAGE DOOR - HEAD DETAIL**  
1 1/2" = 1'-0"



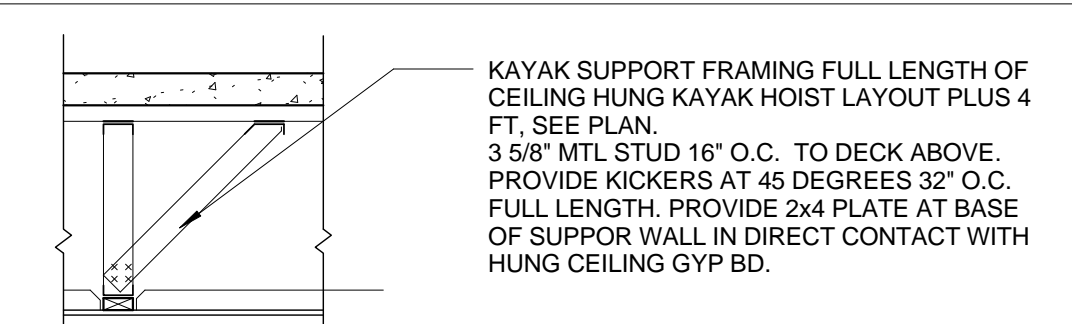
**6 GARAGE DOOR - JAMB DETAIL**  
1 1/2" = 1'-0"



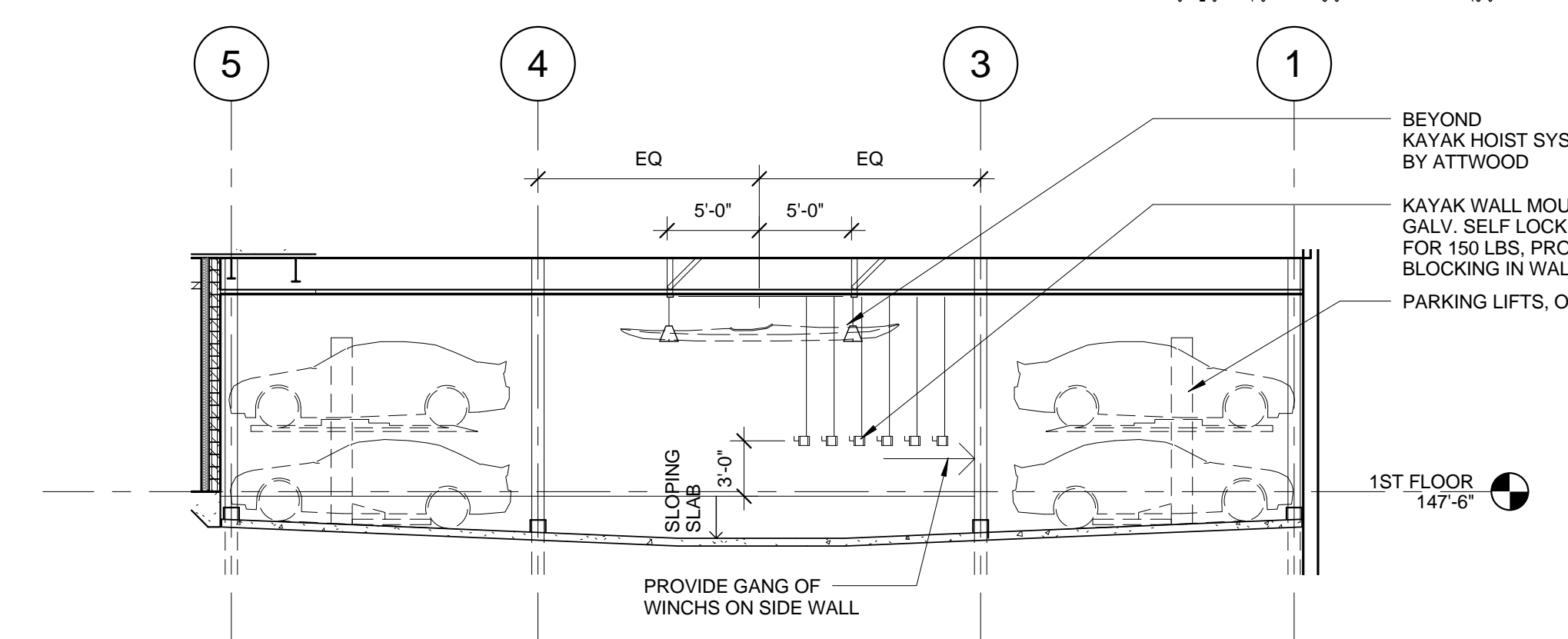
**3 BIKE ELEVATION**  
1/4" = 1'-0"



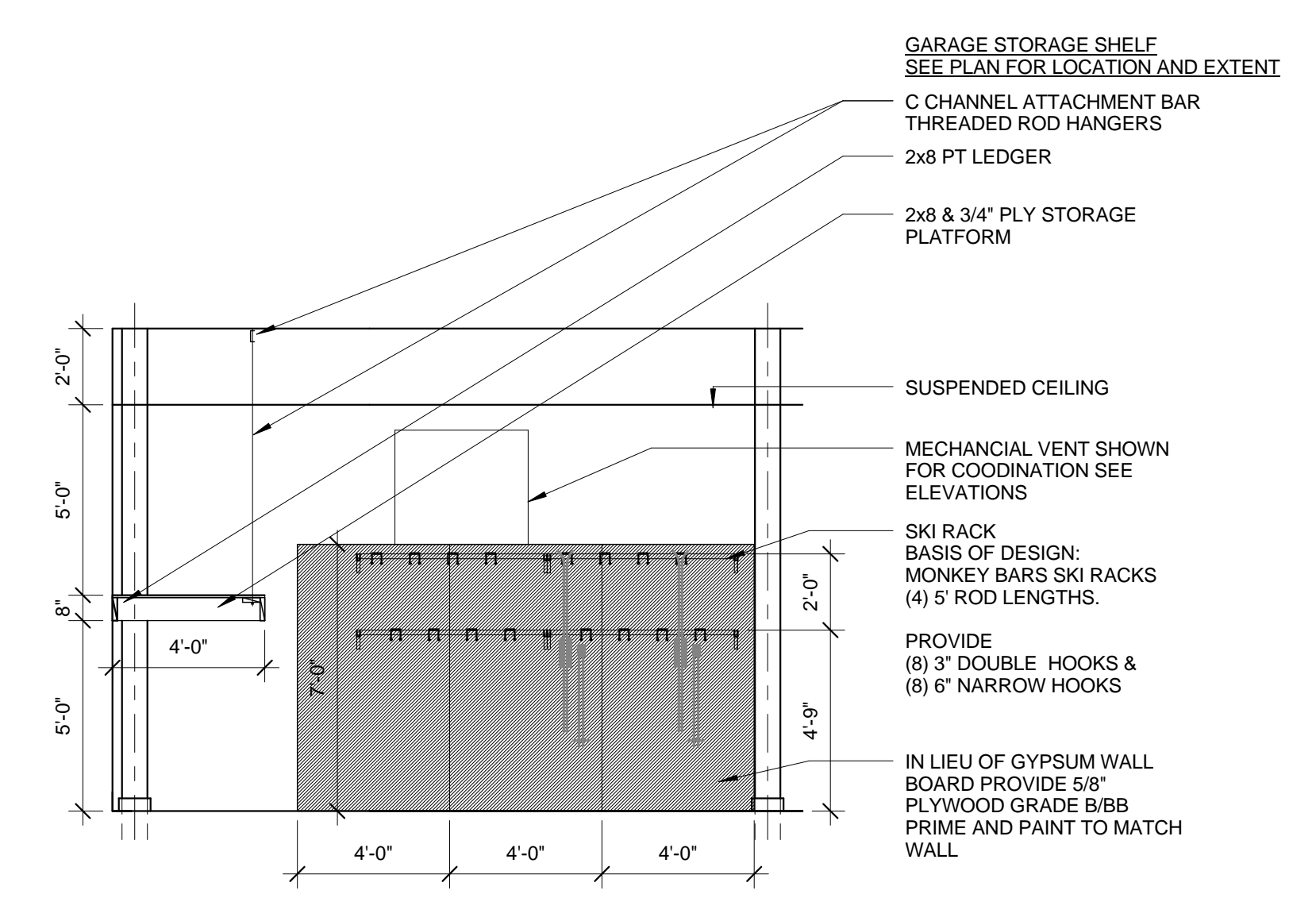
**2 GARAGE - DOG WASH**  
1/4" = 1'-0"



**12 KAYAK SUSPENSION**  
1/2" = 1'-0"



**4 GARAGE SECTION**  
1/8" = 1'-0"



**1 SKI STORAGE & STORAGE SECTION**  
1/4" = 1'-0"