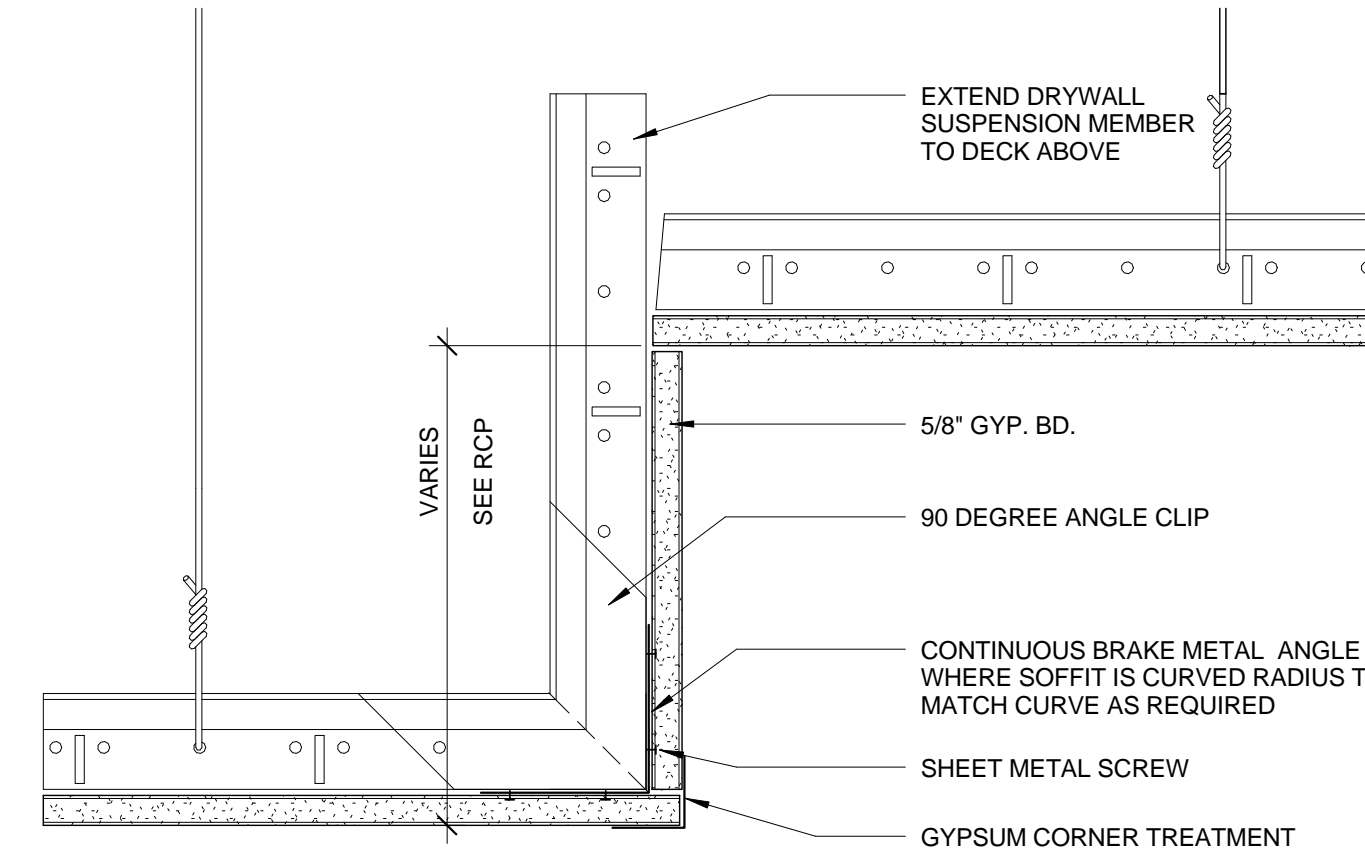


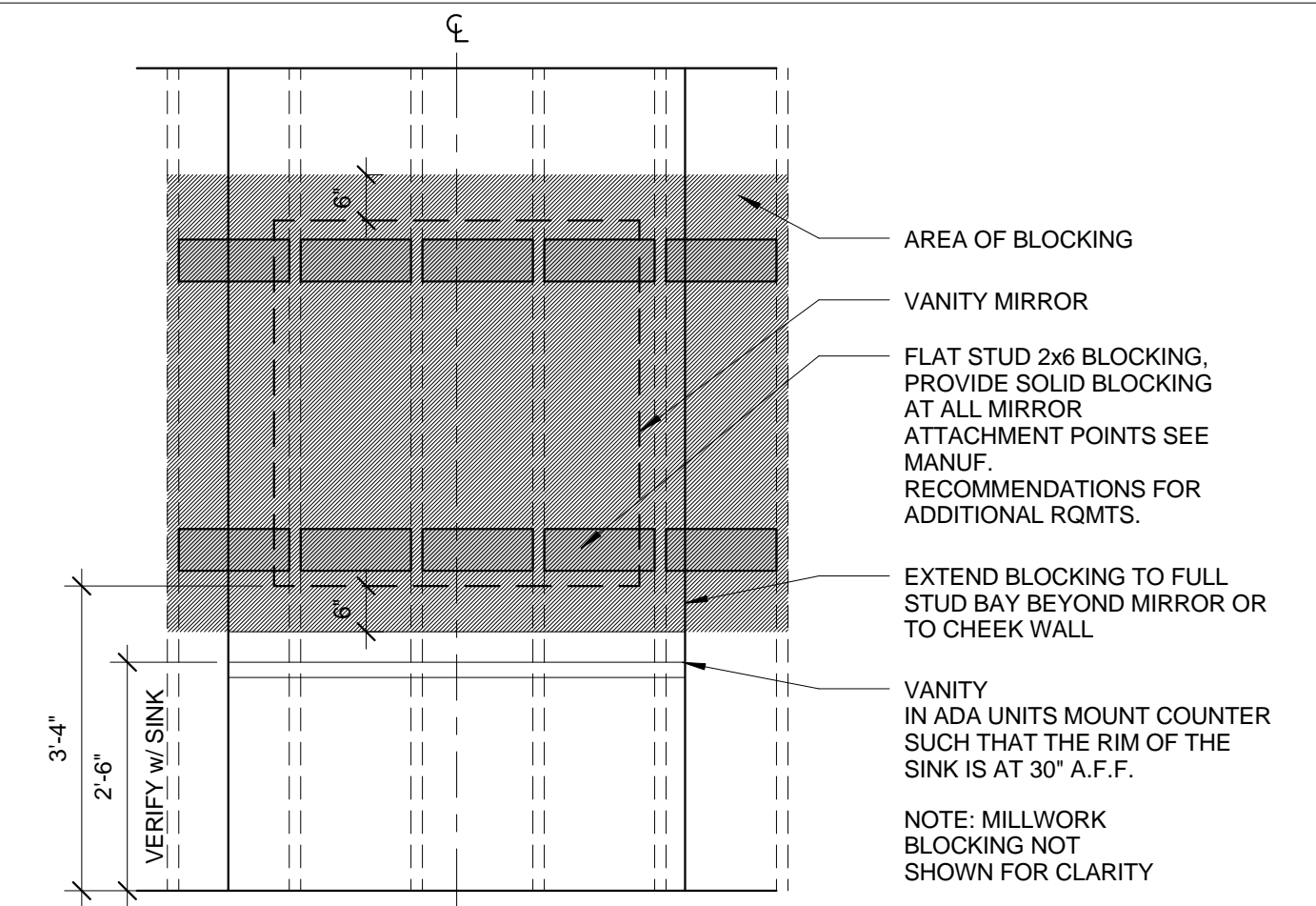
12 | PLAN DETAIL AT SOUND CRITICAL PARTITION

1/4" = 1'-0"



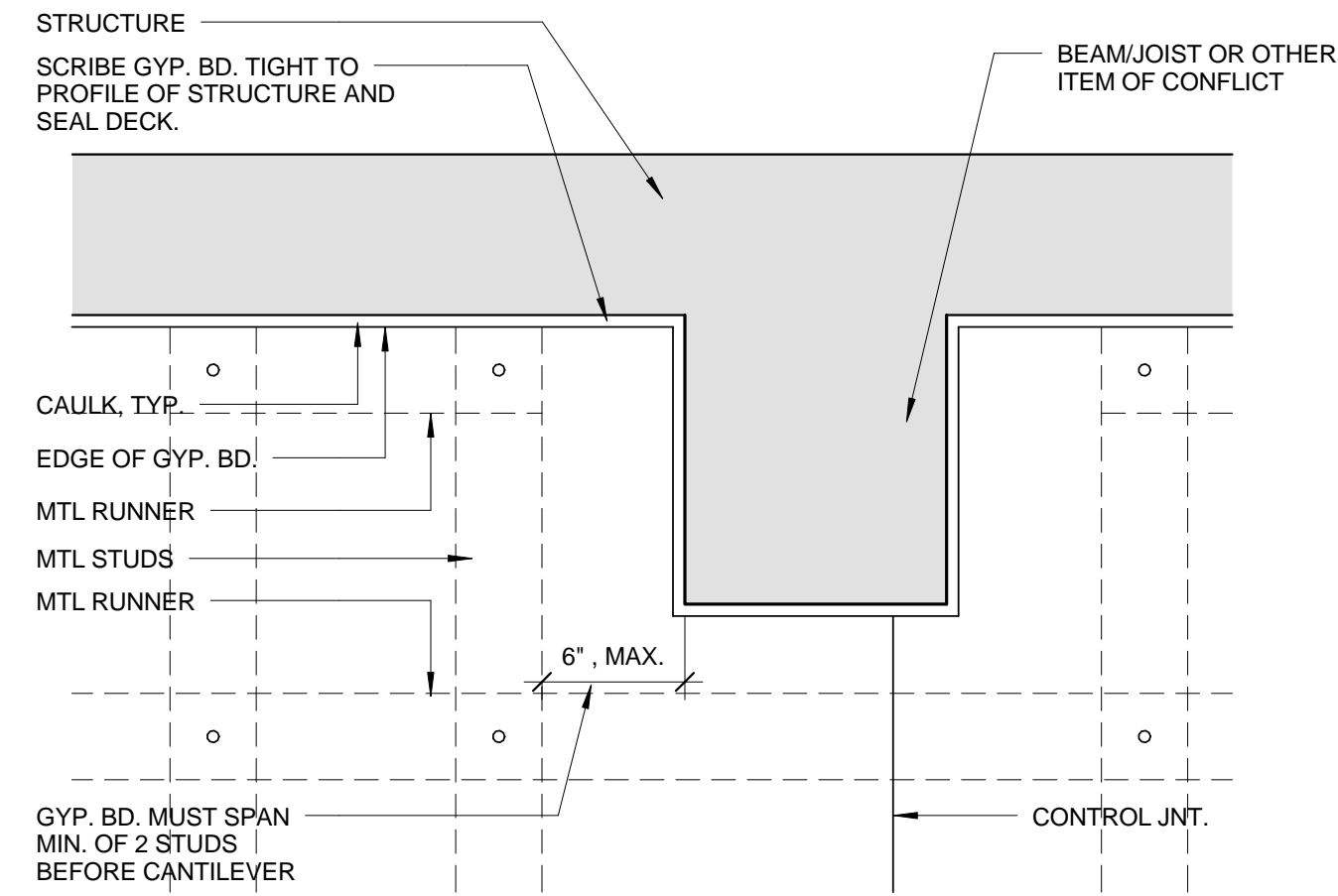
8 | BULKHEAD DETAIL

3" = 1'-0"



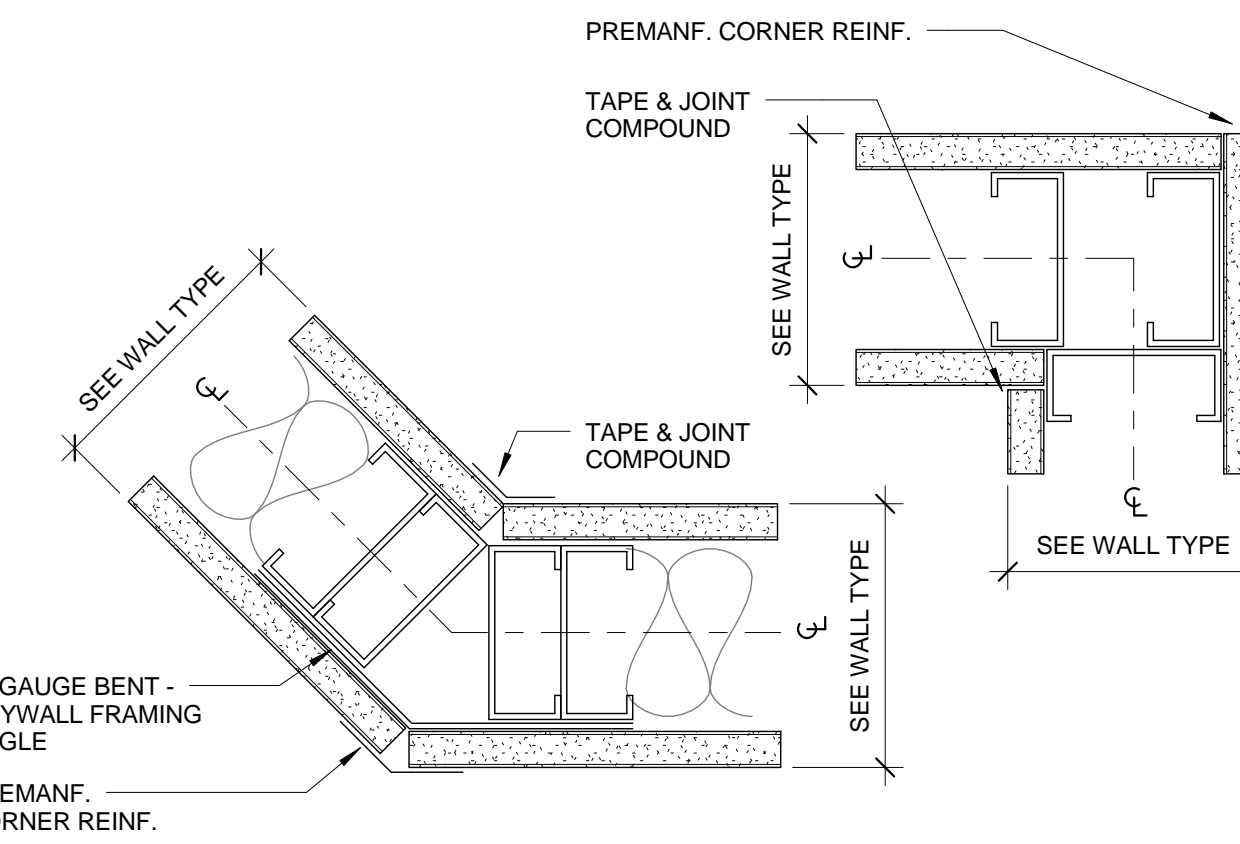
4 | BLOCKING DETAIL - VANITY MIRROR

1/2" = 1'-0"



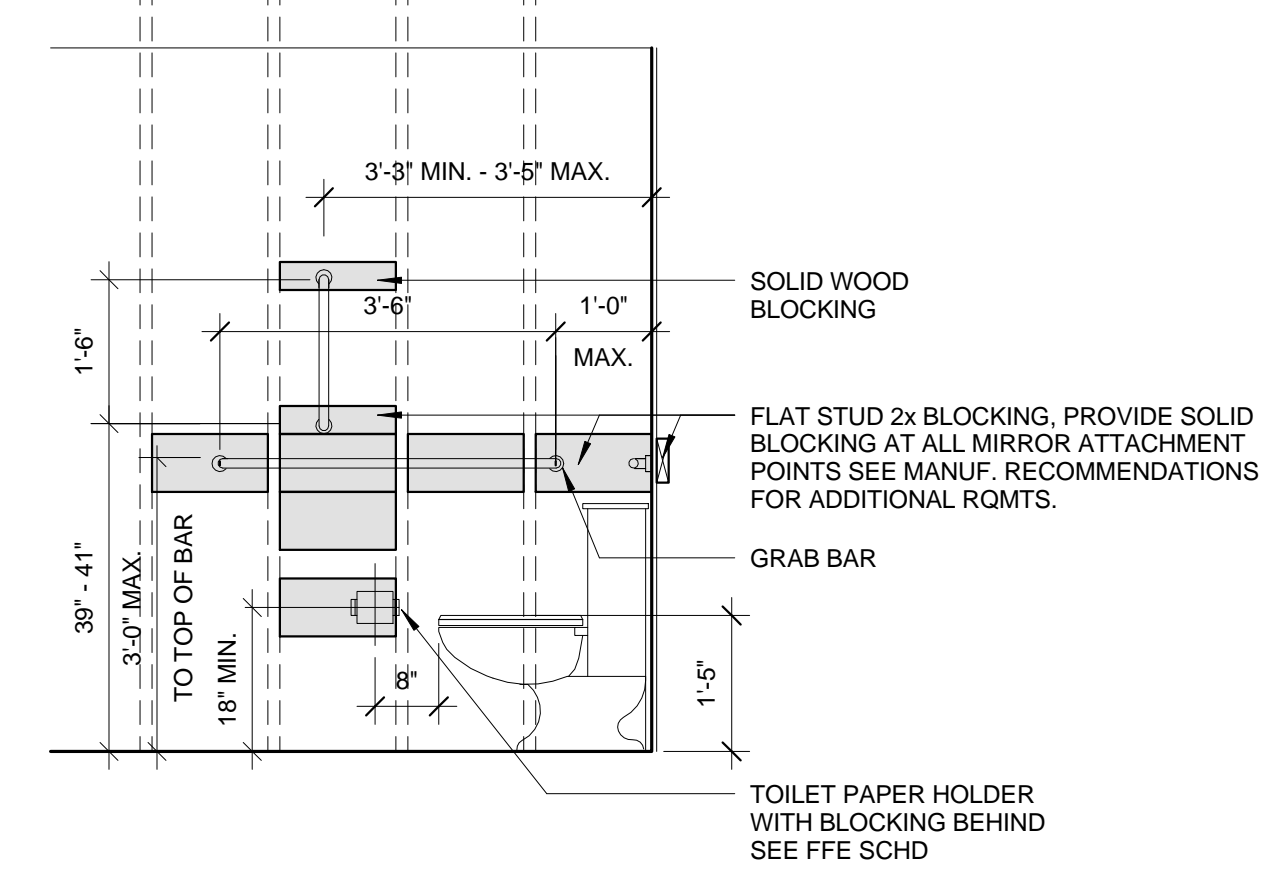
10 | PARTITION PERPENDICULAR TO OBSTRUCTION

1 1/2" = 1'-0"



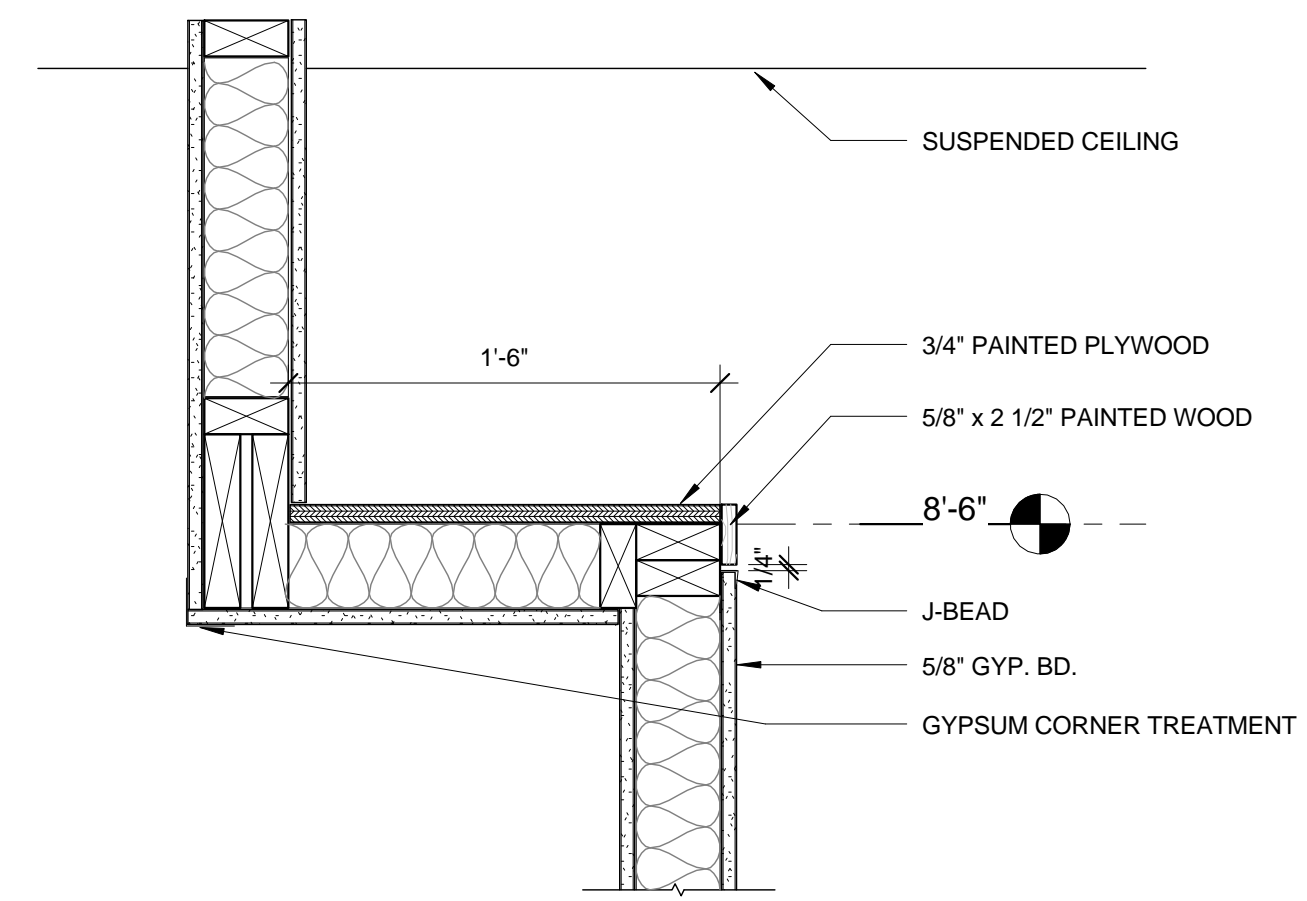
7 | TYPICAL CORNER DETAIL

3" = 1'-0"



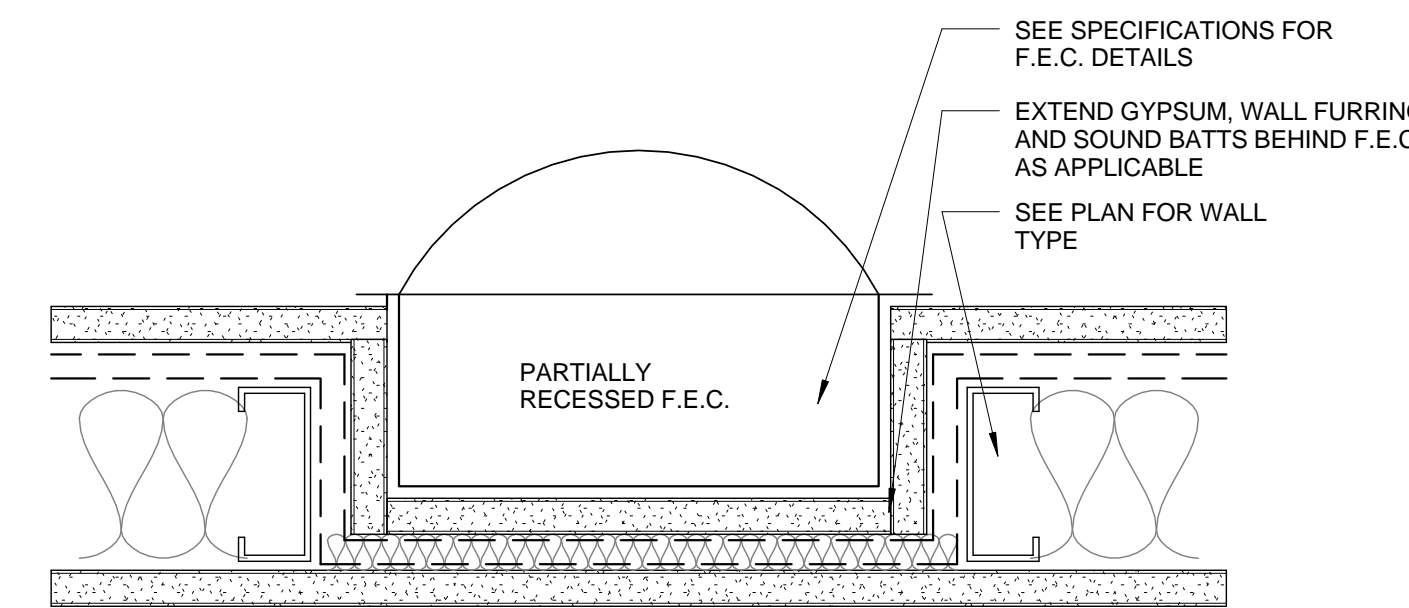
3 | BLOCKING DETAIL - TOILET

1/2" = 1'-0"



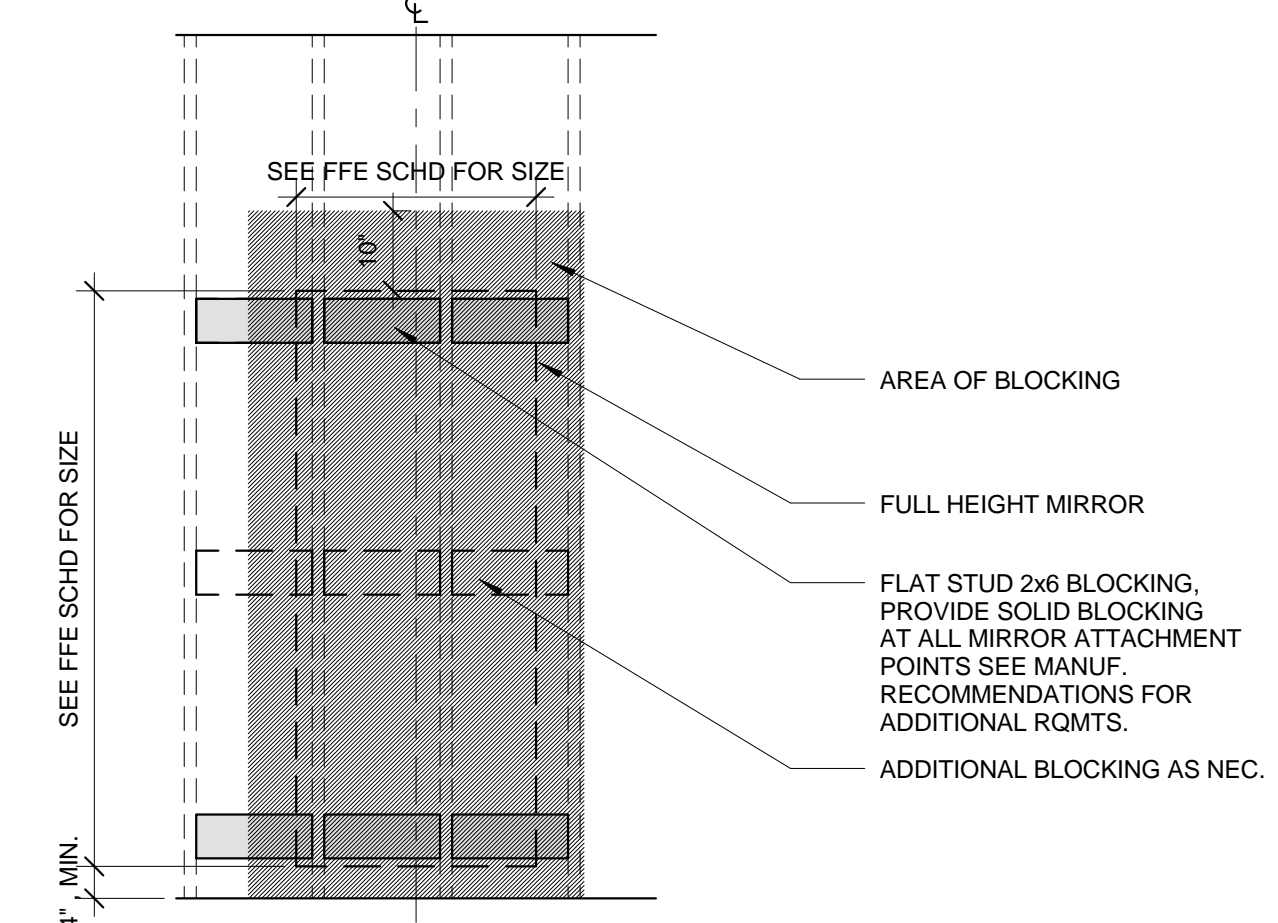
9 | SHELF DETAIL

1 1/2" = 1'-0"



6 | RECESSED F.E.C. CABINET DETAIL

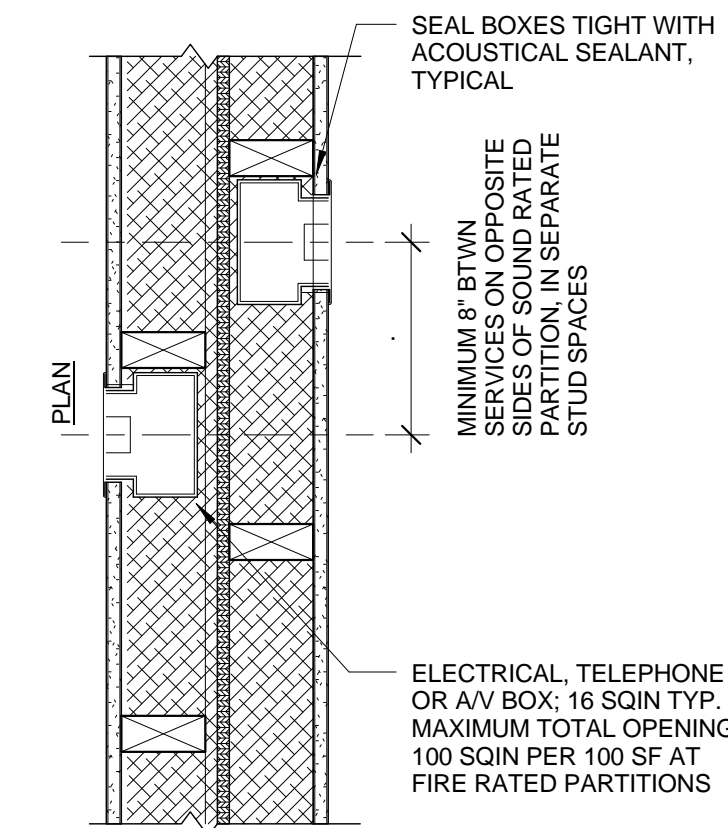
3" = 1'-0"



2 | BLOCKING DETAIL - FULL HEIGHT MIRROR

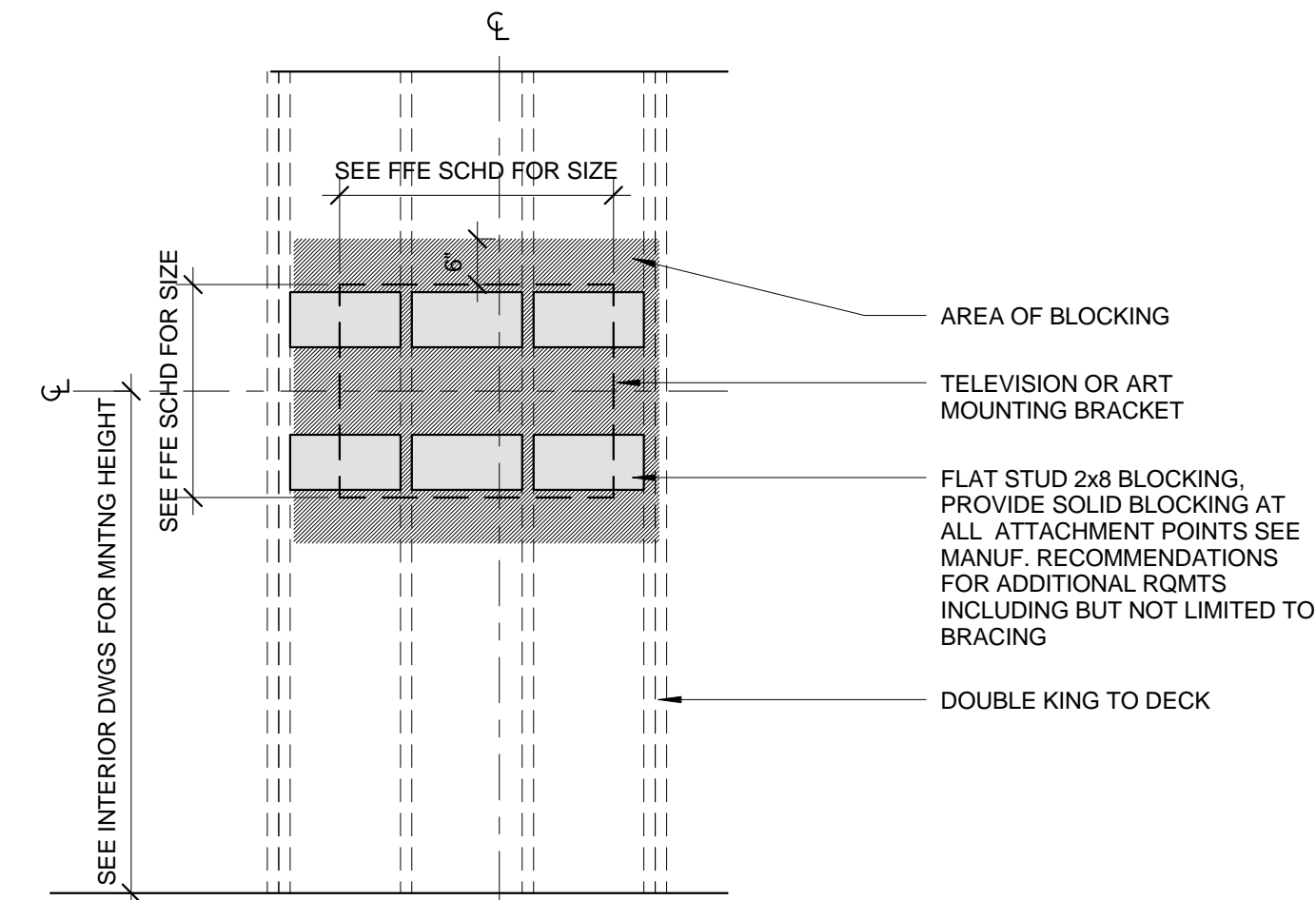
1/2" = 1'-0"

WALL HEAD/ FOOT AT DEMISING



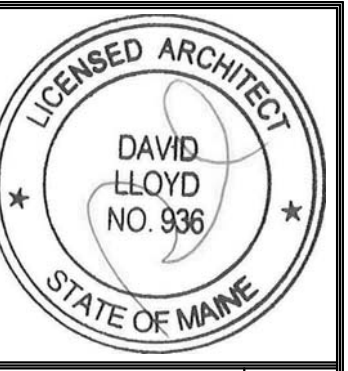
5 | PLAN DETAIL AT DEMISING WALL

1 1/2" = 1'-0"



1 | BLOCKING DETAIL - WALL MOUNTED TV

1/2" = 1'-0"



Prepared For:
118 on Munjoy Hill, LLC
 118 CONGRESS STREET
 PORTLAND, ME 04101

Consultant:
ARCHETYPE architects
 48 Union Wharf Portland, Maine 04101
 (207) 772-6022 Fax (207) 772-4056

Project:
118 ON MUNJOY HILL
 118 CONGRESS STREET
 PORTLAND, MAINE

Revisions:
 Scale: As indicated
 Date: 07 MAR 2014

INTERIOR DETAILS

A4.06