

Prepared For:
118 on Munjoy Hill, LLC
 118 CONGRESS STREET
 PORTLAND, ME 04101

Consultant:

ARCHETYPE architects
 48 Union Wharf Portland, Maine 04101
 (207) 772-6022 Fax (207) 772-4056

Project:

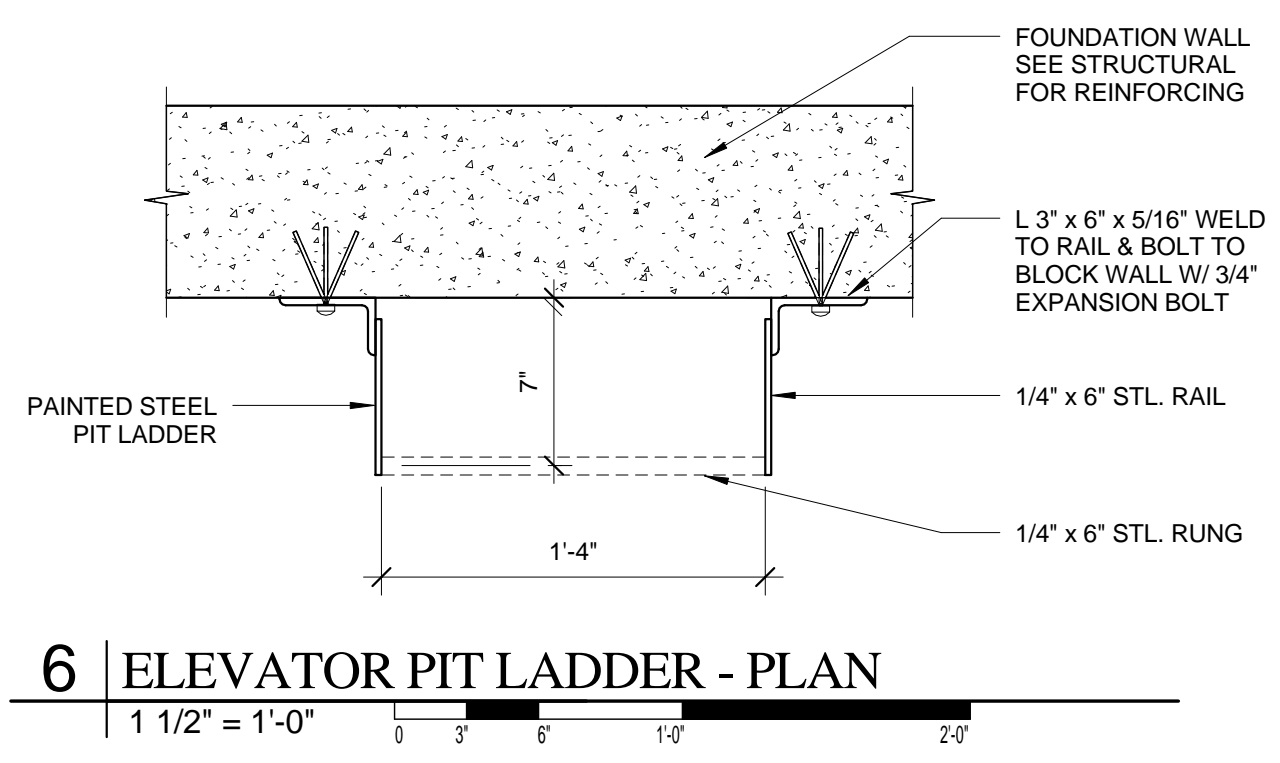
118 ON MUNJOY HILL
 118 CONGRESS STREET
 PORTLAND, MAINE

Revisions:

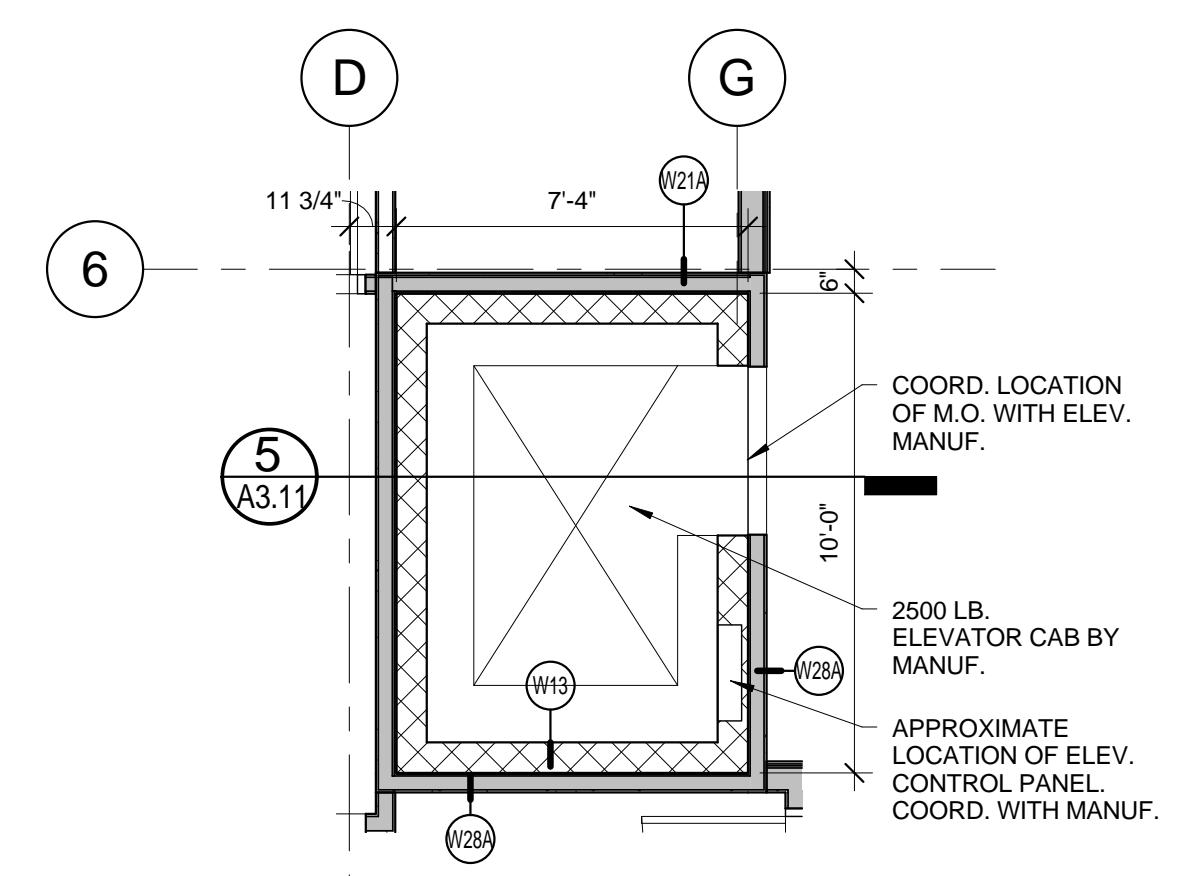
Date: 07 MAR 2014
 Scale: As indicated

ELEVATOR SECTION AND DETAILS

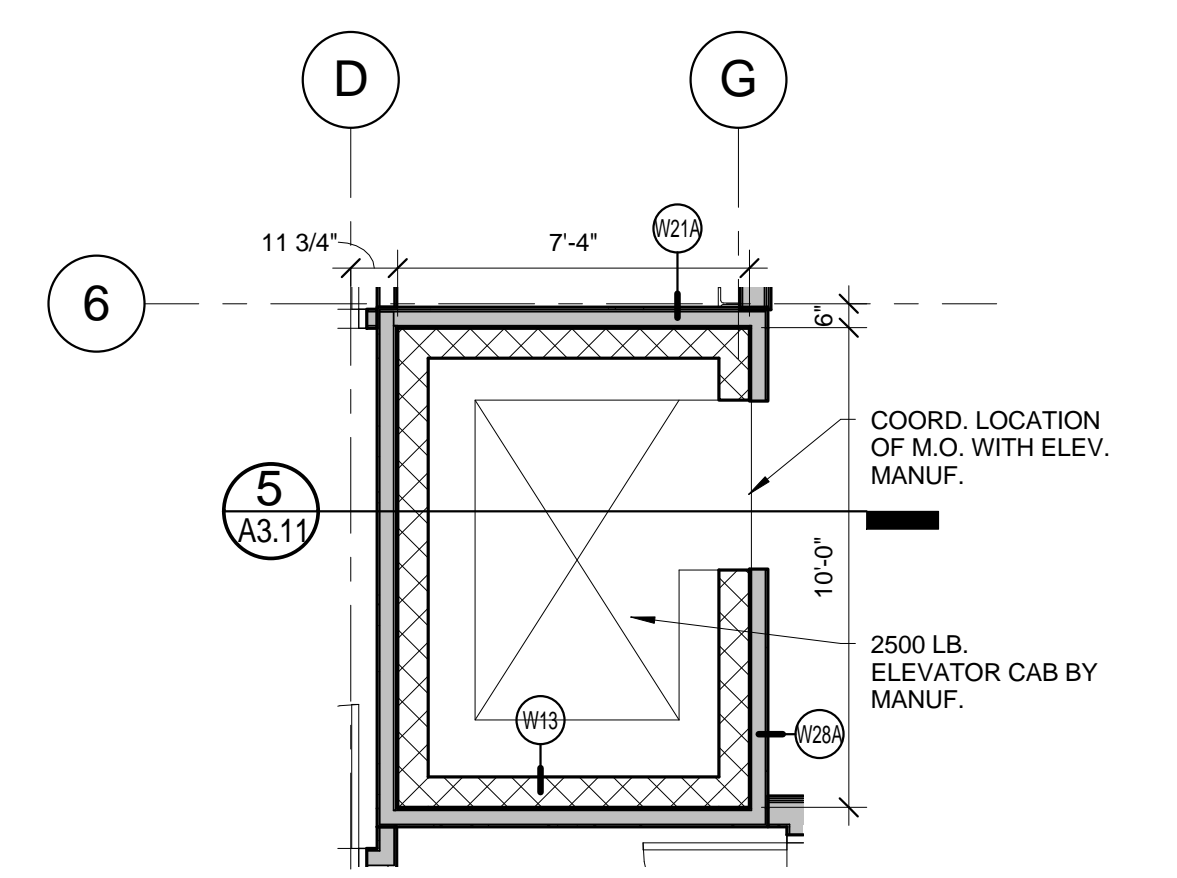
A3.11



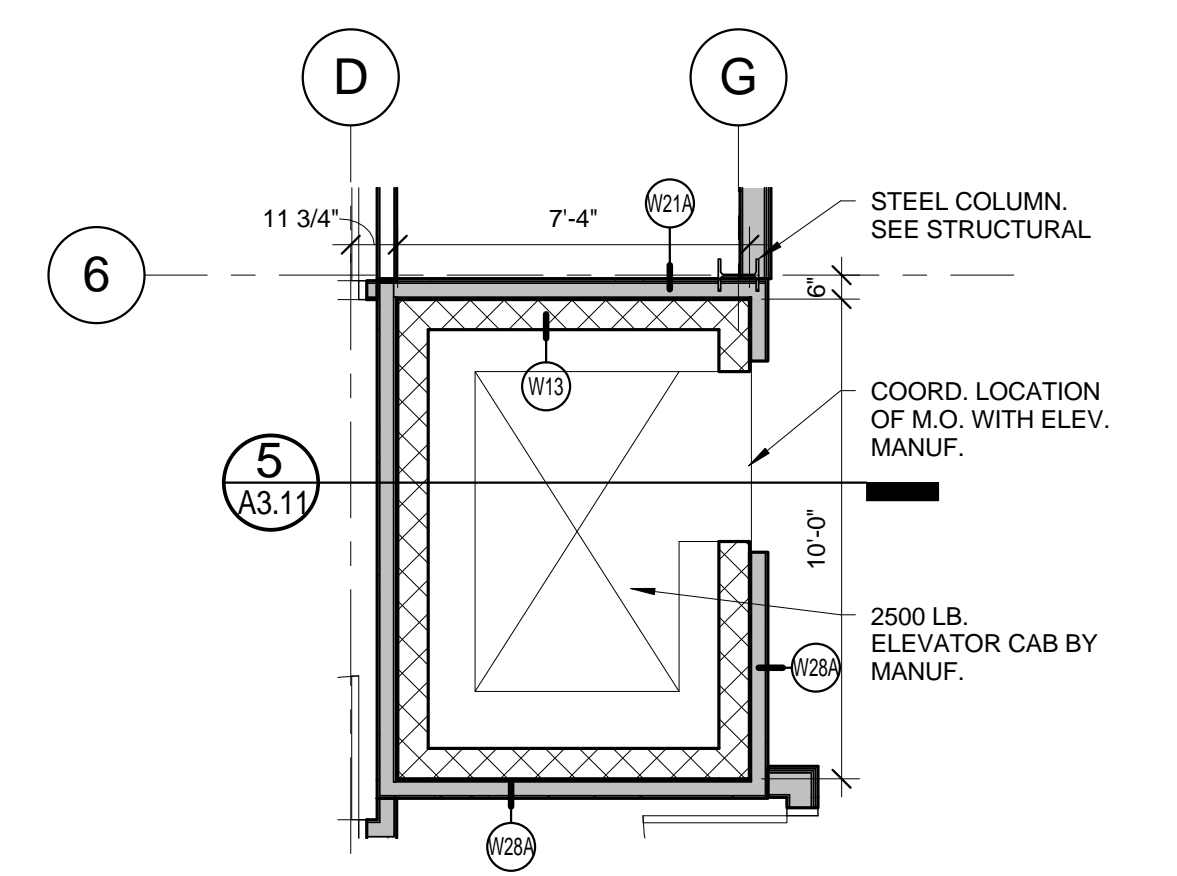
6 ELEVATOR PIT LADDER - PLAN
 1 1/2" = 1'-0"



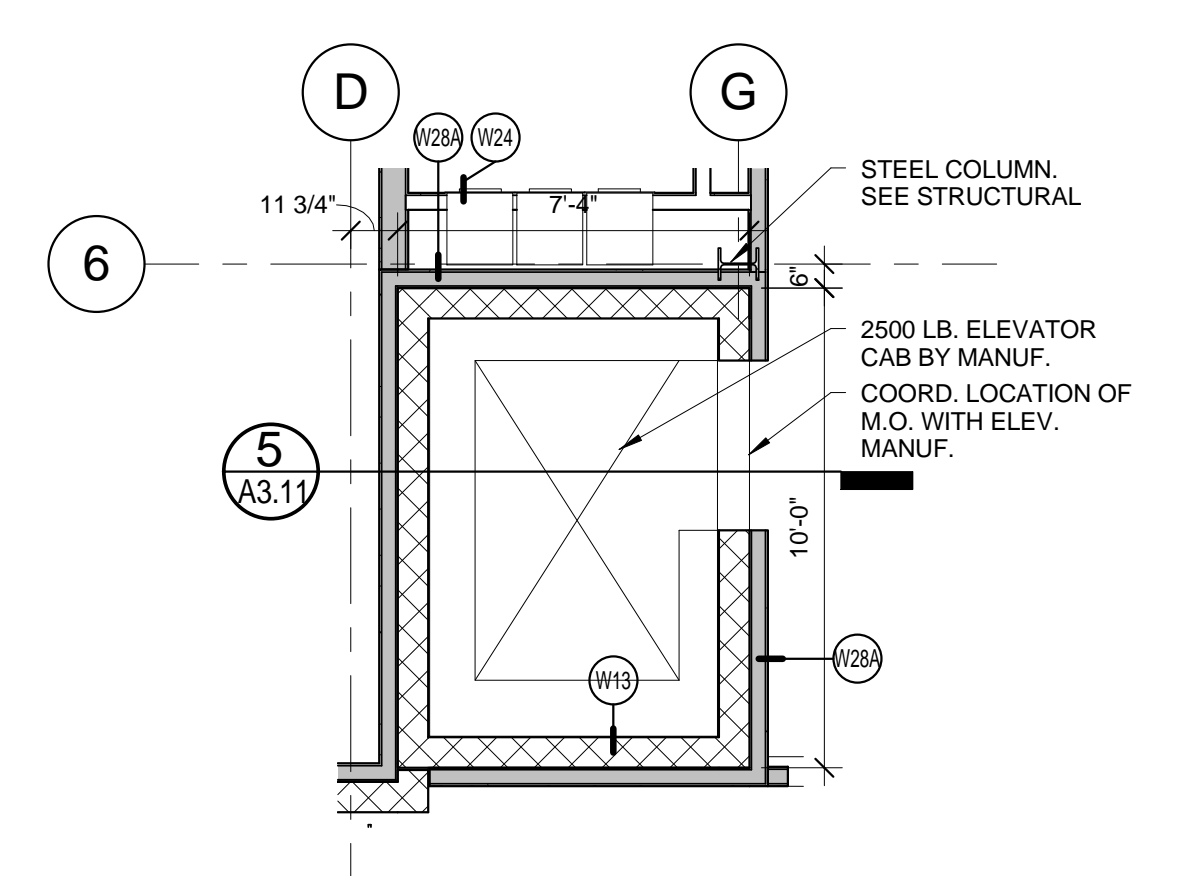
4 ELEVATOR 4TH FLOOR
 1/4" = 1'-0"



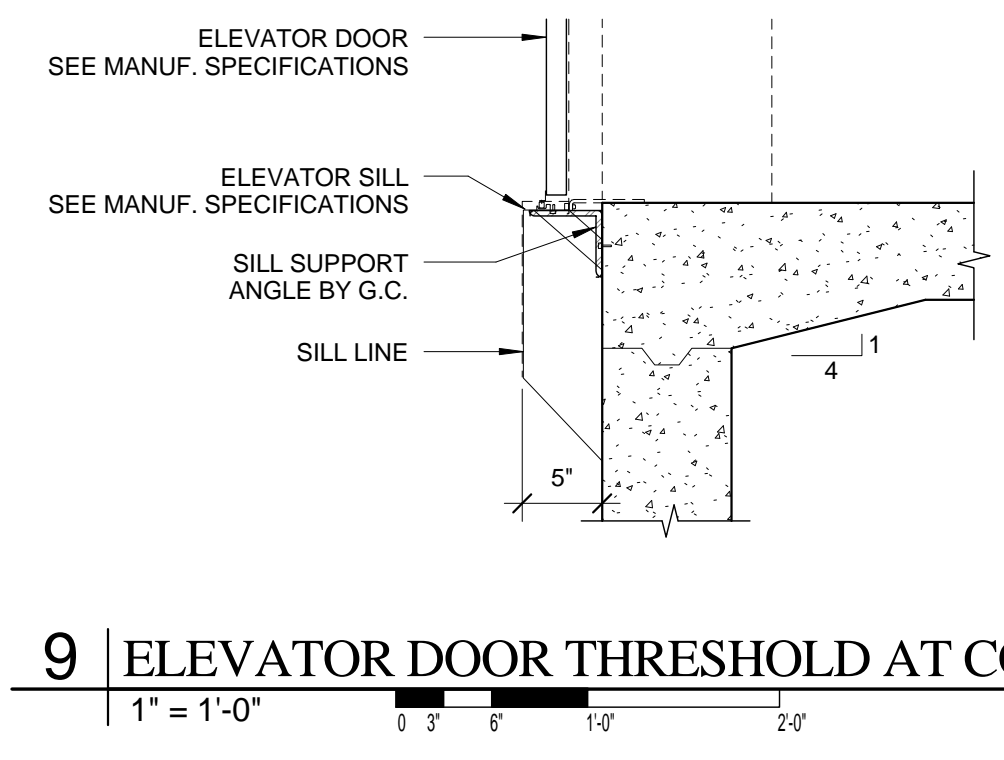
3 ELEVATOR 3RD FLOOR
 1/4" = 1'-0"



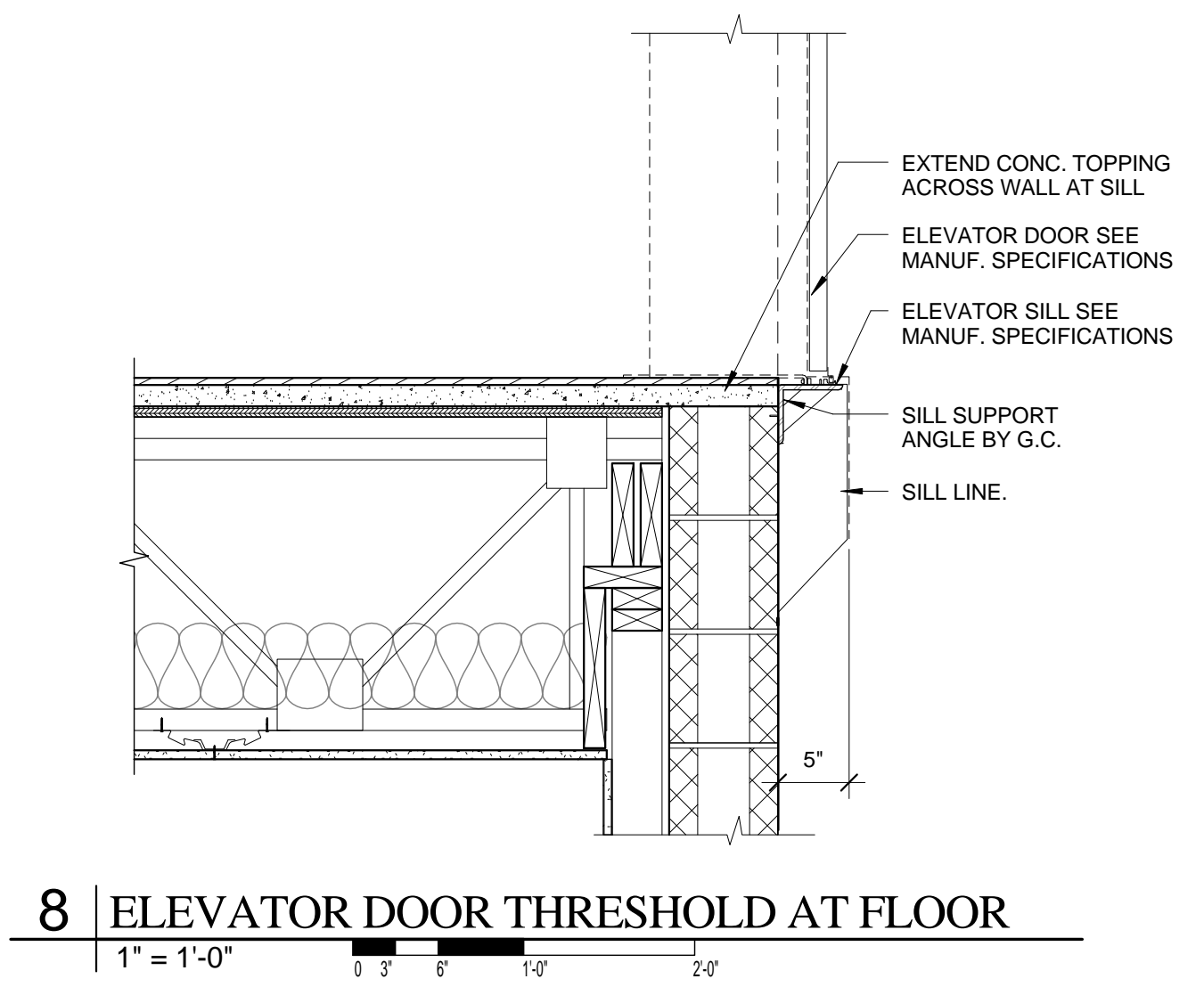
2 ELEVATOR 2ND FLOOR
 1/4" = 1'-0"



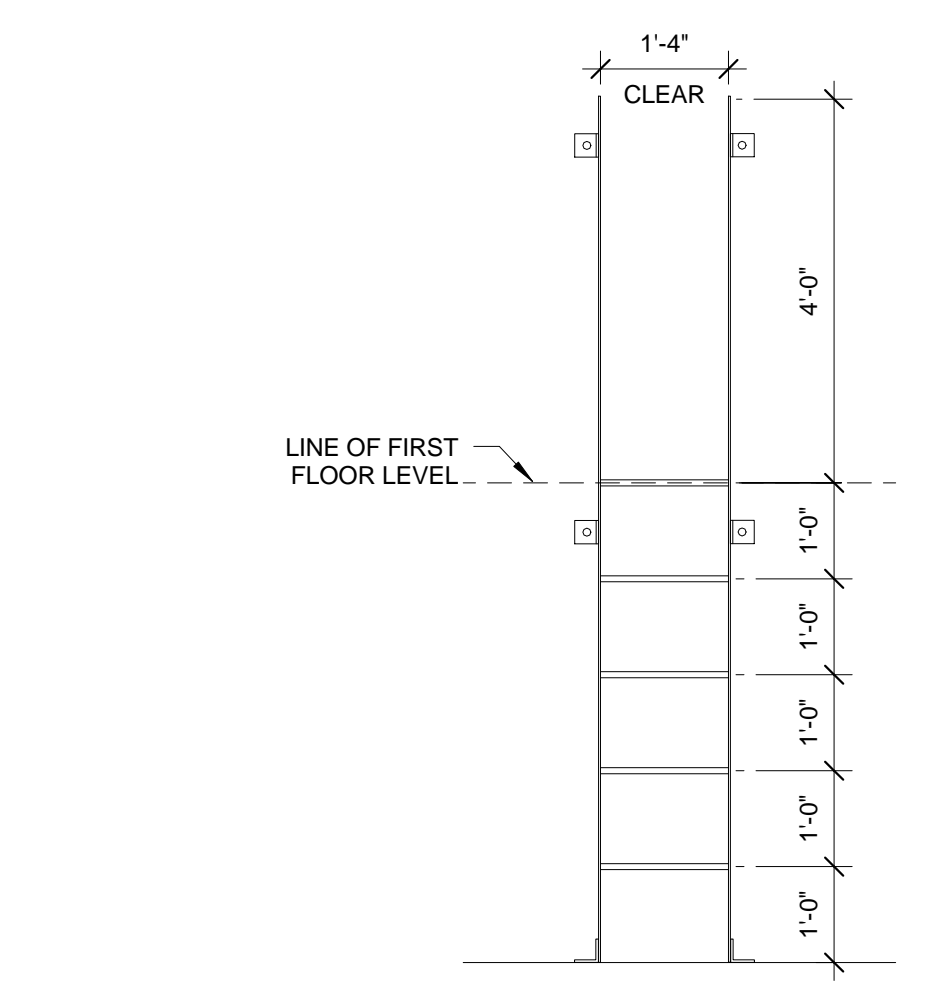
1 ELEVATOR 1ST FLOOR
 1/4" = 1'-0"



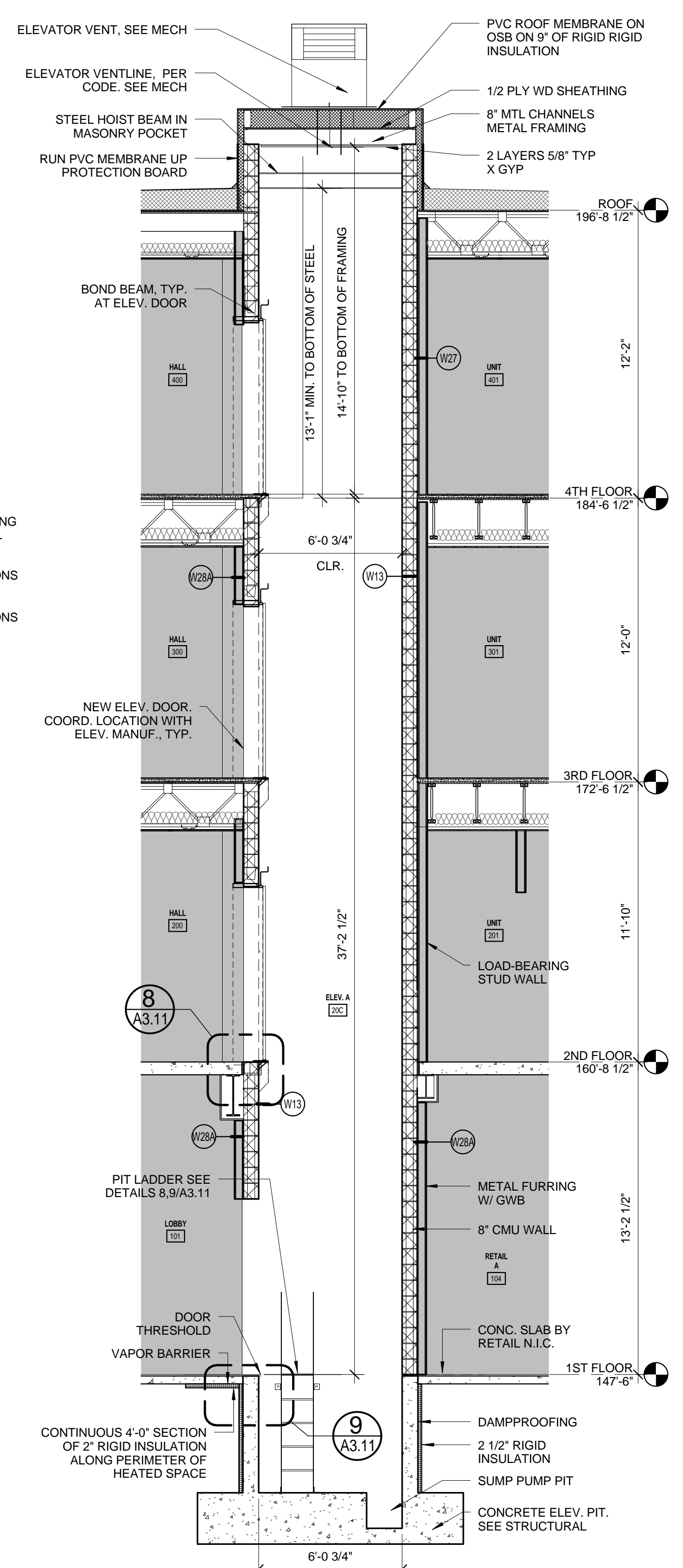
9 ELEVATOR DOOR THRESHOLD AT CONCRETE
 1" = 1'-0"



8 ELEVATOR DOOR THRESHOLD AT FLOOR
 1" = 1'-0"



7 ELEVATOR PIT LADDER - ELEVATION
 1/2" = 1'-0"



5 ELEVATOR SECTION
 1/4" = 1'-0"