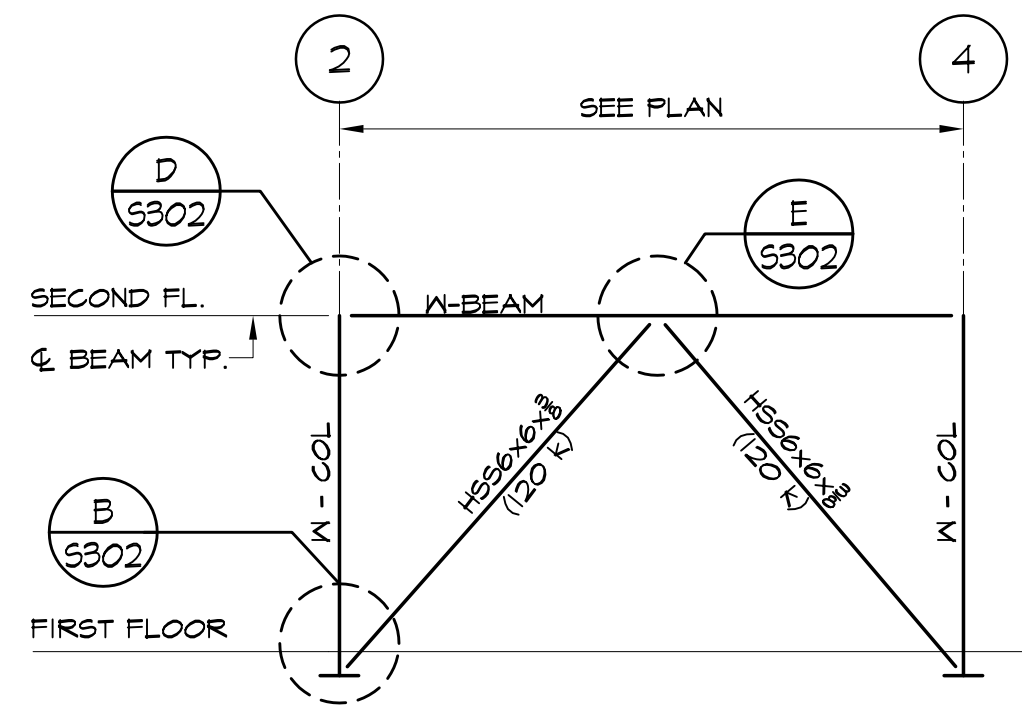
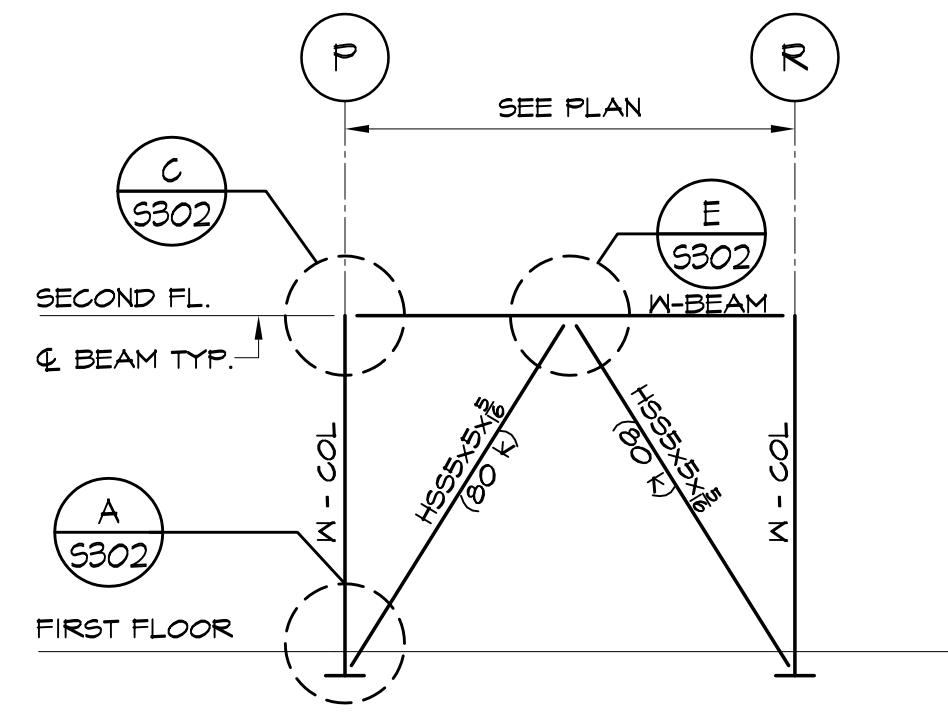


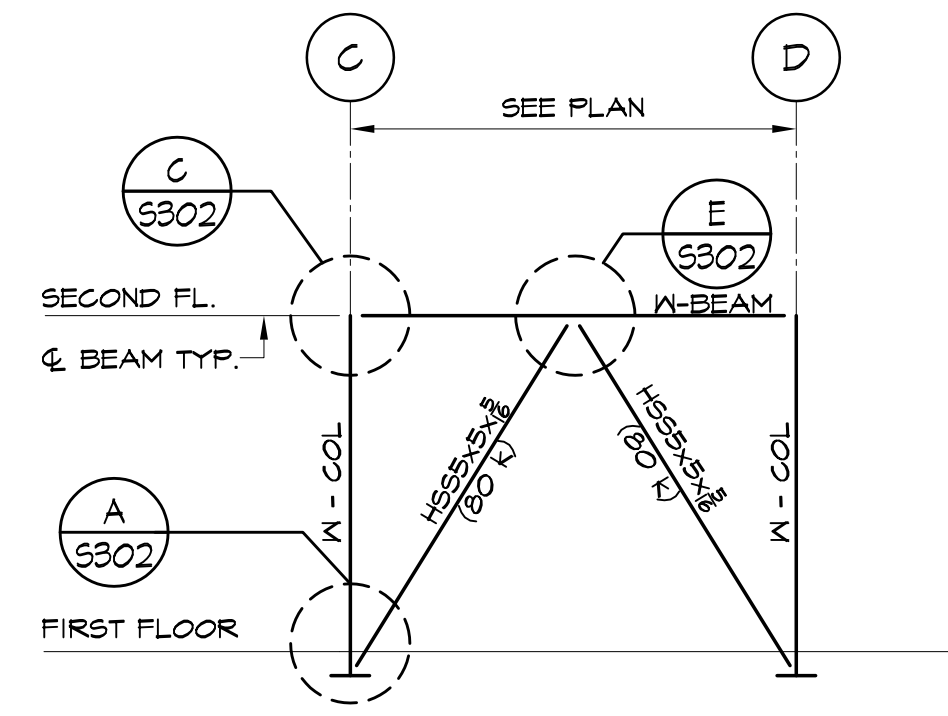
ELEVATION BRACE "A"
1/8"=1'-0" FOR LOCATION SEE PLAN



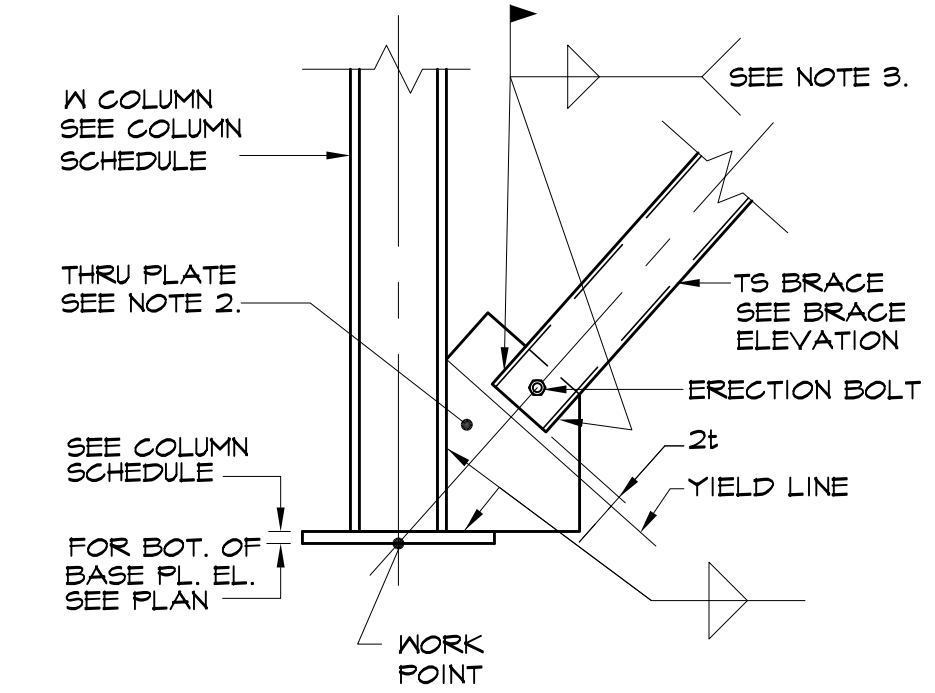
ELEVATION BRACE "B"
1/8"=1'-0" FOR LOCATION SEE PLAN



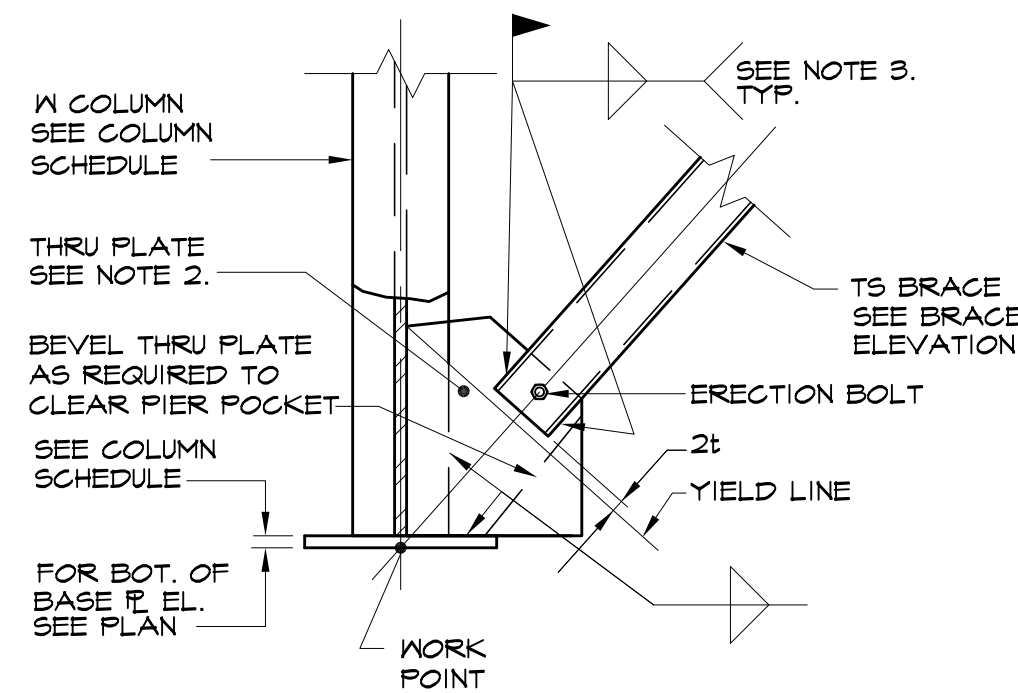
ELEVATION BRACE "C"
1/8"=1'-0" FOR LOCATION SEE PLAN



ELEVATION BRACE "D"
1/8"=1'-0" FOR LOCATION SEE PLAN

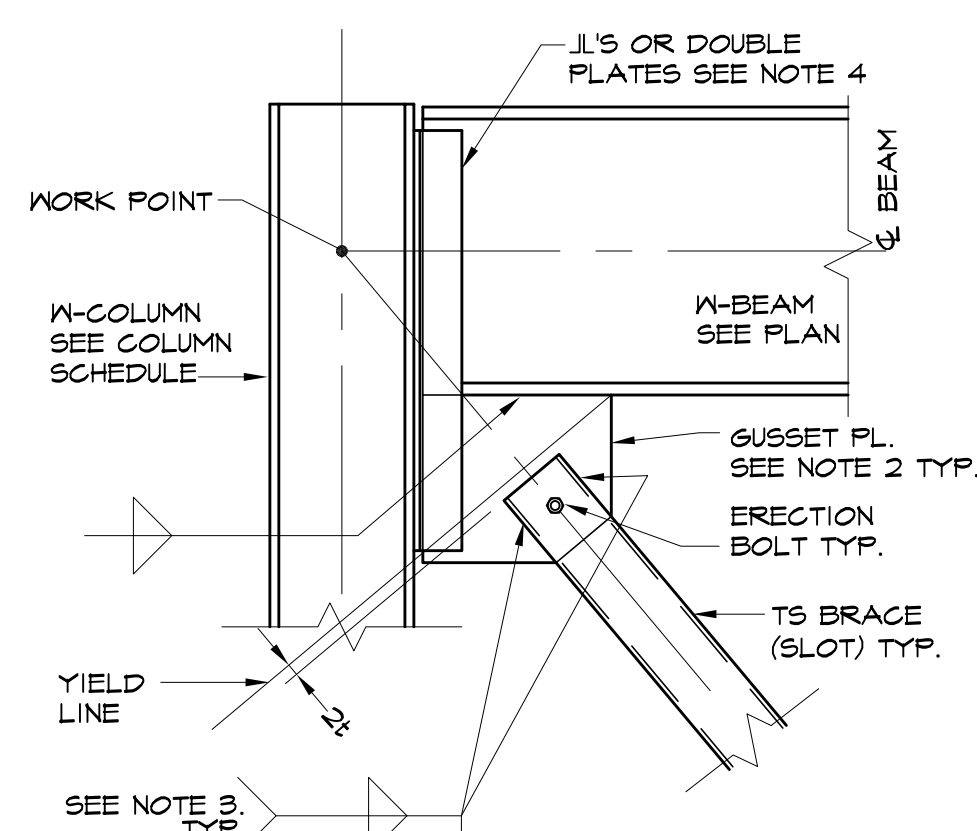


DETAIL A
3/4"=1'-0" (S30)

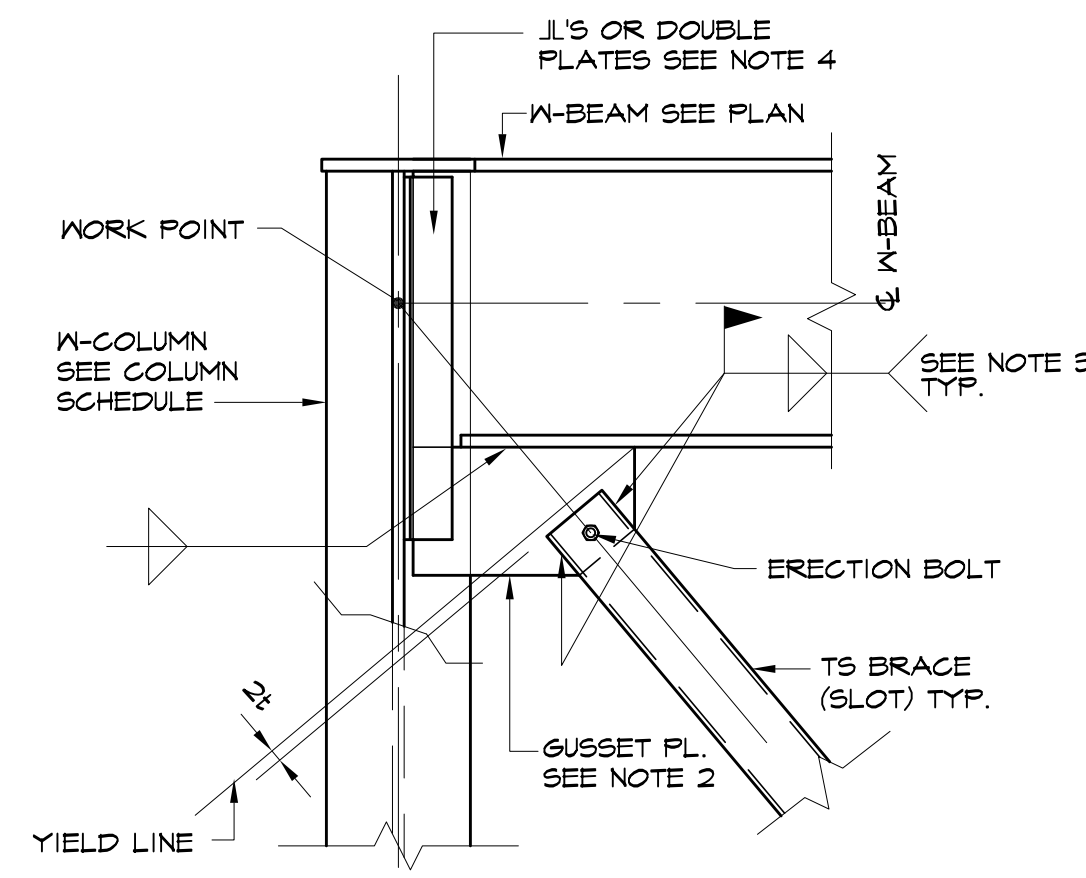


NOTE:
PROVIDE PARTIAL PENETRATION WELDS AT WEB TO PLATE CONNECTIONS

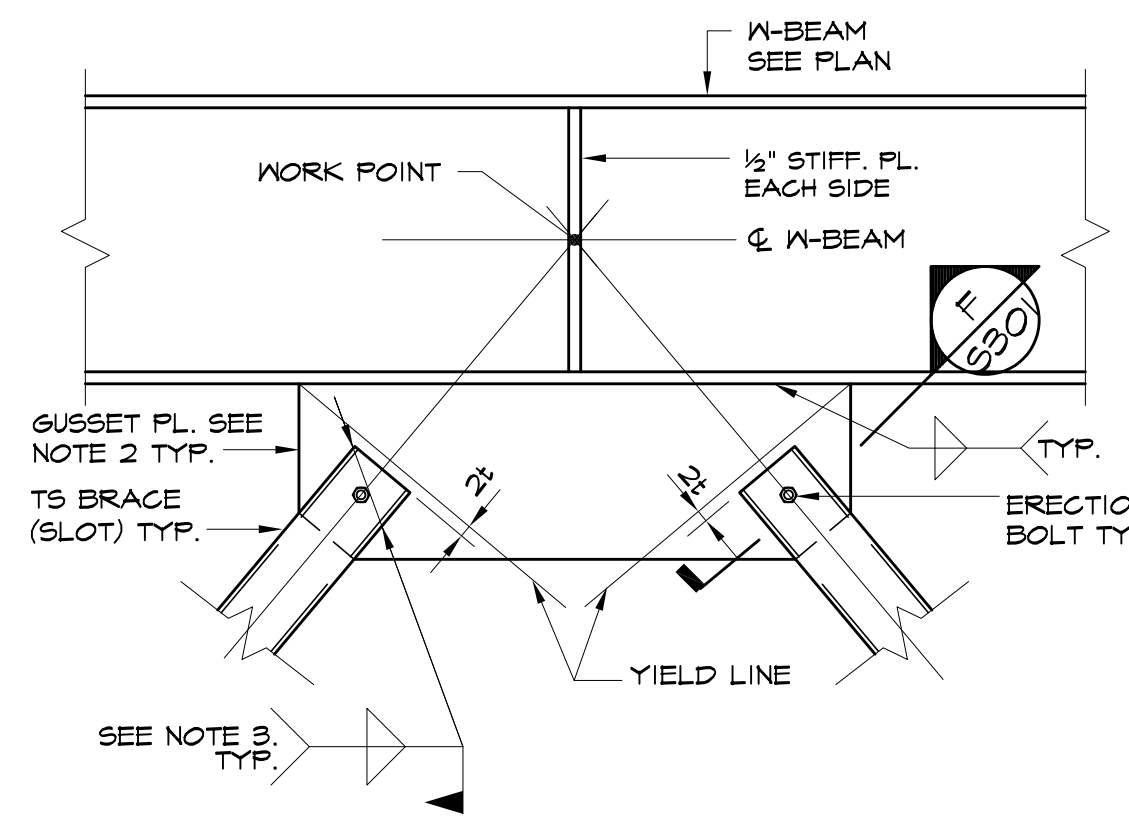
DETAIL B
3/4"=1'-0" (S30)



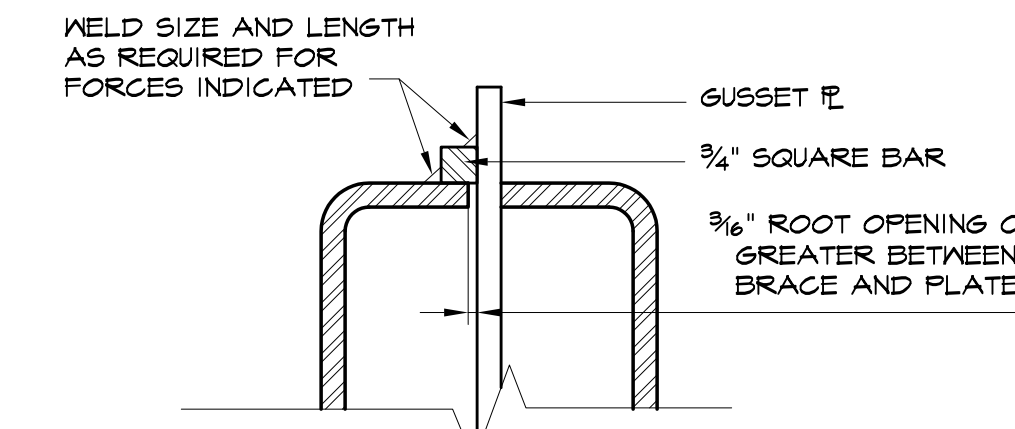
DETAIL C
3/4"=1'-0" (S30)



DETAIL D
3/4"=1'-0" (S30)



DETAIL E
3/4"=1'-0" (S30)



TYPICAL REPAIR OF GAP BETWEEN WELDING SURFACES

NOTE:
IF ROOT OPENING IS 1/8" TO 3/8", INCREASE REQUIRED WELDSIZE BY THE OPENING SIZE.

DETAIL F
3/4"=1'-0" (S30)

NOTE
(105K) ETC. INDICATES FACTORED (LRFD) AXIAL FORCE IN THE BRACE MEMBERS FOR THE USE IN CONNECTION DESIGN TO CHANGE LRFD LOAD TO ASD DIVIDE LRFD BY 1.5 (LRFD/1.5=ASD)

- BRACE DETAIL NOTES:**
1. FOR NUMBER, SIZE AND LENGTHS OF ANCHOR BOLTS SEE BASE PLATE DETAILS
 2. ALL BRACE GUSSET PLATES TO BE 1/2" THICK MIN.
 3. DETAILER TO PROVIDE SIZE AND LENGTH OF FIELD FILLET WELDS OF HSS BRACE TO PLATES ON THE ERECTION DRAWINGS.
 4. SHEAR CAPACITY OF CONNECTION TO BE BRACING LOAD PLUS BEAM SHEAR INDICATED ON PLANS.
 5. DETAILER TO REVIEW INSTALLATION OF BRACE MEMBER, SUBMIT DIAGRAM INDICATING HOW BRACE WILL FIT.

STATE OF MAINE
MANTAS VEITAS
PROFESSIONAL ENGINEER

Prepared For:
118 on Munjoy Hill, LLC
118 CONGRESS STREET
PORTLAND, ME 04101

Consultant:
VEITAS VEITAS engineers
680 Granite Street, Suite 10184
TEL: (207) 772-4056 FAX: (207) 772-4056

Architect:
ARCHETYPE architects
48 Union Wharf Portland, Maine 04101
(207) 772-6022 Fax (207) 772-4056

Project:
118 ON MUNJOY HILL
118 CONGRESS STREET
PORTLAND, MAINE

Revisions:
100% CONSTRUCTION DOCUMENTS

Date: 5 MAR 2014
Scale: As indicated

Column and Pier Schedules and Details

S3.02