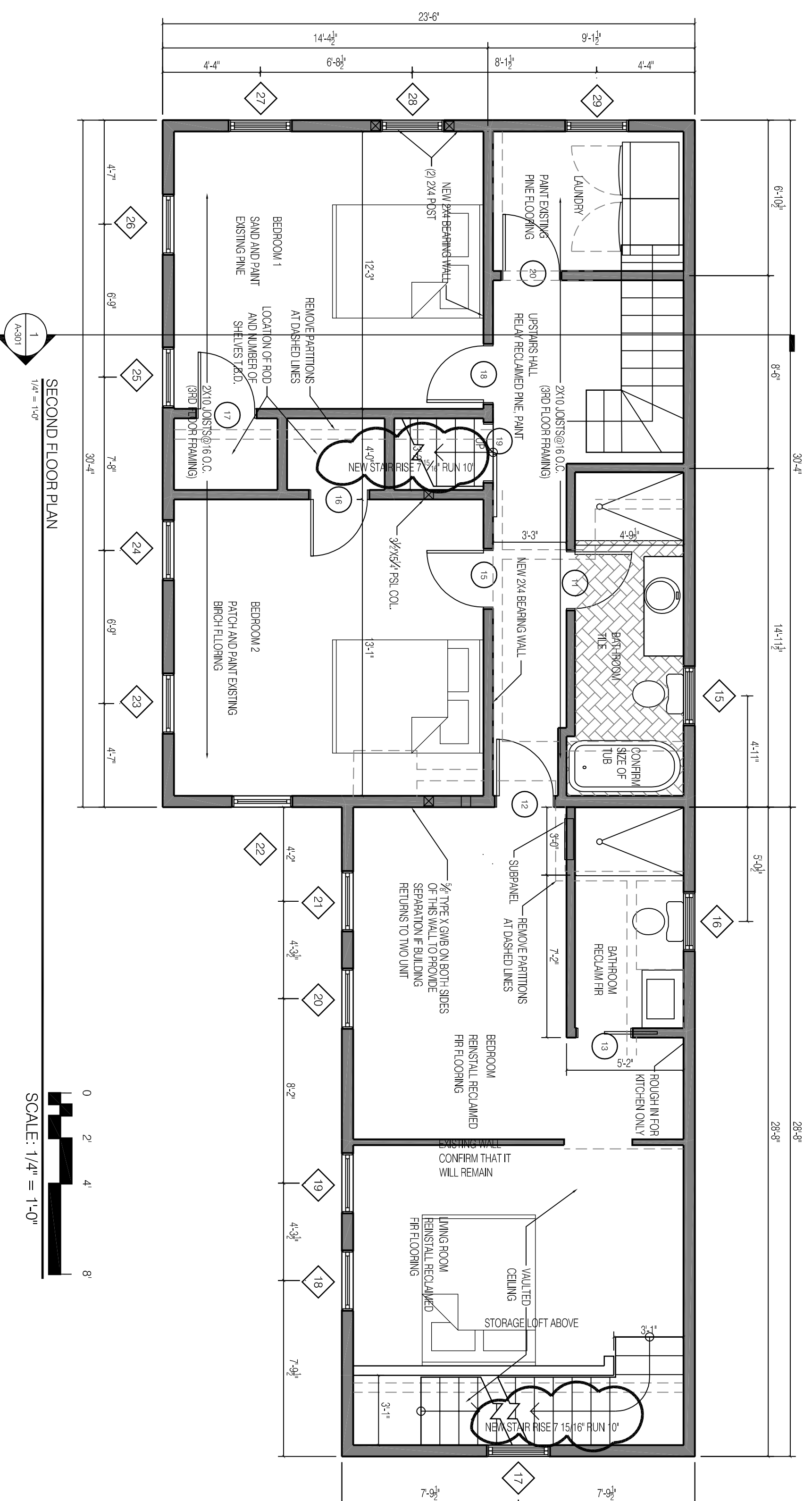
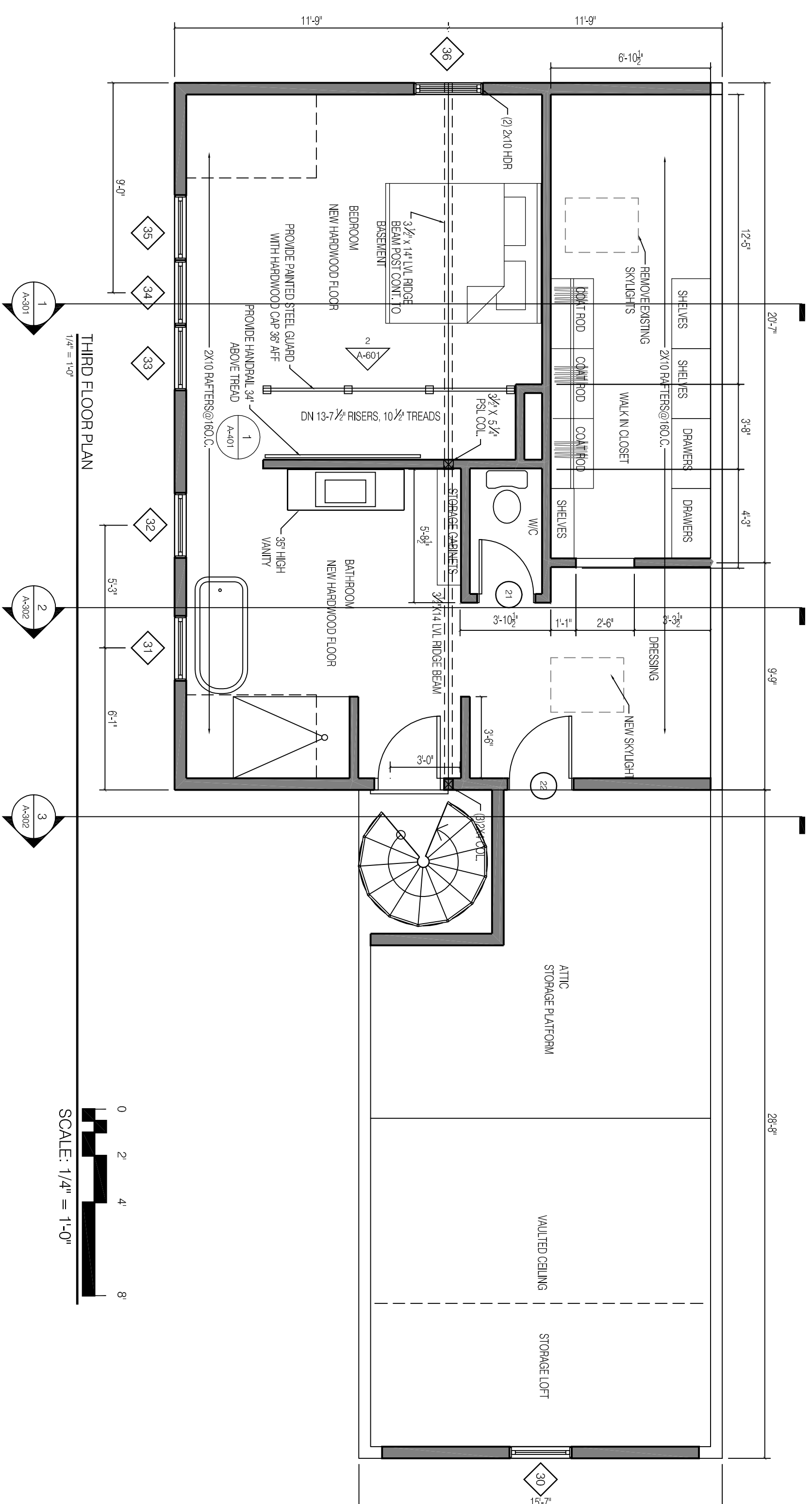


RENOVATION NOTES:
 ALL CONSTRUCTION TO CONFORM TO IRC 2012, NFPA 101 2012.
 INSULATE ALL OPEN WALLS TO R-21 MINIMUM.
 REPLACE ALL OLD WIRING AND LIGHTING FIXTURES.
 REPLACE ALL PLUMBING.
 REPLACE BOILER WITH NEW HIGH EFFICIENCY MODULATING GAS FIRED BOILER.
 INSTALL NEW PANEL RADIATORS.
 CONSULT WITH OWNER ON SAVING WOOD FLOORS WHERE POSSIBLE.
 INFORM OWNER AND DESIGNER OF ANY STRUCTURAL DEFICIENCIES DISCOVERED DURING CONSTRUCTION.



MARK	DOOR			GLAZING	FIRE RATING LABEL	NOTES
	WD	HGT	THK			
2	2'-0"	7'-0"	1 3/4"	--	?	?
1	3'-0"	6'-8"	1 3/4"	--	TEMPERED INSULATED	--
3	2'-6"	6'-8"	1 3/8"	--	--	--
4	3'-0"	7'-0"	1 3/8"	--	--	--
5	2'-8"	6'-8"	1 3/8"	--	--	--
6	2'-8"	6'-8"	NA	--	--	Cased opening
7	2'-8"	6'-8"	1 3/4"	--	TEMPERED INSULATED	--
8	2'-8"	6'-8"	1 3/4"	--	TEMPERED INSULATED	--
9	6'-8"	7'-0"	NA	--	--	--
10	6'-8"	7'-0"	NA	--	--	Cased opening
11	2'-6"	6'-8"	1 3/8"	--	--	--
12	2'-6"	6'-8"	1 3/8"	--	--	--
13	2'-4"	6'-8"	1 3/8"	--	--	--
15	2'-6"	6'-8"	1 3/8"	--	--	--
16	2'-6"	6'-8"	1 3/8"	--	--	--
17	2'-6"	6'-8"	1 3/8"	--	--	--
18	2'-6"	6'-8"	1 3/8"	--	--	--
19	2'-8"	6'-8"	1 3/8"	--	--	--
20	2'-6"	6'-8"	1 3/8"	--	--	--
21	2'-4"	6'-8"	1 3/8"	--	--	--
22	2'-8"	5'-8"	1 3/8"	--	--	--

DOOR AND FRAME SCHEDULE

SECOND AND THIRD FLOOR PLANS

PERMIT SET

29 ATLANTIC

SUSAN GRISANTI
 75 Market Street, Suite 203, Portland, ME

PROSPECT
RD
 DESIGN
 58 CORSE ST. PORTLAND, ME
 WWW.PROSPECTDESIGN.ME
 T: 207-749-7400

A-102

SHEET TITLE	SECOND AND THIRD FLOOR PLANS
REVISION	
DESIGNER	SGR/MS/BB
DATE	APR 23, 2014