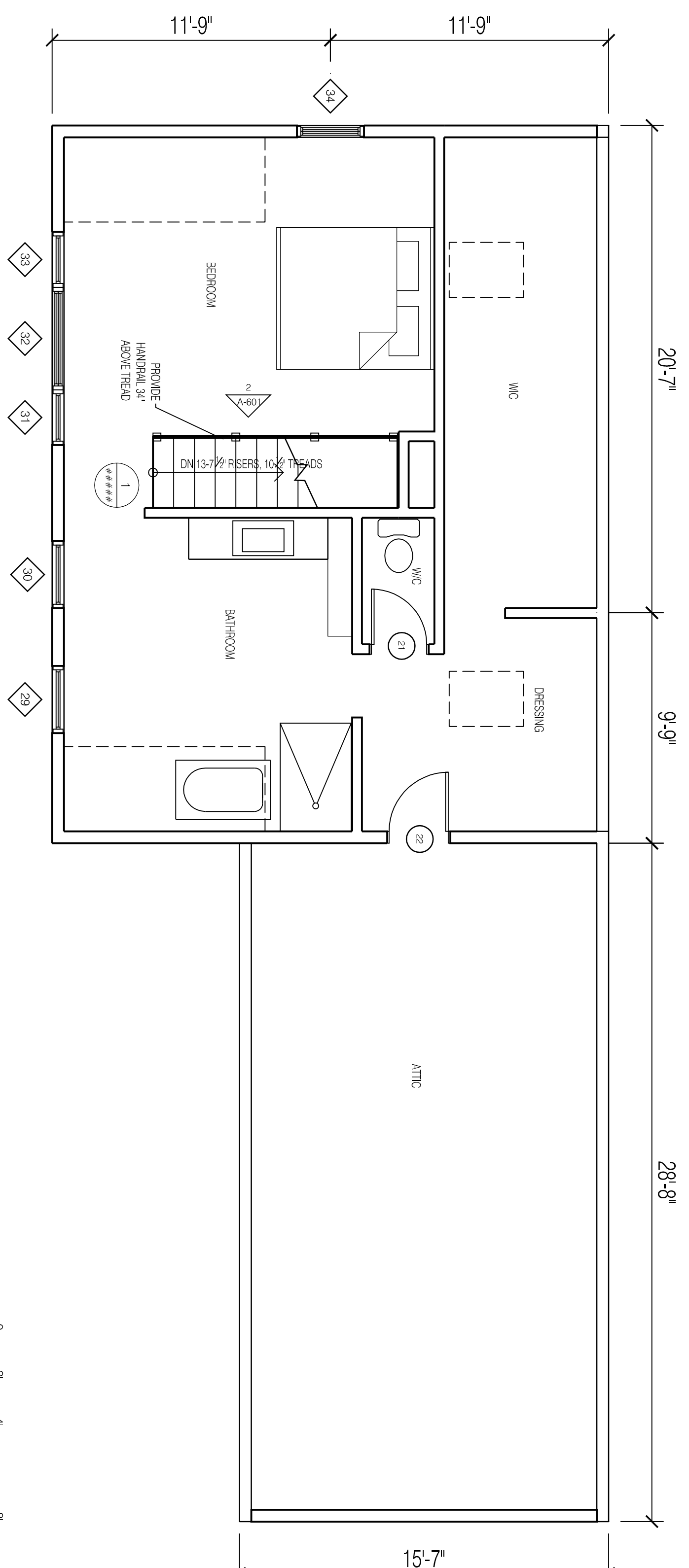
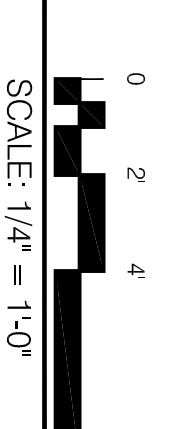


RENOVATION NOTES:  
 ALL CONSTRUCTION TO CONFORM TO IRC 2012, NFPA 101 2012.  
 INSULATE ALL OPEN WALLS TO R-21 MINIMUM.  
 REPLACE ALL OLD WIRING AND LIGHTING FIXTURES.  
 REPLACE ALL PLUMBING.  
 REPLACE BOILER WITH NEW HIGH EFFICIENCY MODULATING GAS FIRED BOILER.  
 INSTALL NEW PANEL RADIATORS.  
 CONSULT WITH OWNER ON SAVING WOOD FLOORS WHERE POSSIBLE.  
 INFORM OWNER AND DESIGNER OF ANY STRUCTURAL DEFICIENCIES DISCOVERED DURING CONSTRUCTION.

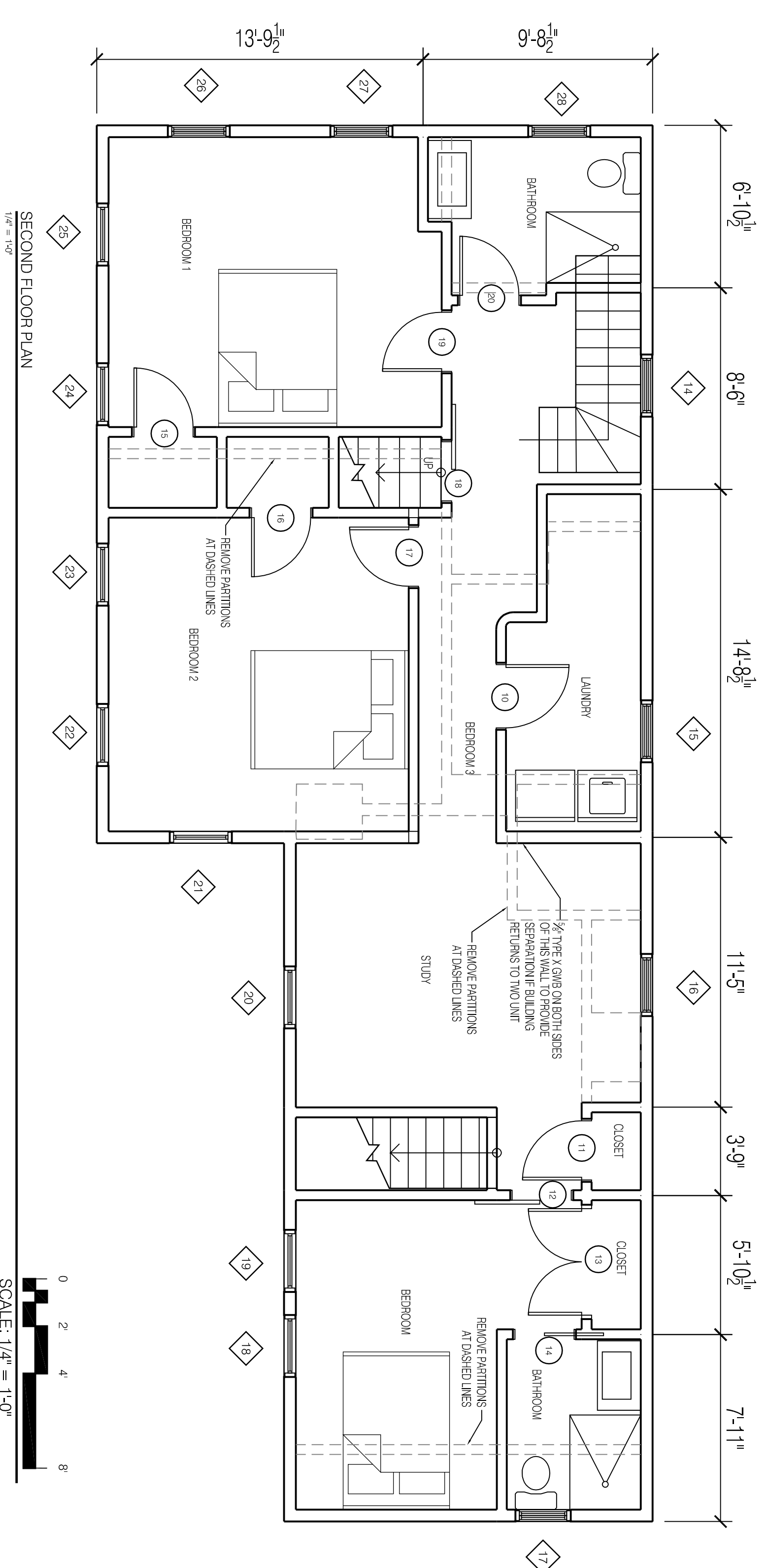


THIRD FLOOR PLAN  
1/8" = 1'-0"

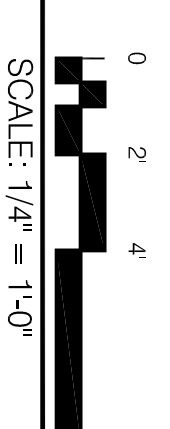


## DOOR AND FRAME SCHEDULE

MARK	SIZE			MATL	GLAZING	FIRE RATING LABEL	NOTES
	WD	HGT	THK				
1	3'-0"	6'-8"	1 3/4"	--	TEMPERED INSULATED	--	--
2	1'-10"	6'-8"	1 3/8"	--	--	--	--
3	2'-6"	6'-8"	1 3/8"	--	--	--	--
4	2'-4"	6'-8"	1 3/8"	--	--	--	--
5	4'-6"	6'-8"	1 3/8"	--	--	--	--
6	3'-0"	6'-8"	NA	--	--	--	Cased opening
7	2'-8"	6'-8"	1 3/4"	--	TEMPERED INSULATED	--	Cased opening
8	2'-8"	6'-8"	NA	--	--	--	Cased opening
9	8'-0"	7'-0"	NA	--	--	--	Cased opening
10	2'-8"	6'-8"	1 3/8"	--	--	--	--
11	2'-6"	6'-8"	1 3/8"	--	--	--	--
12	2'-6"	6'-8"	1 3/8"	--	--	--	--
13	4'-6"	6'-8"	1 3/8"	--	--	--	--
14	2'-6"	6'-8"	1 3/8"	--	--	--	--
15	2'-6"	6'-8"	1 3/8"	--	--	--	--
16	2'-6"	6'-8"	1 3/8"	--	--	--	--
17	2'-6"	6'-8"	1 3/8"	--	--	--	--
18	2'-8"	6'-8"	1 3/8"	--	--	--	--
19	2'-6"	6'-8"	1 3/8"	--	--	--	--
20	2'-6"	6'-8"	1 3/8"	--	--	--	--
21	2'-4"	6'-8"	1 3/8"	--	--	--	--
22	2'-6"	6'-8"	1 3/8"	--	--	--	--



SECOND FLOOR PLAN  
1/8" = 1'-0"



SECOND AND THIRD FLOOR PLANS

PERMIT SET

29 ATLANTIC

SUSAN GRISANTI  
 75 Market Street, Suite 203, Portland, ME

PROSPECT  
**PD**  
 DESIGN  
 58 FORE ST. PORTLAND, ME  
 WWW.PROSPECTDESIGN.ME  
 T: 207 - 749 - 7400

A-102

DESIGN: SR-BB  
 DATE: JUN 17 2013