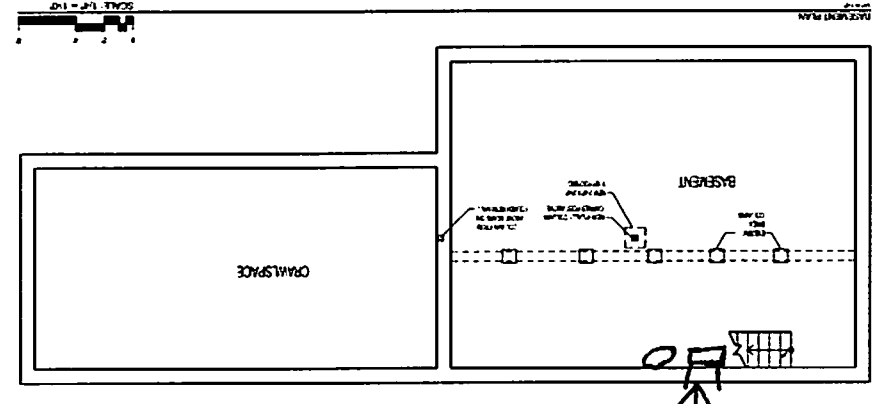
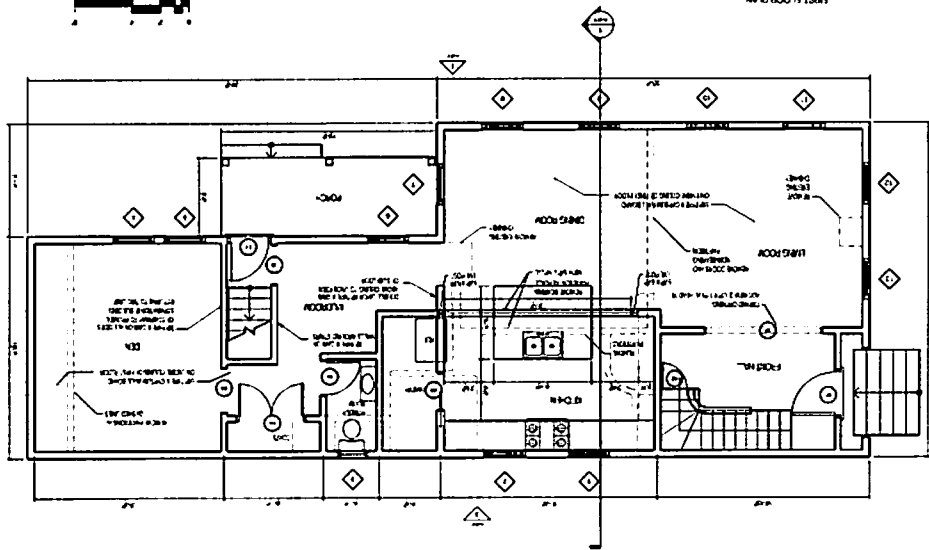


APPROX NOTES:
 ALL WINDOWS TO HAVE A U-FACTOR RATING OF 0.30 OR BETTER.
 ALL WINDOW GRILLS SHALL BE SIMULTANEOUSLY OPERABLE.
 ALL GLAZING SHALL COMPLY TO RC 207.2 RIBS.
 HANGON GLAZING WITH SHL 1-1/2" LESS THAN 10' OR 10' HIGHER IS TO BE TREATED AS HANGON GLAZING AS CLOSE TO DOORS SHALL BE TREATED AS HANGON GLAZING AS CLOSE TO STAIRWAYS AND OR GLASS BRIDGE FLOOR SHALL BE TREATED AS HANGON GLAZING WITH A STAIRWAY AND LESS THAN 8' ABOVE THE FLOOR SHALL BE TREATED.
 ALL WINDOWS SHALL COMPLY TO RC 202 WINDOW FALL PROTECTION TO HAVE OPERATING LIMITS TO RESTRICT OPENING TO 4".
 SLEEPING ROOMS SHALL HAVE AT LEAST ONE EGRESS WINDOW WITH A SHL HI OF NOT MORE THAN 44" A MINIMUM CLEAR OPENING HEIGHT OF 20" AND A MINIMUM CLEAR OPENING WIDTH OF 20".

WINDOW SCHEDULE

MARK	SIZE		TYPE	GLAZING	TEMPERED	Egress	NOTES
	WIDTH	HEIGHT					
1	2'-0"	2'-0"	Double Hung	20 SGL			Window Height of Anderson 400 Series
2	2'-0"	2'-0"	Double Hung	20 SGL			Window Height of Anderson 400 Series
3	1'-0"	1'-0"	Window	20 SGL			Window Height of Anderson 400 Series
4	2'-0"	2'-0"	Double Hung	20 SGL			Window Height of Anderson 400 Series
5	2'-0"	2'-0"	Double Hung	20 SGL			Window Height of Anderson 400 Series
6	2'-0"	2'-0"	Double Hung	20 SGL			Window Height of Anderson 400 Series
7	2'-0"	2'-0"	Double Hung	20 SGL			Window Height of Anderson 400 Series
8	2'-0"	2'-0"	Double Hung	20 SGL			Window Height of Anderson 400 Series
9	2'-0"	2'-0"	Double Hung	20 SGL			Window Height of Anderson 400 Series
10	2'-0"	2'-0"	Double Hung	20 SGL			Window Height of Anderson 400 Series
11	2'-0"	2'-0"	Double Hung	20 SGL			Window Height of Anderson 400 Series
12	2'-0"	2'-0"	Double Hung	20 SGL			Window Height of Anderson 400 Series
13	2'-0"	2'-0"	Double Hung	20 SGL			Window Height of Anderson 400 Series
14	2'-0"	2'-0"	Double Hung	20 SGL			Window Height of Anderson 400 Series
15	2'-0"	2'-0"	Double Hung	20 SGL			Window Height of Anderson 400 Series
16	2'-0"	2'-0"	Double Hung	20 SGL			Window Height of Anderson 400 Series
17	2'-0"	2'-0"	Double Hung	20 SGL			Window Height of Anderson 400 Series
18	2'-0"	2'-0"	Double Hung	20 SGL			Window Height of Anderson 400 Series
19	2'-0"	2'-0"	Double Hung	20 SGL			Window Height of Anderson 400 Series
20	2'-0"	2'-0"	Double Hung	20 SGL			Window Height of Anderson 400 Series
21	2'-0"	2'-0"	Double Hung	20 SGL			Window Height of Anderson 400 Series
22	2'-0"	2'-0"	Double Hung	20 SGL			Window Height of Anderson 400 Series
23	2'-0"	2'-0"	Double Hung	20 SGL			Window Height of Anderson 400 Series
24	2'-0"	2'-0"	Double Hung	20 SGL			Window Height of Anderson 400 Series
25	2'-0"	2'-0"	Double Hung	20 SGL			Window Height of Anderson 400 Series
26	2'-0"	2'-0"	Double Hung	20 SGL			Window Height of Anderson 400 Series
27	2'-0"	2'-0"	Double Hung	20 SGL			Window Height of Anderson 400 Series
28	2'-0"	2'-0"	Double Hung	20 SGL			Window Height of Anderson 400 Series
29	2'-0"	2'-0"	Double Hung	20 SGL			Window Height of Anderson 400 Series
30	2'-0"	2'-0"	Double Hung	20 SGL			Window Height of Anderson 400 Series
31	2'-0"	2'-0"	Double Hung	20 SGL			Window Height of Anderson 400 Series
32	2'-0"	2'-0"	Double Hung	20 SGL			Window Height of Anderson 400 Series
33	2'-0"	2'-0"	Double Hung	20 SGL			Window Height of Anderson 400 Series
34	2'-0"	2'-0"	Double Hung	20 SGL			Window Height of Anderson 400 Series



○ = INDIRECT FLOOR MOUNT
 HOT WATER TANK

□ = BOILER - WALL HUNG
 2 PIPE VENT + COMBUSTION AIR
 w/POLYPROPYLENE

A-101

BASEMENT AND FIRST FLOOR PLANS

PERMIT SET

29 ATLANTIC

S/S ARCHITECT

13 Market Street, Suite 202, Parkland NJ

PROSPECT DESIGN

1301 11th Street, Parkland NJ 07652
 TEL: 201-261-1100