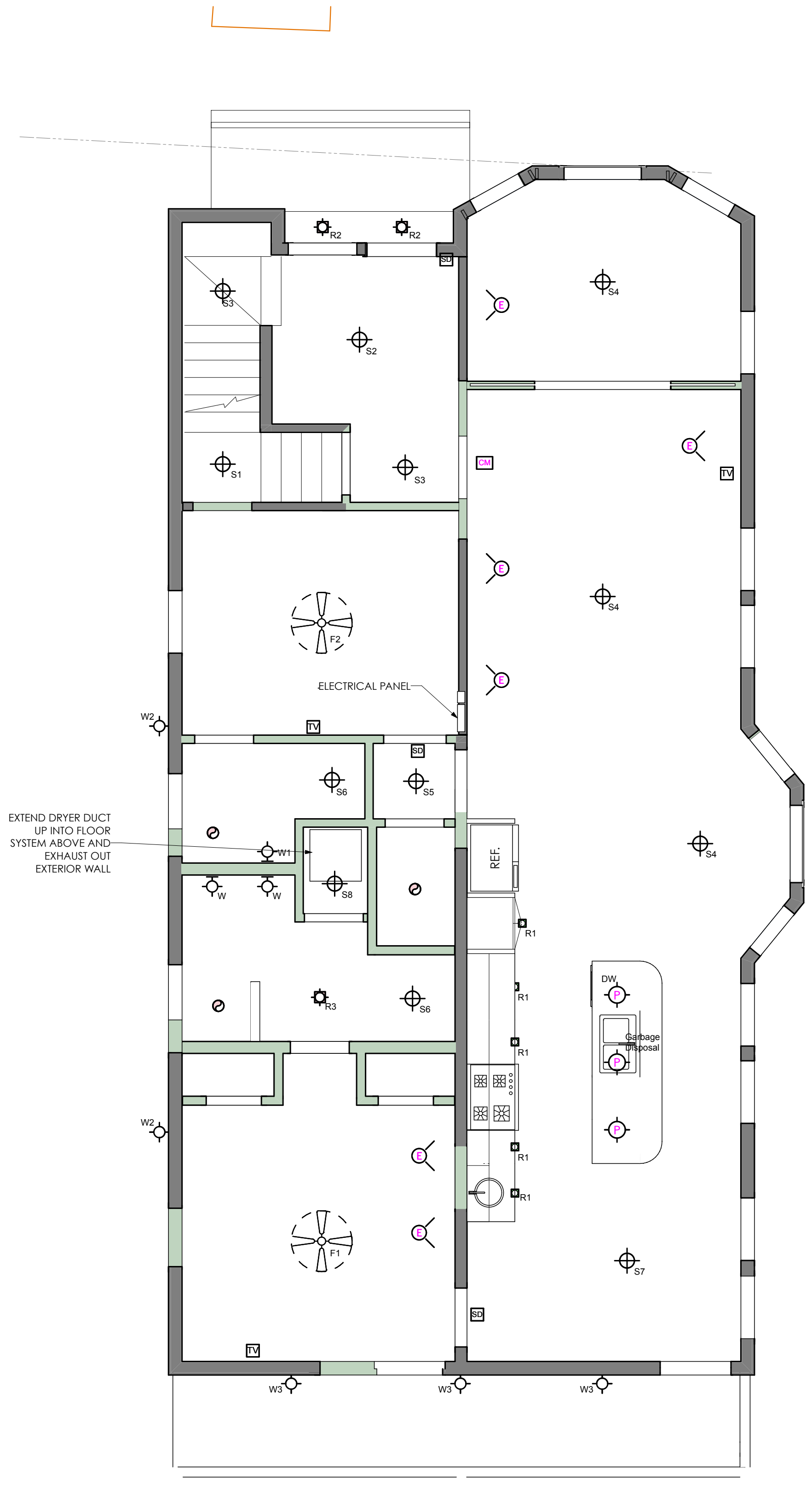


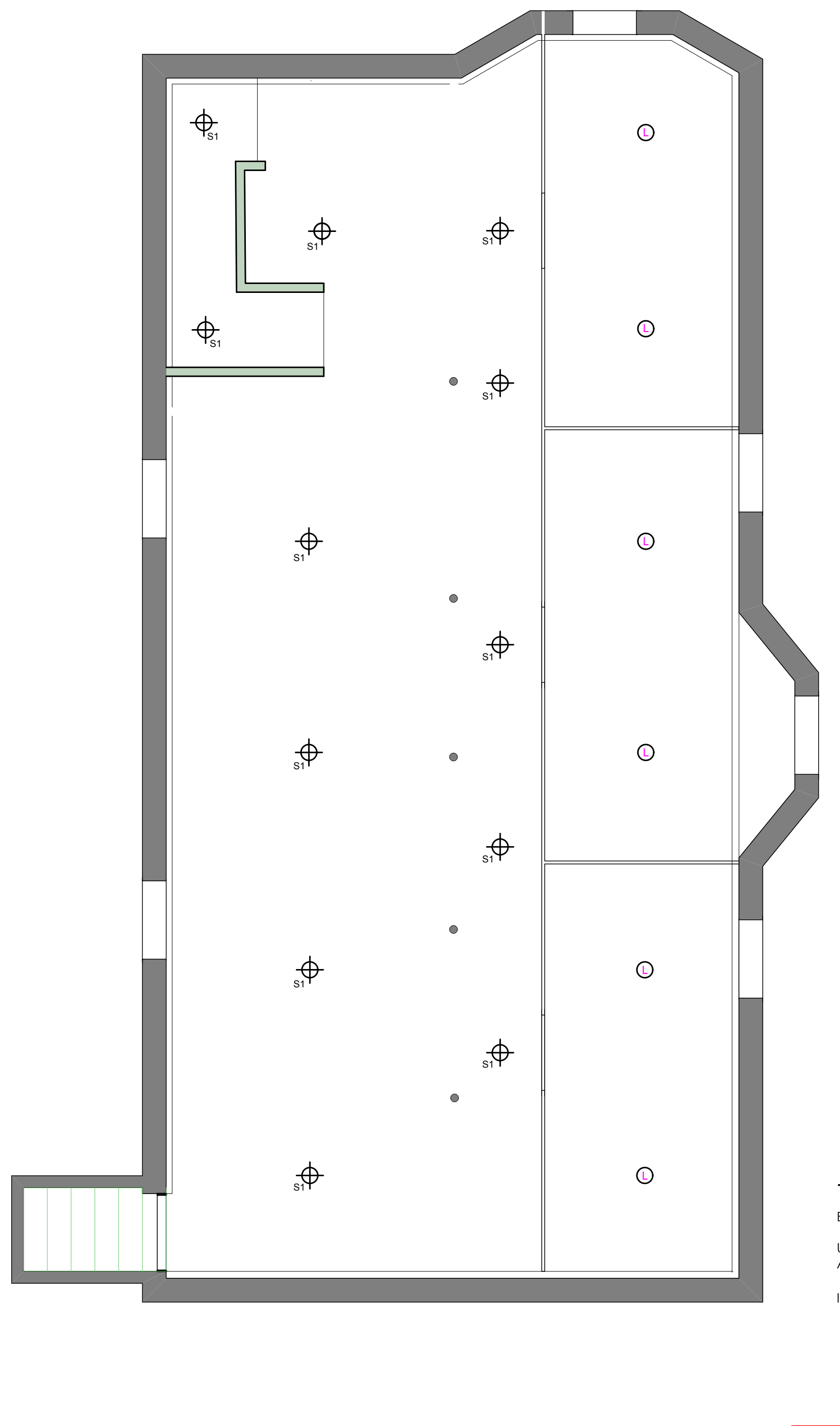
3 ELECTRICAL 2ND FLOOR PLAN
SCALE: 1/4" = 1'-0"

- ### ELECTRICAL LEGEND
- LAMP HOLDER- Porcelain
 - FAN
 - FAN- Exhaust/Light Combo
 - FAN/ LIGHT- Ceiling
 - LIGHT- Recessed Can Light
 - LIGHT- Recessed Can Light Small Aperture
 - Wall Sconce
 - Articulated Arm Wall Light
 - Wall Mounted Uplight
 - LIGHT- Floor, Ceiling
 - LIGHT- Surface Mnt Ceiling
 - LIGHT- Surface Mnt Ceiling Pendant / Chandelier
 - LIGHT- Wall Wash
 - LIGHT- Ceiling Eyeball Small Aperture
 - LIGHT- Under Cabinet LED
 - LIGHT- Overhead Vanity
 - Electric Baseboard Heating
 - Low floor mounted Mini-Splits (Window Sills are 2'-0" off floor)
 - Smoke Detector
 - Carbon Monoxide Detector
 - Lamp Low Volt Wall
 - TV/Cable
 - RECEPTACLE - Appliance
 - Wall Outlet-Double
 - GFI Outlet
 - 240v Outlet
 - Wall Outlet-Quad
 - Flush Floor Outlet-Quad
 - Owner Provided
 - LIGHT- Cove or Track
 - LIGHT- Exterior Flood
 - TV- Wired for Future
 - Recessed LED
 - Chimes
 - SWITCH- 3 Way
 - SWITCH- Dimming
 - OUTLET- Telephone

NOTES:
1. ALL THREE FLOOR HAVE 1.4KVIB FLOOR / CEILING PD



2 ELECTRICAL GROUND FLOOR PLAN
SCALE: 1/4" = 1'-0"



1 ELECTRICAL BASEMENT
SCALE: 1/4" = 1'-0"

REVISED PERMIT SET 9/8/17

GRISANTI - MUNJOY ST
SUSAN GRISANTI
60 MUNJOY ST PORTLAND, ME 04101

KEY:

EXTERIC
UNIT O
AREA L
INTERIC

ELECTRICAL REFLECTED CEILING PLANS
A-1.7



CONSULTANTS:
#Structural Engineering
#Mechanical Engineering
#Portland, Maine
#Accion, Jones

DRAFTER/PERSON OF ISSUE:
Michael Chestnut
9/8/17
PROJECT STATUS:
PRELIMINARY DESIGN

SUBMISSIONS:
ISSUE ID: 1
DATE: 7/20/17

CHANGES THIS ISSUE:
ID: 1
DESCRIPTION: Revised Permit Set

STUDIO MANAGER:
PROJECT ARCHITECT: