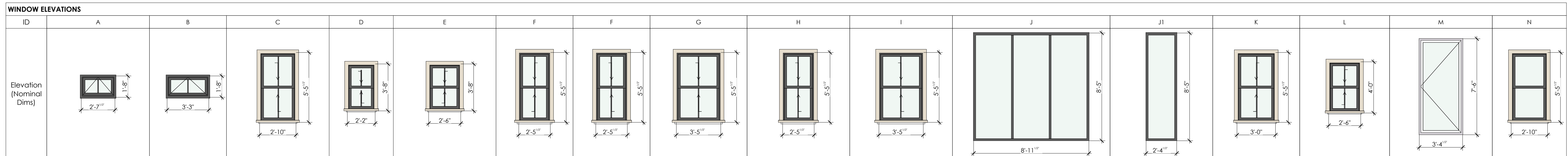


WINDOW SCHEDULE												
ID	Story	# Of	Type	Size		Rough Opening Height	Sill	Manufacturer	Frame Material	Interior Finish Material/Color	Exterior Finish Material/Color	Notes
				Width	Height							
A	BASEMENT	1	Awning	2'-7 1/2"	1'-8"	6'-8"	5'-0"	MARVIN: WOOD-ULIREX	ULIREX EXTERIOR/ WOOD INTERIOR	PREPRIMED WHITE W/ 1-FINISH COAT, SECOND APPLIED IN FIELD	EBONY	SCREENS FOR OPER. UNITS/ 1/2 HT. SCREENS AT DBL. HUNGS, SIM. DIVIDED LIGHTS AS PER ELEV.S. GLASS SHALL BE L2 INSUL. LOW-E ARGON FILLED. HRDWRE SHALL BE SATIN NICKEL FINISH. PROVIDE PULLS FOR DBL. HUNGS
B	BASEMENT	5	Awning	3'-3"	1'-8"	6'-8"	5'-0"	B-O TO MATCH A.	B-O TO MATCH A.	B-O TO MATCH A.	B-I AND K-M TO MATCH A.	B-I AND K-M TO MATCH A.
C	GROUND FLOOR	4	Double Hung	2'-10"	5'-5 1/2"	7'-5 1/2"	2'-0"					
C	SECOND FLOOR	4	Double Hung	2'-10"	5'-5 1/2"	7'-5 1/2"	2'-0"					
C	THIRD FLOOR	4	Double Hung	2'-10"	5'-5 1/2"	7'-5 1/2"	2'-0"					
D	GROUND FLOOR	1	Double Hung	2'-2"	3'-8"	7'-5 1/2"	3'-9 1/2"					
D	SECOND FLOOR	1	Double Hung	2'-2"	3'-8"	7'-5 1/2"	3'-9 1/2"					
D	THIRD FLOOR	1	Double Hung	2'-2"	3'-8"	7'-5 1/2"	3'-9 1/2"					
E	GROUND FLOOR	3	Double Hung	2'-6"	3'-8"	7'-5 1/2"	3'-9 1/2"					
E	SECOND FLOOR	3	Double Hung	2'-6"	3'-8"	7'-5 1/2"	3'-9 1/2"					
E	THIRD FLOOR	3	Double Hung	2'-6"	3'-8"	7'-5 1/2"	3'-9 1/2"					
F	GROUND FLOOR	2	Double Hung	2'-5 1/2"	5'-5 1/2"	7'-5 1/2"	2'-0"					
F	SECOND FLOOR	2	Double Hung	2'-5 1/2"	5'-5 1/2"	7'-5 1/2"	2'-0"					
F	THIRD FLOOR	1	Double Hung	2'-5 1/2"	5'-5 1/2"	7'-5 1/2"	2'-0"					
F	THIRD FLOOR	1	Double Hung	2'-5 1/2"	5'-5 1/2"	7'-5 1/2"	2'-0"					
G	GROUND FLOOR	1	Double Hung	3'-5 1/2"	5'-5 1/2"	7'-5 1/2"	2'-0"					
G	SECOND FLOOR	1	Double Hung	3'-5 1/2"	5'-5 1/2"	7'-5 1/2"	2'-0"					
G	THIRD FLOOR	1	Double Hung	3'-5 1/2"	5'-5 1/2"	7'-5 1/2"	2'-0"					
H	GROUND FLOOR	2	Double Hung	2'-5 1/2"	5'-5 1/2"	7'-5 1/2"	2'-0"					
H	SECOND FLOOR	2	Double Hung	2'-5 1/2"	5'-5 1/2"	7'-5 1/2"	2'-0"					
H	THIRD FLOOR	2	Double Hung	2'-5 1/2"	5'-5 1/2"	7'-5 1/2"	2'-0"					
I	GROUND FLOOR	1	Double Hung	3'-5 1/2"	5'-5 1/2"	7'-5 1/2"	2'-0"					
I	SECOND FLOOR	1	Double Hung	3'-5 1/2"	5'-5 1/2"	7'-5 1/2"	2'-0"					
I	THIRD FLOOR	1	Double Hung	3'-5 1/2"	5'-5 1/2"	7'-5 1/2"	2'-0"					
J	GROUND FLOOR	1	Fixed Rated Storefront	8'-11 1/2"	8'-5"	8'-5 1/2"	0'-0 1/2"	TGP- Fire Rated Storefront System	1-Hour Rated Alum. Frame and Mullions w/ rated fire sealant at perimeter	Alum./ Black	Alum./ Black	Provide 3- Equal Width Units w/ 1-hour frame and Glass (Pilkington Pyrostop 7/8" th. 60 Min. Glass. Provide additional 1/8" break-metal material to match frames for use at corners and at Lower Horiz. Band to cover new cant. Fr. System (HT= 1'-0"+/-)
J1	GROUND FLOOR	1	Fixed Rated Storefront	2'-4 1/2"	8'-5"	8'-5 1/2"	0'-0 1/2"	TGP- Fire Rated Storefront System	1-Hour Rated Alum. Frame and Mullions w/ rated fire sealant at perimeter	Alum./ Black	Alum./ Black	Provide 1-hour frame and Non Rated Glass by others. Provide additional 1/8" break-metal material to match frames for use at corners and at Lower Horiz. Band to cover new cant. Fr. System (HT= 1'-0"+/-)
K	GROUND FLOOR	1	Double Hung	3'-0"	5'-5 1/2"	7'-5 1/2"	2'-0"					Must Meet Egress at Guest Bedroom
K	SECOND FLOOR	1	Double Hung	3'-0"	5'-5 1/2"	7'-5 1/2"	2'-0"					Must Meet Egress at Guest Bedroom
K	THIRD FLOOR	1	Double Hung	3'-0"	5'-5 1/2"	7'-5 1/2"	2'-0"					Must Meet Egress at Guest Bedroom
L	GROUND FLOOR	1	Double Hung	2'-6"	4'-0"	7'-5 1/2"	3'-5 1/2"					
L	SECOND FLOOR	1	Double Hung	2'-6"	4'-0"	7'-5 1/2"	3'-5 1/2"					
L	THIRD FLOOR	1	Double Hung	2'-6"	4'-0"	7'-5 1/2"	3'-5 1/2"					
M	ROOF	2	Casement	3'-4 1/2"	7'-6"	10'-5"	0"					
N	SECOND FLOOR	2	FIXED RATED STOREFRONT	2'-10"	5'-5 1/2"	7'-5 1/2"	2'-0"	TGP- Fire Rated Storefront System	3/4-Hour Rated Alum. Frame and Mullions w/ rated fire sealant at perimeter	Alum./ Black	Alum./ Black	Provide Unit w/ 2' Horiz. Mullion, 3/4-hour frame and Glass (Pilkington Pyrostop ___" th. 45 Min. Glass.
N	THIRD FLOOR	2	FIXED RATED STOREFRONT	2'-10"	5'-5 1/2"	7'-5 1/2"	2'-0"	TGP- Fire Rated Storefront System	3/4-Hour Rated Alum. Frame and Mullions w/ rated fire sealant at perimeter	Alum./ Black	Alum./ Black	Provide Unit w/ 2' Horiz. Mullion, 3/4-hour frame and Glass (Pilkington Pyrostop ___" th. 45 Min. Glass.
				62								



PERMIT SET