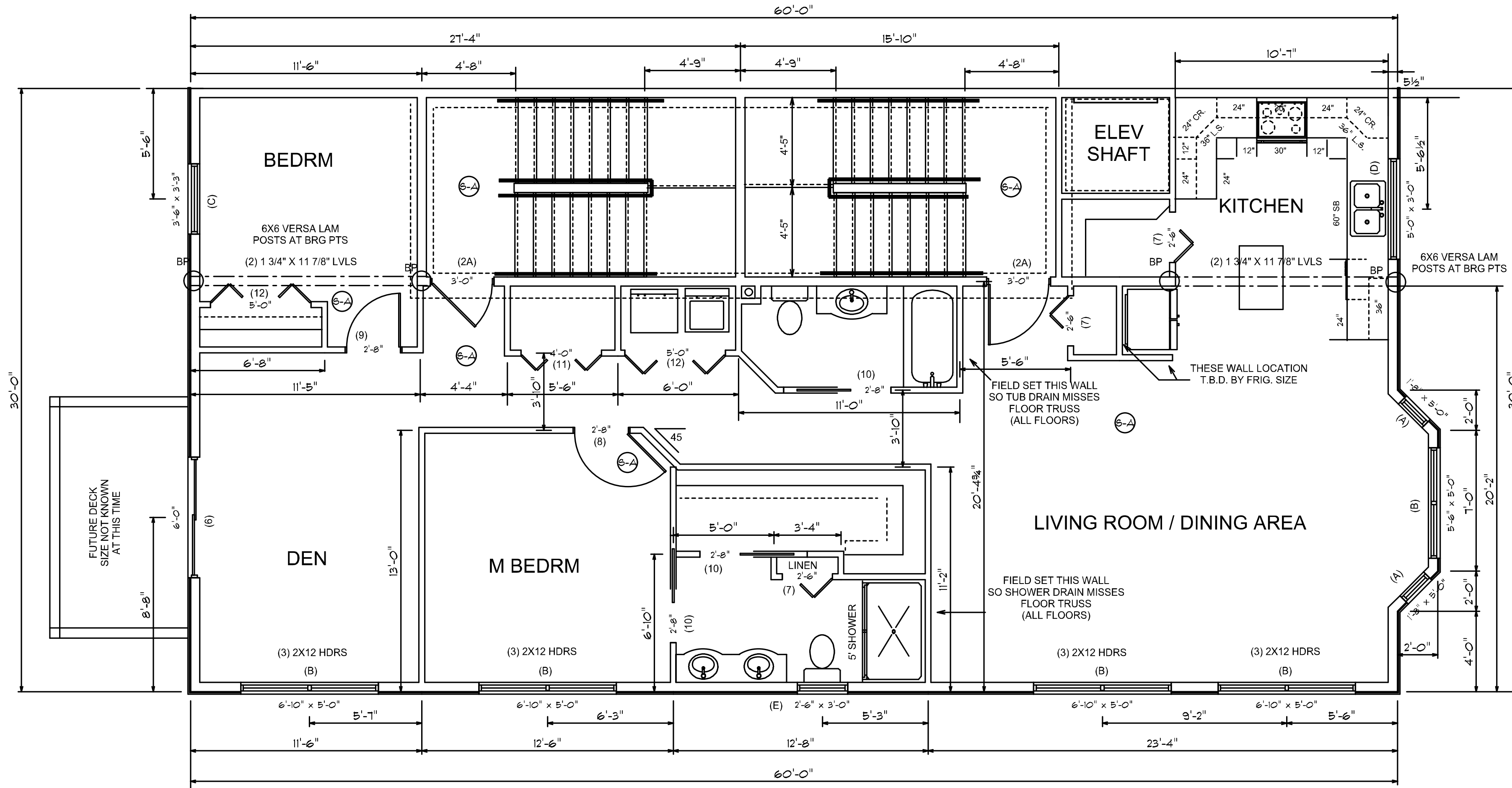


2ND FLOOR APARTMENT # 1



PLAN NOTES:
IT IS THE RESPONSIBILITY OF THE BUILDER OF THIS PROJECT TO SEE THAT IT IS BUILT IN COMPLIANCE WITH ALL STATE AND LOCAL CODES THAT ARE IN EFFECT AT THE TIME OF CONSTRUCTION.

THE BUILDER AND/OR THE OWNER WILL MAKE THE DECISIONS ON ALL OPTIONS ON THE HOME SUCH AS SIDING, ROOFING, WINDOW AND DOOR STYLES AND SIZES, TRIM DETAILS, FLOOR COVERINGS, CABINETS, APPLIANCES, DECK AND PORCH STYLES AND MATERIALS, LANDSCAPING DETAILS AND/OR ANY OTHER ITEMS NOT SPECIFIED ON THESE DRAWINGS.

THE WINDOW AND DOOR LOCATIONS AND SIZES SHOWN ARE RECOMMENDATIONS ONLY AND MAY BE CHANGED AT THE DIRECTION OF THE BUILDER OR THE OWNER (AS APPROVED BY THE C.E.O.)

THE KITCHEN WINDOW IS MEASURED FROM THE INSIDE OF THE KITCHEN WALL WITH ALLOWANCE FOR DRYWALL. IF THE CABINET SIZES ARE CHANGED, THE KITCHEN WINDOW MAY HAVE TO BE RELOCATED. BATHROOM WINDOWS MUST BE SAFETY GLASS. BEDROOMS ARE TO HAVE AT LEAST ONE EGRESS WINDOW. WINDOWS IN STAIRWAYS THEY MUST BE SAFETY GLASS.

INSULATION MUST MEET THE MINIMUM OF THE STATE AND/OR LOCAL CODES AT THE TIME OF CONSTRUCTION.

ALL BEARING POINTS (CIRCLES MARKED BP) ARE TO BE SOLIDLY BLOCKED TO THE FOUNDATION. ALL OPENINGS OVER 6' ARE TO HAVE DOUBLE JACKS SUPPORTING THE HEADERS. THE WINDOW AND DOOR HEADERS IN BRG WALLS ARE TO BE (3) 2X10 UNLESS SPECIFIED DIFFERENTLY ON THE FLOOR PLAN OR CROSS SECTIONS. ANY LAMINATED BEAMS WILL BE AS SPECIFIED ON THE PLANS. FLOOR AND ROOF TRUSSES ARE TO BE ENGINEERED BY THE MANUFACTURER AND ARE TO BE INSTALLED AND BRACED ACCORDING TO THE MANUFACTURERS DIRECTIONS.

STAIRS ARE TO BE MAX 7" RISE AND MIN 11" TREAD N.T.N. WITH RAILINGS AT 36"

THE BUILDER WILL GO OVER THESE DRAWINGS AND VERIFY THAT THEY ARE SUITABLE FOR THEIR NEEDS, AND THAT THE MEASUREMENTS ARE WHAT THEY WANT. SHOULD ANY CHANGES BE NEEDED WE WILL BE GLAD TO DO THEM BEFORE ANY CONSTRUCTION STARTS.

WE DO OUR BEST TO SEE THAT ALL DRAWINGS ARE ERROR FREE, HOWEVER, IF ANY ERRORS ARE FOUND WE WILL BE HAPPY TO CORRECT THEM BEFORE ANY CONSTRUCTION STARTS.

SINCE ALL DOOR COMPANIES MAKE THE SAME SIZE DOORS, WE SHOW THE DOOR SIZES IN THE DOOR SCHEDULES BELOW BUT SINCE WINDOW SIZES DIFFER DEPENDING ON BRAND BY ONE OR TWO INCHES, THE WINDOWS SHOWN AND SIZED ON THESE DRAWINGS ARE CLOSE BUT ONLY APPROXIMATE. WE THEREFORE LEAVE THE WINDOW SCHEDULE BELOW BLANK SO THAT THE BUILDER OR THE OWNER CAN FILL IT IN BEFORE CONSTRUCTION (OR PERMITS IF THE C.E.O. NEEDS IT).

WINDOW SCHEDULE 2ND FLOOR : A) DH, B) D/DH, C) DH/EGRESS, D) DH/TEMPERED, E) D/DH

SIZE AND STYLE	ROUGH OPENING	QUANTITY
(A) 1'-8" X 5' DH		2
(B) 6'-8" X 5' DH/EGRESS		5
(C) 3'-6" X 5'-0" EGRESS		1
(D) 2'-0" X 3'-0" DH/TEMPERED		1
(E) 5'-0" X 3'-3" D/DH		1

2ND FLOOR DOOR SCHEDULE : ALL SWING DOORS TO HAVE LEVER HARDWARE

SIZE AND STYLE	ROUGH OPENING	QUANTITY
(2A) 3' 1 HR FIRE DOOR W/ CLOSER		2
(6) 6' SLIDING DOOR		1
(7) 2'-6" BF		3
(8) 2'-8" L		1
(9) 2'-8" R		1
(10) 2'-8" PKT		3
(11) 4'-0" BF		1
(12) 5'-0" BF		2

VERIFY ALL WINDOW AND DOOR STYLES, SIZES, SWINGS, AND QUANTITIES BEFORE ORDERING SOME DOORS ARE IN 3 1/2" WALLS AND SOME ARE IN 5 1/2" WALLS - BUILDER TO VERIFY

WINDOW SCHEDULE 1ST FLOOR (GARAGE) : A) DH, B) D/DH

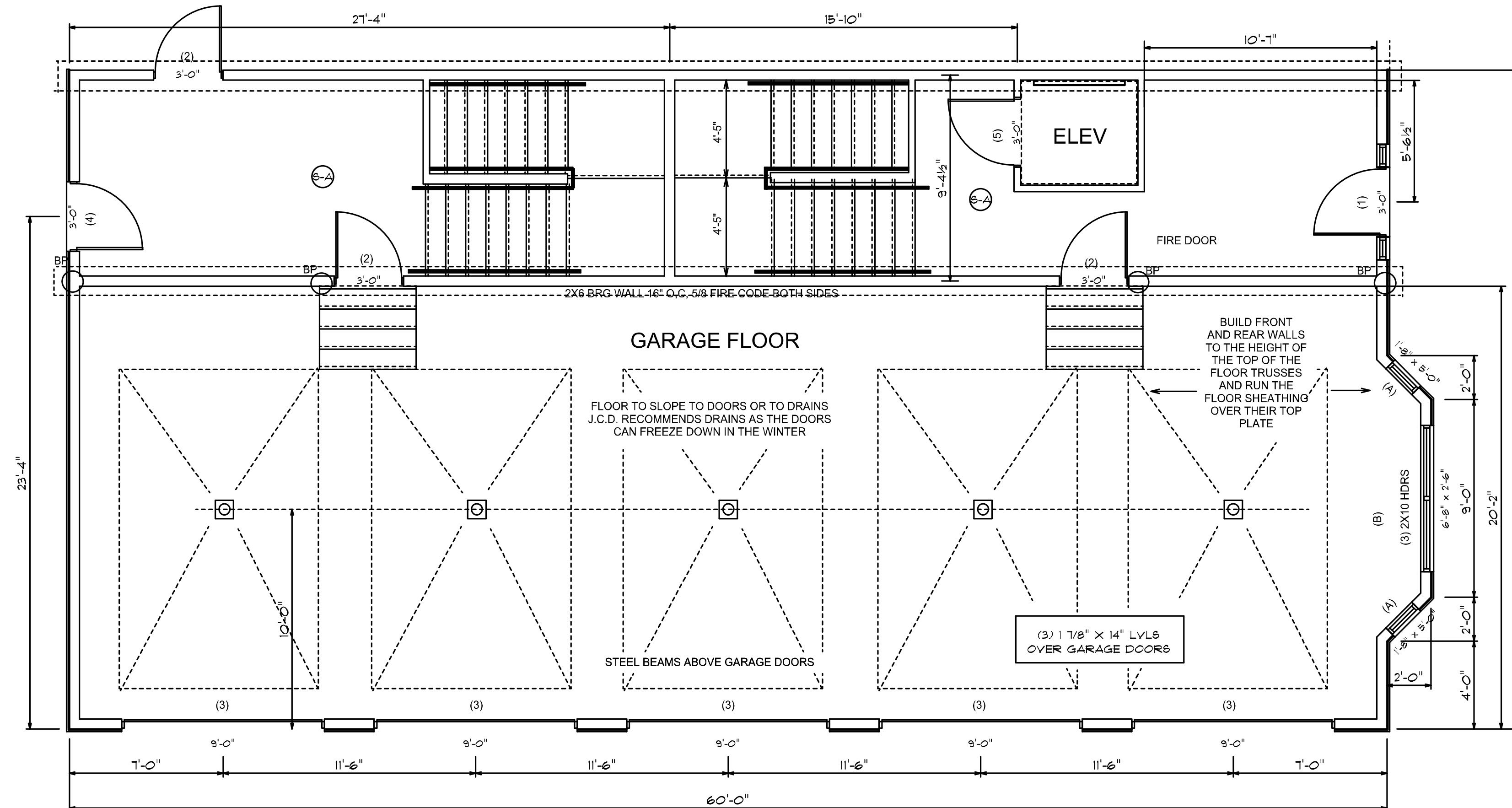
SIZE AND STYLE	ROUGH OPENING	QUANTITY
(A) 1'-8" X 5' DH		2
(B) 6'-8" X 5' DH/EGRESS		1

1ST FLOOR DOOR SCHEDULE : ALL SWING DOORS TO HAVE LEVER HARDWARE

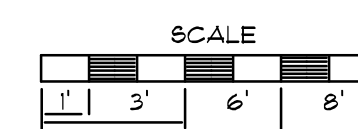
SIZE AND STYLE	ROUGH OPENING	QUANTITY
(1) 3' FRONT 9 LITE ENTRY W/SIDELITES		1
(2) 3' 2 HR FIRE DOOR W/ CLOSER		3
(3) 9X7 INSUL. METAL GARAGE O.H.		5
(4) 3' 9 LITE REAR HALL ENTRY		1
(5) 3' ELEVATOR FIRE DOOR		1

VERIFY ALL WINDOW AND DOOR STYLES, SIZES, SWINGS, AND QUANTITIES BEFORE ORDERING SOME DOORS ARE IN 3 1/2" WALLS AND SOME ARE IN 5 1/2" WALLS - BUILDER TO VERIFY

FIRST FLOOR - GARAGES



1265.5 SQ. FT. GARAGE
556.5 SQ. FT. HALLS AND STAIRS
1822 SQ. FT. 2ND FLOOR
1822 SQ. FT. 3D FLOOR
1822 SQ. FT. 4TH FLOOR



72 MUNJOY STREET CONDOS
016 B008 - 016 B009

J. CALL DESIGN
PLANNING AND DESIGN SERVICES FOR
RESIDENTIAL AND COMMERCIAL
151 ROOSEVELT TRAIL, WINDHAM, ME. 207-892-2810

SCALE
1/4" = 1'
DATE
5/2015

DRAWN BY
J. CALL
A-4
PAGE

THESE DRAWINGS ARE DONE UNDER THE DIRECTION OF AN ENGINEER. IT IS THE BUILDER OR GENERAL CONTRACTOR'S RESPONSIBILITY TO SEE THAT THIS PROJECT IS BUILT ACCORDING TO ALL STATE AND LOCAL BUILDING CODES THAT ARE IN EFFECT AT THE TIME OF CONSTRUCTION. THE OWNERS AND THE BUILDER, WILL GO OVER THESE DRAWINGS BEFORE CONSTRUCTION STARTS TO VERIFY THAT THEY ARE SUITABLE FOR THEIR NEEDS, AND TO VERIFY THAT ALL MEASUREMENTS ARE WHAT THEY WANT. IF ANY QUESTIONS ARRISE PLEASE CONTACT, J CALL DESIGN.

PENINSULA PROPERTY DEV.
robertleblanc1@me.com
DRAWING
1ST AND 2ND FLOOR