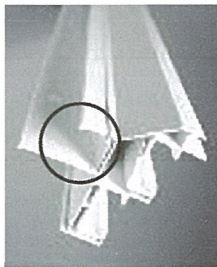
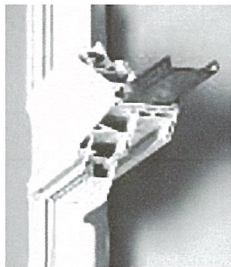


For field installations, this handy 1/2" drywall return channel offers an alternative to wood trim and caulking while providing a clean, professional finish.

Available in white or beige in 21' lengths. Easily trims to any size.



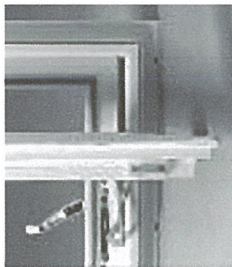
**J-Channel Quick Fix Repair Kit**  
Snap-in J-channel replaces damaged material caused by stray hammer swings. A quick and easy solution when the need arises.  
Available in white or beige in 14' lengths. Trims to any size.



**Superior Metal-Reinforced Mulling System**

For greater structural integrity across mullled window units.  
Metal channel secures one window unit frame to another for added strength to multiple units.  
Metal band provides added rigidity for shipping and additional reinforcement at the mull intersections for installation. Drip Cap at the top provides a system to direct water away from mullion.

This mulling procedure is available for single-hung, double-hung and sliding windows only. Maximum opening size is 96" x 72" for double mullled units and 114" x 50" for triple mullled units.



**Casement Opening System Options**

Standard Opening Design (above left) allows easy cleaning of both sides from inside the home. Egress Hardware Option (above right) allows maximum window opening for compliance with building safety standards.



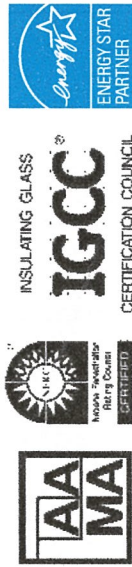
A powerful alliance of beauty and strength, Alside Windows are precision-engineered to provide years of excellent service and energy savings. Our windows are continuously tested in our state-of-the-art laboratories and verified by independent testing and certification agencies to ensure consistent high quality, performance and dependability.

Utilizing performance levels beyond AAMA, ASTM and NFRC standards, Alside Windows are tested for air, water, structural load, thermal performance and forced entry resistance. Our windows are approved under AAMA and NFRC certification programs. Complete testing data and certification documentation are available upon request.

**Technical Support**

Please note that installation drawings included in this brochure should not be construed as set instructions or the only possible way to install our windows. Actual field conditions, construction characteristics and building codes in various geographical areas will dictate variances in installation methods. Alside's engineering and sales departments are readily available to assist you with technical information, installation details and drawings. Alside offers a full range of in-house and field engineering services and support to architects, engineers and building owners across the country.

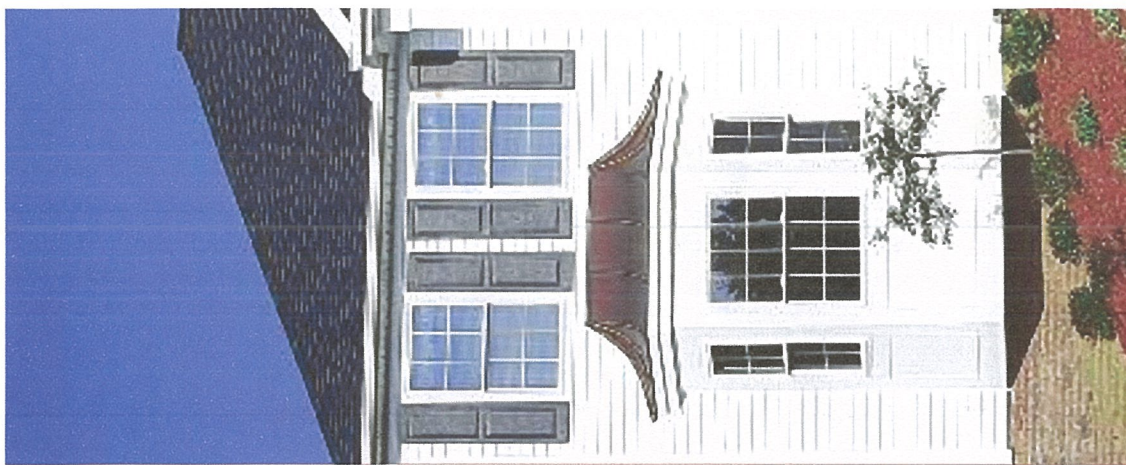
For additional information, contact us at 800.922.6009, or visit our Tech Center at [www.alsidewindows.net](http://www.alsidewindows.net).



©2011 Alside. Alside is a registered trademark of Alside. ENERGY STAR name and logo are registered U.S. marks and are owned by the U.S. government. \*Insulated Glass (IG) units that require capillary tubes may experience some argon gas depletion. Colors are reproduced by lithographic process and may vary slightly from colors of actual product. All specifications and designs subject to change without notice. Printed in USA. Rev. 12-11/10/OP 75-1988-01

**Alside**

Alside PO Box 2010 Akron, Ohio 44309  
1-800-922-6009 [www.alside.com](http://www.alside.com)



Re

Please recycle

**STOCK SIZES REQUIRED TO MEET EGRESS**

Minimum Height	35-1/2" x 59-1/2"
Minimum Width	31-1/2" x 71-1/2"

**STRUCTURAL**

AAAMA 101/1.S.2/A440-08	CLASS LC-PG25
Test Size	44" x 77"
Loads	52.66 psf
Water	3.76 psf
Air @ 25 mph	0.12 cfm/ft <sup>2</sup>

**THERMAL NFRC 100-04**

Clear Glass	U-Value	0.48
ClimaTech		0.30
ClimaTech Elite		0.30

**SOLAR PROPERTIES NFRC 200, 300, 301-04**

	SHGC	VT
Clear Glass	0.63	0.67
ClimaTech	0.32	0.60
ClimaTech Elite	0.23	0.53

Contact us for high-performance options where increased design pressure ratings are required.

Visit our Tech Center at [www.aisidewindows.net](http://www.aisidewindows.net)



1. Integral prepunched nailing fin on all four sides.

2. J-channel receptor on side jambs, sill and header.

3. Beveled exterior mainframe.

4. Exterior drop-in glazing.

5. 3/4" insulated glass unit for thermal efficiency.

6. Interlock at meeting rail for reduced air infiltration and added security.

7. Reinforced lock rail for added strength.

8. Tilt-in sash for ease of cleaning.

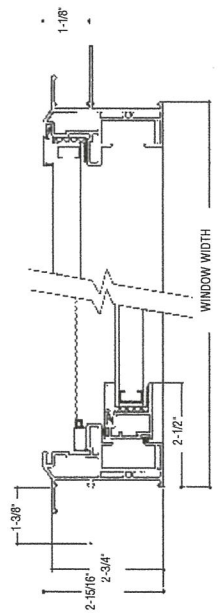
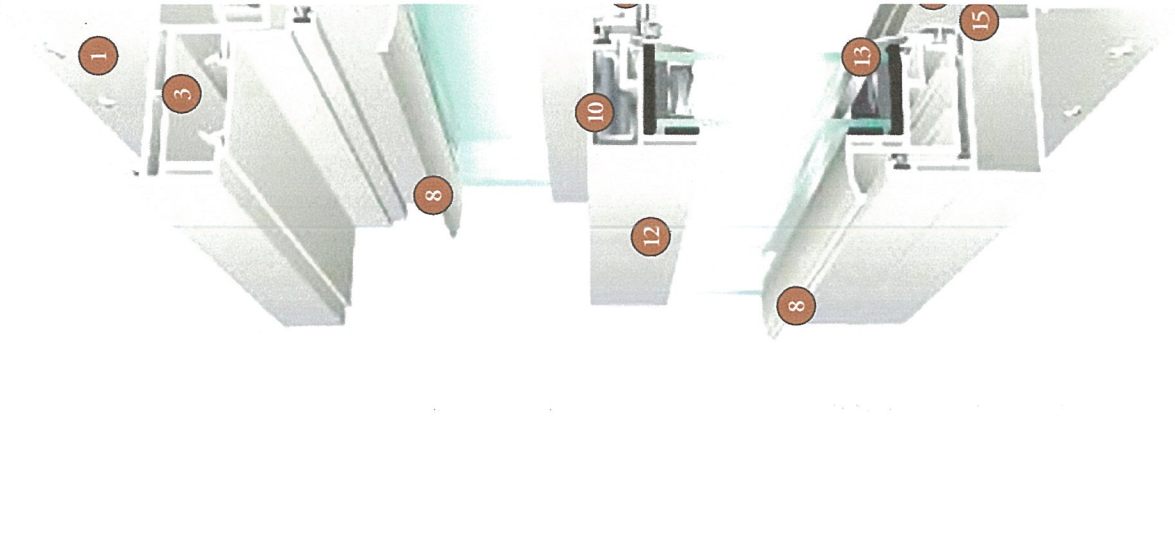
9. Fully extruded lift rail.

10. High-performance PPG Intercept® Warm-Edge Spacer System.

11. Multi-chambered design for energy efficiency and reduced noise.

**Plus these additional features:**

- Solid vinyl frame and sashes for strength, energy efficiency and ease of maintenance.
- Mitered and welded construction for strength and beauty.
- Stainless steel constant force balances.
- Color-coordinated cam lock and keeper.
- Roll-formed aluminum screen frame with fiberglass half screen.



WINDOW WIDTH

**STOCK SIZES REQUIRED TO MEET EGRESS**

Minimum Height 59-1/2" x 35-1/2"  
 Minimum Width 47-1/2" x 47-1/2"

**STRUCTURAL**

AAMA 1071/S.2/A440-08 CLASS R-PG20  
 Test Size 72" x 60"  
 Loads 30.09 psf  
 Water 5.43 psf  
 Air @ 25 mph 0.09 cfm/ft<sup>2</sup>

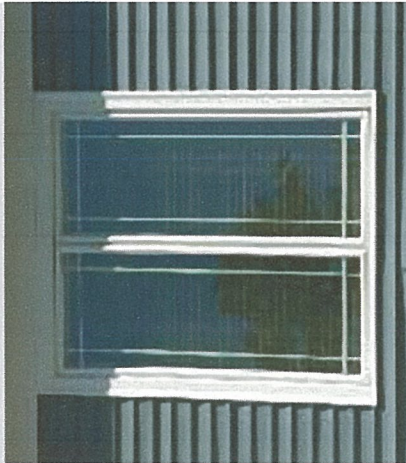
**THERMAL NFRC 100-04**

Clear Glass U-Value 0.48  
 ClimaTech 0.30  
 ClimaTech Elite 0.30

**SOLAR PROPERTIES NFRC 200, 300, 301-04**

SHGC 0.63  
 ClimaTech 0.32  
 ClimaTech Elite 0.23

VT 0.67  
 ClimaTech 0.60  
 ClimaTech Elite 0.53



**STOCK SIZES REQUIRED TO MEET EGRESS**

Requires Egress Hardware  
 Minimum Height 35-1/2" x 35-1/2"  
 Minimum Width 27-1/2" x 47-1/2"

**STRUCTURAL**

AAMA 1071/S.2/A440-05 CLASS C-PG55  
 Test Size 24" x 48"  
 Loads 120.38 psf  
 Water 8.25 psf  
 Air @ 25 mph 0.04 cfm/ft<sup>2</sup>

**THERMAL NFRC 100-04**

Clear Glass U-Value 0.44  
 ClimaTech 0.30  
 ClimaTech Elite 0.29

**SOLAR PROPERTIES NFRC 200, 300, 301-04**

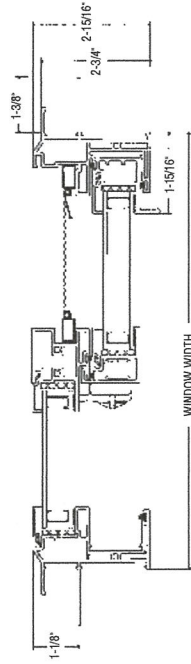
SHGC 0.54  
 ClimaTech 0.27  
 ClimaTech Elite 0.19

VT 0.57  
 ClimaTech 0.50  
 ClimaTech Elite 0.44

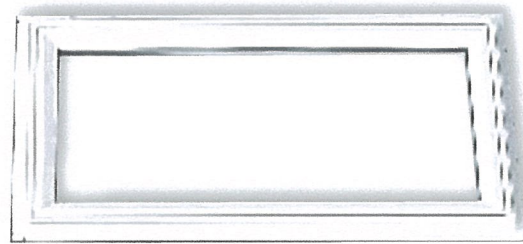
Visit our Tech Center at [www.alsidewindows.net](http://www.alsidewindows.net)



- Integral J-channel.
- Metal-reinforced interlock at sash meeting rails.
- Dual brass tandem rollers.



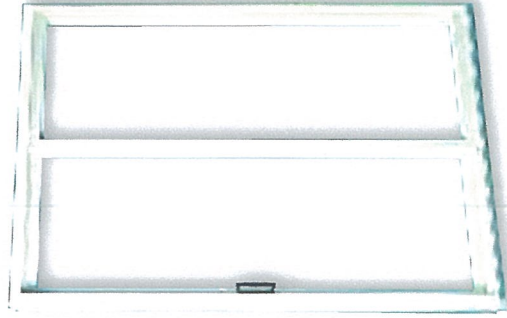
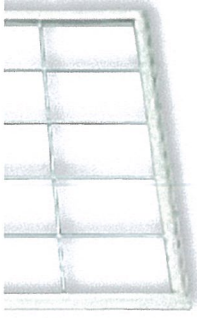
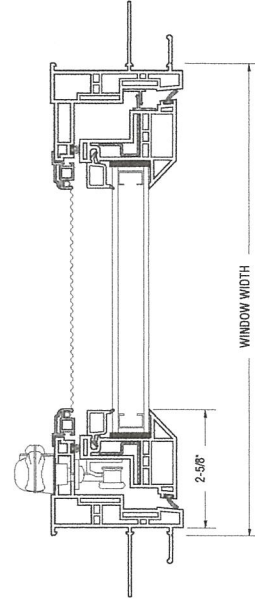
*\*Standard manufacturing procedure will have right side operable sash from interior.*

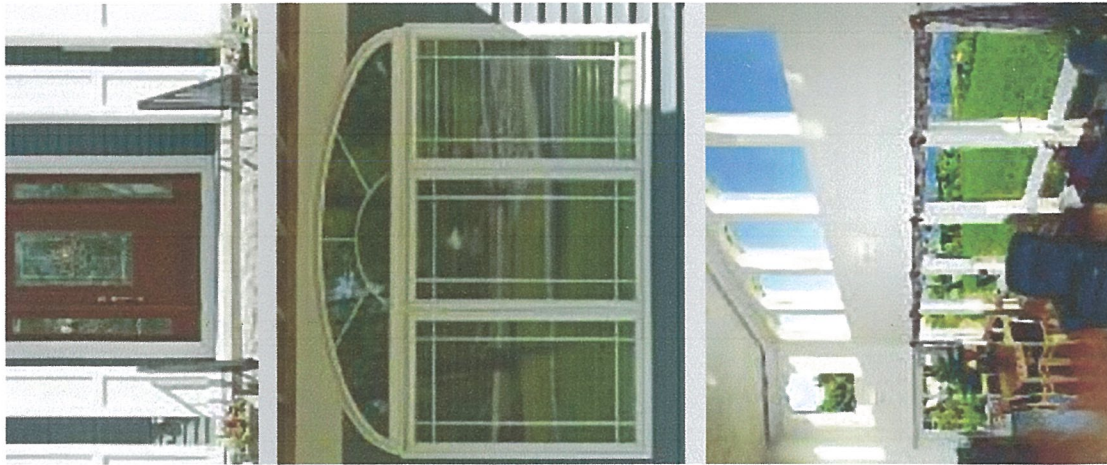


**MODEL 0171  
 Casement Window**

*Contemporary styling with easy operation and cleaning.*

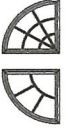
- Beveled exterior sash design.
- Fusion-welded sash and mainframe.
- Low-profile, single-handle, multi-point positive locking system.
- Compression-type inner bulb seal.
- Continuous mainframe construction for multi-lite units.





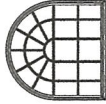
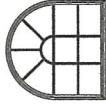
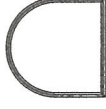
Contact Aside for size availability and limitations.

**ROUND TOP**

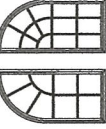
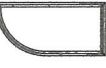


**QUARTER ROUND**

**ROUND TOP with EXTENDED LEG**



**QUARTER ROUND with EXTENDED LEG**



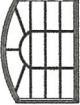
**EYEBROW**



**HALF EYEBROW**



**EYEBROW with EXTENDED LEG**



**HALF EYEBROW with EXTENDED LEG**



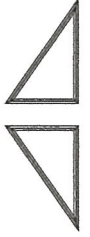
**HALF ELLIPSE**



**FULL ROUND**



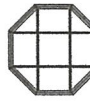
**TRIANGLE**



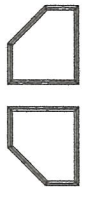
**TRAPEZOID**



**OCTAGON**



**PENTAGON**



of style and dimension to your  
All grids are enclosed within the  
glass unit for easy cleaning.

Choose from our selection of  
grid profiles and patterns to find  
the ideal window for your home:

*Classic Grids* – available in Colonial  
Diamond, Prairie and Double  
Colonial patterns

*Contoured Grids* – available in  
Prairie and Double Prairie patterns

*Gold Tone Brass Grids* – available  
in Prairie and Double Prairie patterns

*Narrow Brass Grids* – available  
in Colonial pattern

**V-Grooved Cut Glass**  
Add a cut or polished V-groove  
glass pattern to your window for  
the perfect touch of elegance.

