

PROJECT INFORMATION:

SCOPE:
The fire protection project consists of installing a wet sprinkler system in this three family home.

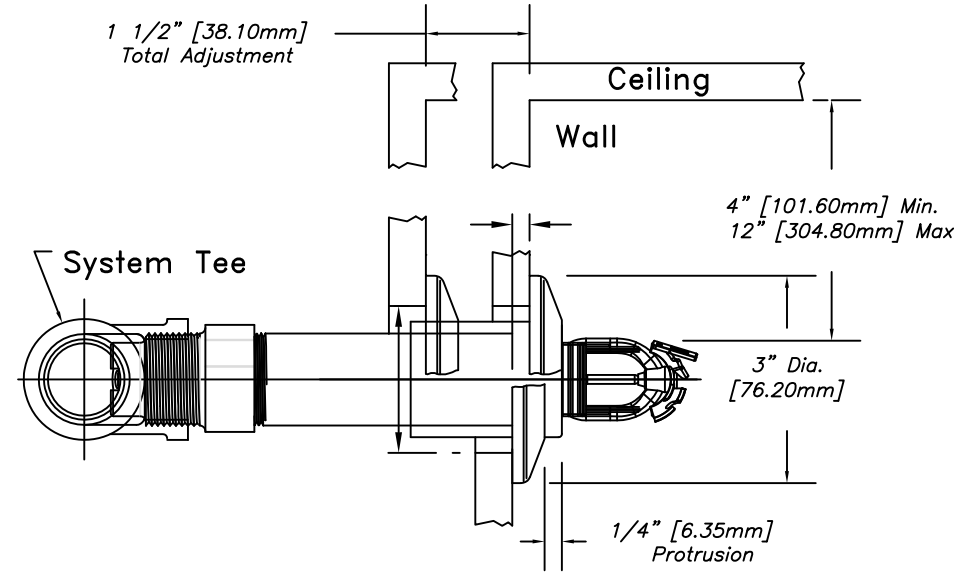
WATER SUPPLY:
This is a wet sprinkler system supplied by a municipal water supply by the P.W.D.

CONSTRUCTION TYPE:
Construction type is "wood construction with gypsum wall board"

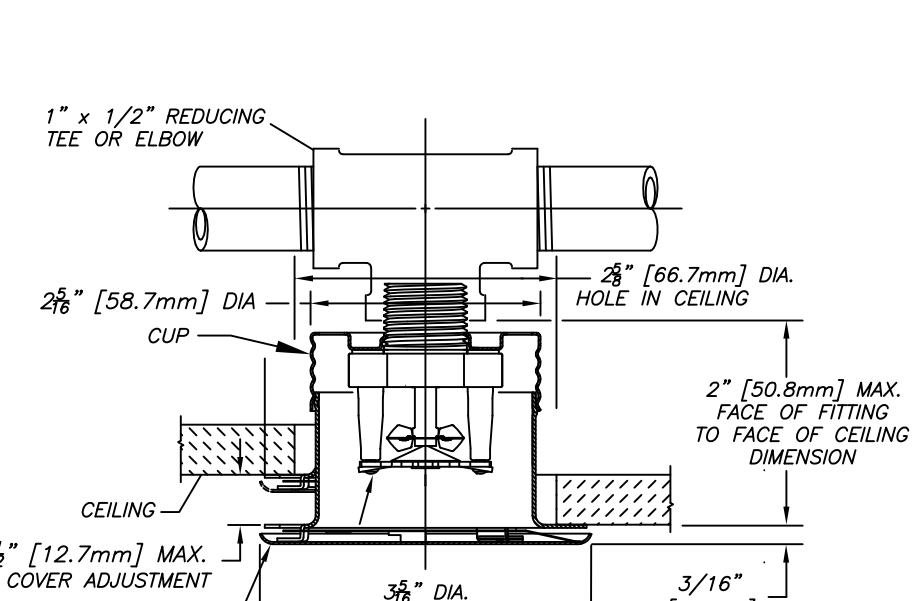
CODE REFERENCES:
*NFPA 13R 2016 ed.

SPRINKLER SYSTEM NOTES

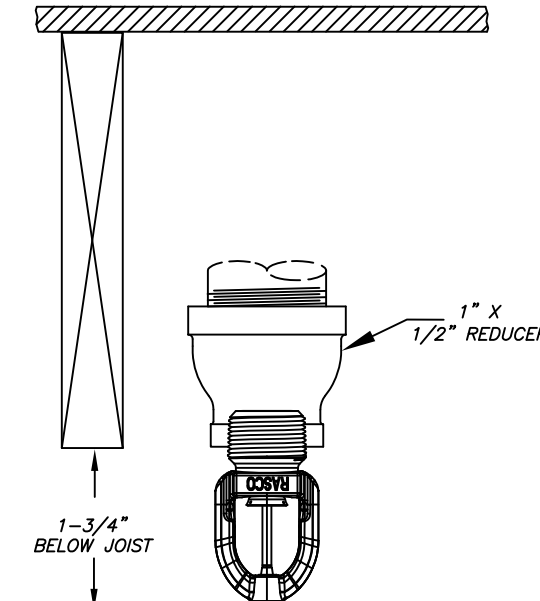
- * DESIGN AND INSTALLATION SHALL CONFORM TO N.F.P.A. # 13R (2016), LOCAL FIRE AND BLDG. DEPTS.
- * HANGER INSTALLATION AND SPACING SHALL BE IN ACCORDANCE WITH N.F.P.A. #13
- * ALL EQUIPMENT TO BE UL LISTED FOR FIRE PROTECTION USE.
- * FIELD FOREMAN TO VERIFY LOCATION OF HIGH TEMPERATURE SPRINKLERS AND INSTALL HIGH TEMPERATURE SPRINKLERS IN ACCORDANCE WITH N.F.P.A. #13
- * OWNER SHALL PROVIDE ADEQUATE HEAT IN ALL AREAS ENCLOSING WET TYPE SPRINKLER PIPING TO PREVENT FREEZING AND FAILURE OF AUTOMATIC SPRINKLER SYSTEM.



DH56 HSW DETAIL
SCALE: N.T.S.



RFC-49 DETAIL
SCALE: N.T.S.



F1-RES-49 DETAIL
SCALE: N.T.S.

NOTES FOR AN NFPA 13R SYSTEM

(13R) 6.4.6.3.3 SHADOW AREAS SHALL BE PERMITTED IN THE PROTECTION AREA OF A SPRINKLER AS LONG AS THE CUMULATIVE DRY AREA DOES NOT EXCEED 15 SQ.FT. PER SPRINKLER.

(13R) 6.6.2 SPRINKLERS SHALL NOT BE REQUIRED IN BATHROOMS IF THE BATHROOM AREA DOES NOT EXCEED 55 FT SQ.

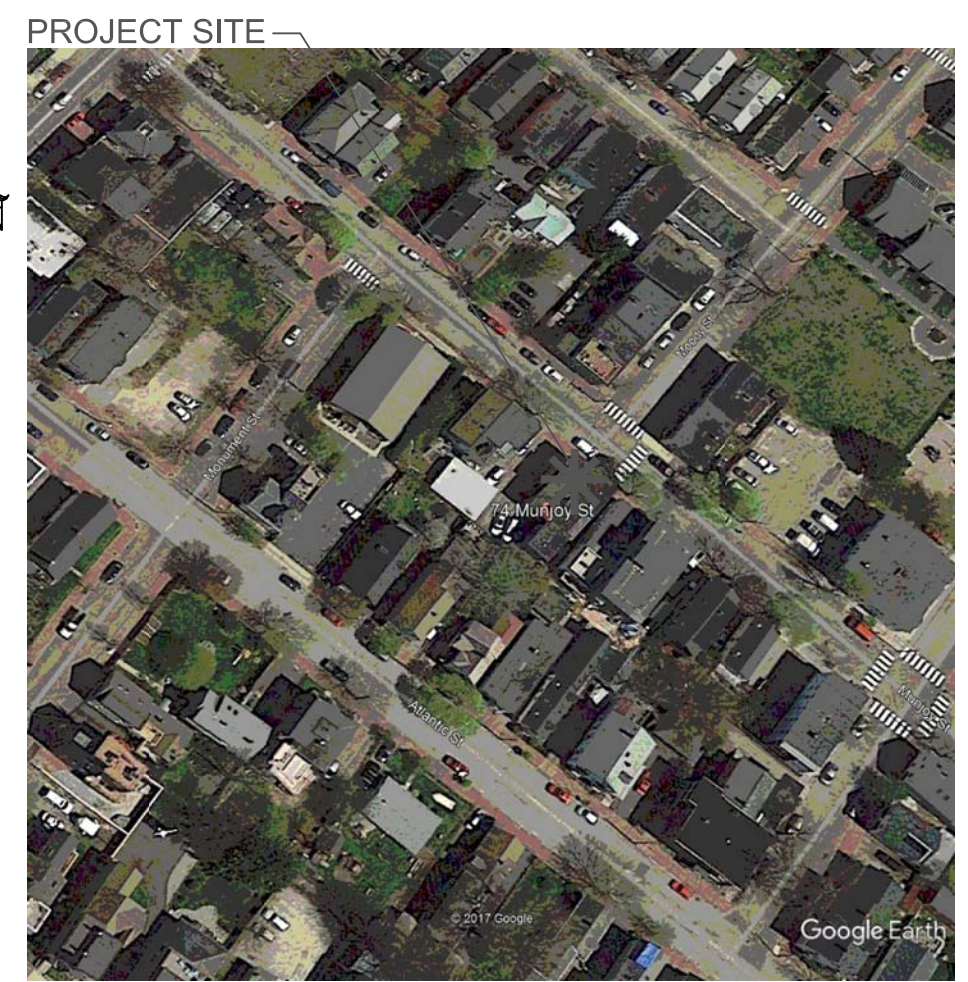
(13R) 6.6.3 SPRINKLERS SHALL NOT BE REQUIRED IN CLOTHES CLOSETS, LINEN CLOSETS, AND PANTRIES WITHIN THE DWELLING UNITS WHEN THE FOLLOWING CONDITIONS ARE MET:
(1) THE AREA OF THE SPACE DOES NOT EXCEED 24 FT SQ.
(2) THE WALLS AND CEILING ARE SURFACED WITH NON-COMBUSTIBLE OR LIMITED-COMBUSTIBLE MATERIAL.

(13R) 6.6.5 SPRINKLERS SHALL NOT BE REQUIRED IN ANY PORCHES, BALCONIES, CORRIDORS, CARPORTS, AND STAIRS THAT ARE OPEN AND ATTACHED.

(13R) 6.6.5.1 WHERE A ROOF OR DECK IS PROVIDED ABOVE, SPRINKLERS SHALL BE INSTALLED TO PROTECT ATTACHED EXTERIOR BALCONIES, DECKS, AND GROUND FLOOR PATIOS SERVING UNITS IN TYPE V CONST.

(13R) 6.6.6 SPRINKLERS SHALL NOT BE REQUIRED IN ATTICS, PENTHOUSE, EQUIPMENT ROOMS, ELEVATORS, AND ELEV. MACHINE ROOMS, AND CRAWL SPACES AND OTHER CONCEALED SPACES NOT CONTAINING FUEL FIRED EQUIPMENT.

(13R) 6.6.7 SPRINKLERS SHALL NOT BE REQUIRED IN CLOSETS ON EXTERIOR BALCONIES OR EXTERIOR BREEZEWAYS/ CORRIDORS REGARDLESS OF SIZE UNLESS THERE IS AN ACCESS DOOR DIRECTLY INTO THE DWELLING UNIT.



SITE PLAN
SCALE: N.T.S.

CONTRACTOR:

FPSS
Fire Protection Sprinkler Services

278 HARRIS RD
MINOT, ME 04258
PHONE: 207-393-7422

CONTRACTOR # 903

GENERAL CONTRACTOR:

JOE KIEVITT
74 MUNJOY ST.
PORTLAND, ME 04101
207-650-1084

- LEGEND:**
- RN PIPE RISER UP
 - DN PIPE RISER DOWN
 - CPVC PIPE (WET)
 - HYDRAULIC CALC. POINT
 - SYSTEM RISER
 - HYDRAULIC DESIGN AREA

DESIGN NOTES:

- * POSITION, LOCATION, SPACING, AND USE OF SPRINKLERS AND HANGERS SHALL BE IN ACCORDANCE WITH NFPA 13R 2016 ed.
- * HYDRAULIC CALCULATION PROCEDURES HAVE BEEN DONE IN ACCORDANCE WITH NFPA 13R 2016 ed. (SEE PLANS FOR LOCATION OF REMOTE AREAS, HYDRAULIC REFERENCE POINTS, AND SYSTEM DEMANDS)
- * ALL ELECTRICAL WORK TO BE DONE BY OTHERS.
- * DIMENSIONS AND LOCATIONS GIVEN FOR SPRINKLER HEADS AND PIPE MAY VARY TO ACCOMMODATE ACTUAL FIELD CONDITIONS.
- * OWNER TO PROVIDE SUFFICIENT HEAT TO PREVENT FREEZING IN WATER FILLED SPRINKLER PIPE AND EQUIPMENT.
- * OTHER TRADES TO COORDINATE THEIR WORK WITH SPRINKLER CONTRACTOR.
- * REFER TO SPEARS CPVC PLASTIC PIPE INSTALLATION MANUAL FOR GLUE CURING TIME AND HANGER SPACING.

SPRINKLER HEAD DESCRIPTION:

RELIABLE RFC-49
BRASS CONCEALED PENDENT

QTY	TEMP	CLASS
31	165°	4.9

16" X 16" SPACING MAX
8" MAX FROM HEAD TO WALL
13 GPM @ 7 PSI

RELIABLE F1-RES-49
WHITE PENDENT

QTY	TEMP	CLASS
19	155°	4.9

12" X 12" SPACING MAX
6" MAX FROM HEAD TO WALL
1 3/4" BELOW JOIST
13 GPM @ 7 PSI

RELIABLE DH56
DRY CHROME HSW

QTY	TEMP	CLASS
4	155°	5.6

8" X 28" SPACING MAX
4" TO 12" BELOW CEILING TO DEFLECTOR

TOTAL HEADS ON SHEET: 54

SCALE:

DATE: SEPT 28, 2017

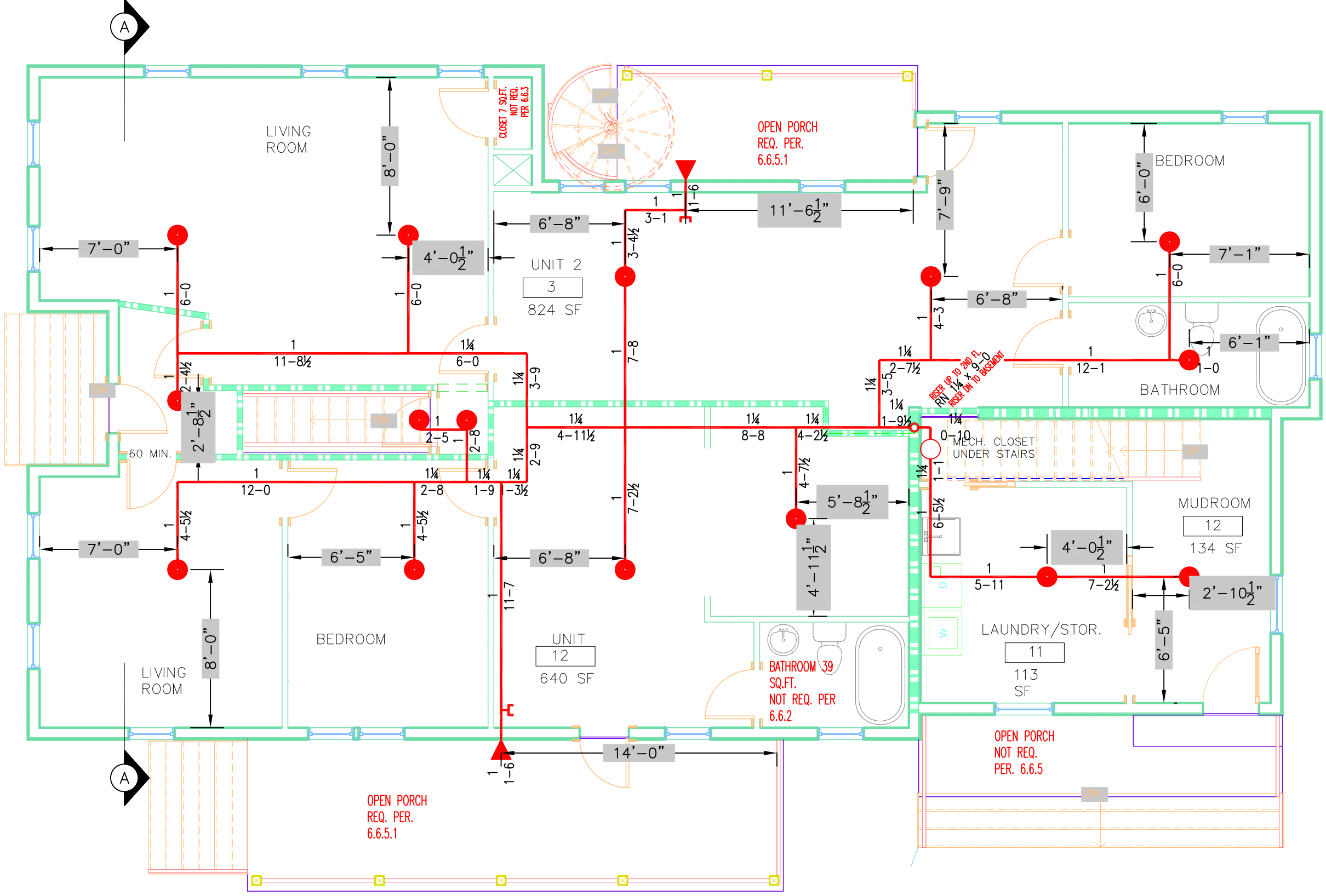
DESIGNER: TIM FORTIN
RMS# 866
NICET LEVEL III CERT. # 122193

LOCATION:
74-76 MUNJOY STREET
PORTLAND, ME 04101

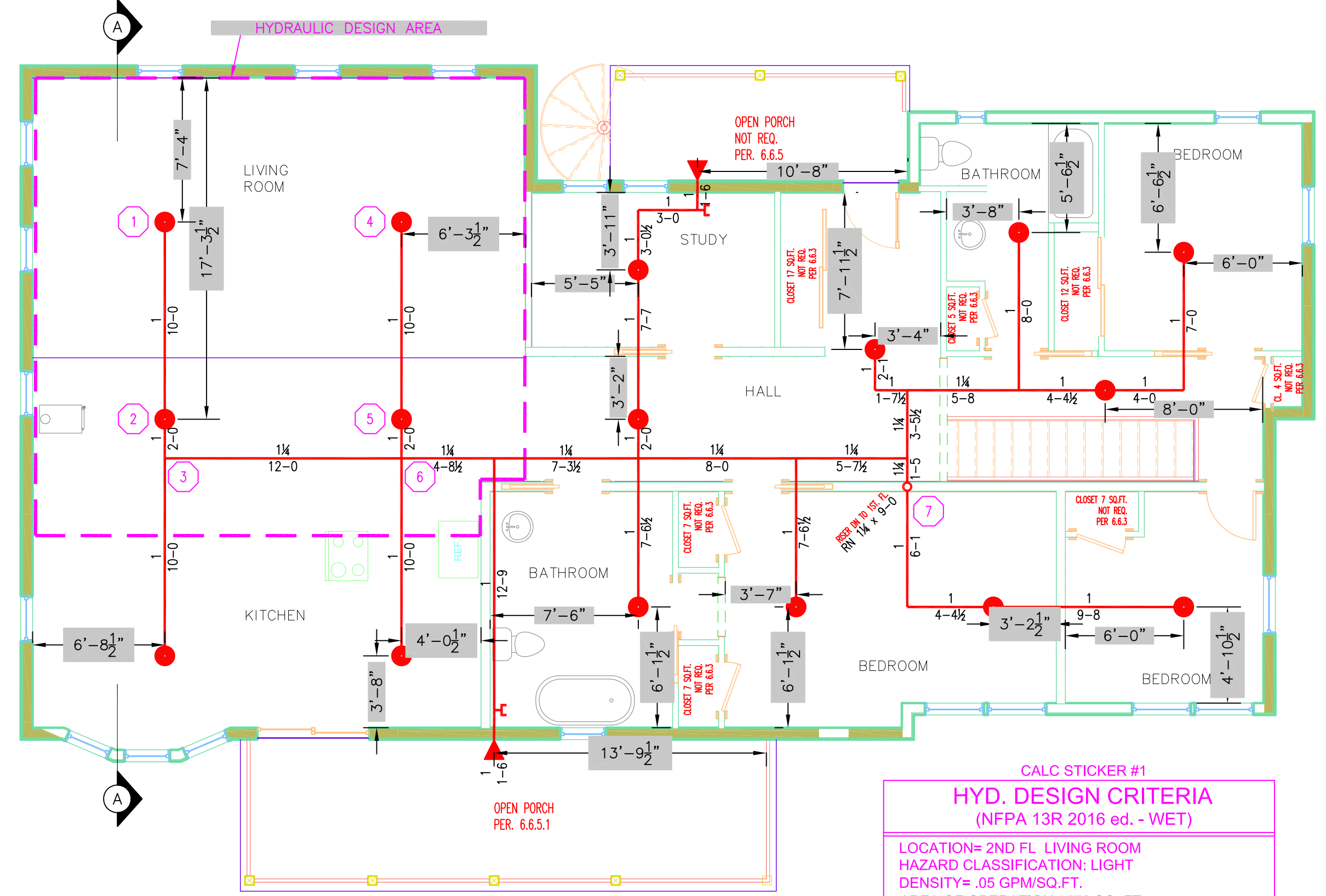
DRAWING TITLE:
**74-76 MUNJOY
3-UNIT
FIRE PROTECTION PLAN**
(NFPA 13R 2016 ed.)

DRAWING NO.:
FP-1

FIRST FLOOR
SCALE: 3/16" = 1'-0"
AREA: 1900 SQ. FT.



SECOND FLOOR
SCALE: 3/16" = 1'-0"
AREA: 1900 SQ. FT.

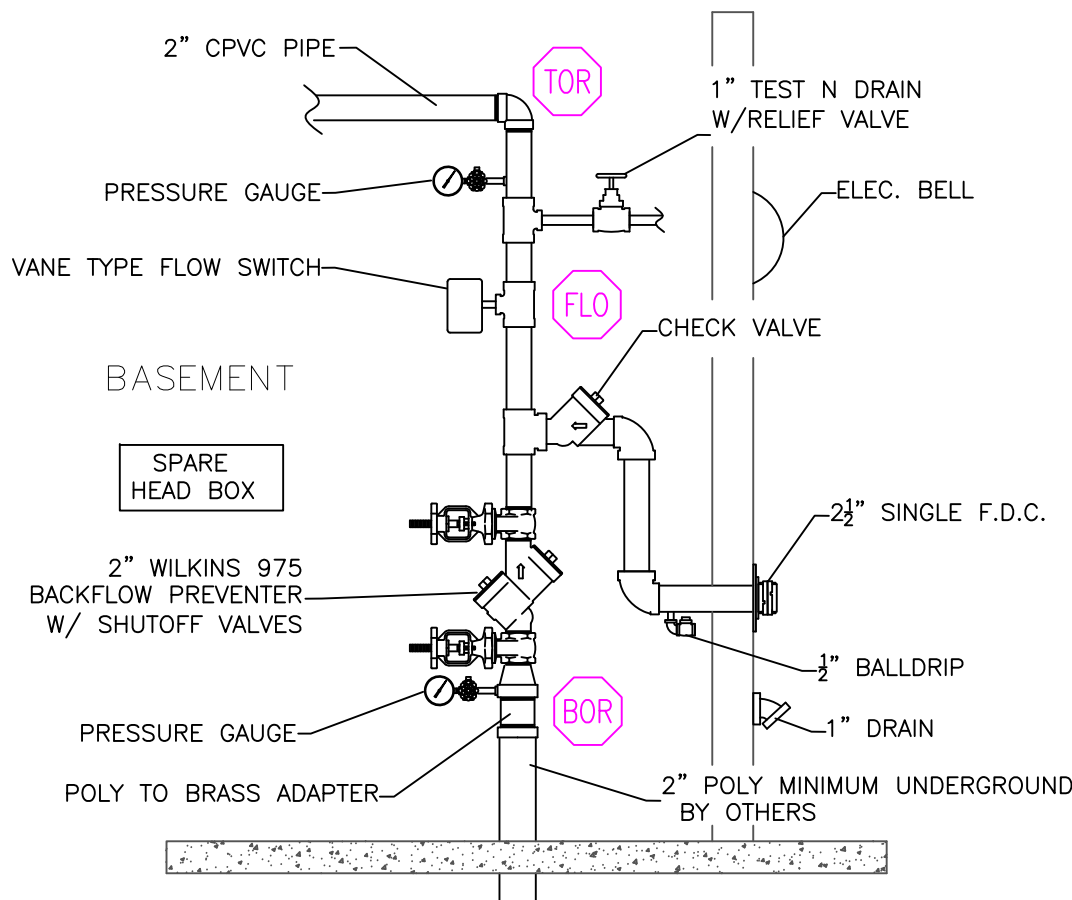
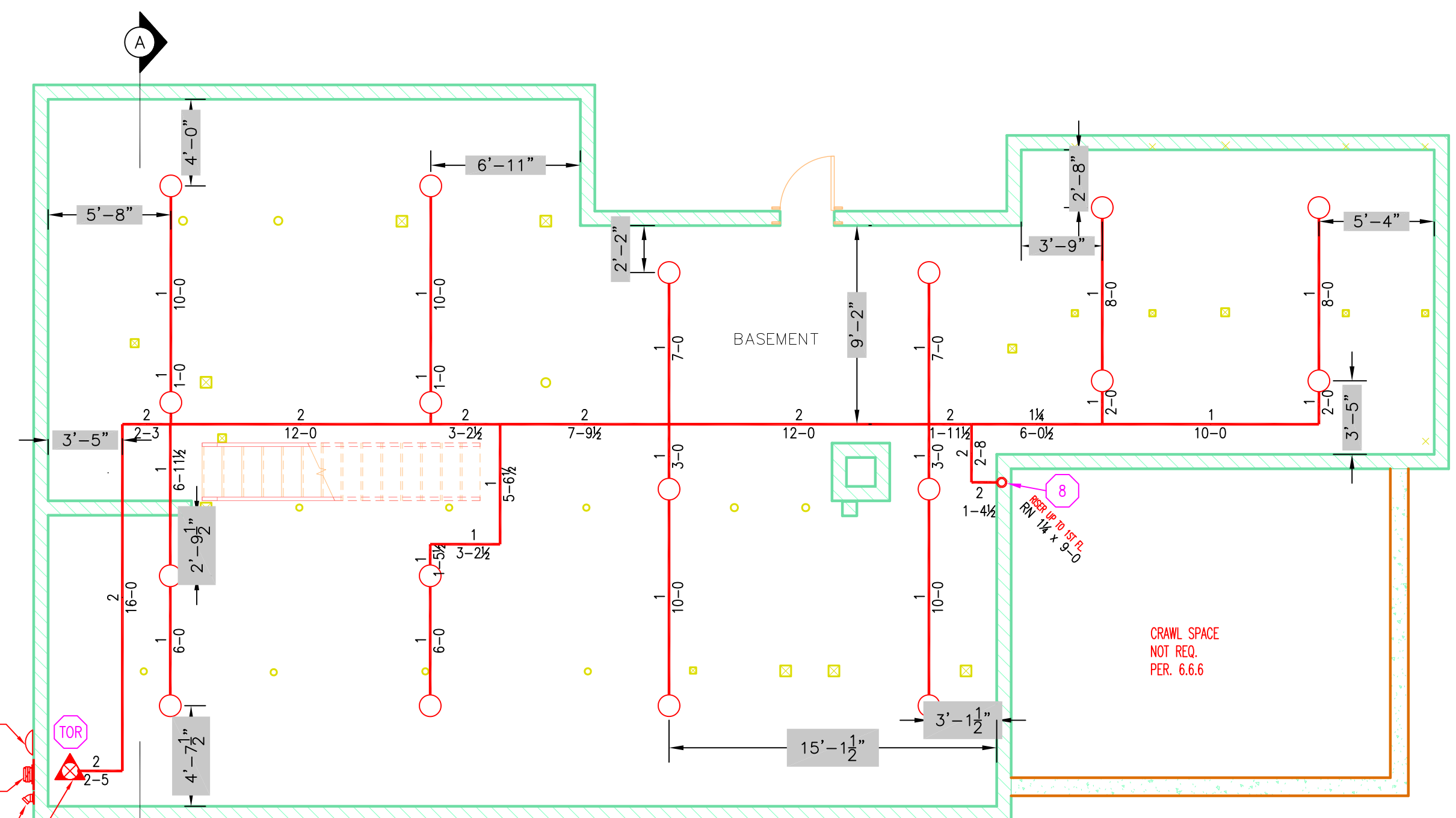


CALC STICKER #1
HYD. DESIGN CRITERIA
(NFPA 13R 2016 ed. - WET)

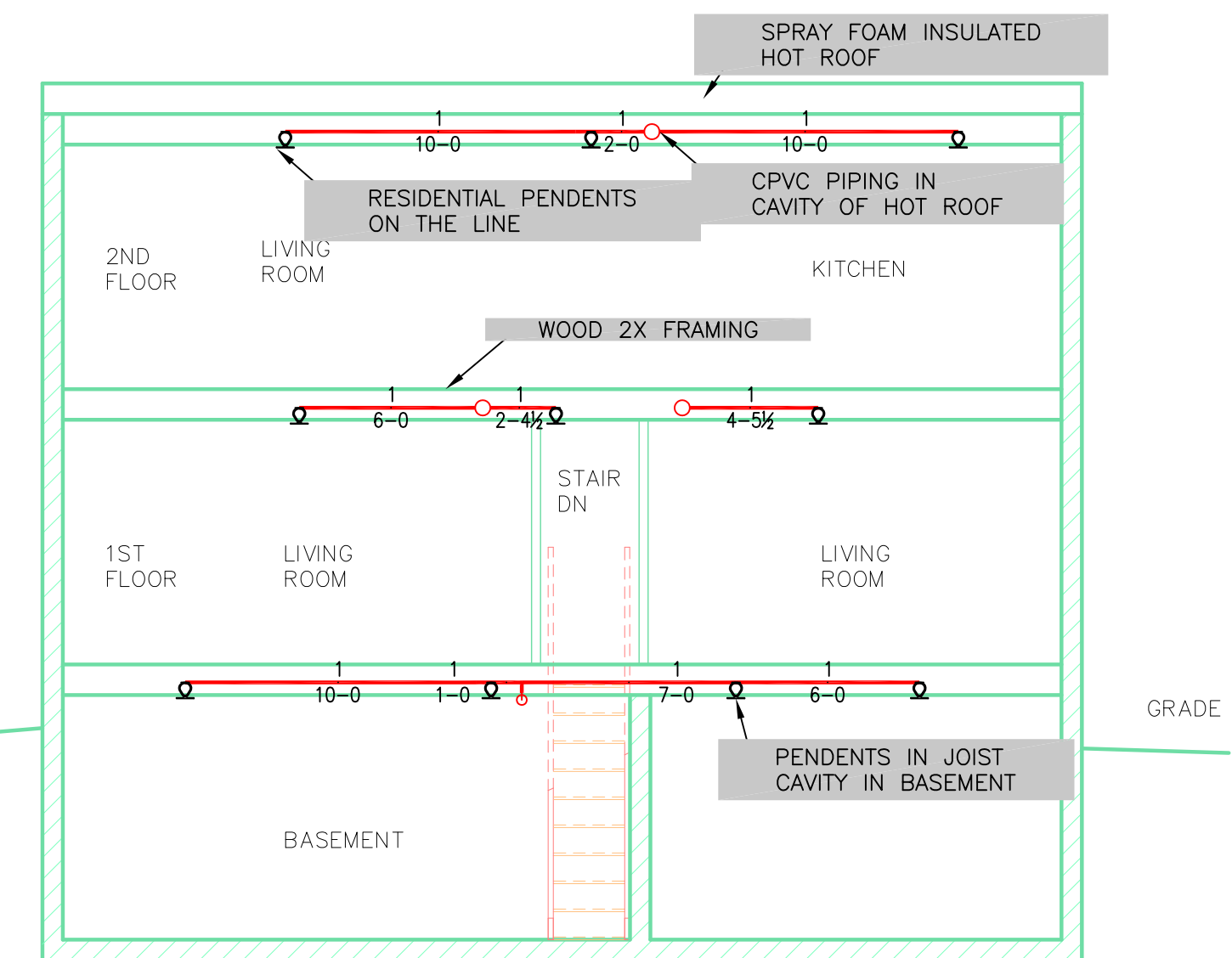
LOCATION= 2ND FL LIVING ROOM
HAZARD CLASSIFICATION: LIGHT
DENSITY= .05 GPM/SQ.FT.
AREA OF OPERATION= 570 SQ. FT.
NO. OF SPRINKLERS= 4 MOST DEMANDING

SYSTEM DEMAND (INCLUDING HOSE) @
BASE OF RISER= 53.2-GPM 42.4-PSI
SAFETY MARGIN= 8.5-PSI

BASEMENT
SCALE: 3/16" = 1'-0"
AREA: 1610 SQ. FT.



RISER DETAIL
SCALE: N.T.S.



SECTION DETAIL
SCALE: N.T.S.

