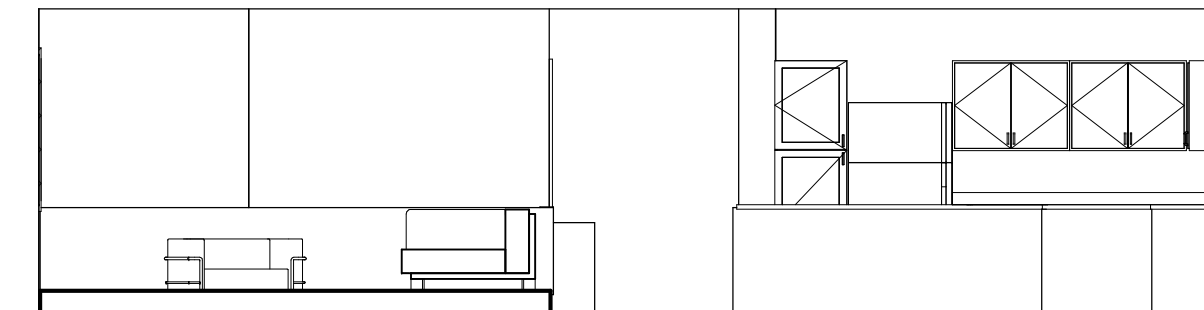
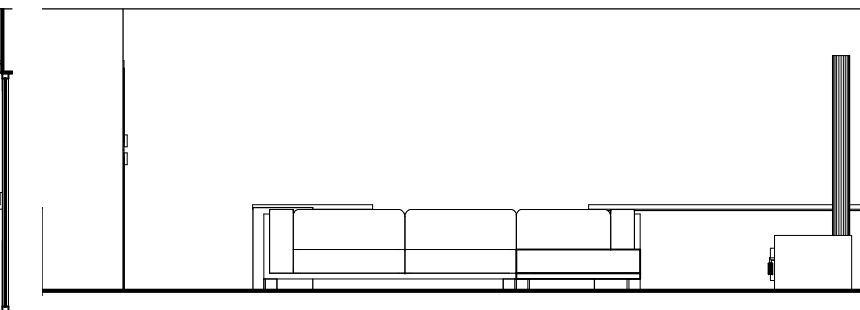


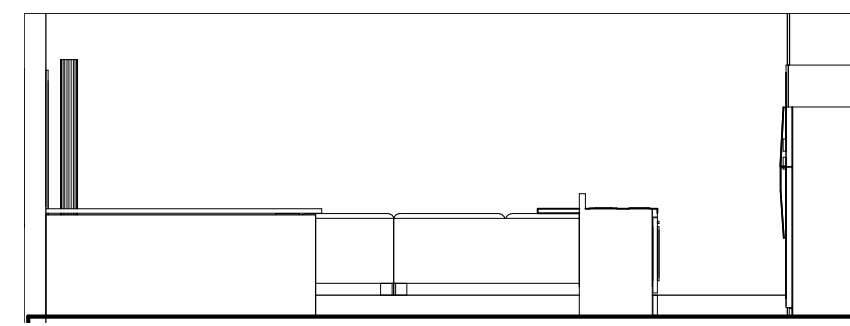
① Living Room A
3/16" = 1'-0"



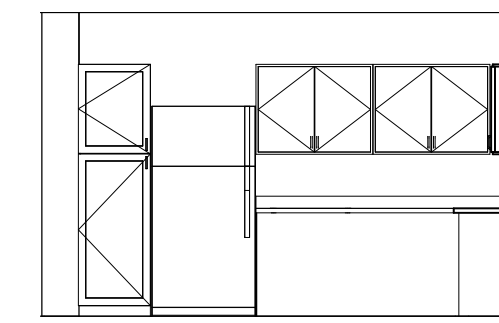
② Living Room B
3/16" = 1'-0"



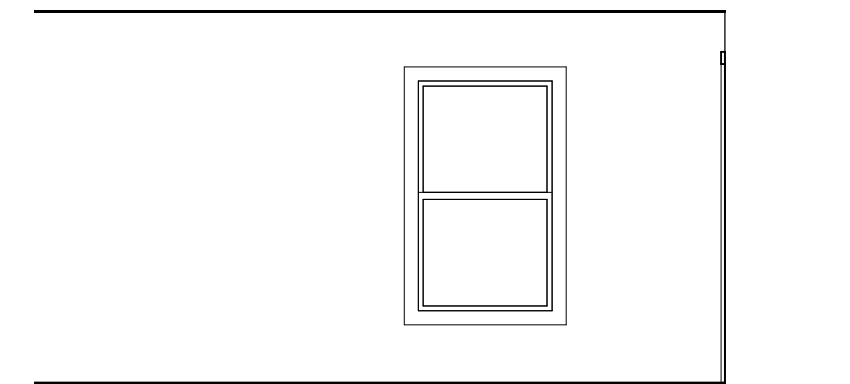
③ Living Room C
3/16" = 1'-0"



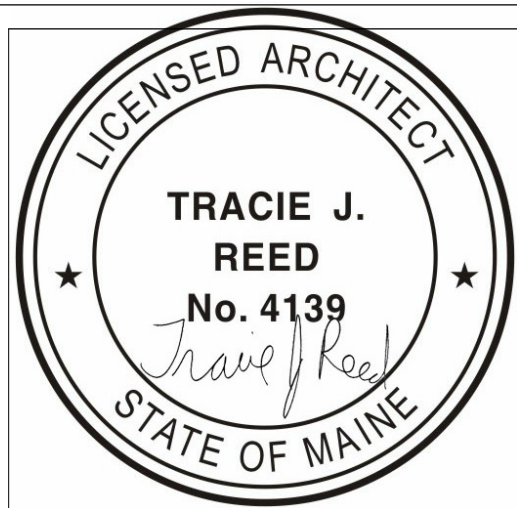
④ Dining and Kitchen
3/16" = 1'-0"



⑤ Kitchen
3/16" = 1'-0"



⑥ Mudroom
1/4" = 1'-0"



74-76 MUNJOY STREET

RENOVATION/ADDITION FOUR UNIT APARTMENT BUILDING

OWNER
JACQUELYNNE & ELIZABETH ATTERBURY
PENNSULA PROPERTIES LLC
82 BECKETT ST # 1
PORTLAND, ME 04101



DEXTROUS CREATIVE

PORTLAND, ME 04102
TRACIE REED, ARCHITECT
1242B, VIA LEEB AT 1804C
traciereed@dextrouscreative.com
207.639.0459 (cell)

PROJECT TEAM

GENERAL CONTRACTOR
JACQUELYNNE
PENNSULA PROPERTIES LLC
82 BECKETT ST # 1
PORTLAND, ME 04101

STRUCTURAL ENGINEER
ALBIONSON
RESURGENCE ENGINEERING
61 INDIA STREET, SUITE 7
PORTLAND, ME 04101
ALB@RESURGENCEENGINEERING.COM
207.635.9895 (CELL)

No.	Description	Date

Interior Elevations

Project number 16-28_74 MUNJOY

Date 04.10.17

Drawn by Author

Checked by Checker

A-4.1

Scale As indicated