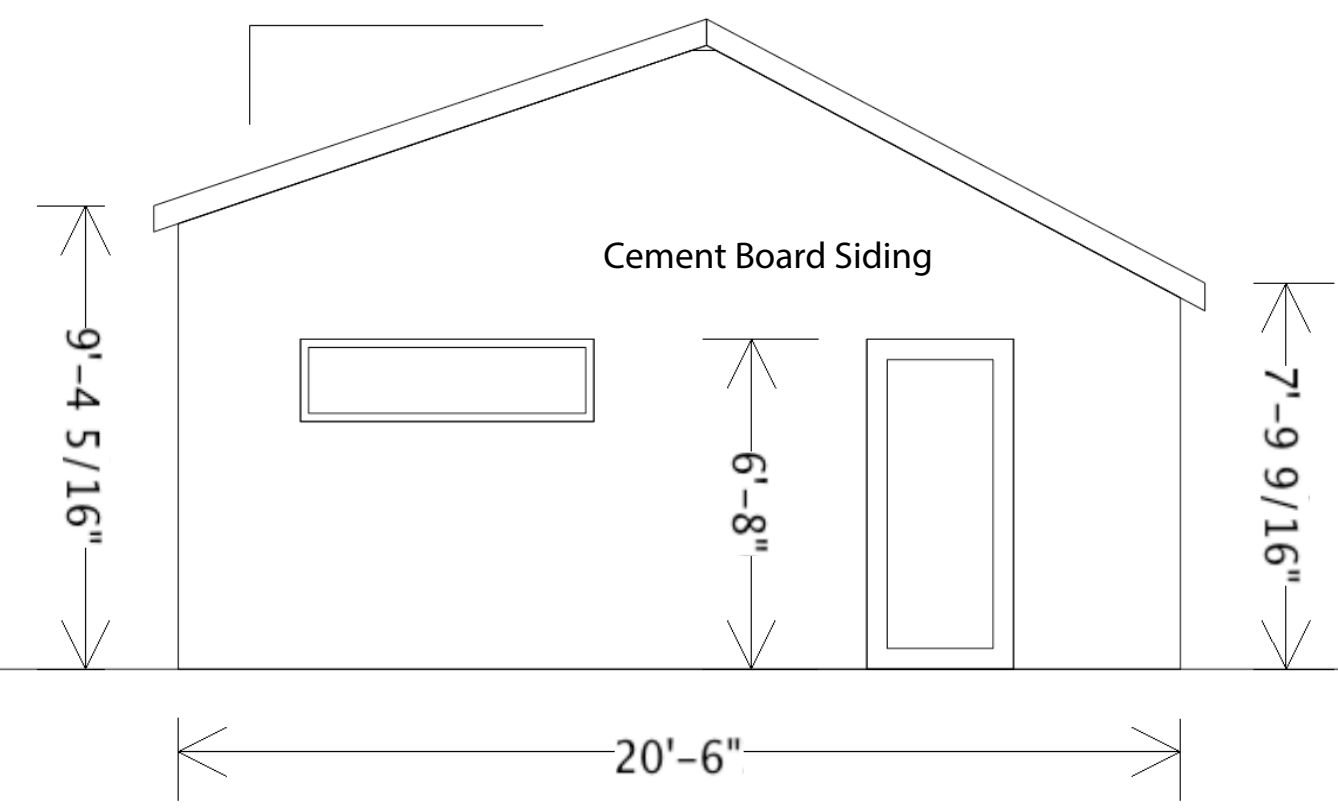
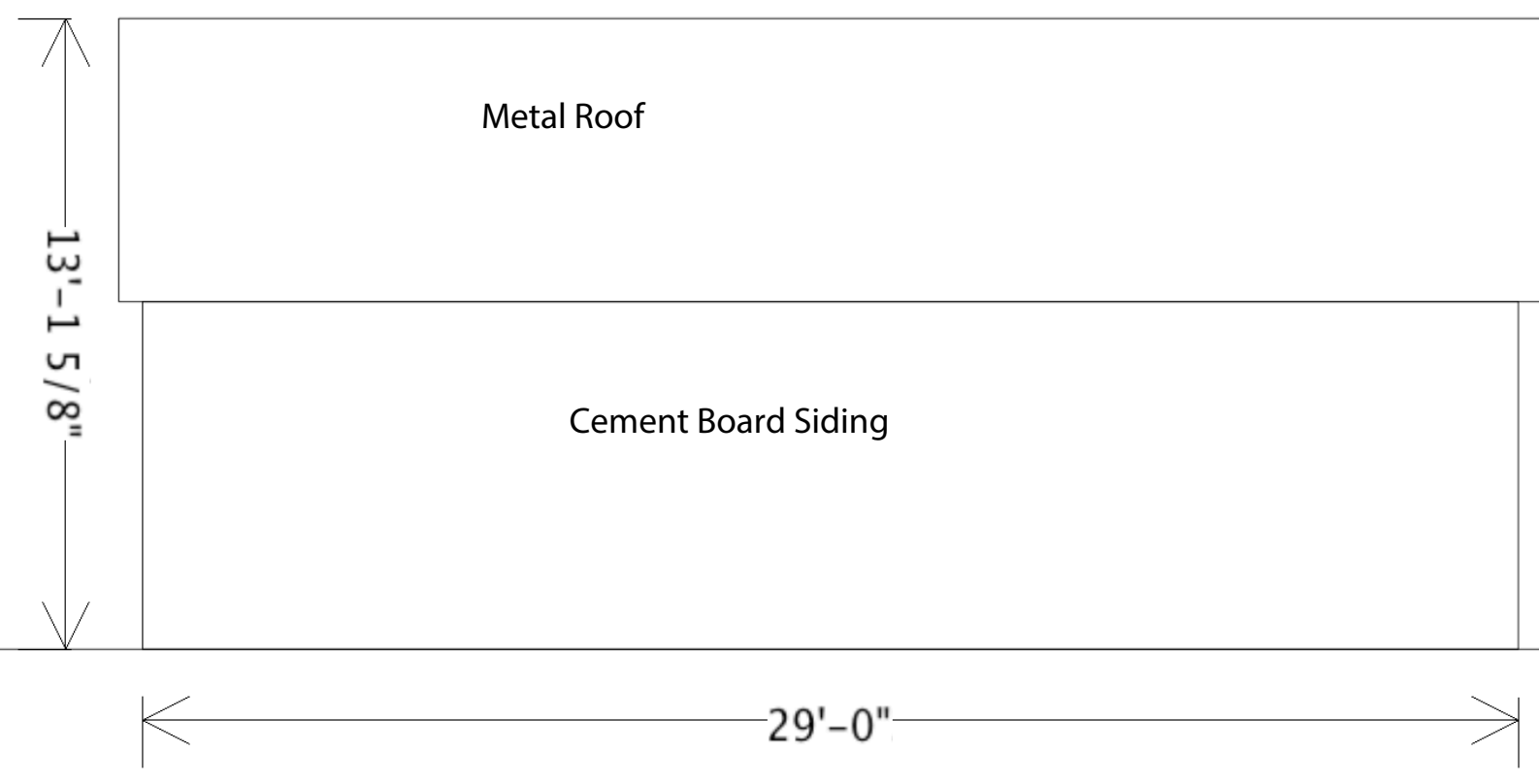


FIRST FLOOR PLAN 1/4" = 1'-0"

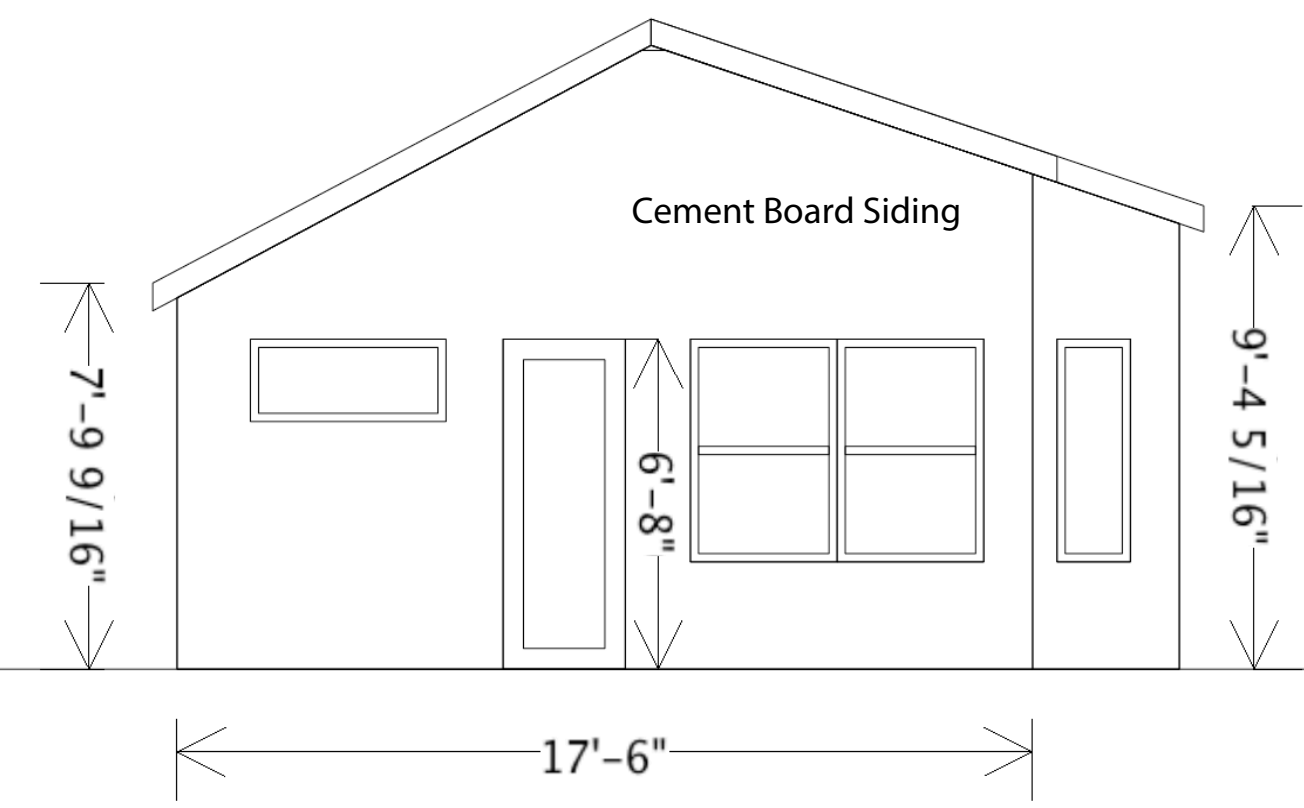
Ⓢ Combination smoke and carbon monoxide detectors



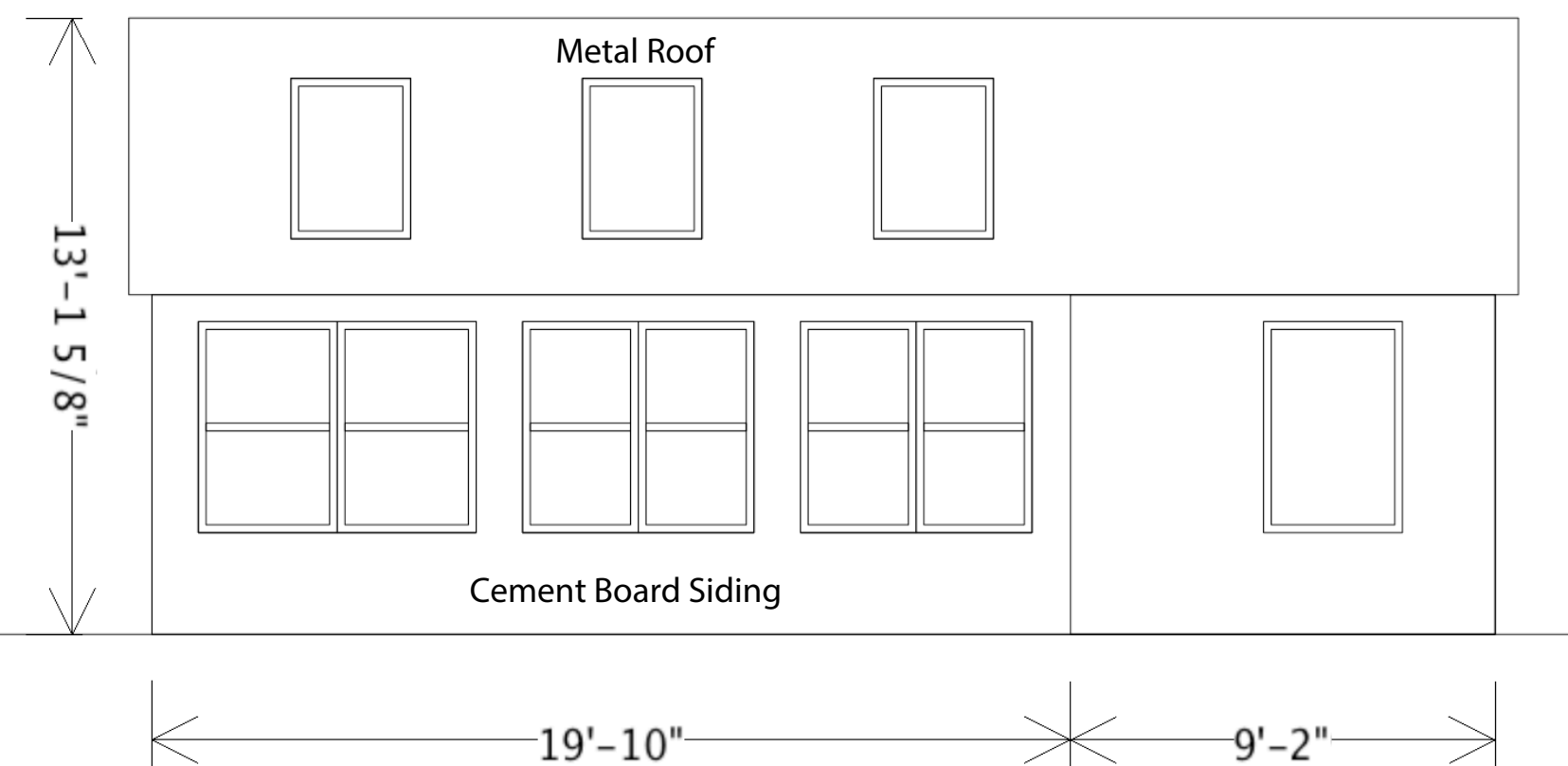
SOUTHEASTELEVATION 1/4" = 1'-0"



NORTHEAST ELEVATION 1/4" = 1'-0"



NORTHWEST ELEVATION 1/4" = 1'-0"



SOUTHWEST ELEVATION 1/4" = 1'-0"

**Project Description: Build a 475SF single level single family.**

CODES:  
 IRC 2009 - Single Family  
 NFPA 2009 - Sprinkler System 13D  
 NFPA 101  
 3.3.32.5 New Building  
 6.1.8.1 Residential Occupancy  
 6.1.8.1.1 Single Family Dwelling Unit  
 6.2.2.3 Ordinary Hazard of Contents  
 7.3.1 Occupancy load: 200  
 Gross 501sf = 3 Occupants  
 Number of Exits = 2  
 IECC - Climate Zone 6  
 402.1.1 Fenestration U-Factor 0.35  
 Ceiling R-Value 49  
 Wall R-Value 21  
 Basement R-Value 10  
 Zoning- Land Use Code Chapter 14  
 Zone: R-6  
 Side Setback: 5', or 0' if combined = 10', with easement  
 Rear Setback: 10'  
 Front Setback: 9"= the average depth of the front yards  
 1 Monument St = 1'-6" and 7 Monument St = 0'-0"

**List of Drawings**

- AR - Architectural
- ST - Structural
- SITE-Site Plan
- SUR - Survey
- RES-REScheck

Component	Assembly	Gross Area	Cavity Insulation R-Value	Continuous Insulation R-Value	U-Factor	Depth of Insulation	Wall Height	Depth Below Grade
1	Ceiling	465 ft <sup>2</sup>	55	49	0.01			
2	1. Skylight	40 ft <sup>2</sup>			0.55			
3	Wall	638 ft <sup>2</sup>	29.2	23.1	0.023			
4	1. Window	138 ft <sup>2</sup>			0.25			
5	FLOOR	37 ft <sup>2</sup>			0.35			
6	Basement	475 ft <sup>2</sup>	30	8	0.044	6 ft	6 ft	6 ft