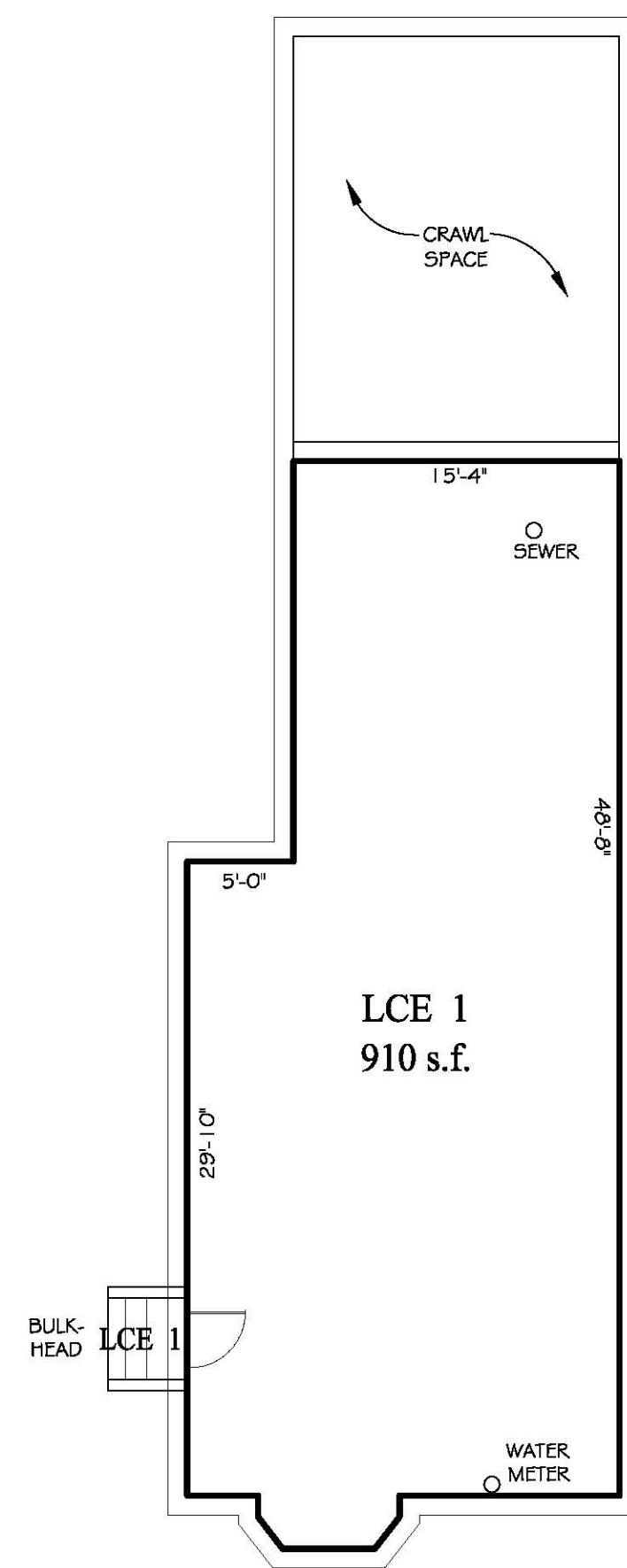
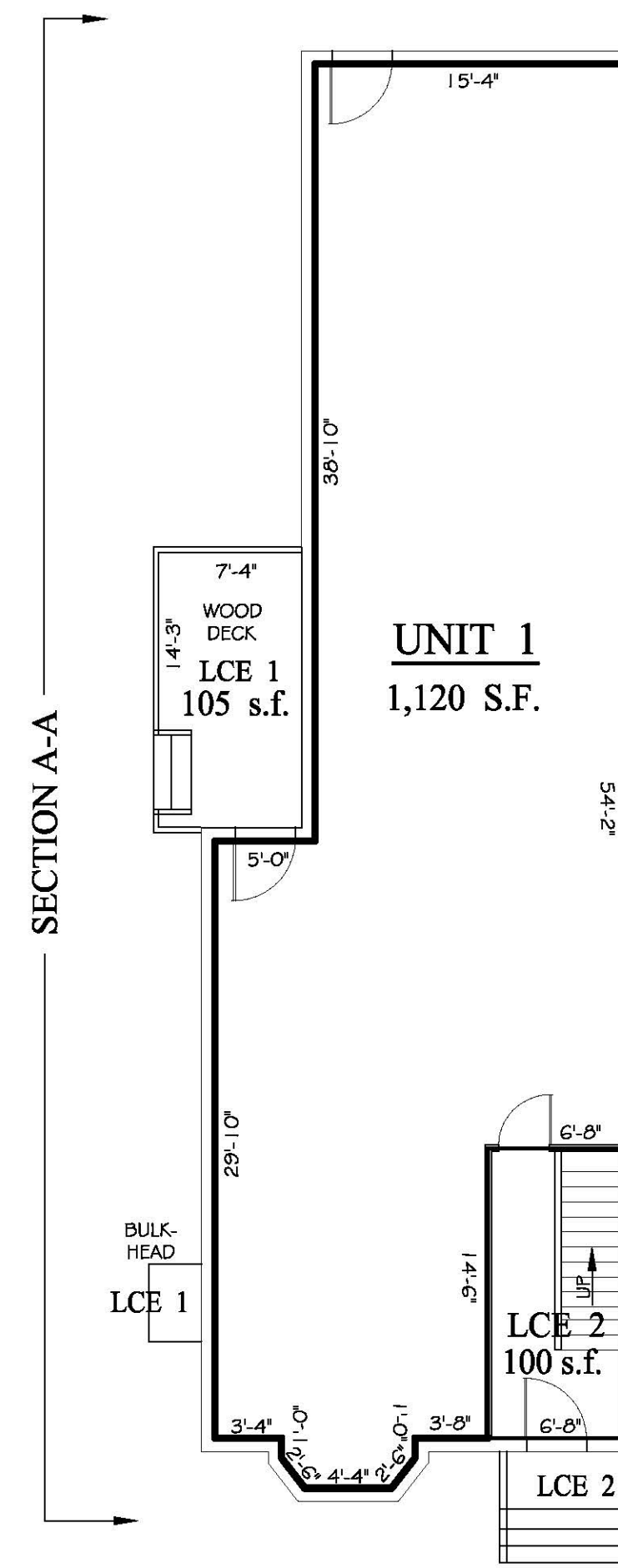


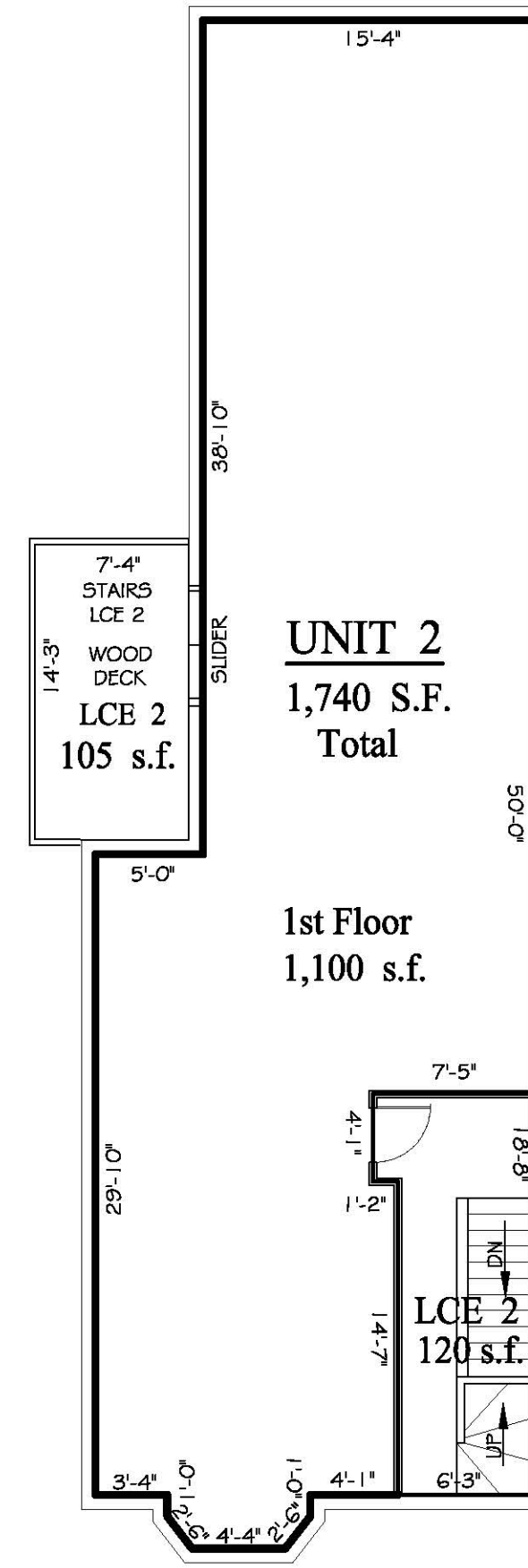
GARAGE



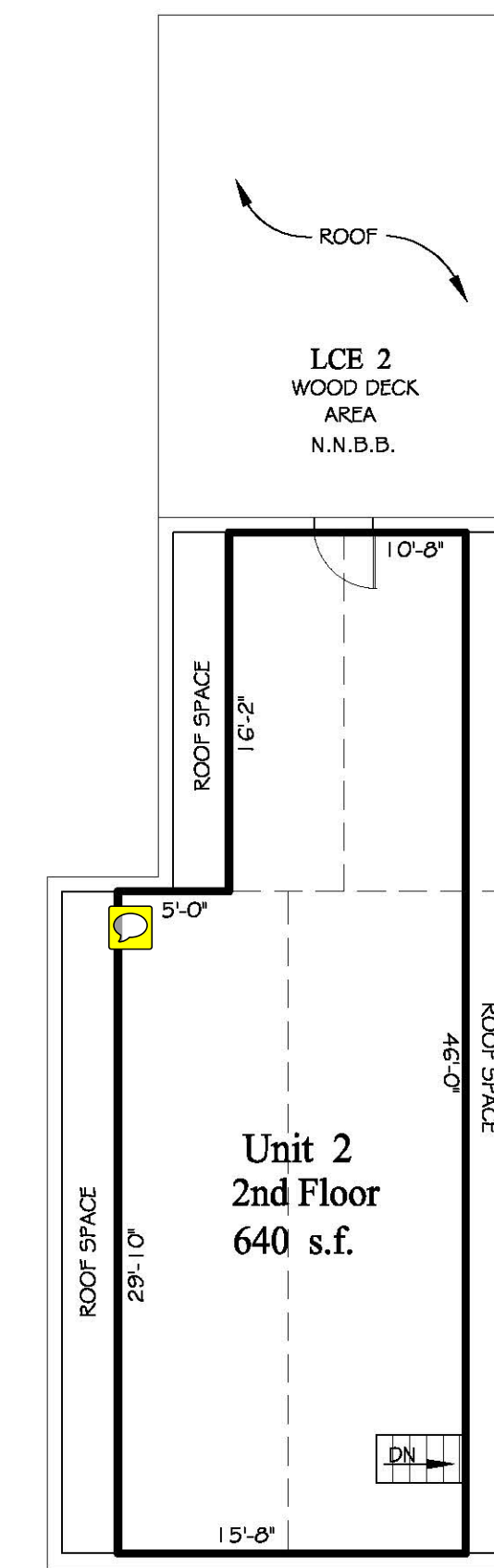
BASEMENT



FIRST FLOOR



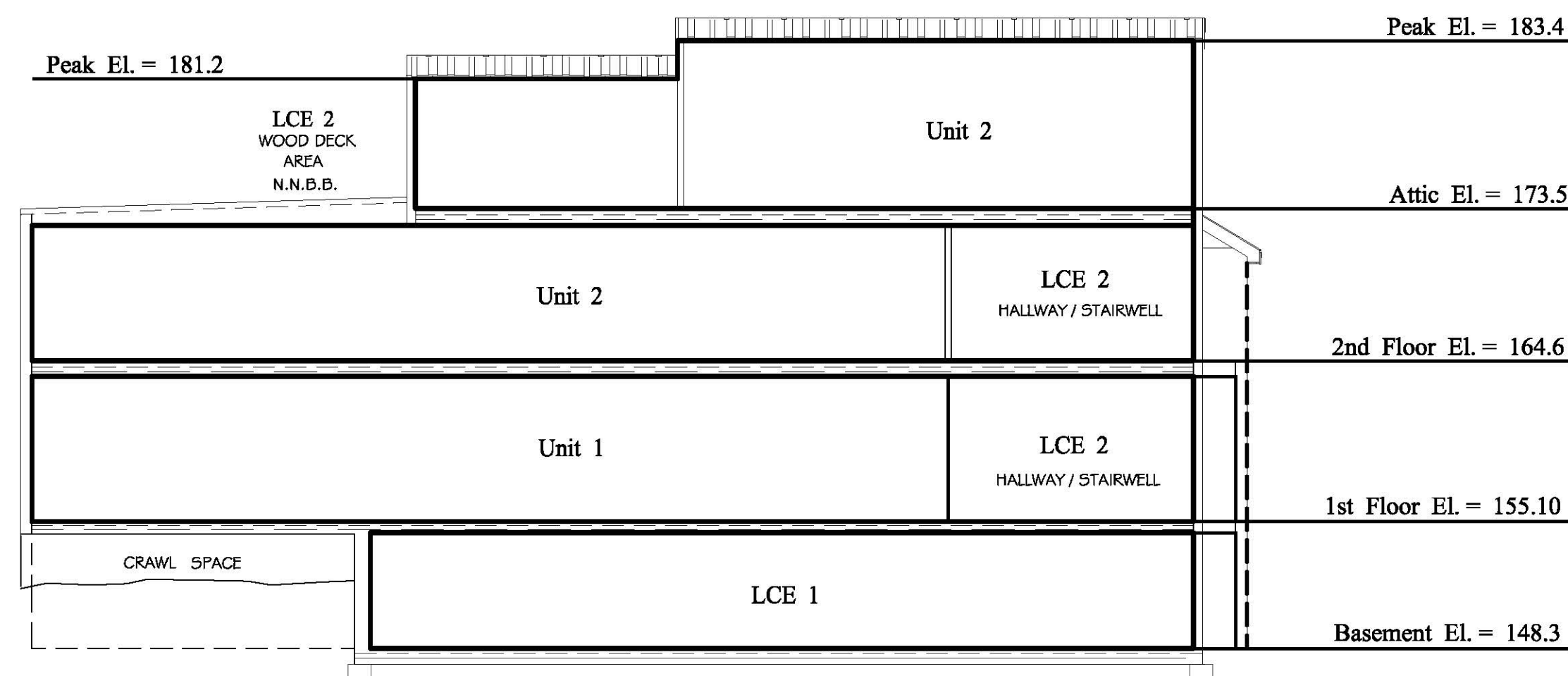
SECOND FLOOR



ATTIC FLOOR

Dormer located on driveway side of third floor, as highlighted.

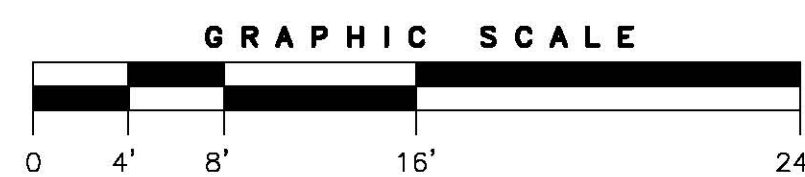
← MELBOURNE STREET →  
VERTICAL BOUNDARY



HORIZONTAL BOUNDARY

NOTE: ELEVATIONS BASED ON CITY DATUM

**LEGEND:**  
 CE COMMON ELEMENT  
 LCE LIMITED COMMON ELEMENT  
 UNIT BOUNDARY  
 N.N.B.B. NEED NOT BE BUILT



RANDY R. LOUBIER, PLS NO. 2407

**HORIZONTAL & VERTICAL BOUNDARIES**  
**"MELBOURNE ON THE PROM CONDOMINIUM"**  
 73 MELBOURNE STREET, PORTLAND, MAINE  
 MADE FOR OWNER OF RECORD  
**TWS CONSULTING & DEVELOPMENT, LLC**  
 29 DERBY LANE, NORTH YARMOUTH, MAINE

**OWEN HASKELL, INC.**  
 390 U.S. ROUTE ONE, FALMOUTH, ME 04105 (207) 774-0424  
 PROFESSIONAL LAND SURVEYORS

Drwn By	EB	Date	MAY 19, 2016	Job No.	2016-124P
Trace By	JLW				
Check By	RRL	Scale	1' = 1/8"	Drwg. No.	2 OF 2
Book No.	FILE				