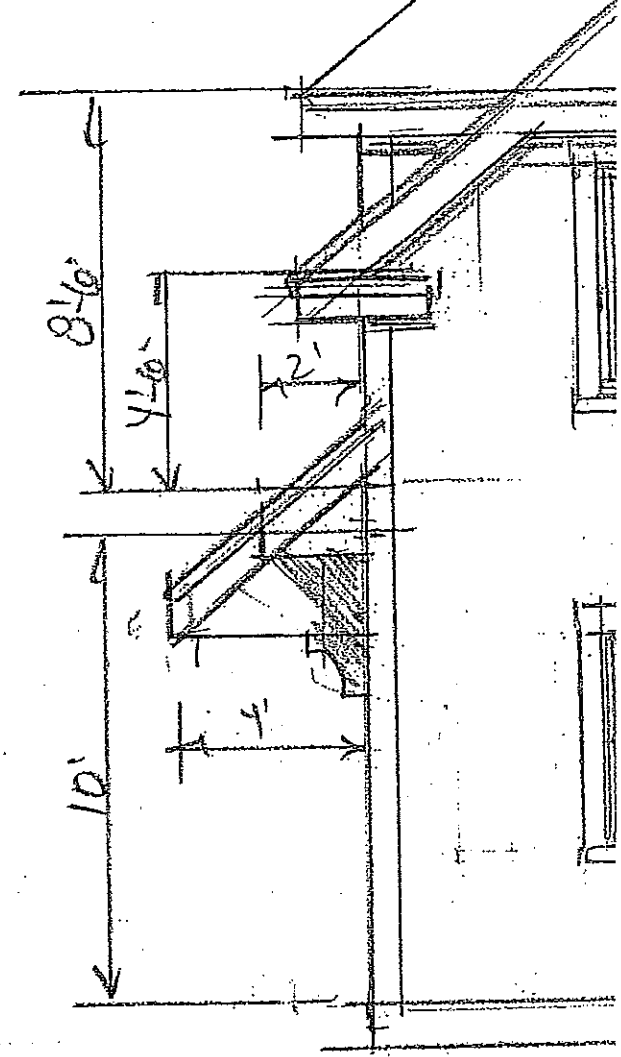


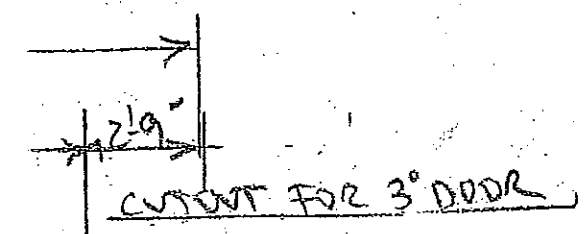
EAST ELEVATION

INSULATED DOORS w/ VERTICAL CEDAR OR VERSATEK VERTICAL V MATCH OR BEADED BOARD VENEER



2ND FLOOR PLAN

① ANDERSON WINDOWS  
BEDROOM WINDOWS MEET EGRESS CODES OF 5.7 SQ FT  
MINIMUM CLEAR OPENING



Structural plans submitted

AN OPTIONAL CENTER PANEL OF PLEXIGLASS  
OR TEMPERED GLASS

HEIGHT AS CODE  
REQUIRES - 42" HIGH  
SHOWN

POSTS  
KING TO BE DECIDED

DECORATIVE BRACKETS

CONNECTING BRIDGE/WALK

STEEL BEAMS - 17' SPAN  
(SIZE BY SUPPLIER)

CEDAR CLAPBDS

GRADE  
CONNE  
SIDE

POSTS  
PAVE

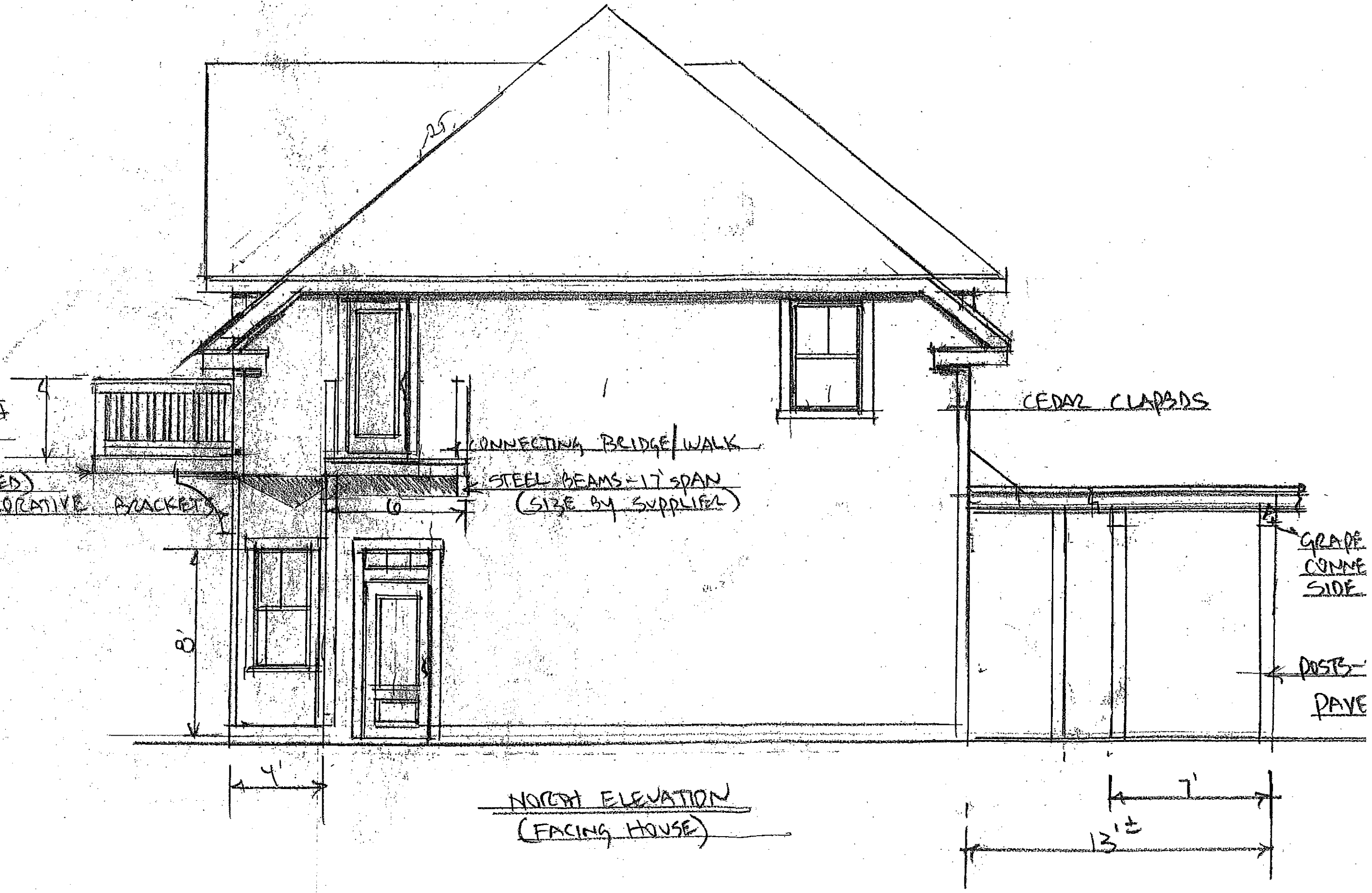
8'

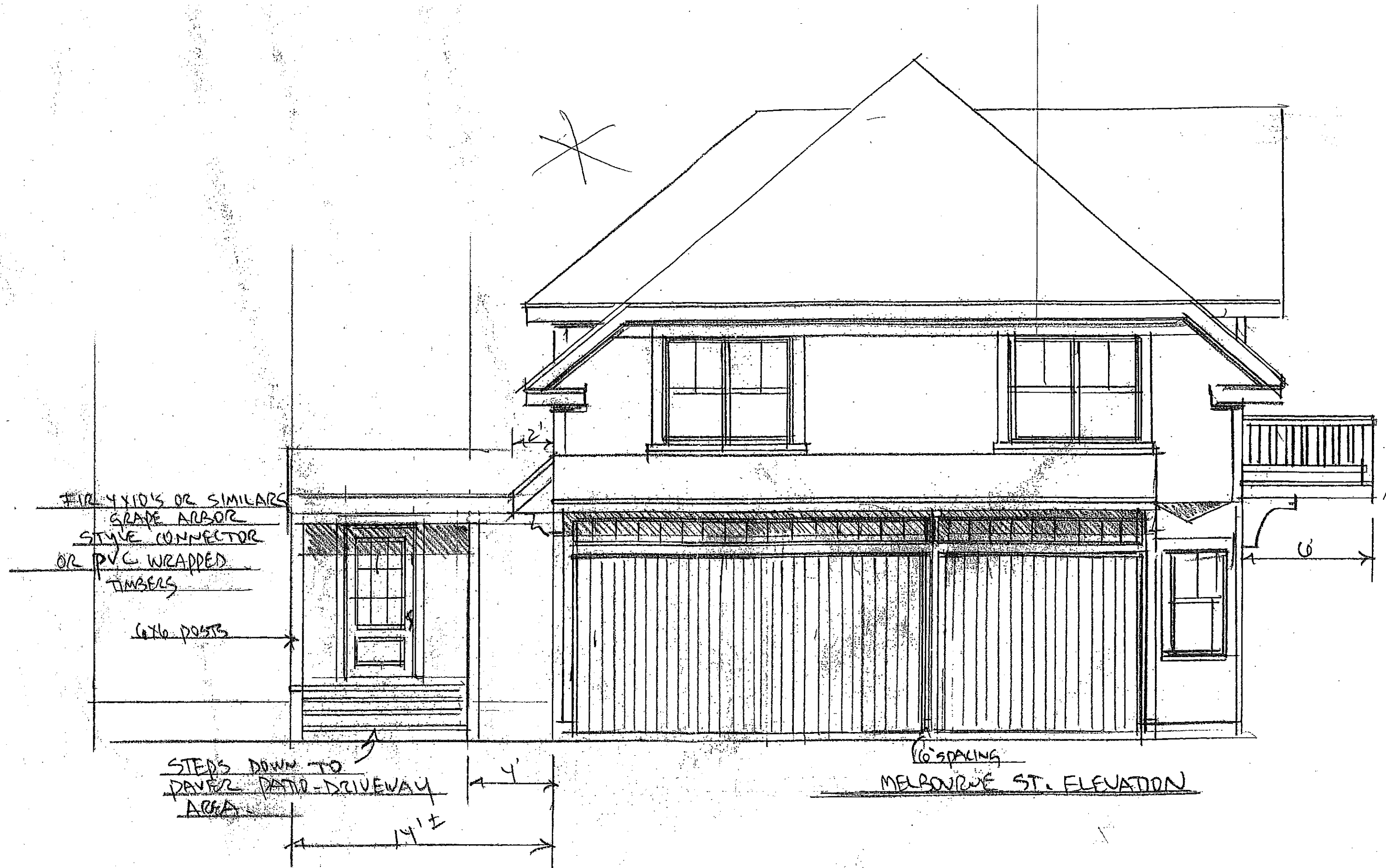
4'

NORTH ELEVATION  
(FACING HOUSE)

7'

13'±





#10 4x10'S OR SIMILARS  
GRADE A OR B OR  
STYLE CONNECTOR  
OR PVC WRAPPED  
TIMBERS

6x6 POSTS

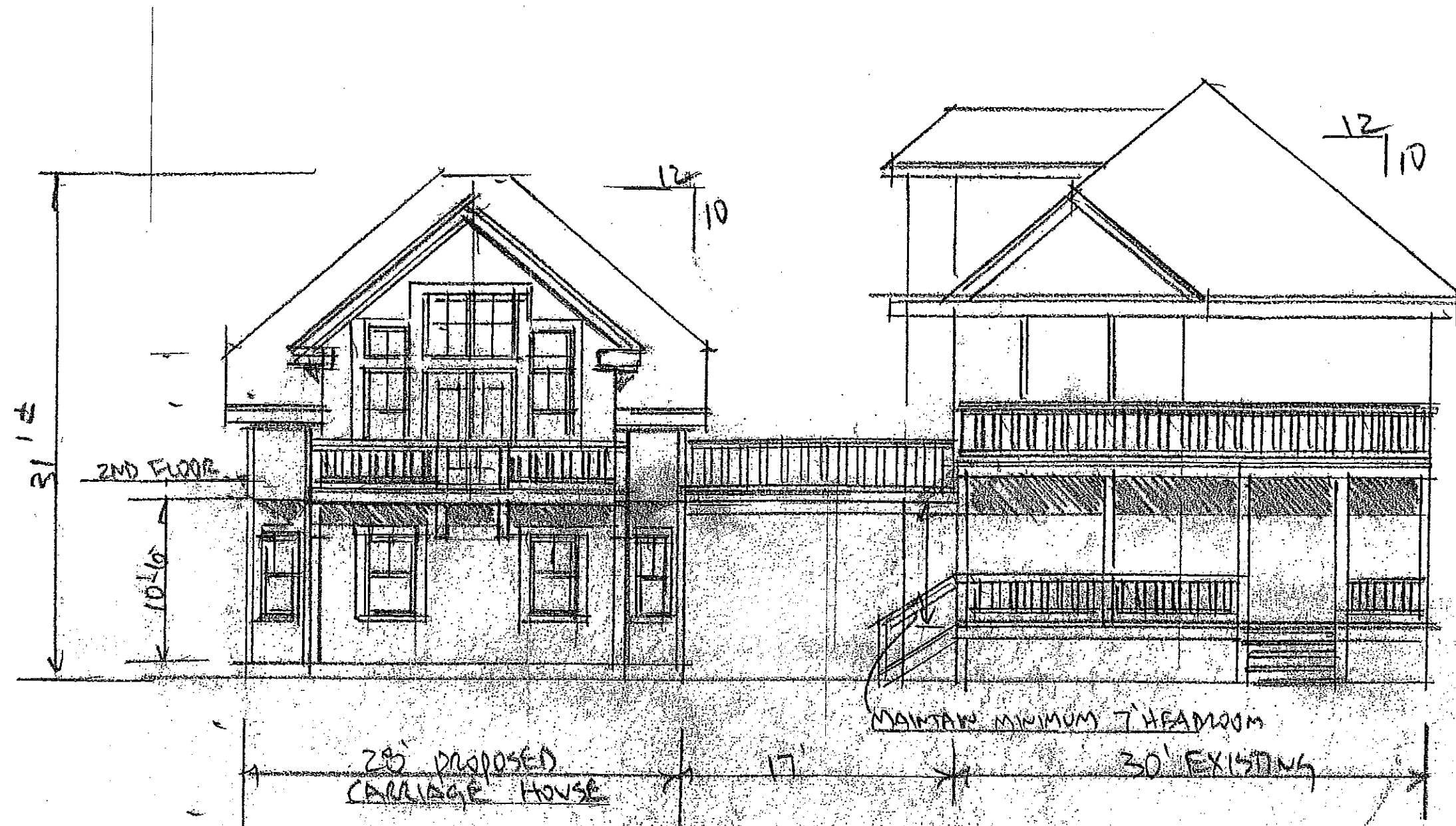
STEPS DOWN TO  
PAVED PATIO-DRIVEWAY  
AREA

4'±

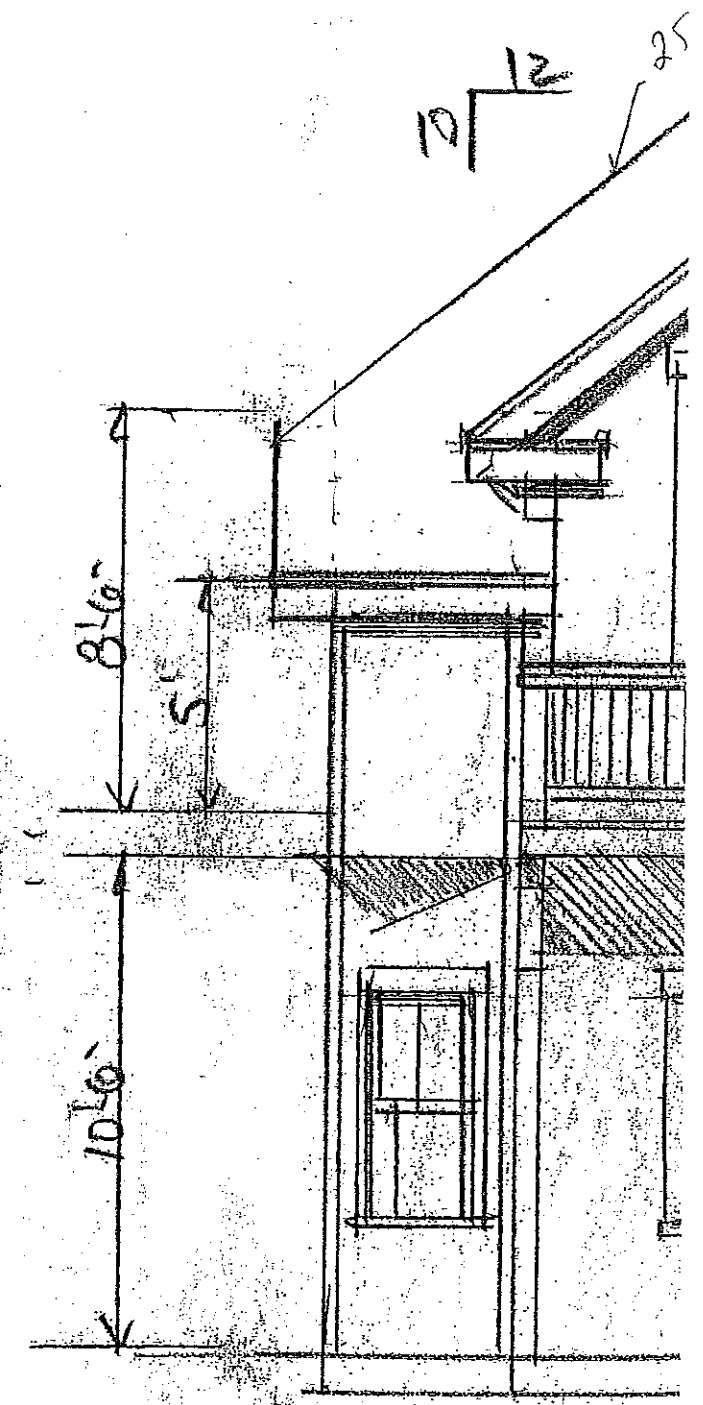
14'±

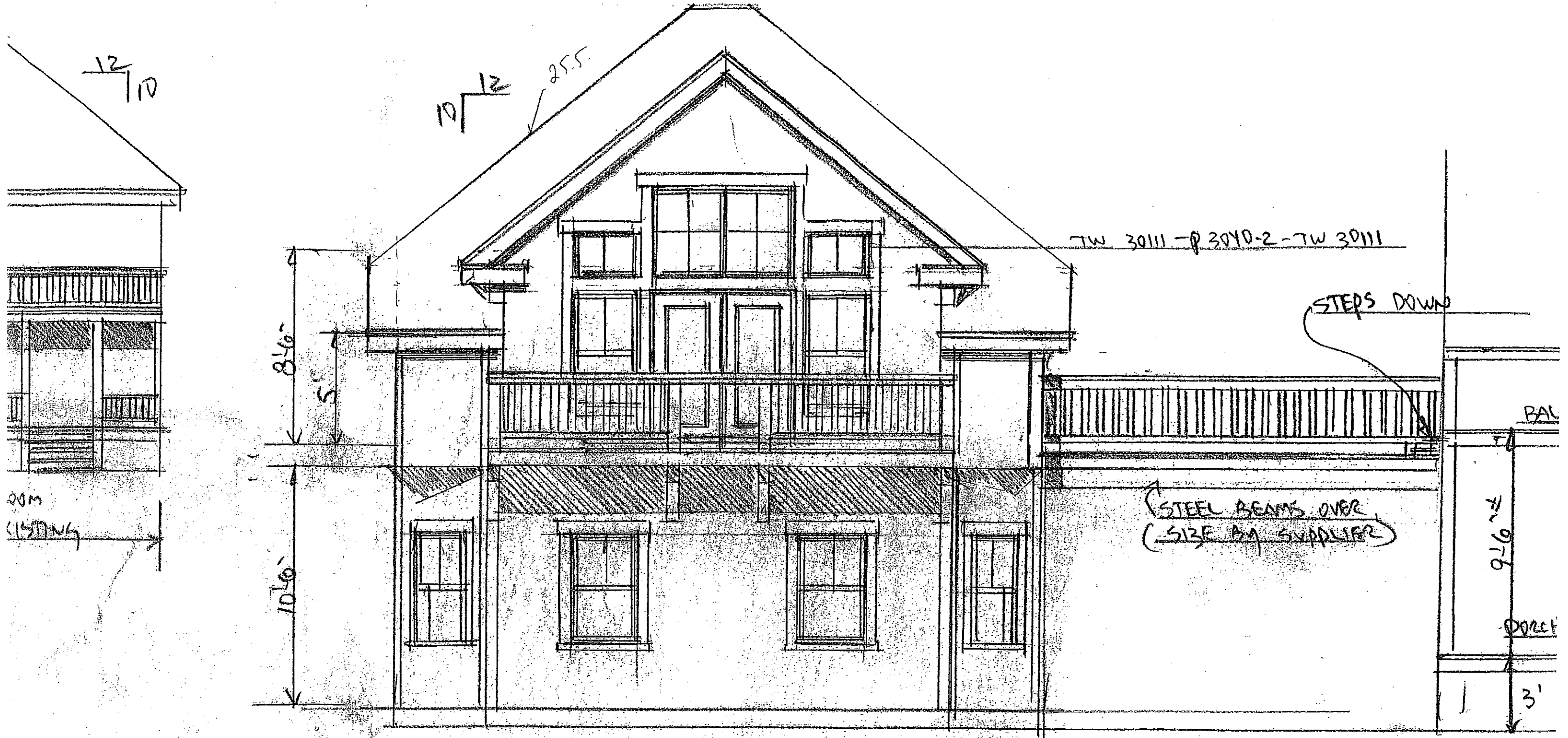
6" SPACING  
MELBOURNE ST. ELEVATION

6'



EASTERN PORCH ELEVATION  
SCALE 1/8"=1'





12/10

10/12 25.5

TW 3011 - P 3040-2 - TW 3011

STEPS DOWN

STEEL BEAMS OVER  
(SIZE BY SUPPLIER)

BAL

9'6"

DOOR

3'

EXIST

8'6"

10'6"

17'

EASTERN PROM ELEVATION:

① BALCONY RAILING IS SHOWN WITH AN OPTIONAL CENTER PANEL OF ALEXIGLASS OR TEMPERED GLASS

