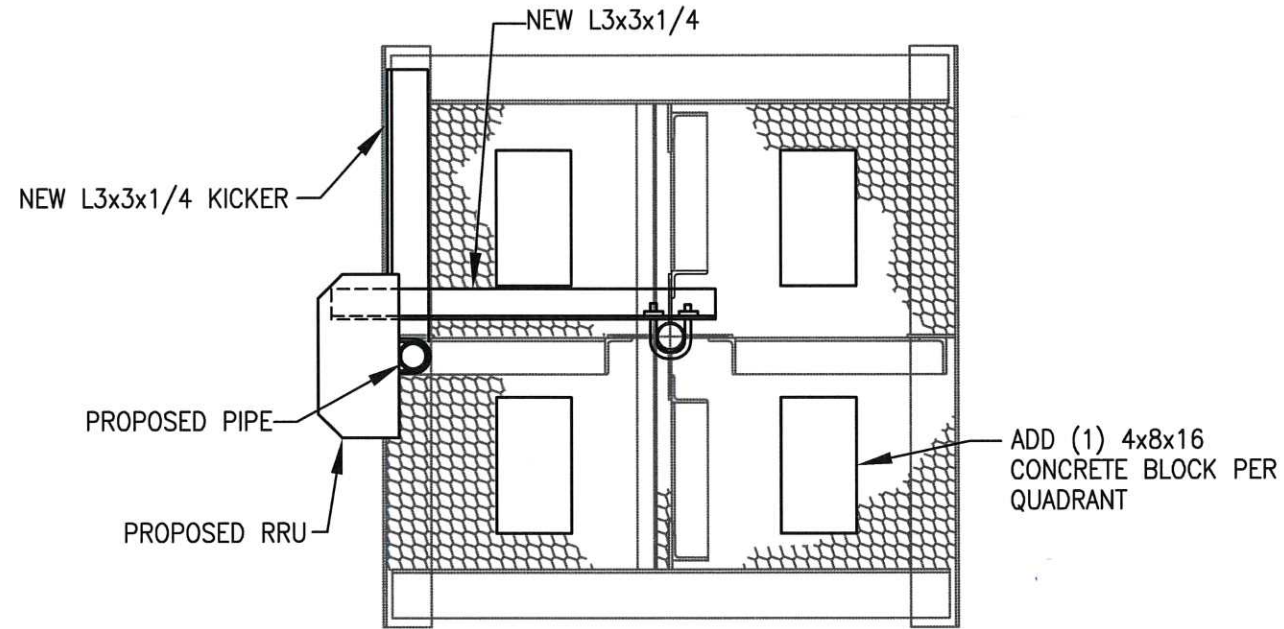


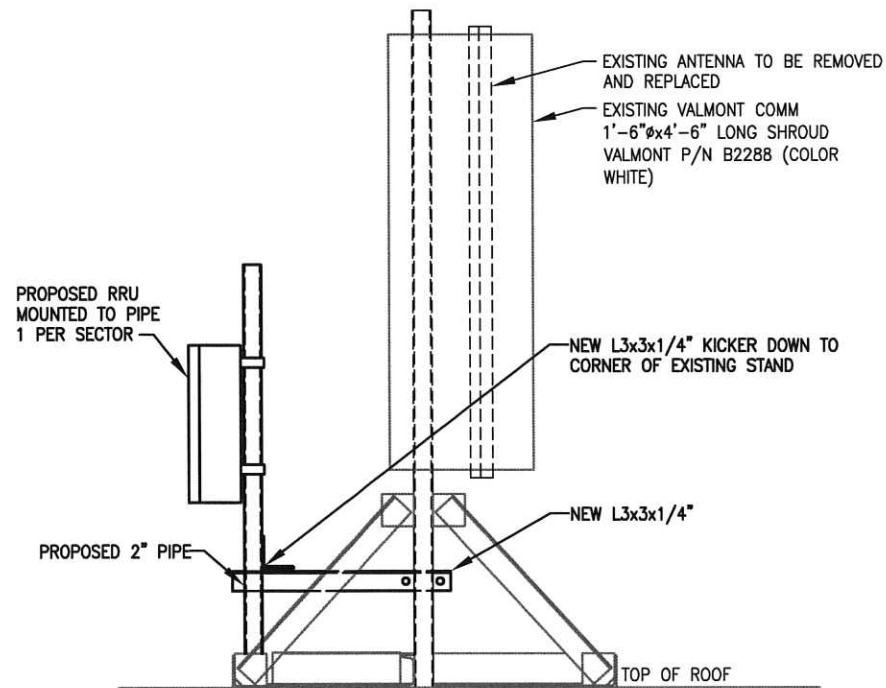
EXISTING CABLE TRAY CONFIGURATION

SCALE: N.T.S.



EXISTING ANTENNA STAND DETAIL

SCALE: N.T.S.



EXISTING ANTENNA STAND SECTION

SCALE: N.T.S.

EXISTING ANTENNA/COAX SCHEDULE					
SECTOR	MANUFACTURER (MODEL #)	MOUNTING HEIGHT	AZIMUTH	COAX SIZE	NOTES
ALPHA	EMS RR65-18-VDPL2	⊕ 238'-0"	0°	(1) 1 5/8"	ANTENNA TO BE REMOVED, CABLES TO REMAIN
BETA	EMS RR65-18-VDPL2	⊕ 242'-0"	120°	(1) 1 5/8"	
GAMMA	EMS RR65-18-VDPL2	⊕ 247'-0"	245°	(1) 1 5/8"	

PROPOSED ANTENNA/COAX SCHEDULE								
SECTOR	TECHNOLOGY	MANUFACTURER (MODEL #)	MOUNTING HEIGHT	AZIMUTH	COAX SIZE	KMW TEE	HYBRID	COAX LENGTH
ALPHA	LTE BAND 2	KATHREIN SCALA 800 10510V01	⊕ 238'-0"	0°	(2) 1 5/8"	1	1.14"	180'±
BETA	LTE BAND 2	KATHREIN SCALA 800 10510V01	⊕ 242'-0"	120°	(2) 1 5/8"	1		272'±
GAMMA	LTE BAND 2	KATHREIN SCALA 800 10510V01	⊕ 247'-0"	245°	(2) 1 5/8"	1		330'±

PLEASE REFER TO ONE-LINE DIAGRAM (E-1) FOR WIRING SCHEMATIC

PLANS PREPARED FOR:



PROJECT INFORMATION

853332 - PROMENADE EAST
340 EASTERN PROMENADE
PORTLAND, ME 04101
(CUMBERLAND COUNTY)

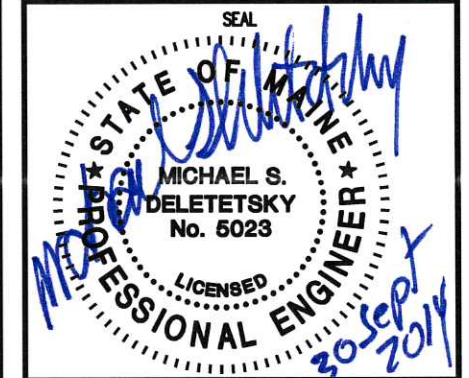
PLANS PREPARED BY:



511 Congress St, Portland ME 04101
P: (207) 828-2623 F: (207) 774-1246 www.amec.com

PROJECT COORDINATION & MANAGEMENT:

KJK Wireless, LLC
127 Ridge Road, Nashua, NH 03062
Phone: (603) 888-8974



REV	DATE	ISSUED FOR
1	9/30/14	ISSUED FOR CONSTRUCTION

PROJECT NO: 3618148348

DRAWN BY: CBM

RELEASED BY: MSD

SHEET TITLE

**ANTENNA MOUNTING
DETAIL AND COAX
LAYOUT**

SHEET NUMBER

C-4

REVISION:

0