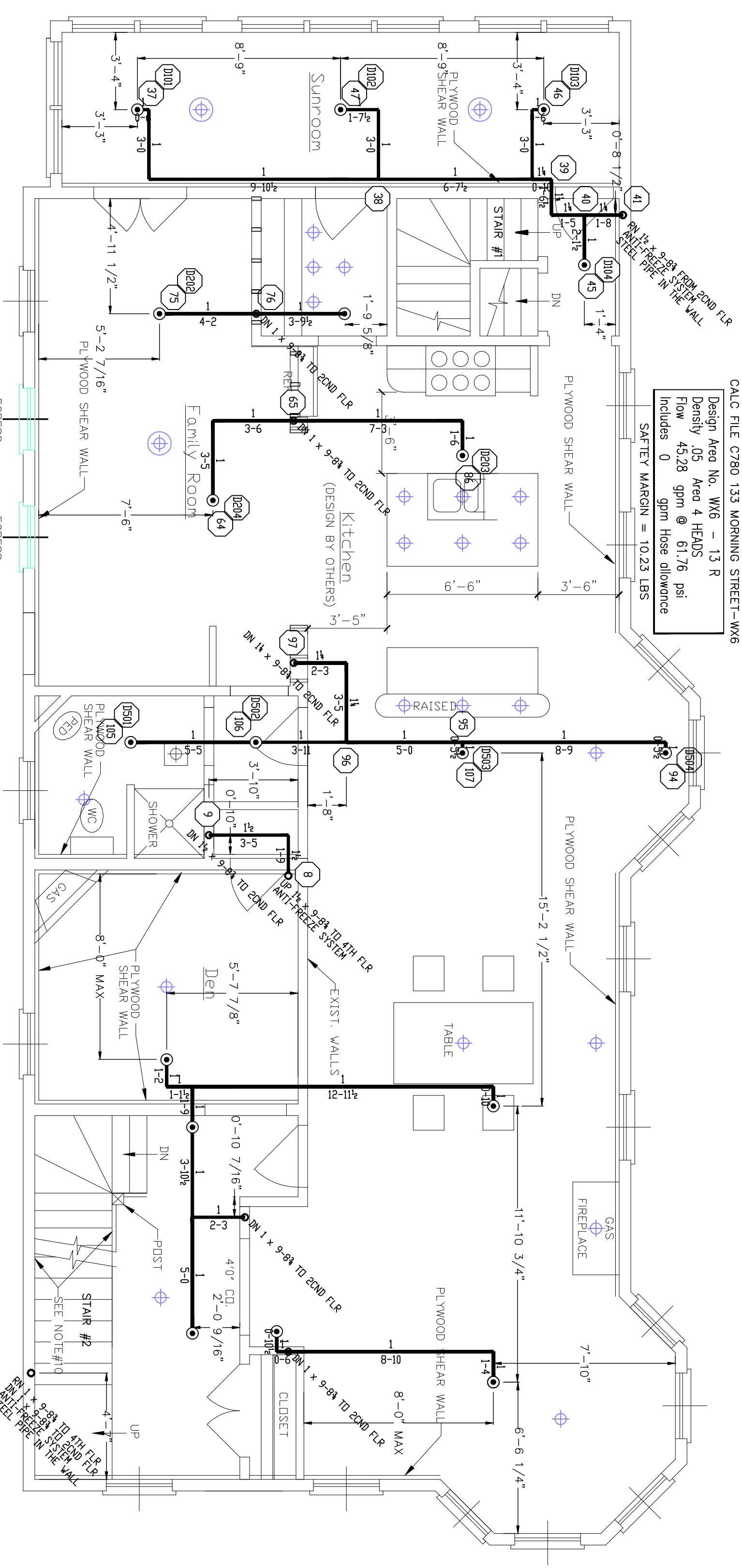
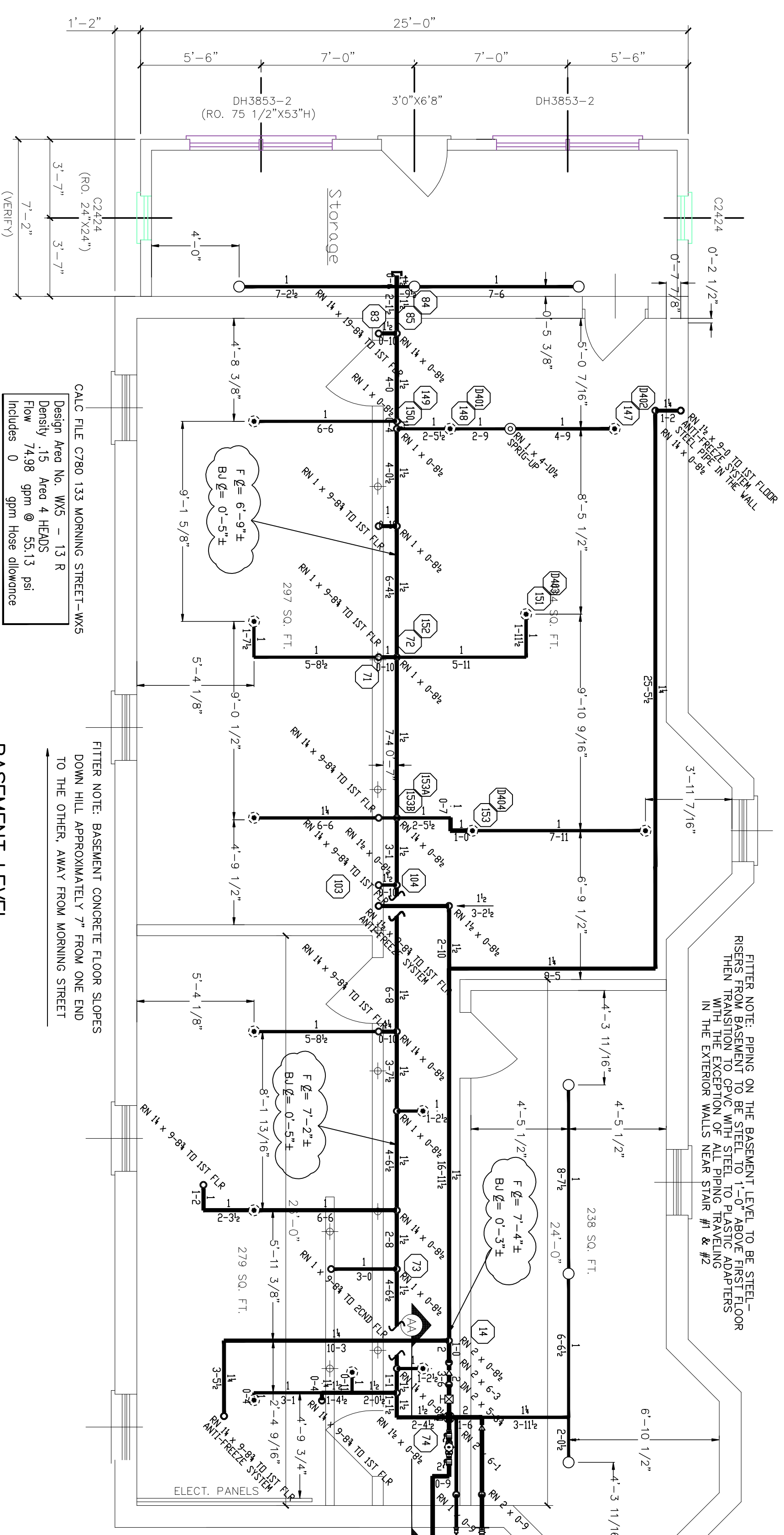


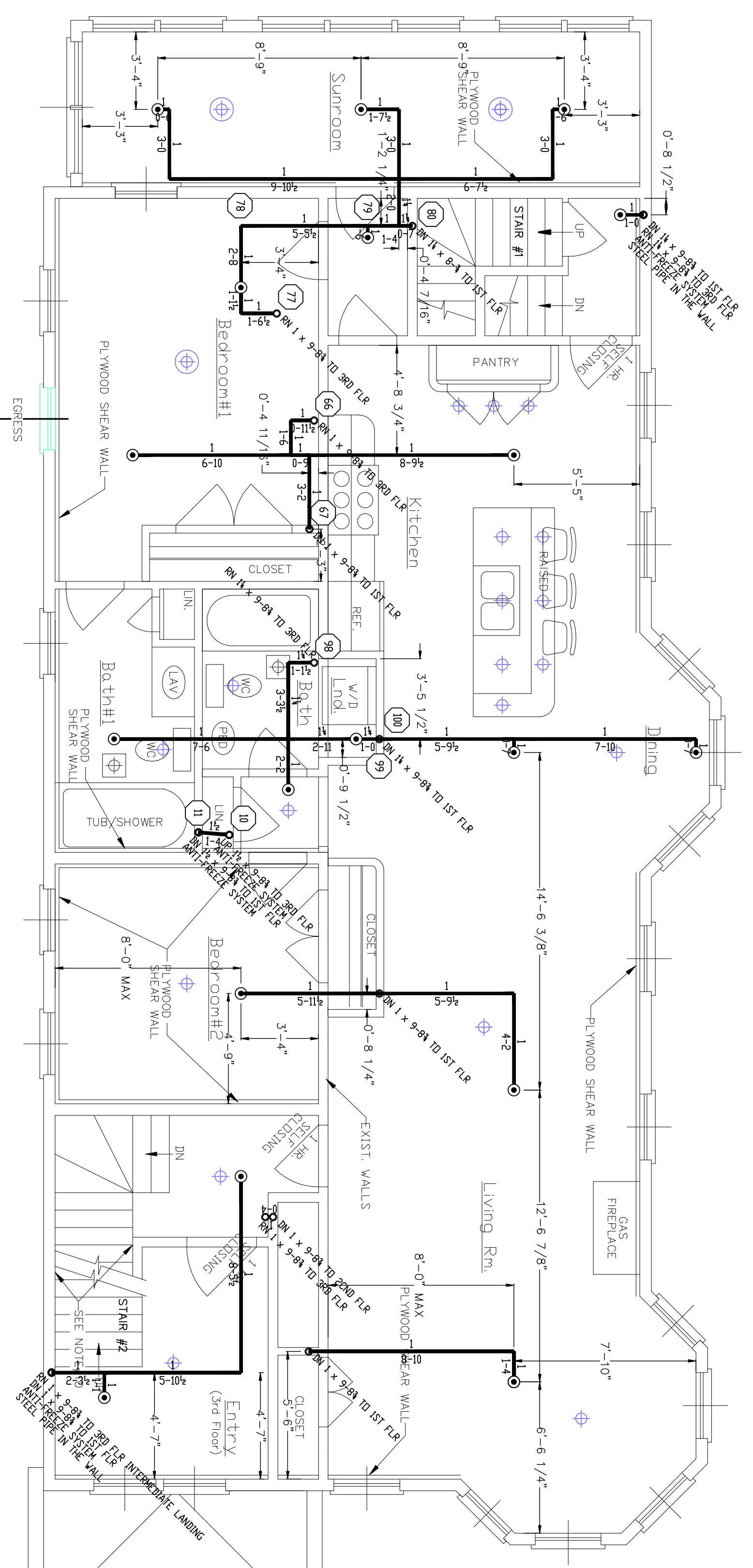
FIRST FLOOR
SPRINKLER LAYOUT
SCALE 1/4" = 1'-0"



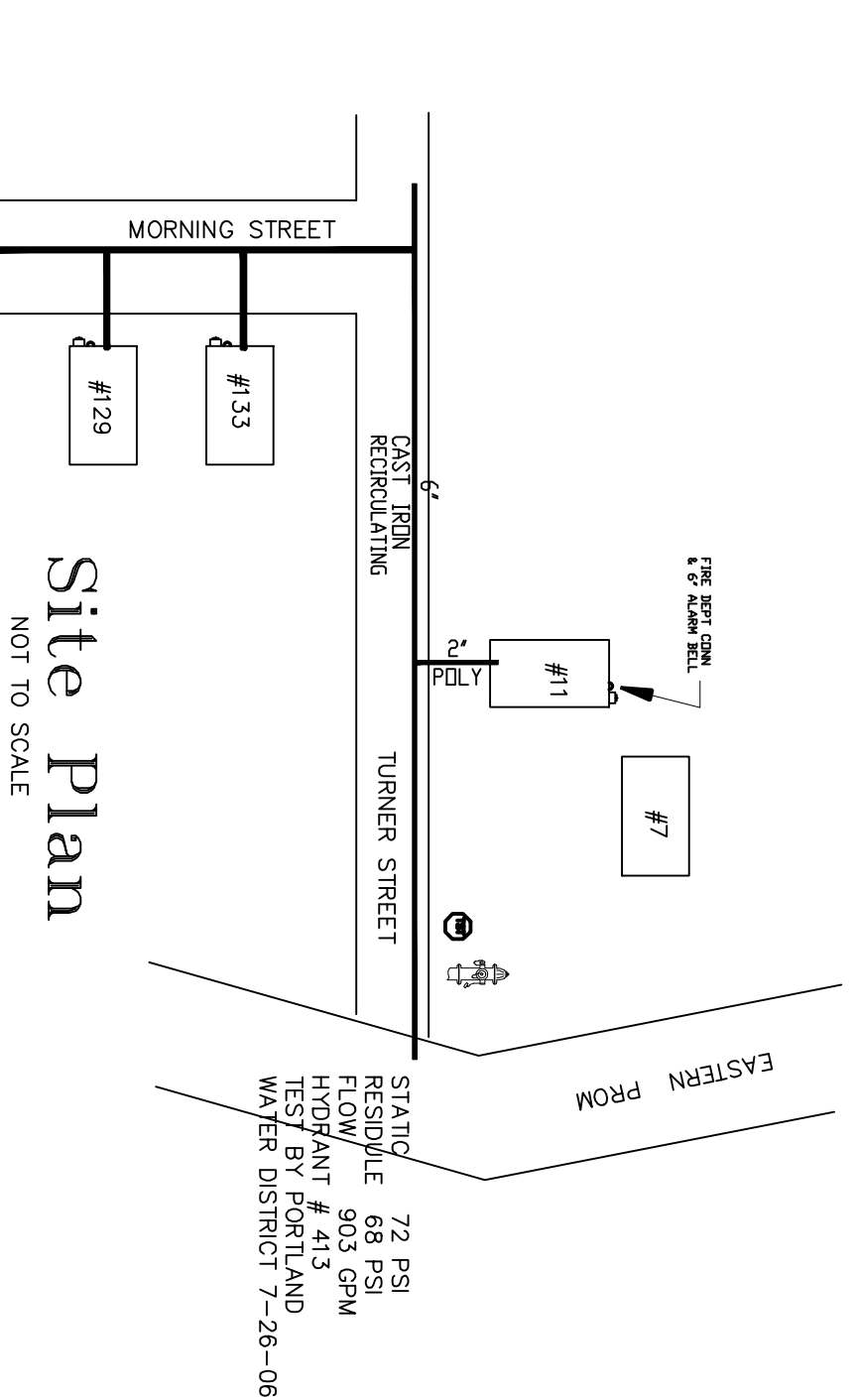
THIRD FLOOR
SPRINKLER LAYOUT
SCALE 1/4" = 1'-0"



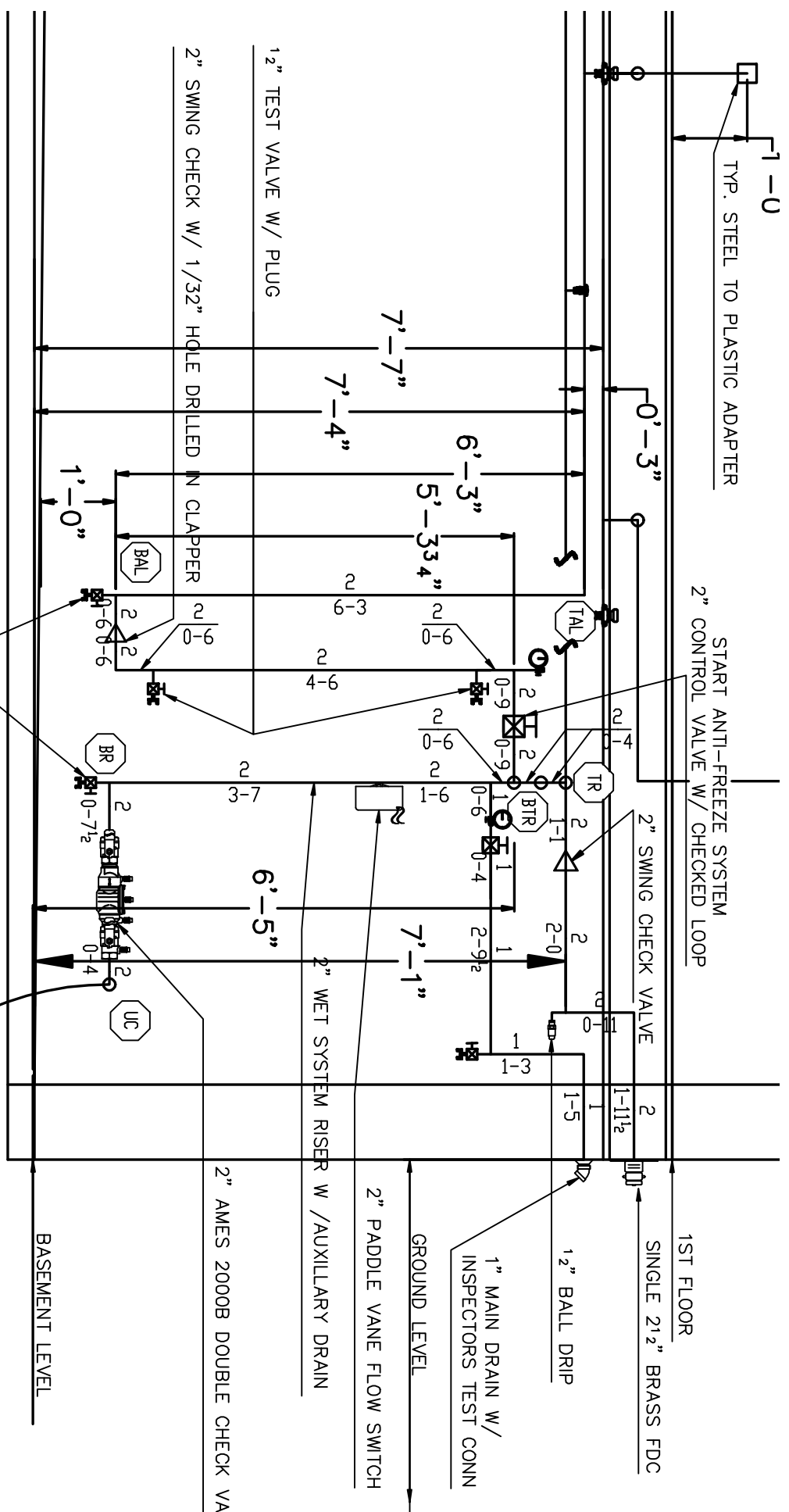
BASEMENT LEVEL
SPRINKLER LAYOUT
SCALE 1/4" = 1'-0"



SECOND FLOOR
SPRINKLER LAYOUT
SCALE 1/4" = 1'-0"



Site Plan
NOT TO SCALE



SECTION AA
RISER DETAIL
SCALE 1/2" = 1'-0"

- LEGEND:**
- UPRIGHT SPRINKLER ON A BRANCH LINE
 - RECESSED PENDENT SPRINKLER ON A 1" DROP
 - CONCEALED PENDENT (R) (COMMERCIAL) SPRINKLER ON A 1" DROP
 - CONCEALED PENDENT (R) (RESIDENTIAL) SPRINKLER ON A 1" DROP
 - RECESSED HORIZONTAL SIDEWALL SPRINKLER
 - DRY HORIZONTAL SIDEWALL SPRINKLER
 - EXTENDED COVERAGE HORIZONTAL SIDEWALL SPRINKLER
 - ▲ RISE OR DROP
 - GROOVED COUPLING
 - HYDRAULIC REFERENCE POINT
 - GELING HEIGHT
 - HANGER
 - FINISHED FLOOR TO PIPE CENTERLINE
 - BOTTOM OF JOIST TO PIPE CENTERLINE
 - BOTTOM OF BEAM TO PIPE CENTERLINE
 - CONCRETE DECK TO PIPE CENTERLINE
 - GENERAL NOTES:

GENERAL NOTES:

1. ALL THREADED PIPE IS TO BE SCH. 40 BLACK STEEL U/V.N.
2. ALL THREADED PIPE FITTINGS ARE TO BE BLACK CAST IRON, CLASS 125 U/V.N.
3. DIMENSIONS SHOWN ON THREADED PIPE ARE CENTER TO CENTER U/V.N.
4. DIMENSIONS SHOWN ON GROOVED PIPE ARE "CUT" LENGTHS U/V.N.
5. PENDENT SPRINKLERS IN ACCOUNT TITLE GELINGS ARE NOT LOCATED IN THE CENTER OF GELING TITLE MODULES.
6. SUFFICIENT HEAT TO PREVENT FREEZING OF THE WET SPRINKLER SYSTEM IS REQUIRED TO BE FURNISHED BY THE BUYER/OWNER.

SYSTEM CLASSIFICATION:

A WET PIPE SYSTEM OF AUTOMATIC SPRINKLERS TO BE INSTALLED IN HEATED AREAS AND AN ANTI-FREEZE SYSTEM TO BE INSTALLED IN UNHEATED THIRD FLOOR ATTIC, DESIGNED IN ACCORDANCE WITH NFPA-13B, STANDARD FOR THE INSTALLATION OF SPRINKLER SYSTEMS, 2007 EDITION.

SCOPE OF WORK:

SYSTEM IS HYDRAULICALLY CALCULATED TO PROVIDE A DENSITY OF 0.05 GPM WITH THE MOST REMOTE FOUR HEADS FLOWING AND A DENSITY OF 15 GPM IN THE BASEMENT / STORAGE AREAS WHILE FLOWING FOUR HEADS, IN ACCORDANCE WITH NFPA 13B, STANDARD FOR THE INSTALLATION OF SPRINKLER SYSTEMS, 2007 EDITION.

DEAN & ALLYN, INC.
FIRE PROTECTION - SPECIAL HAZARD
PO BOX 709, GRAY, MAINE 04039
(207)857-5646 FAX:(207)857-5647

APPROVED BY	DATE	APPROVED BY	DATE
DANA A. STEWART	4/9/08	DAVID J. BROWN	4/28/08
REVIEWED BY	DATE	REVIEWED BY	DATE
AT BEAN & ALLYN, INC.	4/28/08	AT BEAN & ALLYN, INC.	4/28/08

3-UNIT RENOVATION
133 MORNING STREET
PORTLAND, ME 04101

REV. 0
DATE: 7/4
BY: JTB
REASON: 9/4

C0804780