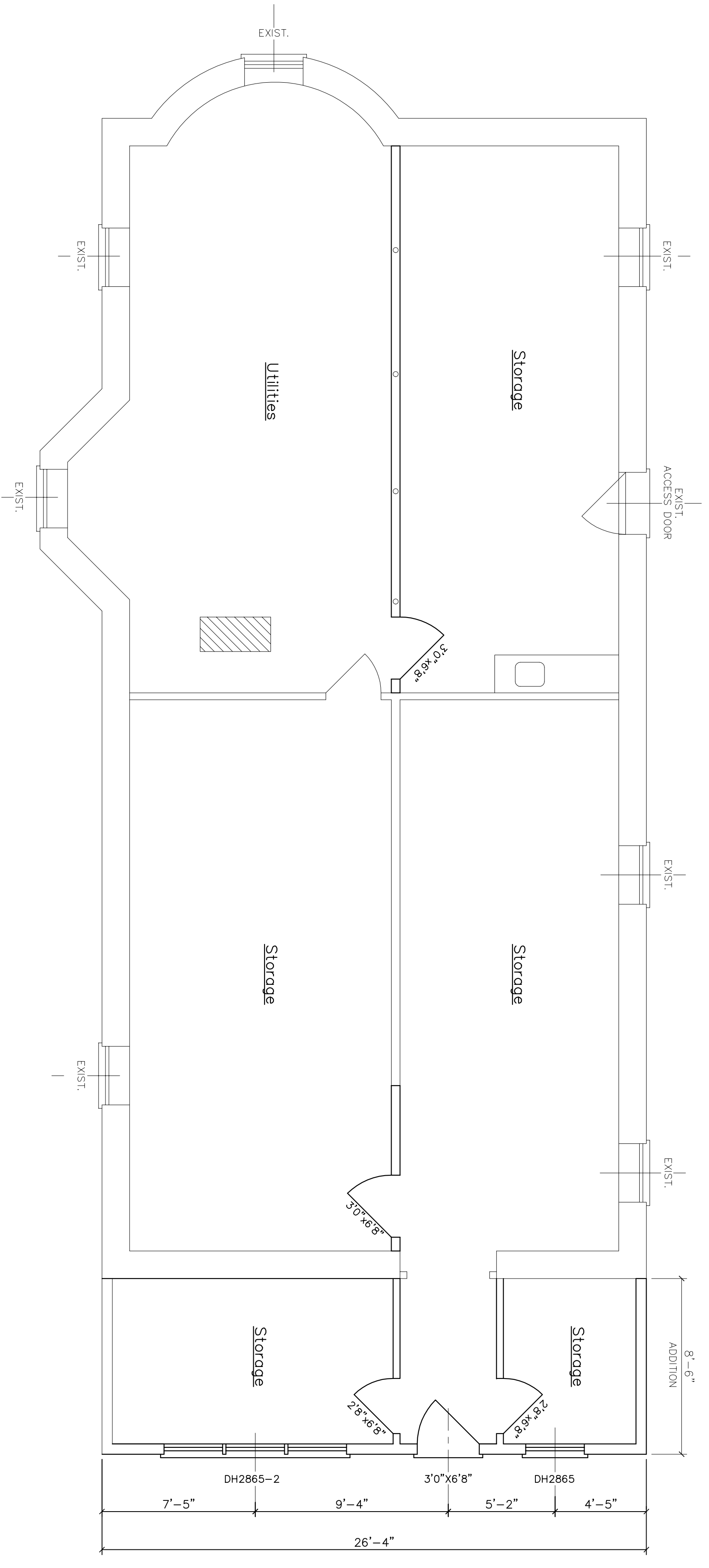


FLOOR PLAN—FIRST FLOOR UNIT 1B



FLOOR PLAN—BASEMENT FLOOR

6-Unit Renovation	
129 Morning St., Portland, Maine	
MORIN DRAFTING GORHAM, ME. 893-2462	
UNITS 1A & BASEMENT	
ALTERATIONS PLAN	
DRAWN: J. MORIN	A1
SCALE: AS NOTED	
DATE: 11-17-07	